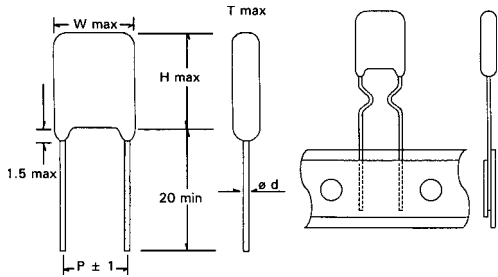


POLYESTER, POLYETHYLENE TEREPHTHALATE (PET), INDUCTIVELY WOUND, EPOXY COATED



- A) Available with cut leads 5.0m long (± 1.0mm)
- B) Available cut and formed as shown above – style 7 (see part numbering system).

SPECIFICATIONS

Performance Characteristics	
Operating Temperature Range	-40°C ~ +85°C.
Voltage Range	100VDC.
Withstanding Voltage (between leads)	2.5 times rated voltage for 2 seconds.
Capacitance Range	0.001µF ~ 0.47µF.
Capacitance Tolerance	±5%, ±10%, & ±20%.
Maximum Dissipation Factor % (20°C, 1KHz)	<1.0.
Minimum Insulation Resistance	30000MΩ (< 0.33µF). 10000MΩ (> 0.33µF).

PART NUMBERING

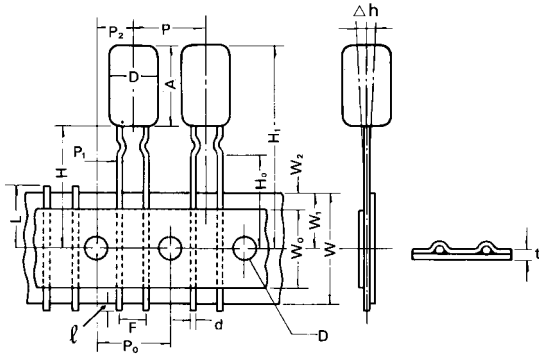
Part Number Example: 92-100/102J3F							
92	-	100	/	102	J	3	F
Type		Rated DC Voltage		Capacitance Code (pF)*	Tolerance Code	Lead Spacing	RoHs Compliant

* Capacitance Code: First two digits represent significant figures, third digit represents multiplier (number of zeros).

STANDARD PRODUCT TABLE

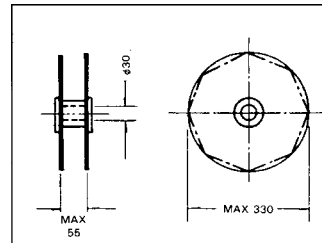
100WVDC											
Type		Standard Size (92)					Low Profile (92M)				
Capacitance		W	H	T	P	ØD	W	H	T	P	ØD
Code	(µF)										
102	0.001	5.0	10.0	2.5	3.5	0.5	5.0	7.0	2.5	3.5	0.5
122	0.0012	5.0	10.0	2.5	3.5	0.5	5.0	7.0	2.5	3.5	0.5
152	0.0015	5.0	10.0	2.5	3.5	0.5	5.5	7.2	2.5	4.0	0.5
182	0.0018	5.0	10.0	2.5	3.5	0.5	5.5	7.2	2.5	4.0	0.5
222	0.0022	5.0	10.0	2.5	3.5	0.5	5.5	7.2	3.0	4.0	0.5
272	0.0027	5.5	10.5	3.0	3.5	0.5	5.5	7.2	3.0	4.0	0.5
332	0.0033	5.5	10.5	3.0	3.5	0.5	5.5	7.2	3.0	4.0	0.5
392	0.0039	5.5	10.5	3.0	3.5	0.5	5.5	7.2	3.0	4.0	0.5
472	0.0047	5.5	10.5	3.0	4.0	0.5	6.0	7.5	3.0	4.3	0.5
562	0.0056	5.5	10.5	3.0	4.0	0.5	6.0	7.5	3.5	4.3	0.5
682	0.0068	5.5	10.5	3.0	4.0	0.5	6.0	7.5	3.5	4.3	0.5
822	0.0082	6.0	10.5	3.5	4.0	0.5	6.0	7.5	3.5	4.3	0.5
103	0.01	6.0	10.5	3.5	4.0	0.5	5.5	8.0	3.0	4.0	0.5
123	0.012	6.5	11.0	3.0	4.5	0.5	5.5	8.0	3.0	4.0	0.5
153	0.015	6.5	11.0	3.0	4.5	0.5	6.0	8.0	3.0	4.0	0.5
183	0.018	6.5	11.0	3.0	4.5	0.5	6.0	8.5	3.0	4.3	0.5
223	0.022	7.0	11.5	3.5	5.3	0.5	6.5	8.5	3.0	5.0	0.5
273	0.027	7.0	11.5	3.5	5.36	0.5	6.5	8.5	3.0	5.0	0.5
333	0.033	7.5	12.0	3.5	5.5	0.5	7.0	9.0	3.5	5.3	0.5
393	0.039	7.5	12.0	4.0	5.5	0.5	7.5	9.5	3.5	5.5	0.5
473	0.047	8.0	12.0	4.0	5.7	0.5	7.5	9.5	3.5	5.5	0.5
563	0.056	9.0	12.0	4.0	6.5	0.5	7.5	9.5	3.5	5.5	0.5
683	0.068	9.0	12.0	4.0	6.5	0.5	8.0	10.0	4.0	5.7	0.5
823	0.082	9.5	12.0	5.0	7.5	0.5	9.0	10.0	5.0	6.3	0.5
104	0.10	10.0	12.5	5.5	7.5	0.5	9.0	10.5	5.0	6.5	0.5
124	0.12	11.0	13.0	6.0	9.5	0.5	9.5	10.5	5.5	6.5	0.5
154	0.15	12.0	15.0	6.0	9.5	0.5	10.0	12.5	5.5	6.5	0.5
184	0.18	12	15.0	6.0	9.5	0.5	10.0	12.5	5.5	6.5	0.5
224	0.22	13.5	15.0	7.0	9.5	0.6	11.0	12.5	6.5	7.3	0.5
274	0.27	13.5	15.0	7.0	9.5	0.6	11.0	12.5	6.5	7.3	0.5
334	0.33	14.0	17.5	7.0	10.0	0.6	12.5	14.5	7.5	8.5	0.6
394	0.39	14.5	17.5	7.5	10.0	0.6	12.5	14.5	7.5	8.5	0.6
474	0.47	16.0	19.5	10.0	10.0	0.6	14.0	14.5	8.5	9.0	0.6

TAPING



(Unit: mm)

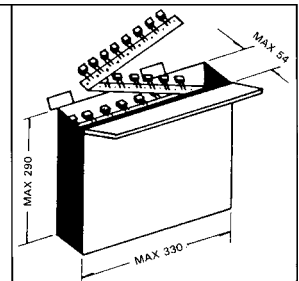
REEL



Reel : 330 x 330 x 50 (Max.)
Carton: 340 x 340 x 55 (Max.)

Cap (μF)	PCS
0.001~0.018	2.000
0.02 ~0.039	1.500
0.047~0.22	1.000

AMMO PACK



Ammo: 290 x 330 x 5.4 (Max.)

Cap (μF)	PCS
0.001~0.018	2.000
0.02 ~0.039	1.500
0.047~0.22	1.000

Symbol	Value	Tolerance	Remarks	Symbol	Value	Tolerance
b	0.5	± 0.05	0.6 ± 0.06	H	20.0	± 0.75
p	12.7	± 0.01		H ₀	16.0	± 0.5
P ₀	12.7	± 0.3			1.0	Maximum
P ₁	3.85	± 0.5		D ₀	4.0	± 0.3
P ₂	6.35	± 1.5		t	0.7	± 0.2
F	5.0	+ 0.8,-0.2		L	11.0	Maximum
Δh	0	± 1.0				
W	18.0	+ 1.0,-0.5	12.5			
W ₀	12.5	Minimum				
W ₁	9.0	± 0.5				
W ₂	3.0	Maximum				