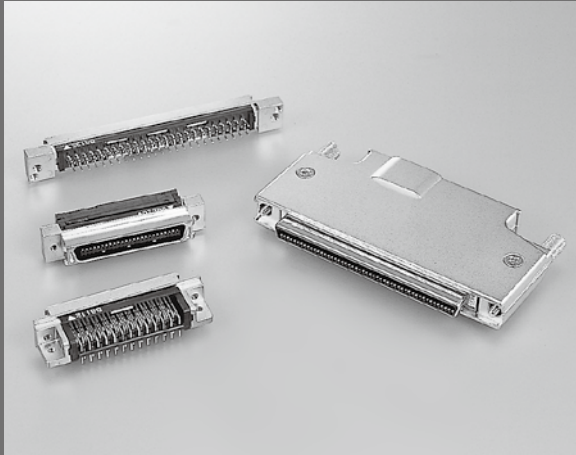


# 8840 / 8850 / 8855 SERIES

## 1.27mm PITCH I/O CONNECTOR

**RoHS**  
Compliant



### FEATURES

- ▶ One-touch latch (20-80pin) for ease of use. (100 pin :Lock screw)
- ▶ With a completely-independent two-point contact system, a stable contact pressure is maintained at all times.
- ▶ Diecast cover controls EMI.
- ▶ D-shape housing prevents mis-insertion.
- ▶ Insulator prevents deformation of contact.
- ▶ Flat cable version of 8855 Series is available.

### ORDER CODE

**8840**-**-174****D-F**

①      ②      ③      ④ ⑤ ⑥

\*Please order in multiples of the quantity per package.

- ① **[Type] 8840** : Receptacle (Cable side connector)
- ② **[Number of contacts]** 020 : 20pin 028 : 28pin 034 : 34pin 050 : 50pin 060 : 60pin 068 : 68pin 080 : 80pin 100 : 100pin
- ③ **[Contact name]** 174
- ④ **[Recommended cable]** A : #28 AWG (7/0.127) Discrete wire cable B : #28 AWG (7/0.127) Laminated wire cable  
C : #30 AWG (7/0.10) Discrete wire cable\* D : #30 AWG (7/0.10) Laminated wire cable\*
- ⑤ **[Plating of contact area]** D : 0.25μm min.
- ⑥ **[RoHS]** F : RoHS compliant

If you would like a C or D type connector, please contact your local KEL sales office.

### ORDER CODE

**8850**-**-170****D-F**

①      ②      ③      ④ ⑤ ⑥

\*Please order in multiples of the quantity per package.

- ① **[Type] 8850** : Plug (PCB side connector)
- ② **[Number of contacts]** 020 : 20pin 028 : 28pin 034 : 34pin 050 : 50pin 060 : 60pin 068 : 68pin 080 : 80pin 100 : 100pin
- ③ **[Contact name]** 170
- ④ **[Contact tail style]** S : Straight L : Right angle
- ⑤ **[Plating of contact area]** D : 0.25μm min.
- ⑥ **[RoHS]** F : RoHS compliant

### ORDER CODE

**8855**-**-174****D-F**

①      ②      ③      ④ ⑤ ⑥

\*Please order in multiples of the quantity per package.

- ① **[Type] 8855** : Plug (Cable plug)
- ② **[Number of contacts]** 020 : 20pin 028 : 28pin 034 : 34pin 050 : 50pin 060 : 60pin 068 : 68pin 080 : 80pin 100 : 100pin
- ③ **[Contact name]** 174
- ④ **[Recommended cable]** A : #28 AWG (7/0.127) Discrete wire cable B : #28 AWG (7/0.127) Laminated wire cable  
C : #30 AWG (7/0.10) Discrete wire cable\* D : #30 AWG (7/0.10) Laminated wire cable\* F : #28 AWG (7/0.127) Flat ribbon cable
- ⑤ **[Contact tail style]** D : 0.25μm min.
- ⑥ **[RoHS]** F : RoHS compliant

If you would like a C or D type connector, please contact your local KEL sales office.

## SPECIFICATIONS

Material and plating		Electrical Characteristics	
Insulator material	Glass-filled Nylon 66 (UL94V-0), Black	Current rating	0.5A per contact
Contact material	Copper alloy	Contact resistance	30mΩ max.
Contact plating	[8840/8855]Gold over Nickel	Dielectric withstanding voltage	650V AC for 1 minute
	[8850](Contact area) Gold over Nickel (Terminal area) Tin copper over Nickel	Insulation resistance	1,000MΩ min. at 500V DC
		Operating temperature	-55°C to +85°C
Metal shell material	Steel	Recommended cable	#28 AWG(7/0.127) Outer diameter of insulation : 0.58mm
Metal shell plating	Nickel over Copper		
Diecast shell material	[8850/8855]Zinc alloy		

### Diecast cover for 8840

#### ORDER CODE

**8840S** - - **CVR**

①

②

③

\*Please order in multiples of the quantity per package.

- ① **[Diecast cover type] 8840S** : Cover for straight cable exit
- ② **[Number of contacts] 020** : 20pin **028** : 28pin **034** : 34pin  
**050** : 50pin **060** : 60pin **068** : 68pin **080** : 80pin **100** : 100pin
- ③ **[Mounted panel thickness] (Only 100 pin)**  
**1** : No panel **2** : 0.8~1.0mm **3** : 1.6mm  
No to be specified as the 20 to 80 pin types due to a spring lock system

\*Connectors and diecast cover are required when you use a 20 to 80 pin type 8840 Series connector.

#### SPECIFICATIONS

Material and plating	
Diecast cover	[20-80 pin] Zinc alloy [100 pin] Aluminum
Diecastcover plating	Nickel over Copper
Spring lock material	Stainless steel
Lock screw material	Steel Copper plating
Lock screw plating	Nickel over Copper
Cable clamp material	Stainless steel

### Lock Nut(100pin connector only)

#### ORDER CODE

**8850-SR** -

①

②

\*Lock nuts are sold in pairs. \*Please order in multiples of the quantity per package.

- ① **[Lock nut] 8850-SR** : Lock nut for 8850
- ② **[Panel thickness] 01** : No panel **02** : 1.0mm **03** : 1.6mm **05** : 0.8mm

\*Connectors and lock nuts are required when you use a 100 pin type 8850/8855 Series connector.

\*The connector may be adjusted to a panel thickness not listed above. If you consider using one for such a panel, please feel free to contact us.

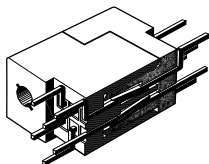
#### SPECIFICATIONS

Material and plating	
Lock nut material	Steel
Lock nut plating	Nickel over Copper

### Contact Concept (Contacts with 2 mating points straight-beam construction)

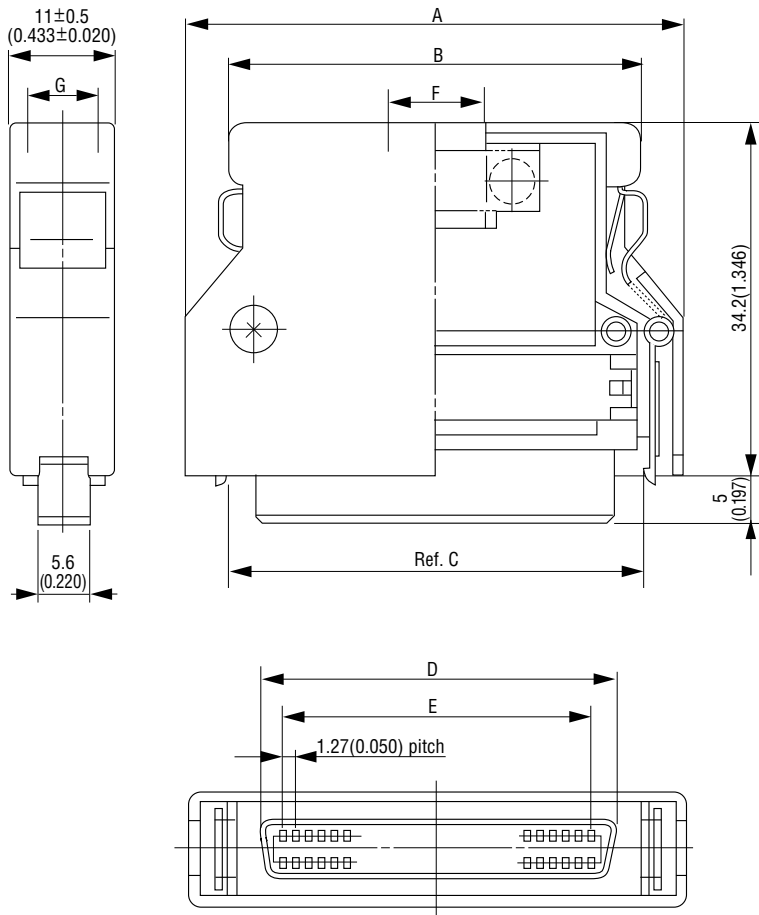
#### ◆ Outline

KEL has developed a unique straight beam contact with two independent mating points for male and female half pitch connectors which offers low insertion and withdrawal forces with high reliability. In response to the rapidly changing requirements for connectors, from cardedge to standard pitch two piece to half pitch two piece, KEL offers these connectors for today's requirement for high density and reliability.



#### ◆ Key Features

- With a completely-independent two-point contact system, a stable contact pressure is maintained at all times.
- Contact surface is smooth and tapered to reduce insertion and withdrawal forces and increase connector life.
- Lower cost because same contact is used for both male and female connectors.
- Mating process of contacts is self-cleaning with a long wiping area.
- Insulator aligns the mating connectors, prevents mis-insertion and protects the contacts from bending and breakage.



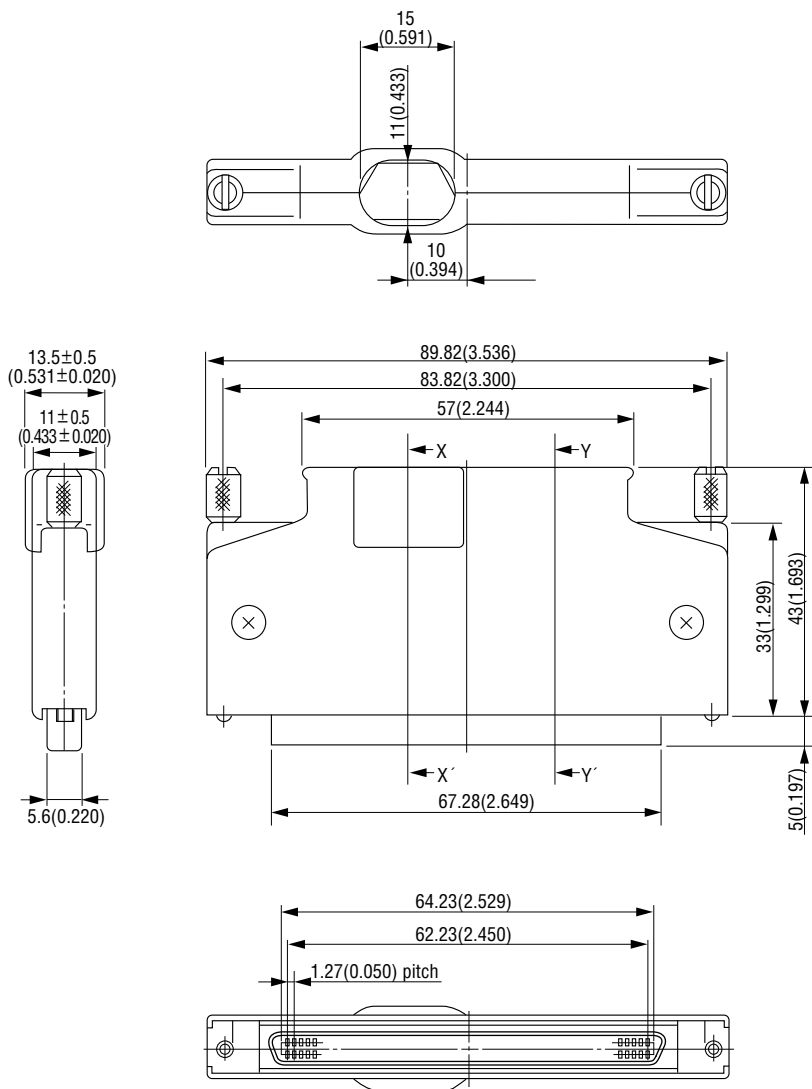
In the product drawing, the connector body (receptacle) is combined with a diecast cover.  
 When placing your order, please note that the connector (8840-□□-174□D-F) and the diecast cover (8840S-□□□-CVR) must be ordered separately.

Packaging style

Other

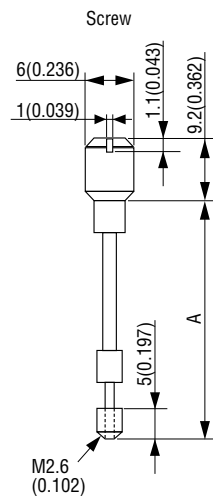
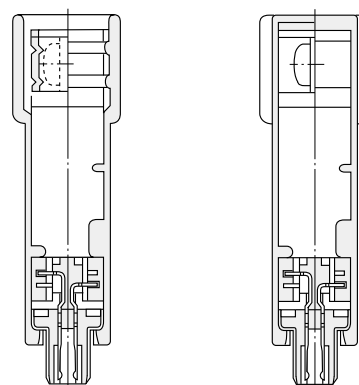
**▶ Product Table / Dimensions**

No. of contacts	Part Number	A	B	C	D	E	F	G	Number of packaging
20	8840-020-174□D-F	30.00	22.30	21.3	16.48	11.43	6.7	6.7	80
	8840S-020-CVR	(1.181)	(0.878)	(0.839)	(0.649)	(0.450)	(0.264)	(0.264)	
28	8840-028-174□D-F	35.08	27.38	26.4	21.56	16.51	7.5	7.5	80
	8840S-028-CVR	(1.381)	(1.078)	(1.039)	(0.849)	(0.650)	(0.295)	(0.295)	
34	8840-034-174□D-F	38.89	31.19	30.2	25.37	20.32	8.7	8.7	80
	8840S-034-CVR	(1.531)	(1.228)	(1.189)	(0.999)	(0.800)	(0.343)	(0.343)	
50	8840-050-174□D-F	49.05	41.35	40.4	35.53	30.48	10.0	8.5	50
	8840S-050-CVR	(1.931)	(1.628)	(1.591)	(1.399)	(1.200)	(0.394)	(0.335)	
60	8840-060-174□D-F	55.40	47.70	46.7	41.88	36.83	11.0	8.5	50
	8840S-060-CVR	(2.181)	(1.878)	(1.839)	(1.649)	(1.450)	(0.433)	(0.335)	
68	8840-068-174□D-F	60.48	52.78	51.8	46.96	41.91	12.0	8.5	50
	8840S-068-CVR	(2.381)	(2.078)	(2.039)	(1.849)	(1.650)	(0.472)	(0.335)	
80	8840-080-174□D-F	68.10	60.40	59.4	54.58	49.53	13.0	8.5	50
	8840S-080-CVR	(2.681)	(2.378)	(2.339)	(2.149)	(1.950)	(0.512)	(0.335)	



**X-X' Cross Section**

**Y-Y' Cross Section**



In the product drawing, the connector body (receptacle) is combined with a diecast cover.  
When placing your order, please note that the connector (8840-□□-174□D-F) and the diecast cover (8840S-□□□-CVR) must be ordered separately.

Packaging style

Other

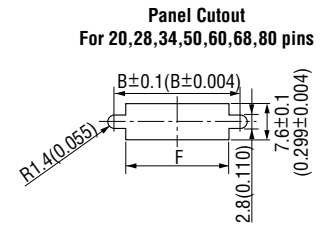
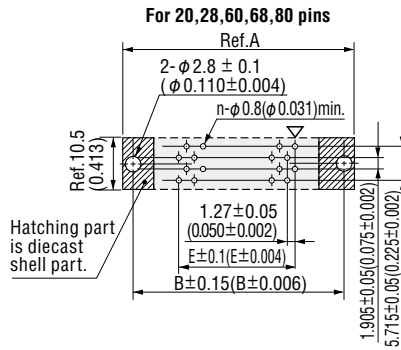
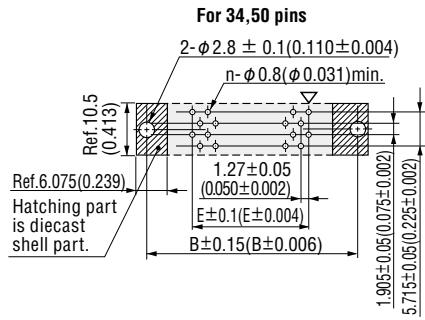
► **Product Table / Dimensions**

Part Number	Mounted Panel Thickness	A	Number of packaging
8840-100-174□D-F 8840S-100-1-CVR	No Panel	33.8 (1.331)	50
8840-100-174□D-F 8840S-100-2-CVR	0.8~1.0mm	33.3 (1.311)	50
8840-100-174□D-F 8840S-100-3-CVR	1.6mm	32.8 (1.291)	50

# 8850-□□□-170SD-F (Plug, PCB side connector, Straight, 20-80 pin)

Unit : mm(inch)

## Printed Circuit Board Layout (Component Side View)



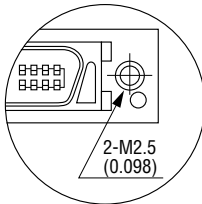
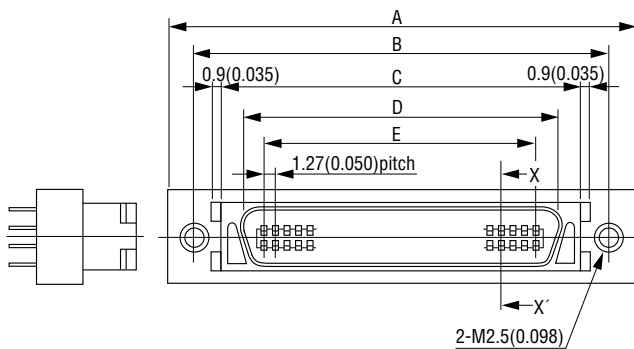
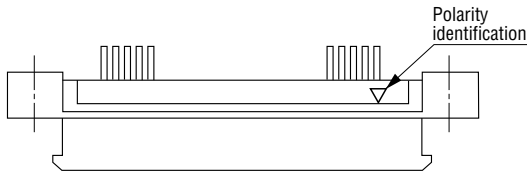
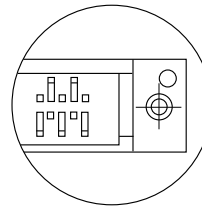
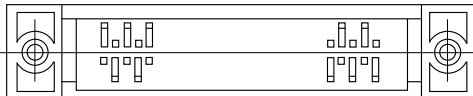
Recommended panel Thickness  
 $t \geq 0.079$  max.

Recommended PCB Thickness  $t1.6 \pm 0.19$  (0.063 $\pm 0.007$ )

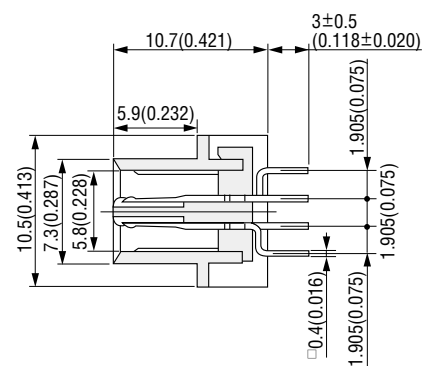
▽=Polarity identification "n" is number of contacts.

For 20, 50 pins

For 28, 34, 60, 68, 80 pins



X-X' Cross Section

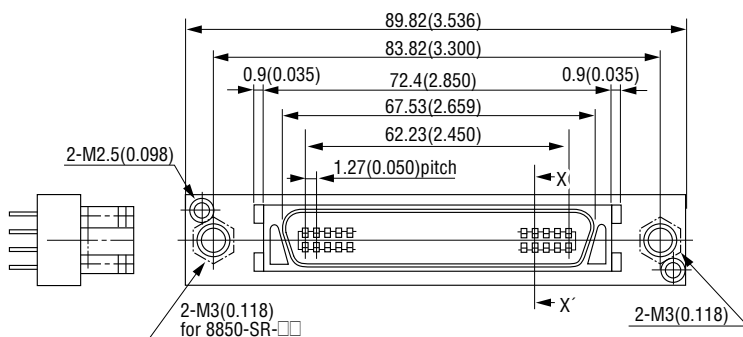
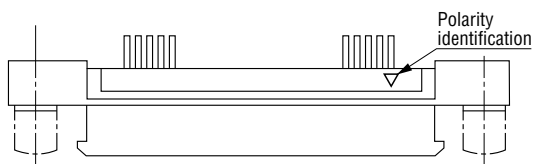
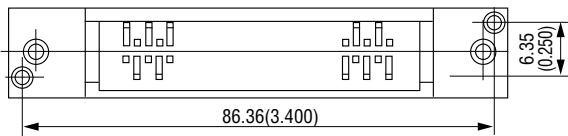


Packaging style

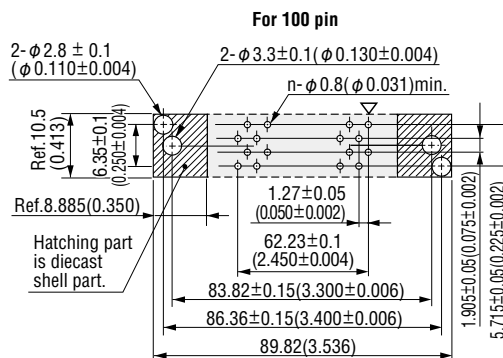
Pipe

## Product Table / Dimensions

No. of contacts	Part Number	A	B	C	D	E	F	Number of packaging
20	8850-020-170SD-F	33.40 (1.315)	27.40 (1.079)	21.60 (0.850)	16.73 (0.659)	11.43 (0.450)	24.40 (0.961)	15
28	8850-028-170SD-F	38.48 (1.515)	32.48 (1.279)	26.68 (1.050)	21.81 (0.859)	16.51 (0.650)	29.48 (1.161)	13
34	8850-034-170SD-F	42.29 (1.665)	36.29 (1.429)	30.49 (1.200)	25.62 (1.009)	20.32 (0.800)	33.29 (1.311)	11
50	8850-050-170SD-F	52.45 (2.065)	46.45 (1.829)	40.65 (1.600)	35.78 (1.409)	30.48 (1.200)	43.45 (1.711)	9
60	8850-060-170SD-F	58.80 (2.315)	52.80 (2.079)	47.00 (1.850)	42.13 (1.659)	36.83 (1.450)	49.80 (1.961)	8
68	8850-068-170SD-F	63.88 (2.515)	57.88 (2.279)	52.08 (2.050)	47.21 (1.859)	41.91 (1.650)	54.88 (2.161)	7
80	8850-080-170SD-F	71.50 (2.815)	65.50 (2.579)	59.70 (2.350)	54.83 (2.159)	49.53 (1.950)	62.50 (2.461)	7



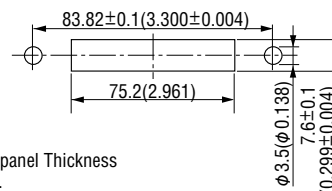
### Printed Circuit Board Layout (Component Side View)



Recommended PCB Thickness  $t1.6 \pm 0.19 (0.063 \pm 0.007)$

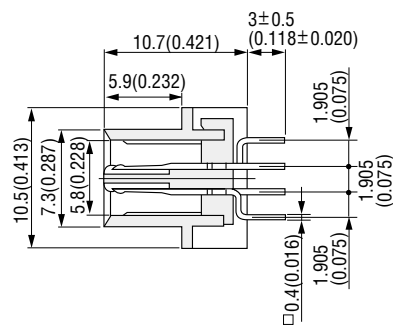
▽ = Polarity identification "n" is number of contacts.

### Panel Cutout For 100 pin



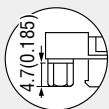
Recommended panel Thickness  $t2.0 (0.079)$  max.

### X-X' Cross Section

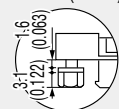


### Nut For Lock Screw

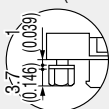
**8850-SR-01**  
(Without mounting panel)



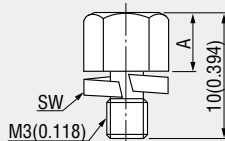
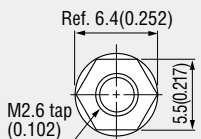
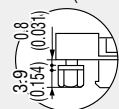
**8850-SR-03**  
mounting panel  
t1.6mm(0.063)



**8850-SR-02**  
mounting panel  
t1.0mm(0.039)



**8850-SR-05**  
mounting panel  
t0.8mm(0.031)



A	Part Number
4.7(0.185)	01(t 0)
3.7(0.146)	02(t1.0)
3.1(0.122)	03(t1.6)
3.9(0.154)	05(t1.8)

Packaging style

Pipe

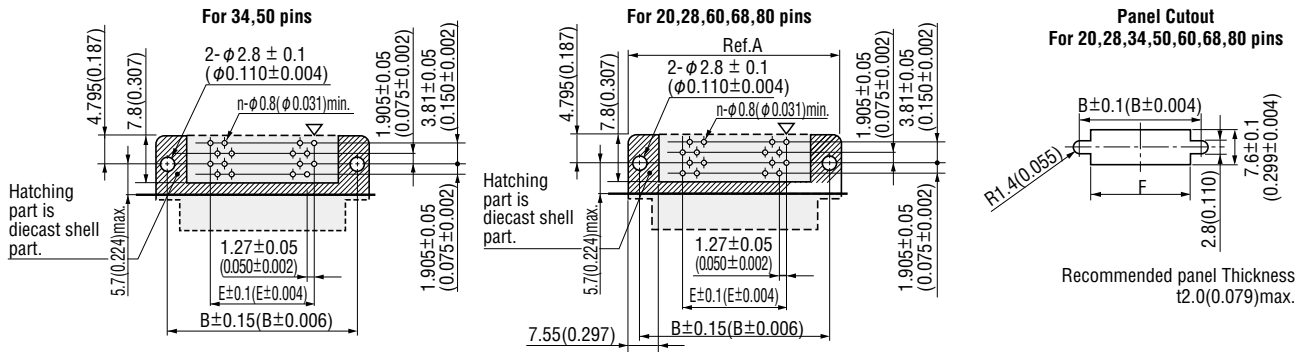
### Product Table

No. of contacts	Part Number	Number of packaging
100	8850-100-170SD-F	5

# 8850-□□□-170LD-F (Plug, PCB side connector, Right angle, 20-80 pin)

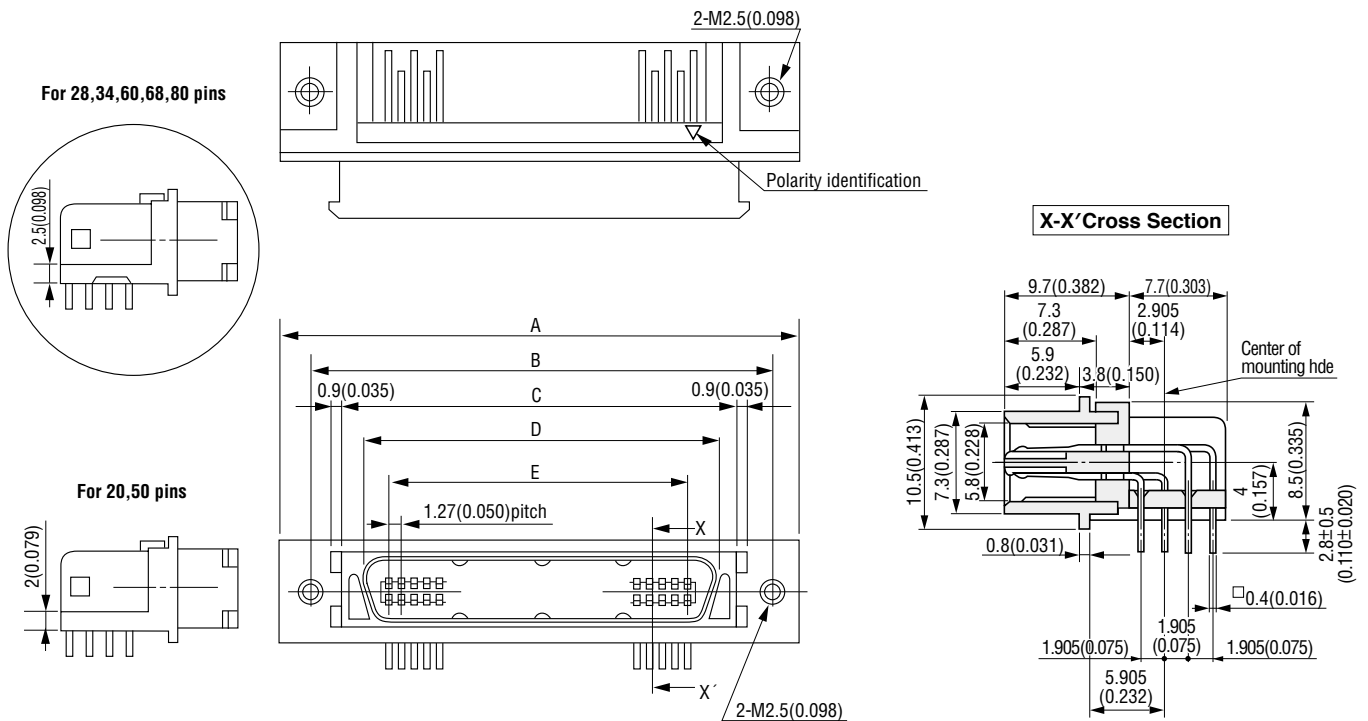
Unit : mm (inch)

## ▶ Printed Circuit Board Layout (Component Side View)



Recommended PCB Thickness  $t1.6 \pm 0.19$  (0.063 $\pm 0.007$ )

▽=Polarity identification "n" is number of contacts.

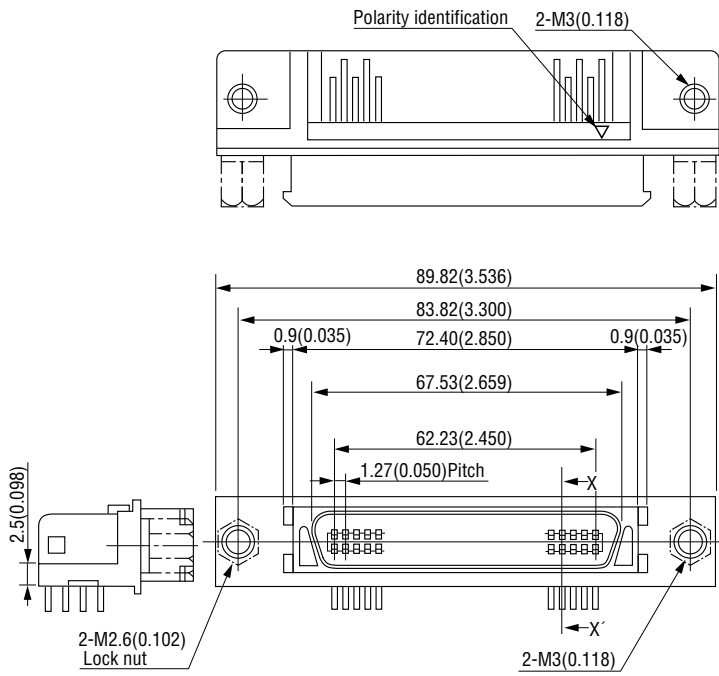


Packaging style

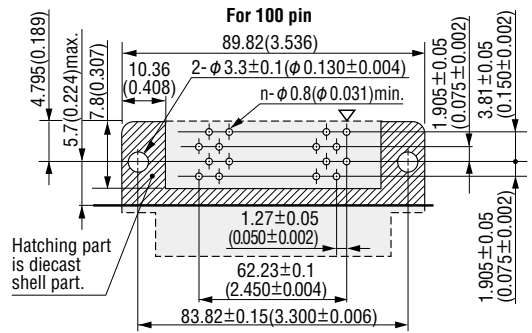
Pipe

## ▶ Product Table / Dimensions

No. of contacts	Part Number	A	B	C	D	E	F	Number of packaging
20	8850-020-170LD-F	33.40 (1.315)	27.40 (1.079)	21.60 (0.850)	16.73 (0.659)	11.43 (0.450)	24.40 (0.961)	14
28	8850-028-170LD-F	38.48 (1.515)	32.48 (1.279)	26.68 (1.050)	21.81 (0.859)	16.51 (0.650)	29.48 (1.161)	13
34	8850-034-170LD-F	42.29 (1.665)	36.29 (1.429)	30.49 (1.200)	25.62 (1.009)	20.32 (0.800)	33.29 (1.311)	11
50	8850-050-170LD-F	52.45 (2.065)	46.45 (1.829)	40.65 (1.600)	35.78 (1.409)	30.48 (1.200)	43.45 (1.711)	9
60	8850-060-170LD-F	58.80 (2.315)	52.80 (2.079)	47.00 (1.850)	42.13 (1.659)	36.83 (1.450)	49.80 (1.961)	8
68	8850-068-170LD-F	63.88 (2.515)	57.88 (2.279)	52.08 (2.050)	47.21 (1.859)	41.91 (1.650)	54.88 (2.161)	7
80	8850-080-170LD-F	71.50 (2.815)	65.50 (2.579)	59.70 (2.350)	54.83 (2.159)	49.53 (1.950)	62.50 (2.461)	7



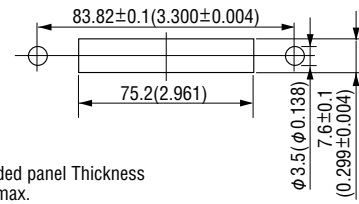
### ► Printed Circuit Board Layout (Component Side View)



Recommended PCB Thickness  $t1.6\pm 0.19(0.063\pm 0.007)$

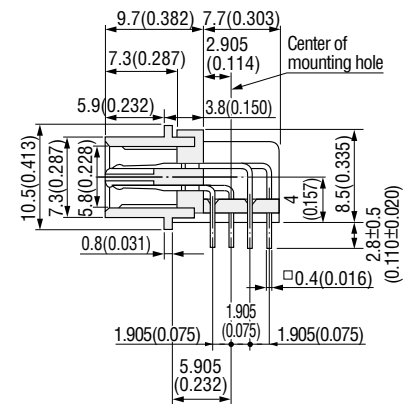
▽=Polarity identification "n" is number of contacts.

### Panel Cutout For 100 pin



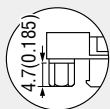
Recommended panel Thickness  $t1.6(0.063)\text{max.}$

### X-X' Cross Section

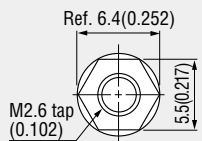
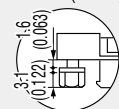


### Nut For Lock Screw

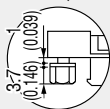
**8850-SR-01**  
(Without mounting panel)



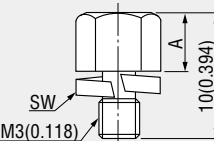
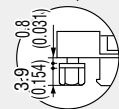
**8850-SR-03**  
mounting panel  
t1.6mm(0.063)



**8850-SR-02**  
mounting panel  
t1.0mm(0.039)



**8850-SR-05**  
mounting panel  
t0.8mm(0.031)



A	Part Number
4.7(0.185)	01(t 0)
3.7(0.146)	02(t 1.0)
3.1(0.122)	03(t 1.6)
3.9(0.154)	05(t 0.8)

### Packaging style

Pipe

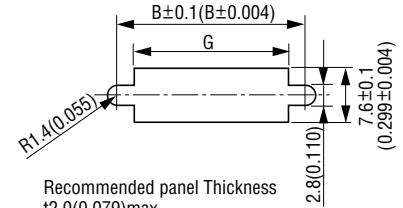
### ► Product Table

No. of contacts	Part Number	Number of packaging
100	8850-100-170LD-F	5

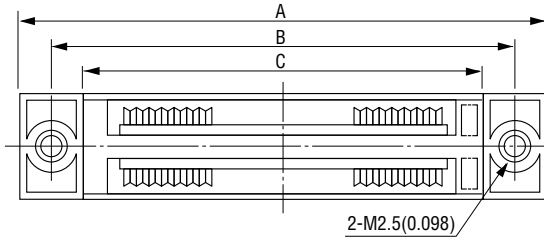


**► Panel Cutout**

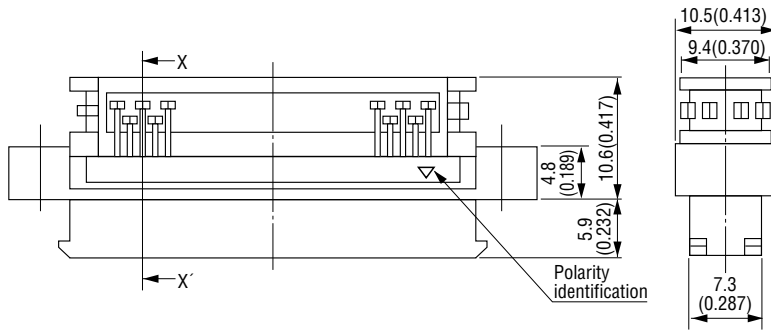
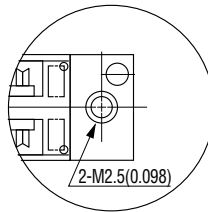
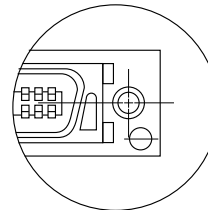
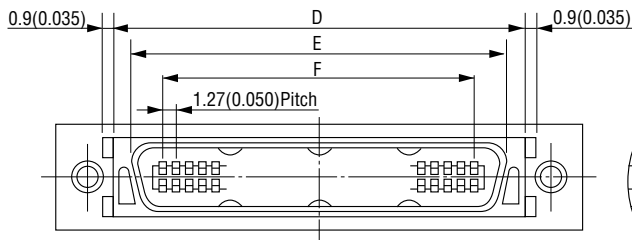
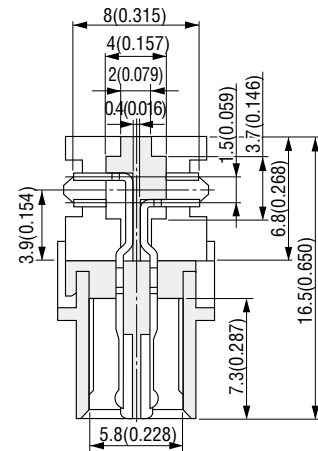
For 20,28,34,50,60,68,80 pins



For 20,50 pins



For 28,34,60,68,80 pins


**X-X' Cross Section**


Packaging style

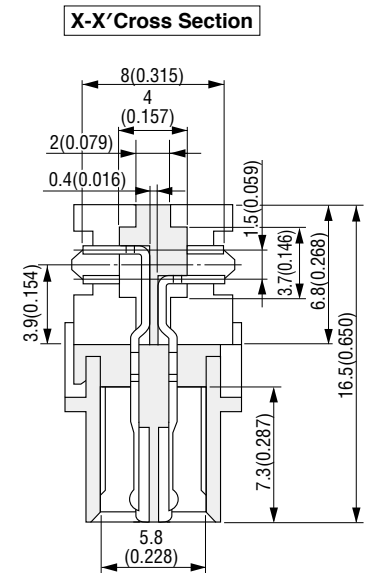
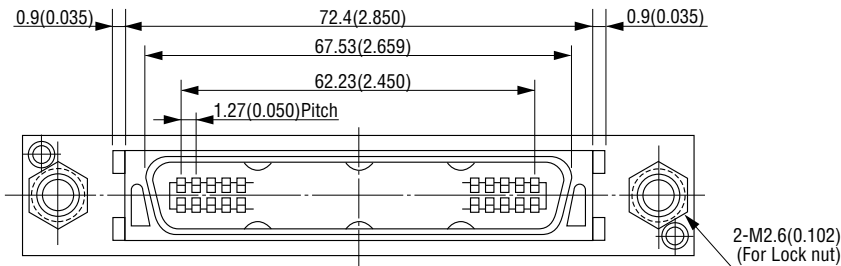
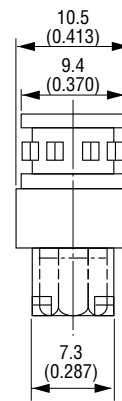
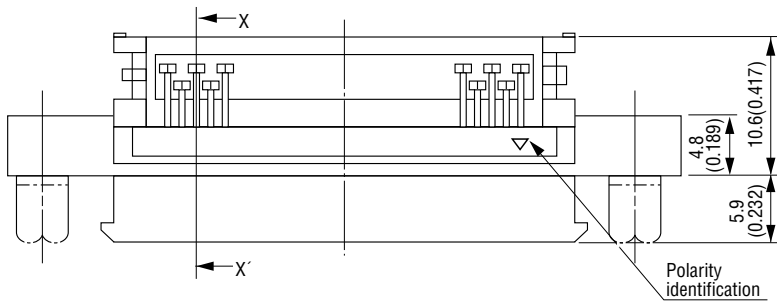
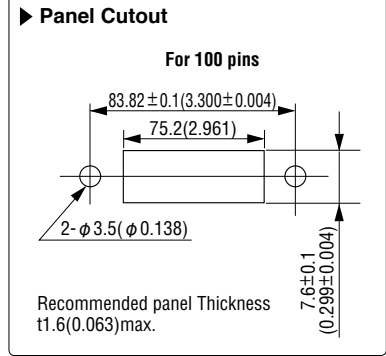
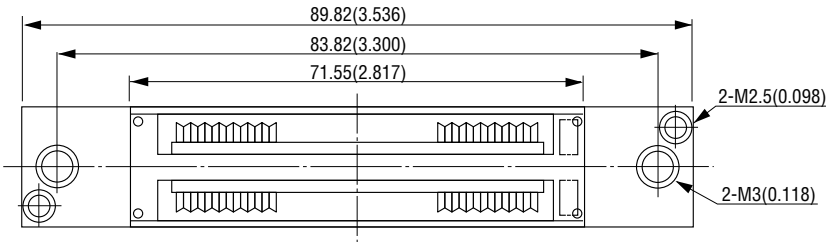
Pipe

**► Product Table / Dimensions**

No. of contacts	Part Number	A	B	C	D	E	F	G	Number of packaging
20	8855-020-174□D-F	33.40 (1.315)	27.40 (1.079)	20.75 (0.817)	21.60 (0.850)	16.73 (0.659)	11.43 (0.450)	24.40 (0.961)	14
28	8855-028-174□D-F	38.48 (1.515)	32.48 (1.279)	25.83 (1.017)	26.68 (1.050)	21.81 (0.859)	16.51 (0.650)	29.48 (1.161)	13
34	8855-034-174□D-F	42.29 (1.665)	36.29 (1.429)	29.64 (1.167)	30.49 (1.200)	25.62 (1.009)	20.32 (0.800)	33.29 (1.311)	11
50	8855-050-174□D-F	52.45 (2.065)	46.45 (1.829)	39.80 (1.567)	40.65 (1.600)	35.78 (1.409)	30.48 (1.200)	43.45 (1.711)	9
60	8855-060-174□D-F	58.80 (2.315)	52.80 (2.079)	46.15 (1.817)	47.00 (1.850)	42.13 (1.659)	36.83 (1.450)	49.80 (1.961)	8
68	8855-068-174□D-F	63.88 (2.515)	57.88 (2.279)	51.23 (2.017)	52.08 (2.050)	47.21 (1.859)	41.91 (1.650)	54.88 (2.161)	7
80	8855-080-174□D-F	71.50 (2.815)	65.50 (2.579)	58.85 (2.317)	59.70 (2.350)	54.83 (2.159)	49.53 (1.950)	62.50 (2.461)	7

# 8855-100-174□D-F (Cable plug, 100 pin)

Unit : mm(inch)



Packaging style
Pipe

**Product Table**

No. of contacts	Part Number	Number of packaging
100	8855-100-174□D-F	5

## CABLE ASSEMBLY

### ORDER CODE

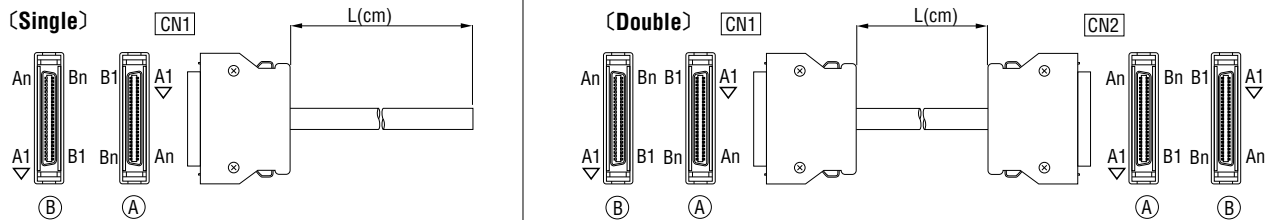
Cable side connector(20~80 pin)

**8840S** - - **174** **DF** -

①      ②      ③   ④ ⑤ ⑥      ⑦      ⑧ ⑨ ⑩

- ① **[Diecast cover]** 8840S : Straight cable exit
- ② **[Number of contacts]** 020 : 20pin 028 : 28pin 034 : 34pin 050 : 50pin 060 : 60pin 068 : 68pin 080 : 80pin
- ③ **[Contact name]** 174
- ④ **[Recommended cable]** A : #28 AWG (7/0.127) Discrete wire cable B : #28 AWG (7/0.127) Laminated wire cable
- ⑤ **[Plating of contact area]** D : 0.25 $\mu$ m min.
- ⑥ **[RoHS]** F : RoHS compliant
- ⑦ **[Cable length(cm)]** L : (Example: 008=8cm)
- ⑧ **[Wiring code]** S : Single W : Double
- ⑨ **[Connector direction]** Left:CN1,Right:CN2 (W:Double) 1 : AA 2 : AB 3 : BA 4 : BB (S:Single) 5 : A 6 : B
- ⑩ **[Wiring identifier]** H : Standard wiring J : Semi-standard wiring

#### ► Cable assemblies



▽= Polarity identification

### ORDER CODE

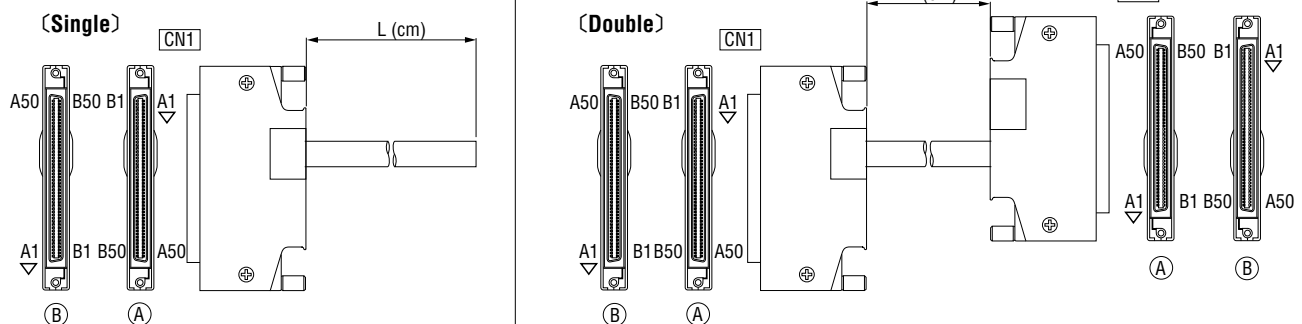
Cable side connector(100 pin)

**8840S** - **100** - **174** **DF** -

①      ②      ③   ④ ⑤ ⑥ ⑦      ⑧      ⑨ ⑩ ⑪

- ① **[Diecast cover]** 8840S : Straight cable exit
- ② **[Number of contacts]** 100 : 100pin
- ③ **[Contact name]** 174
- ④ **[Recommended cable]** A : #28 AWG (7/0.127) Discrete wire cable B : #28 AWG (7/0.127) Laminated wire cable
- ⑤ **[Plating of contact area]** D : 0.25 $\mu$ m min.
- ⑥ **[RoHS]** F : RoHS compliant
- ⑦ **[Mounting panel thickness]** 1 : No panel 2 : Panel thickness from 0.8~1.0mm 3 : Panel thickness of 1.6mm
- ⑧ **[Cable length(cm)]** L : (Example: 008=8cm)
- ⑨ **[Wiring code]** S : Single W : Double
- ⑩ **[Connector direction]** Left:CN1,Right:CN2 (W:Double) 1 : AA 2 : AB 3 : BA 4 : BB (S:Single) 5 : A 6 : B
- ⑪ **[Wiring identifier]** H : Standard wiring J : Semi-standard wiring

#### ► Cable assemblies



▽= Polarity identification

**ORDER CODE**

Cable Plug

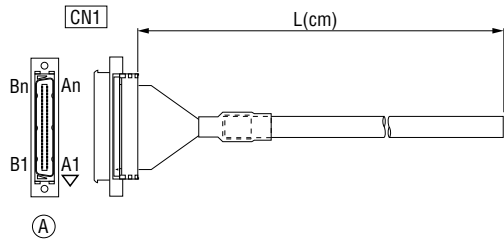
**8855**-      -**174**  **DF**-                  

①      ②      ③      ④ ⑤ ⑥      ⑦      ⑧ ⑨ ⑩

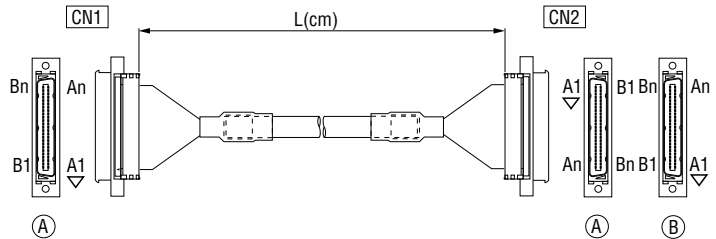
- ① **[Type] 8855** : Straight cable exit
- ② **[Number of contacts]** 020 : 20pin   028 : 28pin   034 : 34pin   050 : 50pin   060 : 60pin   068 : 68pin   080 : 80pin   100 : 100pin
- ③ **[Contact name]** 174
- ④ **[Recommended cable]** A : #28 AWG (7/0.127) Discrete wire cable   B : #28 AWG (7/0.127) Laminated wire cable
- ⑤ **[Plating of contact area]** D : 0.25μm min.
- ⑥ **[RoHS]** F : RoHS compliant
- ⑦ **[Cable length(cm)]** L : (Example: 013=13cm)
- ⑧ **[Wiring code]** S : Single   W : Double
- ⑨ **[Connector direction]** Left:CN1,Right:CN2 (W:Double) 1 : AA   2 : AB (S:Single) 5 : A
- ⑩ **[Wiring identifier]** H : Standard wiring   J : Semi-standard wiring

► Cable assemblies

(Single)



(Double)



▽= Polarity identification

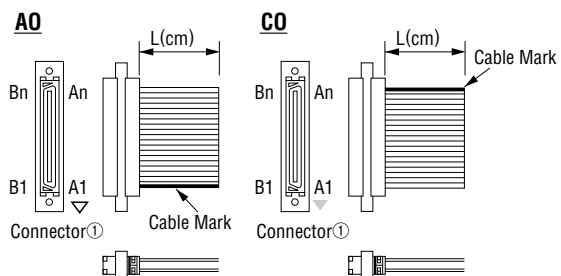
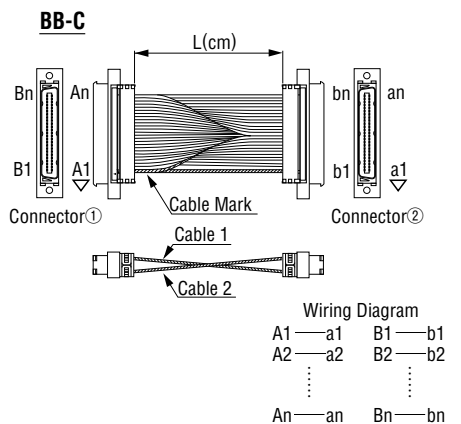
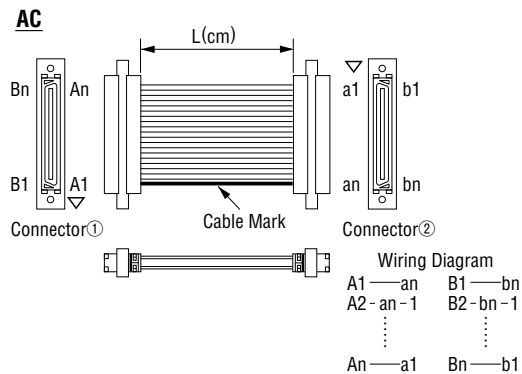
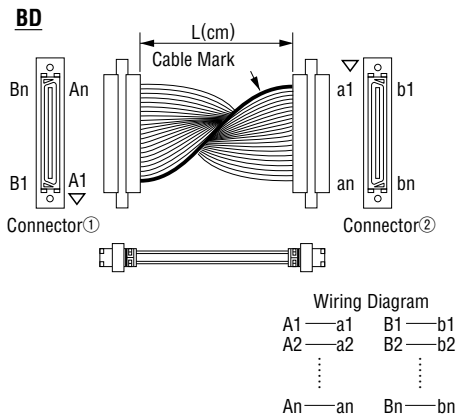
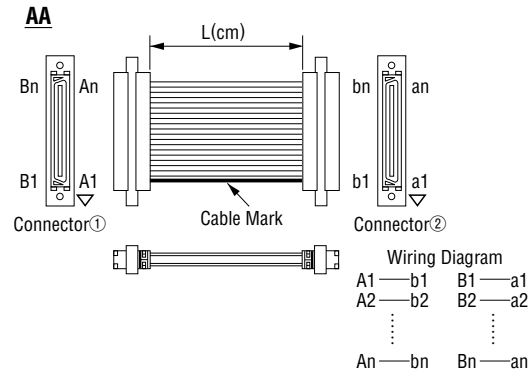
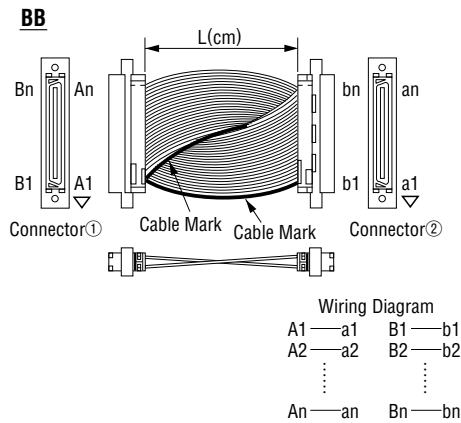
For harness quotations, a salesperson needs to contact you. Please contact your local KEL sales office.  
For S(Wiring Code), orders are accepted in even quantities.

**ORDER CODE**
**Cable plug(Flat ribbon type)**
**8855-** **-174 FDF-** **-**

① ② ③ ④ ⑤ ⑥ ⑦ ⑧ ⑨ ⑩

- ① **[Type]** 8855 : Cable plug
- ② **[Number of contacts]** 020 : 20pin 028 : 28pin 034 : 34pin 050 : 50pin 060 : 60pin 068 : 68pin 080 : 80pin 100 : 100pin
- ③ **[Contact name]** 174
- ④ **[Recommended cable]** F : #28 AWG (7/0.127) Flat cable
- ⑤ **[Plating of contact area]** D : 0.25 $\mu$ m or min.(Standard)
- ⑥ **[RoHS]** F : RoHS compliant
- ⑦ **[Cable length(cm)]** L : (Example: 013=13cm)
- ⑧ **[Cable type]** Omit : Flat cable(Standard) S : Intermittent bonded cable\* T : Twist & Flat cable\*
- ⑨ **[Wiring code]** AA,AC,BB,BD,AO,CO
- ⑩ **[Wiring type]** Omit : Twist type C : Through type(Wiring code : BB)

Only flat and twisted-flat cables are available for BB and BD-wired products.  
 Flat and twisted-flat cables have a limited L dimension as they are IDC at the fused connections.

**► Cable assemblies**


▽= Polarity identification

# 8840/8855 Standard Wiring Table

Standard wiring table (20 pin)

Wire No.	Twist No.	Wire Color	Mark Color	Marking	CN1 Pin No.	CN2 Pin No.
1					A1	A1
2	1	Orange	Red		A2	A2
3					A3	A3
4	2	Gray	Red		A4	A4
5					A5	A5
6	3	White	Red		A6	A6
7					A7	A7
8	4	Yellow	Red		A8	A8
9					A9	A9
10	5	Pink	Red		A10	A10
11					B1	B1
12	6	Orange	Red		B2	B2
13					B3	B3
14	7	Gray	Red		B4	B4
15					B5	B5
16	8	White	Red		B6	B6
17					B7	B7
18	9	Yellow	Red		B8	B8
19					B9	B9
20	10	Pink	Red		B10	B10

Standard wiring table (28 pin)

Wire No.	Twist No.	Wire Color	Mark Color	Marking	CN1 Pin No.	CN2 Pin No.
1					A1	A1
2	1	Orange	Red		A2	A2
3					A3	A3
4	2	Gray	Red		A4	A4
5					A5	A5
6	3	White	Red		A6	A6
7					A7	A7
8	4	Yellow	Red		A8	A8
9					A9	A9
10	5	Pink	Red		A10	A10
11					A11	A11
12	6	Orange	Red		A12	A12
13					A13	A13
14	7	Gray	Red		A14	A14
15					B1	B1
16	8	White	Red		B2	B2
17					B3	B3
18	9	Yellow	Red		B4	B4
19					B5	B5
20	10	Pink	Red		B6	B6
21					B7	B7
22	11	Orange	Red		B8	B8
23					B9	B9
24	12	Gray	Red		B10	B10
25					B11	B11
26	13	White	Red		B12	B12
27					B13	B13
28	14	Yellow	Red		B14	B14

Standard wiring table (34 pin)

Wire No.	Twist No.	Wire Color	Mark Color	Marking	CN1 Pin No.	CN2 Pin No.
1					A1	A1
2	1	Orange	Red		A2	A2
3					A3	A3
4	2	Gray	Red		A4	A4
5					A5	A5
6	3	White	Red		A6	A6
7					A7	A7
8	4	Yellow	Red		A8	A8
9					A9	A9
10	5	Pink	Red		A10	A10
11					A11	A11
12	6	Orange	Red		A12	A12
13					A13	A13
14	7	Gray	Red		A14	A14
15					A15	A15
16	8	White	Red		A16	A16
17					A17	A17
18	9	Yellow	Red		B1	B1
19					B2	B2
20	10	Pink	Red		B3	B3
21					B4	B4
22	11	Orange	Red		B5	B5
23					B6	B6
24	12	Gray	Red		B7	B7
25					B8	B8
26	13	White	Red		B9	B9
27					B10	B10
28	14	Yellow	Red		B11	B11
29					B12	B12
30	15	Pink	Red		B13	B13
31					B14	B14
32	16	Orange	Red		B15	B15
33					B16	B16
34	17	Gray	Red		B17	B17
35						
36	18	White	Red			

Standard wiring table (80 pin)

Wire No.	Twist No.	Wire Color	Mark Color	Marking	CN1 Pin No.	CN2 Pin No.	Wire No.	Twist No.	Wire Color	Mark Color	Marking	CN1 Pin No.	CN2 Pin No.
1					A1	A1	41	21	Orange	Red		B1	B1
2	1	Orange	Red		A2	A2	42					B2	B2
3					A3	A3	43	22	Gray	Red		B3	B3
4	2	Gray	Red		A4	A4	44					B4	B4
5					A5	A5	45	23	White	Red		B5	B5
6	3	White	Red		A6	A6	46					B6	B6
7					A7	A7	47	24	Yellow	Red		B7	B7
8	4	Yellow	Red		A8	A8	48					B8	B8
9					A9	A9	49	25	Pink	Red		B9	B9
10	5	Pink	Red		A10	A10	50					B10	B10
11					A11	A11	51	26	Orange	Red		B11	B11
12	6	Orange	Red		A12	A12	52					B12	B12
13					A13	A13	53	27	Gray	Red		B13	B13
14	7	Gray	Red		A14	A14	54					B14	B14
15					A15	A15	55	28	White	Red		B15	B15
16	8	White	Red		A16	A16	56					B16	B16
17					A17	A17	57	29	Yellow	Red		B17	B17
18	9	Yellow	Red		A18	A18	58					B18	B18
19					A19	A19	59	30	Pink	Red		B19	B19
20	10	Pink	Red		A20	A20	60					B20	B20
21					A21	A21	61	31	Orange	Red		B21	B21
22	11	Orange	Red		A22	A22	62					B22	B22
23					A23	A23	63	32	Gray	Red		B23	B23
24	12	Gray	Red		A24	A24	64					B24	B24
25					A25	A25	65	33	White	Red		B25	B25
26	13	White	Red		A26	A26	66					B26	B26
27					A27	A27	67	34	Yellow	Red		B27	B27
28	14	Yellow	Red		A28	A28	68					B28	B28
29					A29	A29	69	35	Pink	Red		B29	B29
30	15	Pink	Red		A30	A30	70					B30	B30
31					A31	A31	71	36	Orange	Red		B31	B31
32	16	Orange	Red		A32	A32	72					B32	B32
33					A33	A33	73	37	Gray	Red		B33	B33
34	17	Gray	Red		A34	A34	74					B34	B34
35					A35	A35	75	38	White	Red		B35	B35
36	18	White	Red		A36	A36	76					B36	B36
37					A37	A37	77	39	Yellow	Red		B37	B37
38	19	Yellow	Red		A38	A38	78					B38	B38
39					A39	A39	79	40	Pink	Red		B39	B39
40	20	Pink	Red		A40	A40	80					B40	B40

Standard wiring table (60 pin)

Wire No.	Twist No.	Wire Color	Mark Color	Marking	CN1 Pin No.	CN2 Pin No.
1					A1	A1
2	1	Orange	Red		A2	A2
3					A3	A3
4	2	Gray	Red		A4	A4
5					A5	A5
6	3	White	Red		A6	A6
7					A7	A7
8	4	Yellow	Red		A8	A8
9					A9	A9
10	5	Pink	Red		A10	A10
11					A11	A11
12	6	Orange	Red		A12	A12
13					A13	A13
14	7	Gray	Red		A14	A14
15					A15	A15
16	8	White	Red		A16	A16
17					A17	A17
18	9	Yellow	Red		A18	A18
19					A19	A19
20	10	Pink	Red		A20	A20
21					A21	A21
22	11	Orange	Red		A22	A22
23					A23	A23
24	12	Gray	Red		A24	A24
25					A25	A25
26	13	White	Red		A26	A26
27					A27	A27
28	14	Yellow	Red		A28	A28
29					A29	A29
30	15	Pink	Red		A30	A30
31					B1	B1
32	16	Orange	Red		B2	B2
33					B3	B3
34	17	Gray	Red		B4	B4
35					B5	B5
36	18	White	Red		B6	B6
37					B7	B7
38	19	Yellow	Red		B8	B8
39					B9	B9
40	20	Pink	Red		B10	B10
41					B11	B11
42	21	Orange	Red		B12	B12
43					B13	B13
44	22	Gray	Red		B14	B14
45					B15	B15
46	23	White	Red		B16	B16
47					B17	B17
48	24	Yellow	Red		B18	B18
49					B19	B19
50	25	Pink	Red		B20	B20
51					B21	B21
52	26	Orange	Red		B22	B22
53					B23	B23
54	27	Gray	Red		B24	B24
55					B25	B25
56	28	White	Red		B26	B26
57					B27	B27
58	29	Yellow	Red		B28	B28
59					B29	B29
60	30	Pink	Red		B30	B30
61					B31	B31
62	31	Orange	Red		B32	B32
63					B33	B33
64	32	Gray	Red		B34	B34
65					B35	B35
66	33	White	Red		B36	B36
67					B37	B37
68	34	Yellow	Red		B38	B38

Standard wiring table (68 pin)

Wire No.	Twist No.	Wire Color	Mark Color	Marking	CN1 Pin No.	CN2 Pin No.
1					A1	A1
2	1	Orange	Red		A2	A2
3					A3	A3
4	2	Gray	Red		A4	A4
5					A5	A5
6	3	White	Red		A6	A6
7					A7	A7
8	4	Yellow	Red		A8	A8
9					A9	A9
10	5	Pink	Red		A10	A10
11					A11	A11
12	6	Orange	Red		A12	A12
13					A13	A13
14	7	Gray	Red		A14	A14
15					A15	A15
16	8	White	Red		A16	A16
17					A17	A17
18	9	Yellow	Red		A18	A18
19					A19	A19
20	10	Pink	Red		A20	A20
21					A21	A21
22	11	Orange	Red		A22	A22
23					A23	A23
24	12	Gray	Red		A24	A24
25					A25	A25
26	13	White	Red		A26	A26
27					A27	A27

# 8840/8855 Standard Wiring Table

Standard wiring table(20pin)

Wire No.	Twist No.	Wire Color	Mark Color	Marking	CN1 Pin No.	CN2 Pin No.
1		Orange	Red		A1	A1
2	1	Orange	Black		B1	B1
3		Gray	Red		A2	A2
4	2	Gray	Black		B2	B2
5		White	Red		A3	A3
6	3	White	Black		B3	B3
7		Yellow	Red		A4	A4
8	4	Yellow	Black		B4	B4
9		Pink	Red		A5	A5
10	5	Pink	Black		B5	B5
11		Orange	Red	:	A6	A6
12	6	Orange	Black	:	B6	B6
13		Gray	Red		A7	A7
14	7	Gray	Black		B7	B7
15		White	Red		A8	A8
16	8	White	Black		B8	B8
17		Yellow	Red		A9	A9
18	9	Yellow	Black		B9	B9
19		Pink	Red		A10	A10
20	10	Pink	Black		B10	B10

Semi-Standard wiring table (28 pin)

Wire No.	Twist No.	Wire Color	Mark Color	Marking	CN1 Pin No.	CN2 Pin No.
1		Orange	Red		A1	A1
2	1	Orange	Black		B1	B1
3		Gray	Red		A2	A2
4	2	Gray	Black		B2	B2
5		White	Red		A3	A3
6	3	White	Black		B3	B3
7		Yellow	Red		A4	A4
8	4	Yellow	Black		B4	B4
9		Pink	Red		A5	A5
10	5	Pink	Black		B5	B5
11		Orange	Red	:	A6	A6
12	6	Orange	Black	:	B6	B6
13		Gray	Red		A7	A7
14	7	Gray	Black		B7	B7
15		White	Red		A8	A8
16	8	White	Black		B8	B8
17		Yellow	Red		A9	A9
18	9	Yellow	Black		B9	B9
19		Pink	Red		A10	A10
20	10	Pink	Black		B10	B10
21		Orange	Red	:	A11	A11
22	11	Orange	Black	:	B11	B11
23		Gray	Red		A12	A12
24	12	Gray	Black		B12	B12
25		White	Red		A13	A13
26	13	White	Black		B13	B13
27		Yellow	Red		A14	A14
28	14	Yellow	Black		B14	B14

Semi-Standard wiring table (34 pin)

Wire No.	Twist No.	Wire Color	Mark Color	Marking	CN1 Pin No.	CN2 Pin No.
1		Orange	Red		A1	A1
2	1	Orange	Black		B1	B1
3		Gray	Red		A2	A2
4	2	Gray	Black		B2	B2
5		White	Red		A3	A3
6	3	White	Black		B3	B3
7		Yellow	Red		A4	A4
8	4	Yellow	Black		B4	B4
9		Pink	Red		A5	A5
10	5	Pink	Black		B5	B5
11		Orange	Red	:	A6	A6
12	6	Orange	Black	:	B6	B6
13		Gray	Red		A7	A7
14	7	Gray	Black		B7	B7
15		White	Red		A8	A8
16	8	White	Black		B8	B8
17		Yellow	Red		A9	A9
18	9	Yellow	Black		B9	B9
19		Pink	Red		A10	A10
20	10	Pink	Black		B10	B10
21		Orange	Red	:	A11	A11
22	11	Orange	Black	:	B11	B11
23		Gray	Red		A12	A12
24	12	Gray	Black		B12	B12
25		White	Red		A13	A13
26	13	White	Black		B13	B13
27		Yellow	Red		A14	A14
28	14	Yellow	Black		B14	B14
29		Pink	Red		A15	A15
30	15	Pink	Black		B15	B15
31		Orange	Red	:	A16	A16
32	16	Orange	Black	:	B16	B16
33		Gray	Red		A17	A17
34	17	Gray	Black		B17	B17
35		White	Red			
36	18	White	Black			

Semi-Standard wiring table (80 pin)

Wire No.	Twist No.	Wire Color	Mark Color	Marking	CN1 Pin No.	CN2 Pin No.	Wire No.	Twist No.	Wire Color	Mark Color	Marking	CN1 Pin No.	CN2 Pin No.
1		Orange	Red		A1	A1	21	Orange	Red	Black		A21	A21
2	1	Orange	Black		B1	B1	42	21	Orange	Red	Black	B21	B21
3		Gray	Red		A2	A2	43	22	Gray	Red	Black	A22	A22
4	2	Gray	Black		B2	B2	44	22	Gray	Red	Black	B22	B22
5		White	Red		A3	A3	45	23	White	Red	Black	A23	A23
6	3	White	Black		B3	B3	46	23	White	Red	Black	B23	B23
7		Yellow	Red		A4	A4	47	24	Yellow	Red	Black	A24	A24
8	4	Yellow	Black		B4	B4	48	24	Yellow	Red	Black	B24	B24
9		Pink	Red		A5	A5	49	25	Pink	Red	Black	A25	A25
10	5	Pink	Black		B5	B5	50	25	Pink	Red	Black	B25	B25
11		Orange	Red	:	A6	A6	51	26	Orange	Red	Black	A26	A26
12	6	Orange	Black	:	B6	B6	52	26	Orange	Red	Black	B26	B26
13		Gray	Red		A7	A7	53	27	Gray	Red	Black	A27	A27
14	7	Gray	Black		B7	B7	54	27	Gray	Red	Black	B27	B27
15		White	Red		A8	A8	55	28	White	Red	Black	A28	A28
16	8	White	Black		B8	B8	56	28	White	Red	Black	B28	B28
17		Yellow	Red		A9	A9	57	29	Yellow	Red	Black	A29	A29
18	9	Yellow	Black		B9	B9	58	29	Yellow	Red	Black	B29	B29
19		Pink	Red		A10	A10	59	30	Pink	Red	Black	A30	A30
20	10	Pink	Black		B10	B10	60	30	Pink	Red	Black	B30	B30
21		Orange	Red	:	A11	A11	61	31	Orange	Red	Black	A31	A31
22	11	Orange	Black	:	B11	B11	62	31	Orange	Red	Black	B31	B31
23		Gray	Red		A12	A12	63	32	Gray	Red	Black	A32	A32
24	12	Gray	Black		B12	B12	64	32	Gray	Red	Black	B32	B32
25		White	Red		A13	A13	65	33	White	Red	Black	A33	A33
26	13	White	Black		B13	B13	66	33	White	Red	Black	B33	B33
27		Yellow	Red		A14	A14	67	34	Yellow	Red	Black	A34	A34
28	14	Yellow	Black		B14	B14	68	34	Yellow	Red	Black	B34	B34
29		Pink	Red		A15	A15	69	35	Pink	Red	Black	A35	A35
30	15	Pink	Black		B15	B15	70	35	Pink	Red	Black	B35	B35
31		Orange	Red	:	A16	A16	71	36	Orange	Red	Black	A36	A36
32	16	Orange	Black	:	B16	B16	72	36	Orange	Red	Black	B36	B36
33		Gray	Red		A17	A17	73	37	Gray	Red	Black	A37	A37
34	17	Gray	Black		B17	B17	74	37	Gray	Red	Black	B37	B37
35		White	Red		A18	A18	75	38	White	Red	Black	A38	A38
36	18	White	Black		B18	B18	76	38	White	Red	Black	B38	B38
37		Yellow	Red		A19	A19	77	39	Yellow	Red	Black	A39	A39
38	19	Yellow	Black		B19	B19	78	39	Yellow	Red	Black	B39	B39
39		Pink	Red		A20	A20	79	40	Pink	Red	Black	A40	A40
40	20	Pink	Black		B20	B20	80	40	Pink	Red	Black	B40	B40

Semi-Standard wiring table (60 pin)

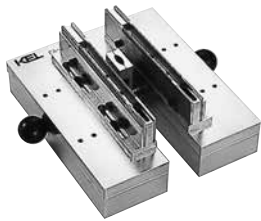
Wire No.	Twist No.	Wire Color	Mark Color	Marking	CN1 Pin No.	CN2 Pin No.
1		Orange	Red		A1	A1
2	1	Orange	Black		B1	B1
3		Gray	Red		A2	A2
4	2	Gray	Black		B2	B2
5		White	Red		A3	A3
6	3	White	Black		B3	B3
7		Yellow	Red		A4	A4
8	4	Yellow	Black		B4	B4
9		Pink	Red		A5	A5
10	5	Pink	Black		B5	B5
11		Orange	Red	:	A6	A6
12	6	Orange	Black	:	B6	B6
13		Gray	Red		A7	A7
14	7	Gray	Black		B7	B7
15		White	Red		A8	A8
16	8	White	Black		B8	B8
17		Yellow	Red		A9	A9
18	9	Yellow	Black		B9	B9
19		Pink	Red		A10	A10
20	10	Pink	Black		B10	B10
21		Orange	Red	:	A11	A11
22	11	Orange	Black	:	B11	B11
23		Gray	Red		A12	A12
24	12	Gray	Black		B12	B12
25		White	Red		A13	A13
26	13	White	Black		B13	B13
27		Yellow	Red		A14	A14
28	14	Yellow	Black		B14	B14
29		Pink	Red		A15	A15
30	15	Pink	Black		B15	B15
31		Orange	Red	:	A16	A16
32	16	Orange	Black	:	B16	B16
33		Gray	Red		A17	A17
34	17	Gray	Black		B17	B17
35		White	Red		A18	A18
36	18	White	Black		B18	B18
37		Yellow	Red		A19	A19
38	19	Yellow	Black		B19	B19
39		Pink	Red		A20	A20
40	20	Pink	Black		B20	B20
41		Orange	Red	:	A21	A21
42	21	Orange	Black	:	B21	B21
43		Gray	Red		A22	A22
44	22	Gray	Black		B22	B22
45		White	Red		A23	A23
46	23	White	Black		B23	B23
47		Yellow	Red		A24	A24
48	24	Yellow	Black		B24	B24
49		Pink	Red		A25	A25
50	25	Pink	Black		B25	B25
51		Orange	Red	:	A26	A26
52	26	Orange	Black	:	B26	B26
53		Gray	Red		A27	A27
54	27	Gray	Black		B27	B27
55		White	Red		A28	A28
56	28	White	Black		B28	B28
57		Yellow	Red		A29	A29
58	29	Yellow	Black		B29	B29
59		Pink	Red		A30	A30
60	30	Pink	Black		B30	B30
61		Orange	Red	:	A31	A31
62	31	Orange	Black	:	B31	B31
63		Gray	Red		A32	A32
64	32	Gray	Black		B32	B32
65		White	Red		A33	A33
66	33	White	Black		B33	B33
67		Yellow	Red		A34	A34
68	34	Yellow	Black		B34	B34

Semi-Standard wiring table (68 pin)

Wire No.	Twist No.	Wire Color	Mark Color	Marking	CN1 Pin No.	CN2 Pin No.
1		Orange	Red		A1	A1
2	1	Orange	Black		B1	B1
3		Gray	Red		A2	A2
4	2	Gray	Black		B2	B2
5		White	Red		A3	A3
6	3	White	Black		B3	B3
7		Yellow	Red		A4	A4
8	4	Yellow	Black		B4	B4
9		Pink	Red		A5	A5
10	5	Pink	Black		B5	B5
11		Orange	Red	:	A6	A6
12	6	Orange	Black	:	B6	B6
13		Gray	Red		A7	A7

## CABLE ASSEMBLY TOOLS

### CA-10-1 Cable assembly base for discrete wire



Base for use with pusher and combs

### CA-10-2 Pusher



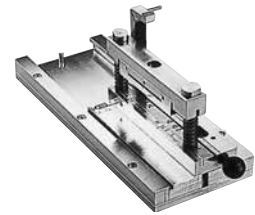
For pressing discrete wires in CA-10-3 and CA-10-4 comb.

### CA-10-4(for $\phi 0.62$ ) Comb



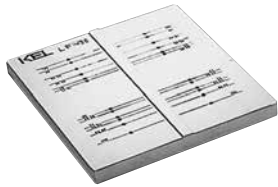
Aligns discrete wires in cover of the connector

### CA-30 Cable assembly base for laminated wire



Press laminated cable into the cover of the connector.

### LF-30-1 Locating Fixture



Terminates 8840/55 to laminated or discrete wire.

### LF-30-2 Guide



Positions 8840 for termination

### LF-30-3 Guide



Positions 8855 for termination

### LF-30-4 Seating platen



Applies pressure for termination of 8840/55

### ◆Assembly tool combination

Series	Jig	Hand press	Cable assembly base	Pusher	Comb	Locating fixture	Guide	Seating platen	Option
<b>8840 Series</b> (Receptacle)	Discrete wire cable	HP-12	CA-10-1	CA-10-2	CA-10-3 CA-10-4*	LF-30-1	LF-30-2	LF-30-4	ST-10 Sliding base
	Laminated cable		Cable assembly base for laminated wire CA-30						
<b>8855 Series</b> (Cable plug)	Discrete wire cable		CA-10-A	CA-10-2	CA-10-3 CA-10-4*		LF-30-3		
	Laminated cable		Cable assembly base for laminated wire CA-30						

(Notice)When you want to use discrete wire, you need the additional cable cutter (CT-14)

\*CA-10-3:For #28 AWG, CA-10-4:For #30 AWG

## OPTIONAL TOOLING

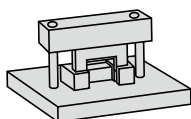
### HP-12 Hand press



### ST 10 Sliding base



### CT-14 Cutting jig



Sliding base increases output for all types of 8840/55 assemblies, and can be used with all assembly tooling in HP-12 press.