

# Multilayer Ceramic Chip Capacitors - MC Series

## Part Number Construction

MC0805	X	102	K	P	500	TR
Size <sup>1</sup>	T.C. <sup>2</sup>	Capacity <sup>3</sup>	Tolerance <sup>4</sup>	Termination <sup>5</sup>	VWDC <sup>6</sup>	Packaging <sup>7</sup>

1. **Size:** 0805, 1206, 1210, 1808, 1812
2. **Temperature Coefficient:** N=NPO; X=X7R; Z=Z5U
3. **Capacity:** The first two digits are significant, the last digit indicates the number of zeros.
4. **Tolerance:** F=1%; G=2%; J=5%; K=10%; M=20%; Z=+80/-20%
5. **Termination:** N=Nickel/Tin; P=Palladium Silver; S=Nickel/Solder
6. **Voltage:** 500=50WVDC; 101=100 WVDC
7. **Packaging:** Omit for bulk pack; TR=Tape and reel

## Mechanical Specifications

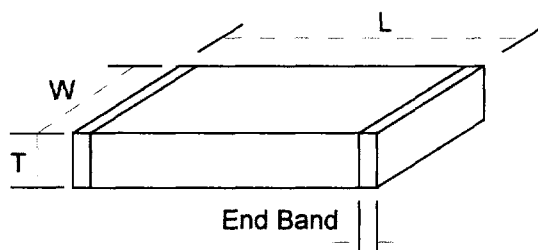
L	T
.080 (2.0)	.050
.125 (3.18)	.050
.125 (3.18)	.065
.180 (4.57)	.065
.175 (4.45)	.065

NOTE: L, W, and T measurements are maximum. Tolerance of End Band measurement is  $\pm 0.010$  or 7%, whichever is greater.

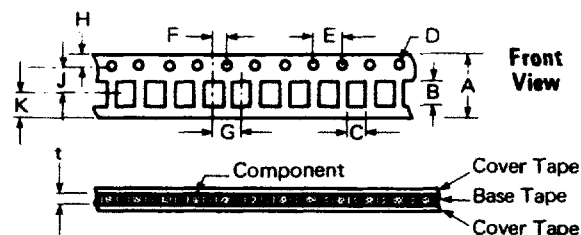
## Size & Capacitance (pF) Available

50 V	10-1,500	100-27,000	4,700-
100 V	10-1,000	100-15,000	100,000
50 V	10-3,300	120-68,000	10,000-
100 V	10-2,200	120-47,000	220,000
50 V	10-4,700	1,000-100,000	10,000-
100 V	10-3,300	1,000-68,000	470,000
50 V	1,000-8,200	10,000-100,000	100,000-
100 V	1,000-3,300	10,000-100,000	680,000
50 V	1,000-10,000	3,300-270,000	100,000-
100 V	1,000-8,200	3,300-180,000	1,000,000

Other items available upon request



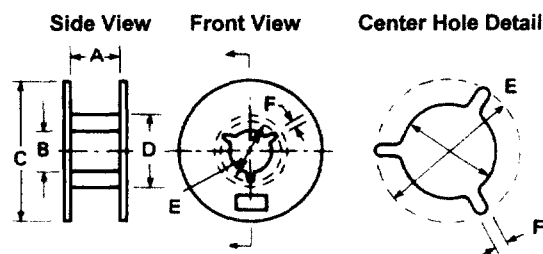
## Tape Assembly



0.315 $\pm$ .008	8.0 $\pm$ 0.2
**	**
.0157 $\pm$ .004	4.0 $\pm$ 0.01
0.157 $\pm$ .004	4.0 $\pm$ 0.1
0.138 $\pm$ .002	3.5 $\pm$ .05
**	**

\*\* Dimensions B and C of the pocket and the tape thickness T are dependent on the component size. Cumulative clearance between component and pocket is 0.4mm (.016 in)  $\pm$  0.1mm (.004 in) in either B or C dimension.

## Packaging Reel Assembly



Dimensions	Inches	Millimeters
A	0.433 $\pm$ .020	11 $\pm$ 0.5
B	0.512 $\pm$ .020	13 $\pm$ 0.5
C	7.00 $\pm$ .079	178 $\pm$ 2.0
D	1.97 min.	50 min.
E	0.669 min.	17 min.
F	0.079 $\pm$ 0.20	2.0 $\pm$ 0.5