

Specifications

Contact Resistance: 100mΩ max. at 1mA / 20mV max.
 Current Rating: 0.5A
 Operating Temp. Range: -40°C to +85°C
 Mating Cycles: 5 times

Materials and Finish

Insulator: LCP, glass filled (UL94V-0)
 Contacts: Phosphor Bronze
 Plating: Gold over Nickel

Features

- Automatic battery mounting possible
- Automatic pick / place mounting
- Tape and Reel packaging

Part Number (Details)

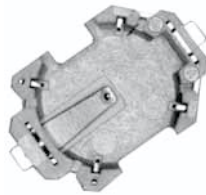
CN048S - 0005 *

Series No.

Design No.

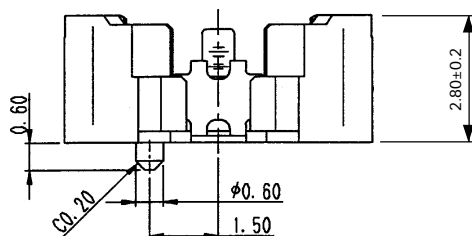
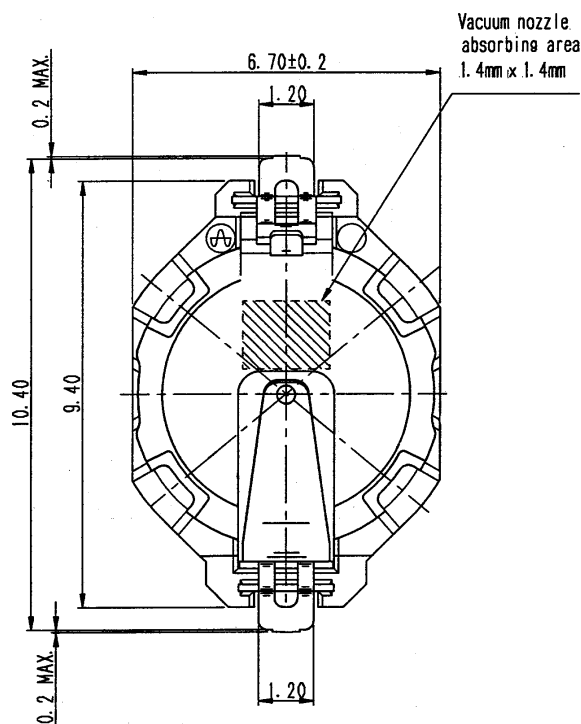
0 = Without Positioning Pins

1 = With Positioning Pins
(only on request)



Applicable Dimensions (Reference Only)

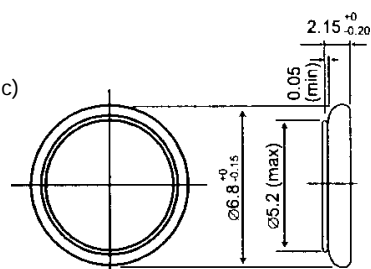
Outline Dimensions



Applicable Battery Types

Type 621

MS621F (SII)
 ML621S (Panasonic)
 ML621 (Sanyo)



Recommended PCB Layout

Top View

