

## MATERIAL

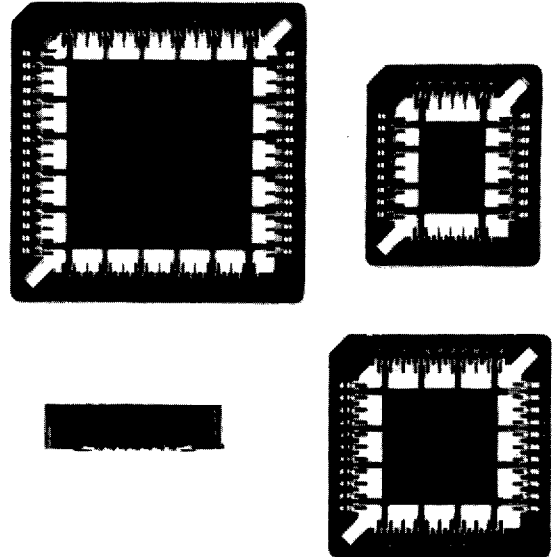
Insulator: Brown PPS (UL94V-0)  
Contact: Phosphor Bronze  
Contact Plating: Gold or Tin Over Nickel (see "Plating Option" below)

## SPECIFICATIONS

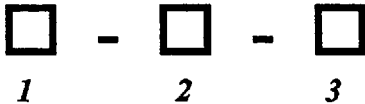
Current Rating: 1A Min  
Insulator Resistance: 1000 M $\Omega$  up  
Contact Resistance: 30 m $\Omega$  Max  
Voltage Rating: AC 500V R.M.S.  
Operating Temperature: -65°C - +125°C

## FEATURES

- Accept for JEDCE leadless chip (PLCC package)
- Low profile type
- With 1.27 pitch PCB layout
- Applicable for IR-Reflow or vapor phase soldering
- Visual window for solder-tails inspection
- Black PBT insulator available upon request
- Through hole version also available (see **PLCC Series**)



## HOW TO ORDER:

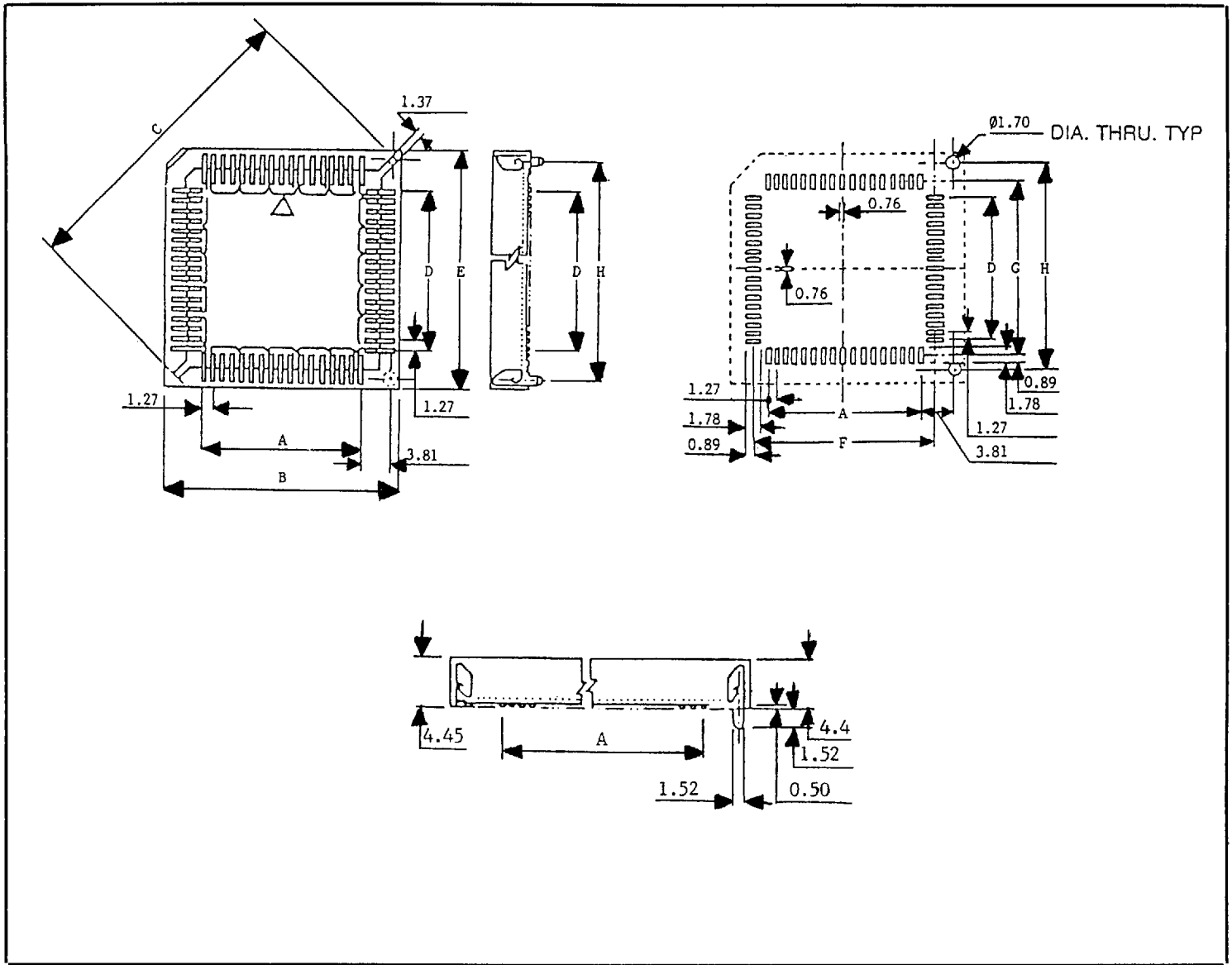


1. **SERIES**  
PLCCSM = PLCC Socket, Surface Mount

2. **POSITION**  
20 = 20 Position  
28 = 28 Position  
32 = 32 Position  
44 = 44 Position  
52 = 52 Position  
68 = 68 Position  
84 = 84 Position

3. **PLATING OPTION**  
T = Tin  
G = Full Gold Flash  
G15 = Full Gold, 15 $\mu$ "  
G30 = Full Gold, 30 $\mu$ "  
SG = Selective Gold Flash  
SG15 = Selective Gold, 15 $\mu$ "  
SG30 = Selective Gold, 30 $\mu$ "  
SG50 = Selective Gold, 50 $\mu$ "

**SPECIFICATIONS:**



**DIMENSIONS:**

POSITION	A	B	C	D	E	F	G	H
20	5.08	15.58	16.70	5.08	15.58	8.48	8.48	12.70
28	7.62	18.12	20.30	7.62	18.12	11.02	11.02	15.24
32	7.62	18.12	22.50	10.16	20.66	11.02	13.56	17.78
44	12.70	23.20	27.50	12.70	23.20	16.10	16.10	20.32
52	15.24	25.74	31.10	15.24	25.74	18.64	18.64	22.86
68	20.32	30.82	38.30	20.32	30.82	23.72	23.72	27.94
84	25.40	35.90	45.50	25.40	35.90	28.80	28.80	33.02

**ENGINEERS:** For detailed Data Sheets, including *tolerances*, see pages 157 & 159 or call us!