

NOTES:

- [1] THIS CONNECTOR IS DESIGNED TO MEET THE APPLICABLE PERFORMANCE REQUIREMENTS OF IEC 61076-4-101 AND BELL CORE GR-1217-CORE.
- 2. DELETED.
- 3. CONNECTORS ARE END STACKABLE ON A .07874in/2mm GRID.
- [4] FOR COMPLIANT CONTACT PLATED THRU HOLE REQUIREMENTS SEE THRU HOLE PLATING VIEW. MINIMUM P.C. BOARD THICKNESS .062/1.57 NOMINAL.
- [5] OPTIONAL BOTTOM SHIELD SOLD SEPARATELY.
- [6] NO GAP PERMISSIBLE TO PC BOARD.

**NX SERIES CODE ORDER CHART - MetCon-2® Daughtercard Socket Connectors**

**NX6A0AE01A1AF**

2mm DAUGHTER CARD SOCKET CONNECTOR WITH 110 COMPLIANT SIGNAL CONTACTS, MULTIPURPOSE CENTER, FULLY LOADED, TOP SHIELD [5]

REV	DESCRIPTION	BY DATE	APPD
E	REVISED PER ECR# 6900	DJP 11/27/01	W.P.M. 12/14/01

SPECIFICATIONS

MATERIALS

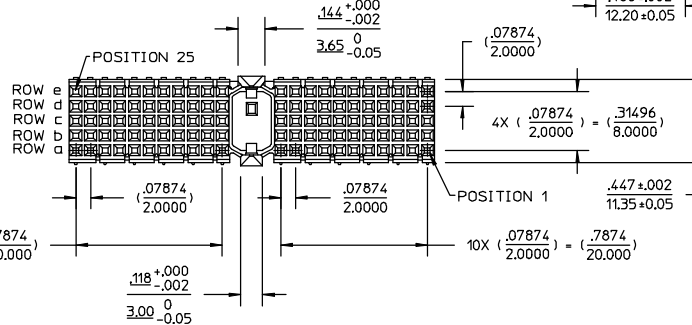
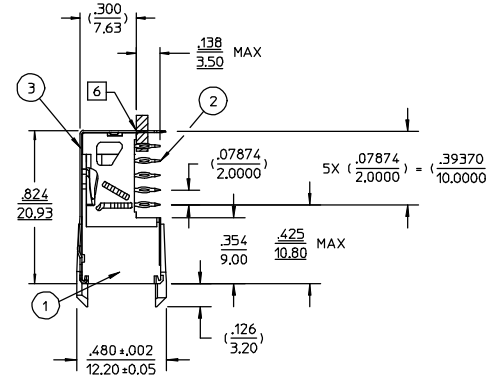
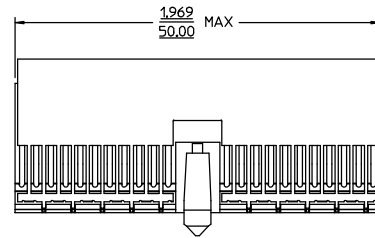
- [1] Insulators ————— Thermoplastic Polyester, glass filled  
Rated UL 94V-0, Color: Gray
- [2] Contacts ————— Copper Alloy  
Finish: Mating Zone = Gold over Palladium Nickel  
Compliant Zone = Tin/Lead  
Performance Level Z = 250 cycles
- [3] Top Shield ————— Copper Alloy  
Finish: Nickel Plate

PERFORMANCE CHARACTERISTICS [1]

Insulation resistance ————— 5,000 megohms minimum  
Dielectric withstanding voltage (at sea level) — 750 Vrms  
Current rating ————— 1 amp @ 70°C, fully loaded  
1.5 amp @ 20°C, fully loaded  
Operating temperature range ————— -55°C to +105°C  
Contact resistance ————— 20 milliohms maximum

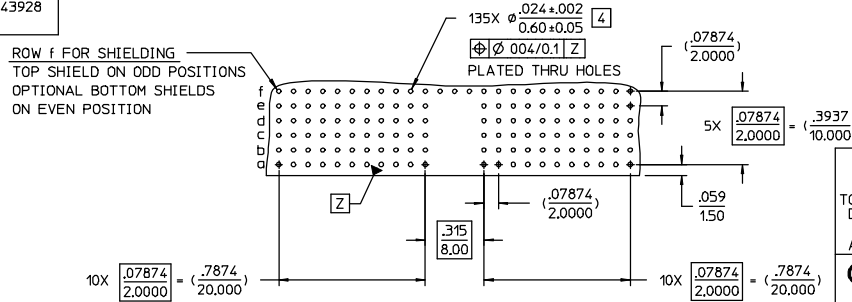
Compliant Contact

Max. Insertion Force (per contact) ————— 22.5 lbs. / 100 N  
Min. Retention Force (per contact) ————— 4.5 lbs. / 20 N

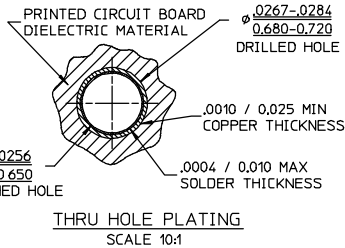


CATALOG No. NX6A0AE01A1AF SHOWN

CUSTOMER TOOLING REQUIRED			
DESCRIPTION	SEATING TOOL CATALOG No.	INSTRUCTION SHEET	DRAWING NUMBER
3U CompactPCI™ DAUGHTERCARDS PCB ASSEMBLY FIXTURE	107-43926	43521	43926
3U/6U CompactPCI™ DAUGHTERCARDS PCB ASSEMBLY FIXTURE	107-43927	43521	43927
FLAT ROCK SOCKET INSERTION TOOL FOR 5 ROW, 50 mm LONG SOCKET MODULES	107-43928-01	43521	43928



RECOMMENDED PC BOARD REQUIREMENTS (COMPONENT SIDE OF BOARD SHOWN)



PER ASME Y14.5M-1994 UNLESS OTHERWISE SPECIFIED: DIMENSIONS ARE IN INCHES OR INCHES/MM  
 TOLERANCES:  
 DECIMALS .XX ± .02/0.5  
 .XXX ± .004/0.10  
 ANGLES ± --- SCALE: 1:1

**Litton**  
 Winchester 400 Park Road  
 Relconn Watertown, Connecticut 06795

<b>CUSTOMER DRAWING</b>	
DRAWN C.W.B. 03/20/99	DATE APPROVED W.P.M. 04/19/99
APPROVED A.E.E. 04/19/99	DATE APPROVED S.W.A. 04/19/99

TITLE	MetCon-2® NX6 SERIES DAUGHTERCARD SOCKET CONNECTOR MODULE STYLE A
A	29617
SHT. 1 OF 1	REV. E