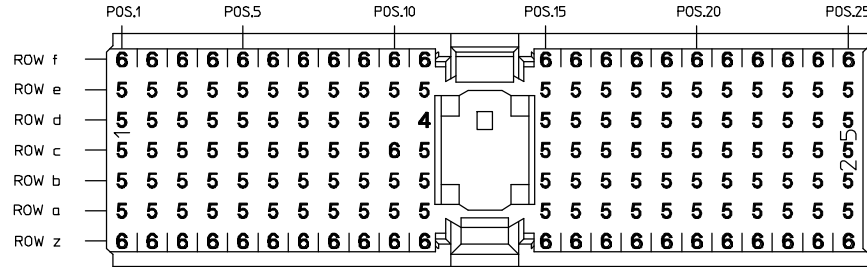


NOTES:

- 1 THIS CONNECTOR IS DESIGNED TO MEET THE APPLICABLE PERFORMANCE REQUIREMENTS OF IEC 61076-4-101 AND BELL CORE GR-1217-CORE.
- 2 REFER TO INDEX DOCUMENT No. 29600 FOR A CURRENT LISTING OF MetCon-2™ CONNECTOR SYSTEM INFORMATION.
3. CONNECTORS ARE END STACKABLE ON A .07874/2.0 GRID.
- 4 FOR COMPLIANT CONTACT PLATED THRU HOLE REQUIREMENTS SEE THRU HOLE PLATING VIEW. MINIMUM P.C. BOARD THICKNESS .062/1.57 NOMINAL.
- 5 DIMENSIONS APPLY AFTER INSTALLATION.
6. CONNECTOR WITH MIXED PIN LENGTH LOADING PER PICMG™ 2.0 R2.1.
- 7 .0078/0.2 MAX. GAP PERMISSIBLE TO PC BOARD.

NX SERIES - MetCon-2™ BACKPANEL PIN CONNECTORS

REV	DESCRIPTION	BY DATE	APPD
C	REVISED PER ECR# 6158	BAS 04/28/00	WPM



SELECTIVE LOADING CHART			
PIN CODE	MATING LENGTH		TERMINATION LENGTH L
	M	N	
4	.209/5.30	.323/8.20	.146/3.70
5	.268/6.80	.382/9.70	.146/3.70
6	.327/8.30	.441/11.20	.146/3.70

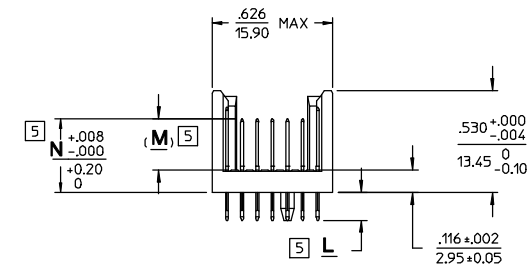
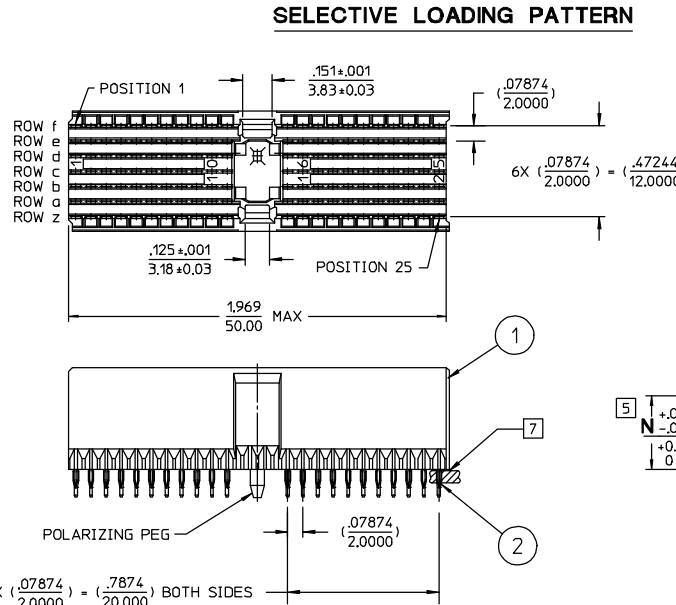
SPECIFICATIONS

MATERIALS

- 1 Insulators — Thermoplastic Polyester, glass filled Rated UL 94V-0. Color: Gray
- 2 Pin contacts — Copper Alloy Finish: Mating Zone = Gold over Palladium Nickel Compliant Zone = Tin/Lead

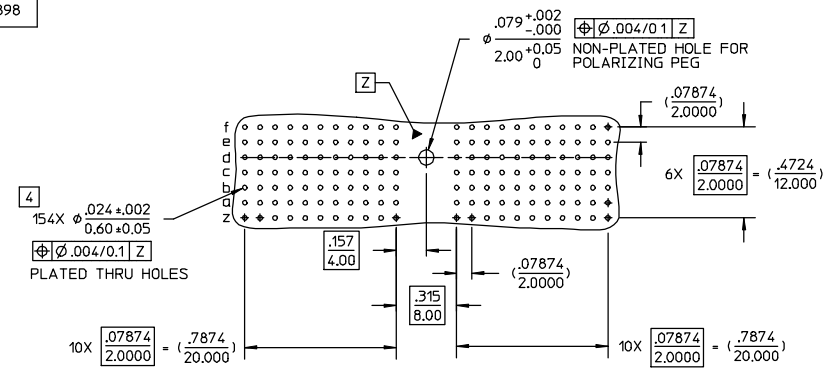
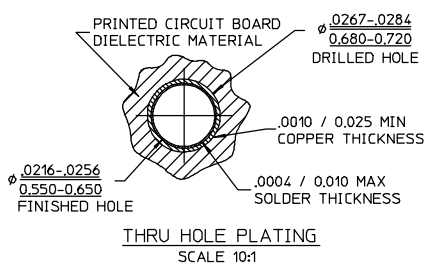
PERFORMANCE CHARACTERISTICS 1

- Insulation resistance — 5,000 megohms minimum
- Dielectric withstanding voltage (at sea level) — 750 Vrms
- Current rating — 1 amp @ 70°C, fully loaded
1.5 amp @ 20°C, fully loaded
- Operating temperature range — -55°C to +105°C
- Contact resistance — 20 milliohms maximum
- Performance level per IEC 61076-4-101 — level 2
- Compliant Contact
- Max. Insertion Force (per contact) — 22.5 lbs. / 100 N
- Min. Retention Force (per contact) — 4.5 lbs. / 20 N



CATALOG No. NX5A0BA21X04AA SHOWN

CUSTOMER TOOLING REQUIRED			
DESCRIPTION	SEATING TOOL CATALOG No.	INSTRUCTION SHEET	DRAWING NUMBER
BACKPANEL MODULE TYPE A	107-43896-01	43500	43896
INSERTION UNIT HOLDER 5 +2 ROW MODULES	107-43901-01	43500	43901
INSERTION TOOL FOR INDIVIDUAL SHIELDING CONTACTS	107-43900-01	43505	43900
INSERTION TOOL FOR INDIVIDUAL SIGNAL CONTACTS	107-43899-01	43504	43899
EXTRACTION TOOL FOR INDIVIDUAL CONTACTS	107-43898-01	43503	43898



RECOMMENDED PC BOARD REQUIREMENTS
(COMPONENT SIDE OF BOARD SHOWN)

PER ASME Y14.5M-1994 UNLESS OTHERWISE SPECIFIED: DIMENSIONS ARE IN INCHES OR INCHES/MM			
TOLERANCES: .XX ± .02/0.5 .XXX ± .004/0.10			
ANGLES ± --		SCALE: 1:1	
CUSTOMER DRAWING			
DRAWN	DATE	APPROVED	DATE
MJC	04/05/99	W.P.M.	04/21/99
APPROVED	DATE	APPROVED	DATE
A.E.E.	04/21/99	S.W.A.	04/21/99

Litton		400 Park Road Watertown, Connecticut 06795	
Winchester Relconn		TITLE	
		METCON-2™ NX5 SERIES BACKPANEL CONNECTORS MODULE STYLE A	
A	29660	SHT. 1 of 1	REV. C