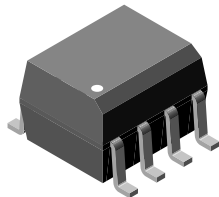
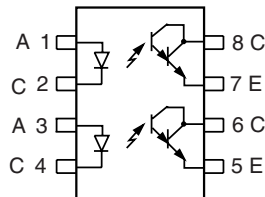


## Optocoupler, Photodarlington Output, Dual Channel, SOIC-8 package



i179042



### FEATURES

- Two Channel Optocoupler
- High Current Transfer Ratio at  $I_F = 1.0 \text{ mA}$ , 500 % Min.
- Isolation Test Voltage, 4000  $V_{RMS}$
- Electrical Specifications Similar to Standard 6-pin Coupler
- Compatible with Dual Wave, Vapor Phase and IR Reflow Soldering
- SOIC-8 Surface Mountable Package
- Standard Lead Spacing, 0.05"
- Available only on Tape and Reel (Conforms to EIA Standard 481-2)
- Lead (Pb)-free component
- Component in accordance to RoHS 2002/95/EC and WEEE 2002/96/EC


**RoHS**  
COMPLIANT

### DESCRIPTION

The ILD223T is a high current transfer ratio (CTR) optocoupler. It has a Gallium Arsenide infrared LED emitter and silicon NPN photodarlington transistor detector.

This device has CTRs tested at an LED current of 1.0 mA. This low drive current permits easy interfacing from CMOS to LSTTL or TTL.

The ILD223T is constructed in a standard SOIC-8 foot print which makes it ideally suited for high density applications. In addition to eliminating through hole requirements, this package conforms to standards for surface mounted devices.

### AGENCY APPROVALS

- UL1577, File No. E52744 System Code Y
- DIN EN 60747-5-2 (VDE0884) Available with Option 1

### ORDER INFORMATION

PART	REMARKS
ILD223T	CTR > 500 %, SOIC-8

For additional information on the available options refer to Option Information.

### ABSOLUTE MAXIMUM RATINGS<sup>1, 2)</sup>

PARAMETER	TEST CONDITION	SYMBOL	VALUE	UNIT
<b>INPUT</b>				
Peak reverse voltage		$V_R$	6.0	V
Peak pulsed current	1.0 $\mu\text{s}$ , 300 pps		3.0	A
Continuous forward current per channel			30	mA
Power dissipation		$P_{diss}$	45	mW
Derate linearly from 25 °C			0.4	mW/°C

**ABSOLUTE MAXIMUM RATINGS<sup>1, 2)</sup>**

PARAMETER	TEST CONDITION	SYMBOL	VALUE	UNIT
<b>OUTPUT</b>				
Collector-emitter breakdown voltage		$BV_{CEO}$	30	V
Emitter-collector breakdown voltage		$BV_{ECO}$	5.0	V
Power dissipation per channel		$P_{diss}$	75	mW
Derate linearly from 25°C			3.1	mW/°C
<b>COUPLER</b>				
Total package dissipation (2 LEDs and 2 detectors, 2 channels)		$P_{tot}$	240	mW
Derate linearly from 25 °C			2.0	mW/°C
Storage temperature		$T_{stg}$	- 55 to + 150	°C
Operating temperature		$T_{amb}$	- 55 to + 100	°C
Soldering time at 260 °C		$T_{sld}$		

Note:

1)  $T_{amb} = 25\text{ °C}$  unless otherwise specified.

2) Stresses in excess of the absolute Maximum Ratings can cause permanent damage to the device. Functional operation of the device is not implied at these or any other conditions in excess of those given in the operational sections of this document. Exposure to absolute Maximum Rating for extended periods of the time can adversely affect reliability.

**ELECTRICAL CHARACTERISTICS<sup>1) 2)</sup>**

PARAMETER	TEST CONDITION	PART	SYMBOL	MIN	TYP.	MAX	UNIT
<b>INPUT</b>							
Forward voltage	$I_F = 1.0\text{ mA}$		$V_F$			1.3	V
Reverse current	$V_R = 6.0$		$I_R$		0.1	100	μA
Capacitance	$V_F = 0\text{ V}, F = 1.0\text{ MHz}$		$C_O$		25		pF
<b>OUTPUT</b>							
Collector-emitter breakdown voltage	$I_C = 10\text{ μA}$		$BV_{CEO}$	30			V
Emitter-collector breakdown voltage	$I_C = 10\text{ μA}$		$BV_{ECO}$	5.0			V
Collector-emitter leakage current	$V_{CE} = 5.0\text{ V}, I_F = 0$		$I_{CEO}$			50	nA
Collector-emitter capacitance	$V_{CE} = 5.0\text{ V}$		$C_{CE}$		3.4		pF
<b>COUPLER</b>							
Capacitance (input-output)		ILD223T	$C_{IO}$	0.5			pF
Saturation voltage, collector-emitter	$I_F = 1.0\text{ mA}, I_{CE} = 0.5\text{ mA}$	ILD223T	$V_{CEsat}$			1.0	V
Resistance, input to output		ILD223T	$R_{IO}$	100			GΩ
Isolation test voltage	$t = 1.0\text{ sec.}$	ILD223T	$V_{ISO}$	4000			$V_{RMS}$

Note:

1)  $T_{amb} = 25\text{ °C}$  unless otherwise specified.

2) Minimum and maximum values are testing requirements. Typical values are characteristics of the device and are the result of engineering evaluation. Typical values are for information only and are not part of the testing requirements.

**CURRENT TRANSFER RATIO**

PARAMETER	TEST CONDITION	SYMBOL	MIN	TYP.	MAX	UNIT
DC Current Transfer Ratio	$I_F = 1.0\text{ mA}, V_{CE} = 5.0\text{ V}$	$CTR_{DC}$	500			%

**SWITCHING CHARACTERISTICS**

PARAMETER	TEST CONDITION	PART	SYMBOL	MIN	TYP.	MAX	UNIT
Turn-on time	$V_{CC} = 10\text{ V}$ , $R_L = 100\ \Omega$ , $I_F = 5.0\text{ mA}$	ILD223T	$t_{on}$	15			$\mu\text{s}$
Turn-off time	$V_{CC} = 10\text{ V}$ , $R_L = 100\ \Omega$ , $I_F = 5.0\text{ mA}$	ILD223T	$t_{off}$	30			$\mu\text{s}$

**SAFETY AND INSULATION RATINGS<sup>1)</sup>**

PARAMETER	TEST CONDITION	SYMBOL	MIN	TYP.	MAX	UNIT
Climatic classification (according to IEC 68 part 1)				55/100/21		
Comparative tracking index		CTI	175		399	
$V_{IOTM}$			6000			V
$V_{IORM}$			560			V
$P_{SO}$					350	mW
$I_{SI}$					150	mA
$T_{SI}$					165	°C
Creepage			4			mm
Clearance			4			mm
Insulation thickness, reinforced rated	per IEC60950 2.10.5.1		0.2			mm

Note:

<sup>1)</sup> As per IEC60747-5-2, §7.4.3.8.1, this optocoupler is suitable for “safe electrical insulation” only within the safety ratings. Compliance with the safety ratings shall be ensured by means of protective circuits.

**TYPICAL CHARACTERISTICS**

$T_{amb} = 25\text{ °C}$ , unless otherwise specified

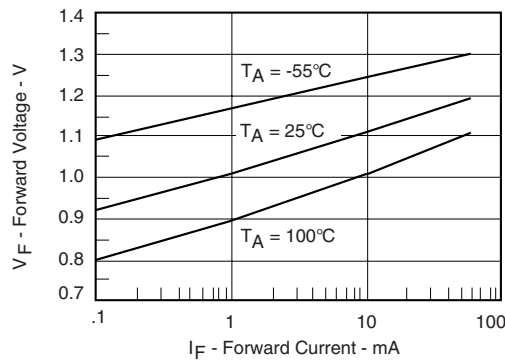


Figure 1. Forward Voltage vs. Forward Current

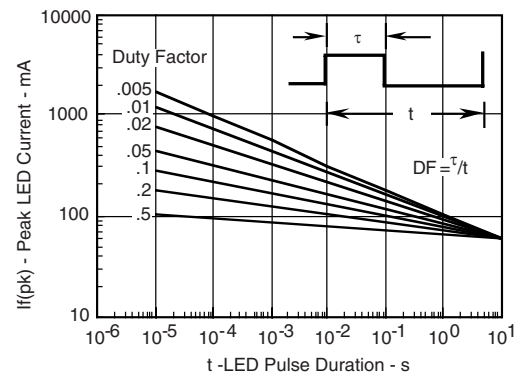


Figure 2. Peak LED Current vs. Duty Factor, Tau

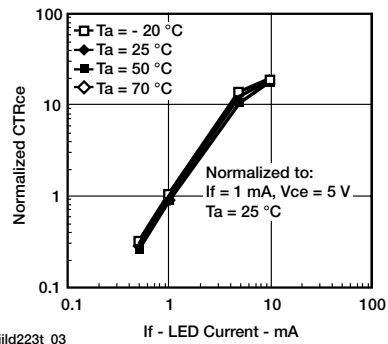


Figure 3. Normalized CTR<sub>CE</sub> vs. LED Current

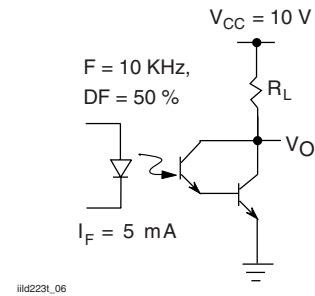


Figure 6. Switching Schematic

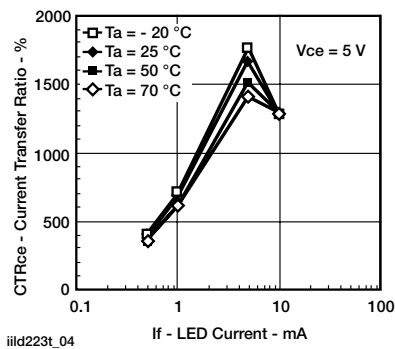


Figure 4. CTR vs. LED Current

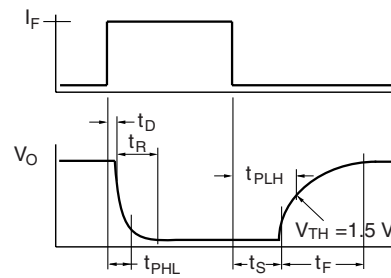


Figure 7. Switching Timing

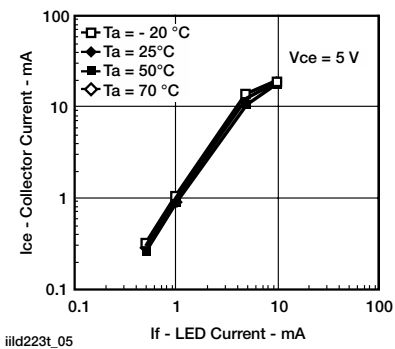
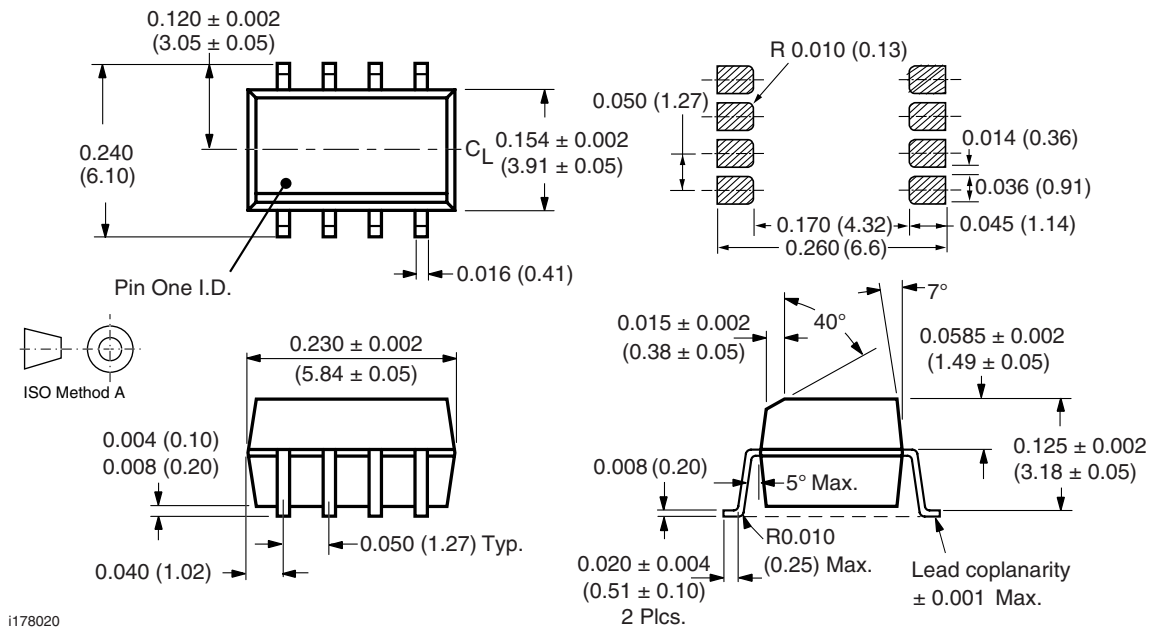


Figure 5. Collector Current vs. LED Current

**PACKAGE DIMENSIONS** in inches (millimeters)


## Vishay Semiconductors

### Ozone Depleting Substances Policy Statement

It is the policy of Vishay Semiconductor GmbH to

1. Meet all present and future national and international statutory requirements.
2. Regularly and continuously improve the performance of our products, processes, distribution and operating systems with respect to their impact on the health and safety of our employees and the public, as well as their impact on the environment.

It is particular concern to control or eliminate releases of those substances into the atmosphere which are known as ozone depleting substances (ODSs).

The Montreal Protocol (1987) and its London Amendments (1990) intend to severely restrict the use of ODSs and forbid their use within the next ten years. Various national and international initiatives are pressing for an earlier ban on these substances.

Vishay Semiconductor GmbH has been able to use its policy of continuous improvements to eliminate the use of ODSs listed in the following documents.

1. Annex A, B and list of transitional substances of the Montreal Protocol and the London Amendments respectively
2. Class I and II ozone depleting substances in the Clean Air Act Amendments of 1990 by the Environmental Protection Agency (EPA) in the USA
3. Council Decision 88/540/EEC and 91/690/EEC Annex A, B and C (transitional substances) respectively.

Vishay Semiconductor GmbH can certify that our semiconductors are not manufactured with ozone depleting substances and do not contain such substances.

We reserve the right to make changes to improve technical design  
and may do so without further notice.

Parameters can vary in different applications. All operating parameters must be validated for each customer application by the customer. Should the buyer use Vishay Semiconductors products for any unintended or unauthorized application, the buyer shall indemnify Vishay Semiconductors against all claims, costs, damages, and expenses, arising out of, directly or indirectly, any claim of personal damage, injury or death associated with such unintended or unauthorized use.

Vishay Semiconductor GmbH, P.O.B. 3535, D-74025 Heilbronn, Germany



### Notice

Specifications of the products displayed herein are subject to change without notice. Vishay Intertechnology, Inc., or anyone on its behalf, assumes no responsibility or liability for any errors or inaccuracies.

Information contained herein is intended to provide a product description only. No license, express or implied, by estoppel or otherwise, to any intellectual property rights is granted by this document. Except as provided in Vishay's terms and conditions of sale for such products, Vishay assumes no liability whatsoever, and disclaims any express or implied warranty, relating to sale and/or use of Vishay products including liability or warranties relating to fitness for a particular purpose, merchantability, or infringement of any patent, copyright, or other intellectual property right.

The products shown herein are not designed for use in medical, life-saving, or life-sustaining applications. Customers using or selling these products for use in such applications do so at their own risk and agree to fully indemnify Vishay for any damages resulting from such improper use or sale.