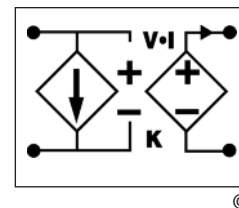




VTM® Chip Transformer

- Isolated 1-50 Vout
- High density
- Small footprint
- ZVS / ZCS Sine Amplitude Converter™
- 3 MHz effective switching frequency
- Surface-mount package
- Low weight
- -55°C to 125°C operation
- 1 μs transient response
- 4.5 million hours MTBF
- Up to 96.5% efficiency



Product Description

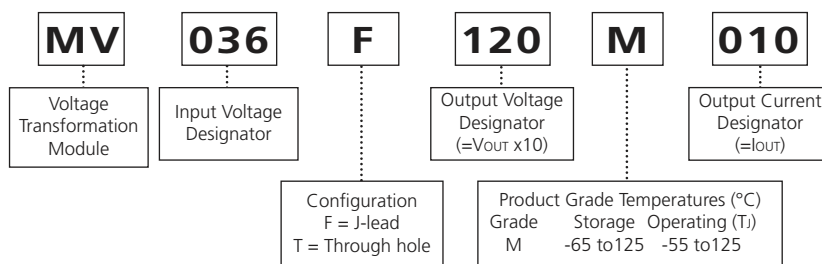
The VTM® transformer is a VI Chip® product that provides extremely fast, efficient, and quiet fixed ratio voltage division (or current multiplication). With twelve voltage division ratios from 1:1 to 1:32, the isolated VTM provides the user with the flexibility to supply up to 100 A or 120 W at any output voltage from 1 to 50 Vdc in a surface mount package occupying ~1 square inch.

The MIL-COTS VTM®s are optimized for use with the MIL-COTS PRM® Regulator to implement a Factorized Power Architecture™ (FPA™). Together, the PRM + VTM chip set provides the full functionality of a DC-DC converter, but with breakthrough performance and flexibility in a rugged, miniature package. The companion PRM for the MV036 family of VTMs is the 28 Vdc input MP028F036M12AL, which operates from an input range of 16-50 Vdc (the data sheet is also available). The VTM can be used as a standalone POL product.

By factorizing the DC-DC power conversion into its essential elements – the VTM’s isolation and transformation, and the PRM’s output voltage control and regulation – and arranging those functions in a sequence that maximizes system performance, FPA offers a fundamentally new and significantly improved approach to power conversion.

The VTM’s fast dynamic response and low noise eliminate the need for bulk capacitance at the load, substantially increasing the POL density while improving reliability and decreasing cost. The low profile VTM (0.265 inches, 6,73 mm) is available with J-leads for surface mount or pins for through hole applications.

Part Numbering Format



Product Status

Part Number	Product Status	Replaced by
MV036F011M100	EOL	none
MV036F015M080	NRND	MVTM36Bx015M080A00
MV036F022M055	NRND	MVTM36Bx022M055A00
MV036F030M040	NRND	MVTM36Bx030M040A00
MV036F045M027	NRND	MVTM36Bx045M027A00
MV036F060M020	NRND	MVTM36Bx060M020A00
MV036F072M017	NRND	MVTM36Bx072M017A00
MV036F090M013	NRND	MVTM36Bx090M013A00
MV036F120M010	NRND	MVTM36Bx120M010A00
MV036F180M007	NRND	MVTM36Bx180M007A00
MV036F240M005	NRND	MVTM36Bx240M005A00
MV036F360M003	NRND	MVTM36Bx360M003A00

NRND = Not Recommended for New Designs

Absolute Maximum Ratings

Parameter	Values	Unit	Notes
+In to -In	-1.0 to 60	Vdc	
	100	Vdc	For 100 ms
PC to -In	-0.3 to 7.0	Vdc	
VC to -In	-0.3 to 19.0	Vdc	
+Out to -Out	Model specific	Vdc	Contact factory
Isolation voltage	2,250	Vdc	Input to Output
Output current	Model specific	A	See Table 1
Peak output current	1.5 • Iout	A	For 1 ms
Output power	120	W	
Peak output power	180	W	For 1 ms
Case temperature	225	°C	MSL 5
	245	°C	MSL 6
Operating junction temperature ^[a]	-55 to 125	°C	M - Grade
Storage temperature	-65 to 125	°C	M - Grade

Note:

[a] The referenced junction is defined as the semiconductor having the highest temperature. This temperature is monitored by a shutdown comparator.

Electrical Specifications

Input Specs (Conditions are at 36 Vin, full load, and 25°C ambient unless otherwise specified)

Parameter	Min	Typ	Max	Unit	Note
Input voltage range	See table 1	36	50	Vdc	
Input dV/dt			1	V/μs	
Input overvoltage turn-on	50.5	54.4		Vdc	
Input overvoltage turn-off		55.5	57.5	Vdc	
Input current			3.5	Adc	Continuous
No load power dissipation	1.5	4.0	7.8	W	Low line to high line

Output Specs (Conditions are at 36 Vin, full load, and 25°C ambient unless otherwise specified)

Parameter	Min	Typ	Max	Unit	Note
Output voltage	See Table 1			Vdc	No load
	$K \cdot V_{IN} - I_o \cdot R_{OUT\ NOM}$			Vdc	Full load
Rated DC current	0		100	Adc	26 - 50 VIN See Table 1
Peak repetitive current			150%	IMAX (A)	Max pulse width 1ms, max duty cycle 10%, baseline power 50%
DC current limit		160%		INOM (A)	Module will shut down when current limit is reached or exceeded
Current share accuracy		5	10	%	
Efficiency					See Table 2, Page 3
Load capacitance					See Table 2 when used with PRM
Output overvoltage setpoint		110%	115%	VOUT MAX	
Output ripple voltage (typ)					
No external bypass	50		250	mV	See Figures 2 and 5
10 μF bypass capacitor	2		20	mV	See Figure 6
Effective switching frequency	2.5	3.0	3.6	MHz	Model dependent
Line regulation	0.99K	K	1.01K		VOUT = K • VIN at no load, See Table 1
Load regulation	ROUTMIN		ROUTMAX	mΩ	See Table 1
Transient response					
Response time		200		ns	See Figures 7 and 8
Recovery time		1		μs	See Figures 7 and 8

Electrical Specifications (continued)

MIL-COTS VTM® Family Part Numbers and Ranges

Part Number	K-Factor	Rated Output Current (A)	No Load Output Voltage (Vdc)		Rout (mΩ)		
			@26 Vin	@ 50 Vin	Min	Nom	Max
MV036F011M100	1/32	100	0.82	1.55	0.5	0.9	1.3
MV036F015M080	1/24	80	1.1	2.0	1.0	1.3	1.5
MV036F022M055	1/16	55	1.63	3.1	1.4	1.75	2.0
MV036F030M040	1/12	40	2.2	4.1	1.45	2.8	3.6
MV036F045M027	1/8	27	3.3	6.2	3.5	6.0	7.1
MV036F060M020	1/6	20	4.3	8.3	5.0	8.0	10
MV036F072M017*	1/5	16.6	6.4*	10	6.0	9.6	12
MV036F090M013	1/4	13.3	6.5	12.5	6.9	11.5	13.9
MV036F120M010	1/3	10.0	8.7	16.6	25	31	40
MV036F180M007	1/2	6.7	14**	25	27.5	43.6	60.0
MV036F240M005	2/3	5.0	17.4	33	49.3	79.0	98.0
MV036F360M003	1	3.3	26	50	140	188	210

Table 1 — VTM part numbers

* Low line input voltage 32 V

**Low line input voltage 28 V

Part Number	Typical Full Load Efficiency at nom Vout (%)	Typical Half Load Efficiency at nom Vout (%)	Maximum Load Capacitance (µF)
MV036F011M100	89.2	89.3	48128
MV036F015M080	91.9	92.3	27072
MV036F022M055	94	94.5	12032
MV036F030M040	94	94.8	6768
MV036F045M027	94.6	95.6	3008
MV036F060M020	95.3	96.0	1692
MV036F072M017	96.2	96.2	1175
MV036F090M013	96.2	95.5	752
MV036F120M010	94.8	94.9	423
MV036F180M007	95.8	95.2	188
MV036F240M005	95.0	94.8	106
MV036F360M003	96	96	47

Table 2 — Typical efficiency and maximum load capacitance, by part number

Control Pin Functions

VC – VTM Control

The VC port is multiplexed. It receives the initial V_{CC} voltage from an upstream PRM®, synchronizing the output rise of the VTM® with the output rise of the PRM. Additionally, the VC port provides feedback to the PRM to compensate for the VTM output resistance. In typical applications using VTMs powered from PRMs, the PRM’s VC port should be connected to the VTM VC port.

The VC port is not intended to be used to supply V_{CC} voltage to the VTM for extended periods of time. If VC is being supplied from a source other than the PRM, the voltage should be removed after 20 ms.

PC – Primary Control

The Primary Control (PC) port is a multifunction port for controlling the VTM as follows:

Disable – If PC is left floating, the VTM output is enabled. To disable the output, the PC port must be pulled lower than 2.4 V, referenced to -In. Optocouplers, open collector transistors or relays can be used to control the PC port. Once disabled, 14 V must be re-applied to the VC port to restart the VTM.

Primary Auxiliary Supply – The PC port can source up to 2.4 mA at 5 Vdc.

Electrical Specifications (continued)

Waveforms

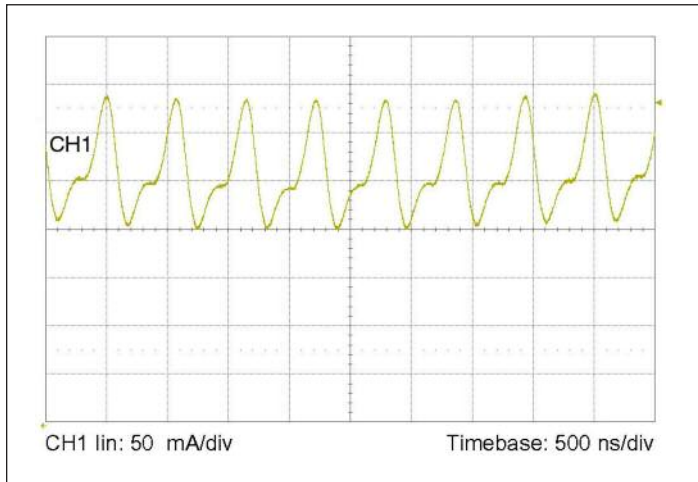


Figure 1 — Representative input reflected ripple current at full load (MV036F120M010).

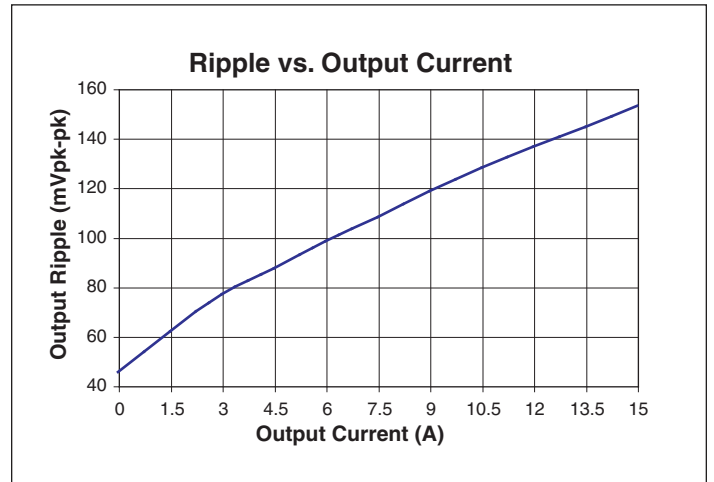


Figure 2 — Sample output voltage ripple vs. output current with no POL bypass capacitance (MV036F120M010).

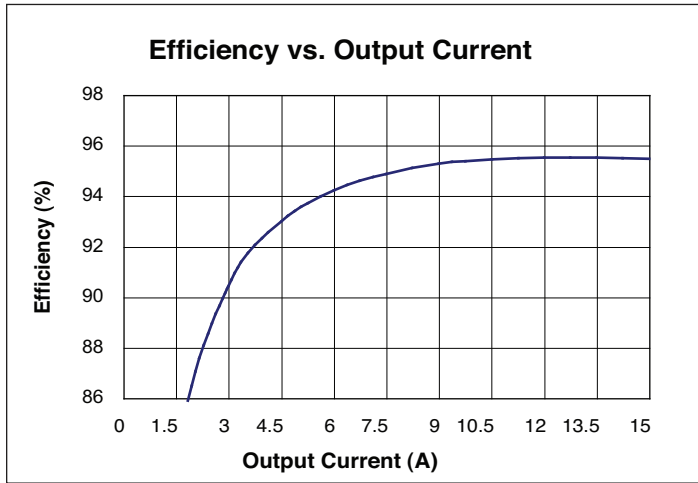


Figure 3 — Representative efficiency vs. output current (MV036F120M010).

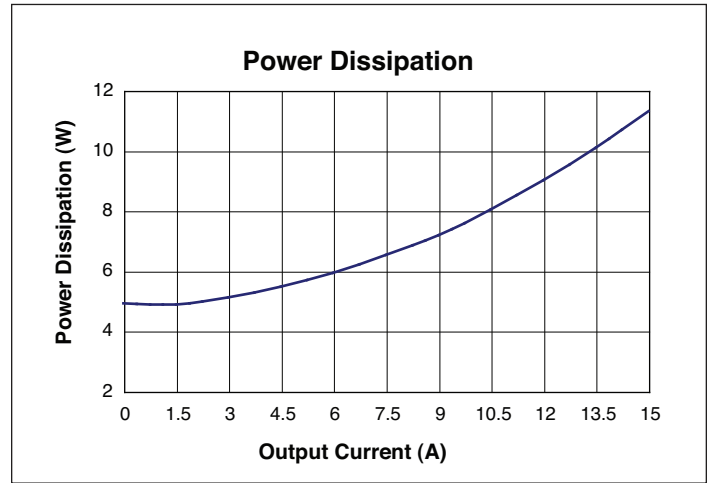


Figure 4 — Example power dissipation vs. output current (MV036F120M010).

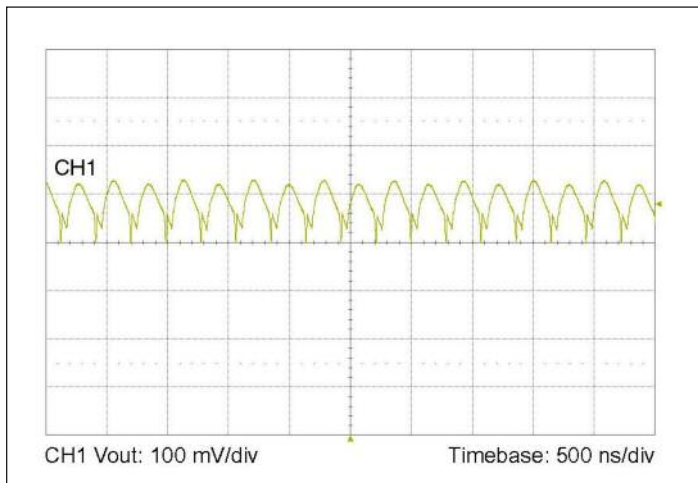


Figure 5 — Sample output voltage ripple at full load; with no POL bypass capacitance (MV036F120M010).

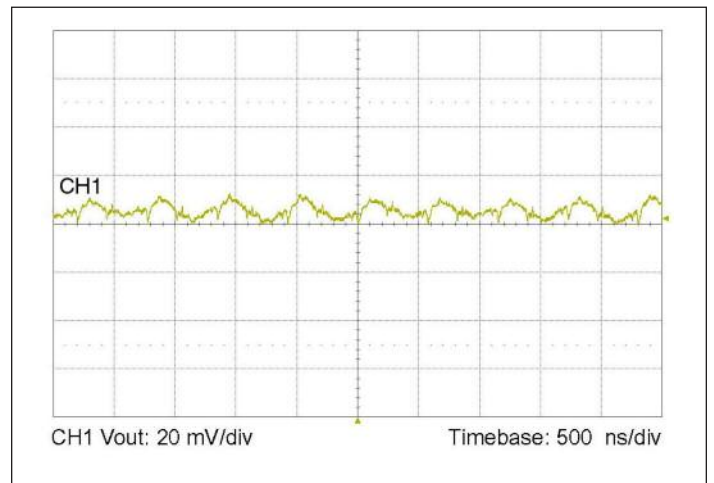


Figure 6 — Sample output voltage ripple at full load with 4.7 μ F ceramic POL bypass capacitance and 20 nH distribution inductance (MV036F120M010).

Electrical Specifications (continued)

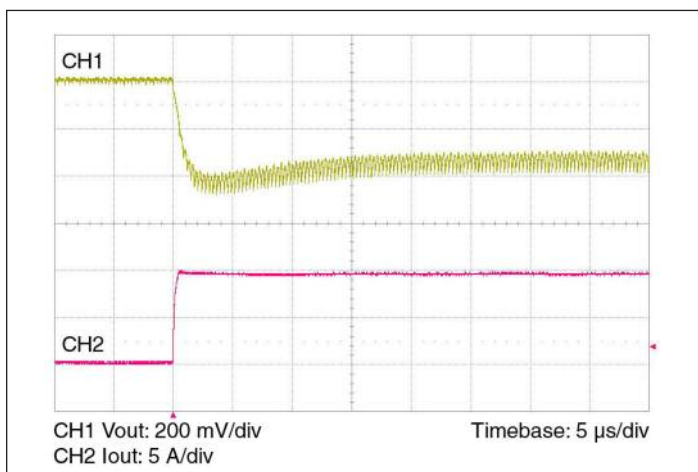


Figure 7 — Example load step with 100 μF input capacitance and no output capacitance (MV036F120M010).

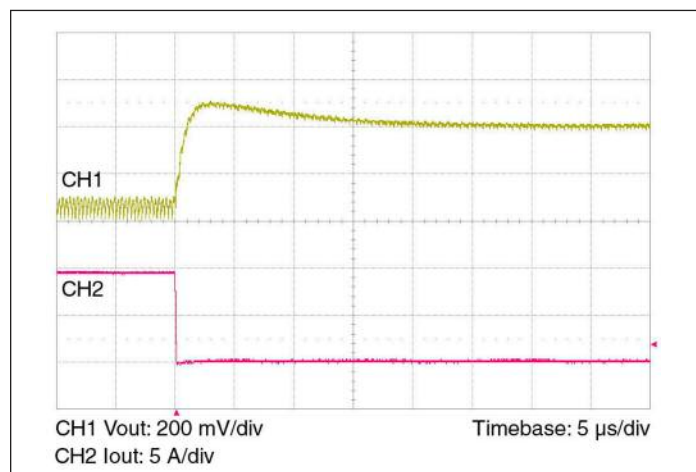


Figure 8 — Example load step with 100 μF input capacitance and no output capacitance (MV036F120M010).

General

Parameter	Min	Typ	Max	Unit	Note
MTBF (MV036F030M040) MIL-HDBK-217F		4,480,000 806,000 631,000		Hours	25°C, GB 50°C NS 65°C AIC
Isolation specifications					
Voltage	2,250			Vdc	Input to Output
Capacitance		3000		pF	Input to Output
Resistance	10			MΩ	Input to Output
Agency approvals		cTUVus			UL/CSA 60950-1, EN 60950-1
					CE Marked for Low Voltage Directive and RoHS Recast Directive, as applicable
Mechanical					
Weight		0.53/15		oz /g	See Mechanical Drawings, Figures 10 & 11
Dimensions					
Length		1.28/32,5		in /mm	
Width		0.87 /22		in /mm	
Height		0.265/6,73		in /mm	
Thermal					
Over temperature shutdown	125	130	135	°C	Junction temperature
Thermal capacity		9.3		Ws/°C	
Junction-to-case thermal impedance (Rθjc)		1.1		°C /W	
Junction-to-ambient		5.0		°C /W	With 0.25" heat sink*

Auxiliary Pins (Conditions are at 36 Vin, full load, and 25°C ambient unless otherwise specified)

Parameter	Min	Typ	Max	Unit	Note
Primary Control (PC)					
DC voltage	4.8	5.0	5.2	Vdc	
Module disable voltage	2.4	2.5		Vdc	
Module enable voltage		2.5	2.6	Vdc	VC voltage must be applied when module is enabled using PC
Current limit	2.4	2.5	2.9	mA	Source only
Disable delay time		6		μs	PC low to Vout low
VTM® Control (VC)					
External boost voltage	12	14	19	Vdc	Required for VTM start up without PRM
External boost duration		10		ms	Maximum duration of VC pulse = 20 ms

+In / -In DC Voltage Ports

The VTM® input should be connected to the PRM® output terminals. Given that both the PRM and VTM have high switching frequencies, it is often good practice to use a series inductor to limit high frequency currents between the PRM output and VTM input capacitors. The input voltage should not exceed the maximum specified. If the input voltage exceeds the overvoltage turn-off, the VTM will shutdown. The VTM does not have internal input reverse polarity protection. Adding a properly sized diode in series with the positive input or a fused reverse-shunt diode will provide reverse polarity protection.

TM – For Factory Use Only

VC – VTM Control

The VC port is multiplexed. It receives the initial V_{CC} voltage from an upstream PRM, synchronizing the output rise of the VTM with the output rise of the PRM. Additionally, the VC port provides feedback to the PRM to compensate for the VTM output resistance. In typical applications using VTMs powered from PRMs, the PRM's VC port should be connected to the VTM VC port.

The VC port is not intended to be used to supply V_{CC} voltage to the VTM for extended periods of time. If VC is being supplied from a source other than the PRM, the voltage should be removed after 20 ms.

PC – Primary Control

The Primary Control (PC) port is a multifunction port for controlling the VTM as follows:

Disable – If PC is left floating, the VTM output is enabled. To disable the output, the PC port must be pulled lower than 2.4 V, referenced to -In. Optocouplers, open collector transistors or relays can be used to control the PC port. Once disabled, 14 V must be re-applied to the VC port to restart the VTM.

Primary Auxiliary Supply – The PC port can source up to 2.4 mA at 5 Vdc.

+Out / -Out DC Voltage Output Ports

The output and output return are through two sets of contact locations. The respective +Out and -Out groups must be connected in parallel with as low an interconnect resistance as possible.

To take full advantage of the VTM, the user should note the low output impedance of the device. The low output impedance provides fast transient response without the need for bulk POL capacitance. Limited-life electrolytic capacitors required with conventional converters can be reduced or even eliminated, saving cost and valuable board real estate.

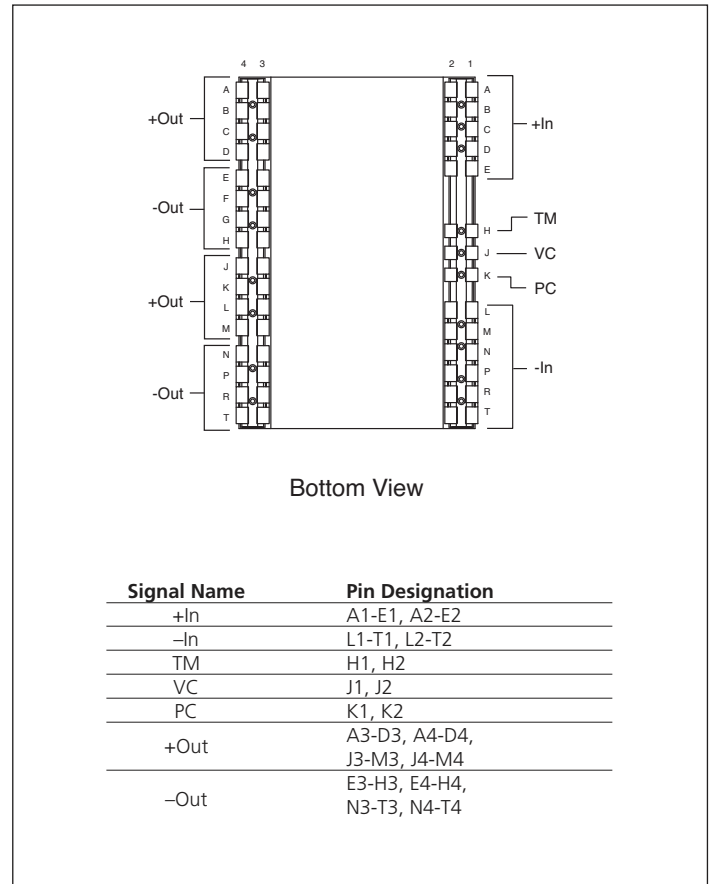


Figure 9 — VTM pin configuration

Mechanical Drawings

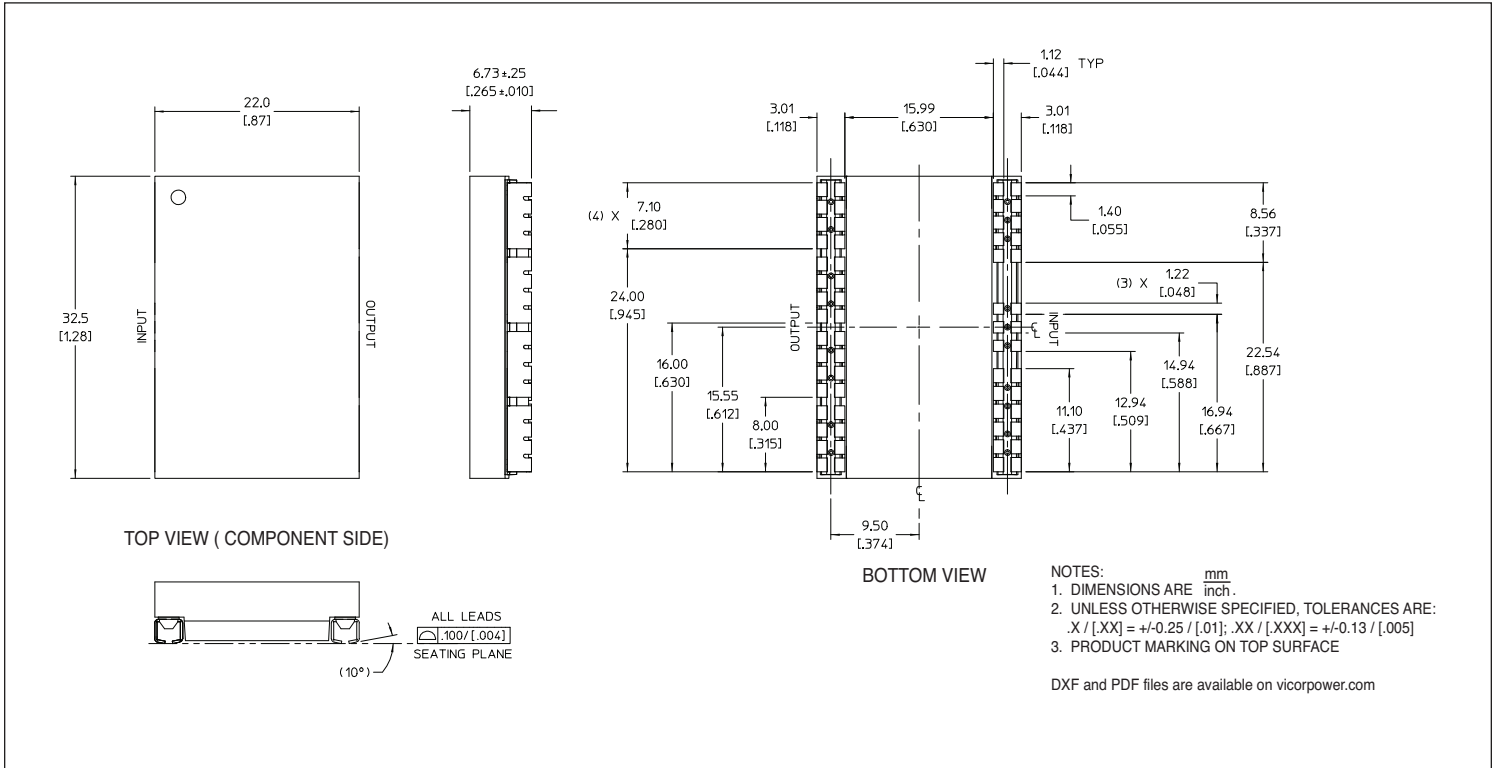


Figure 10 — VTM® mechanical outline

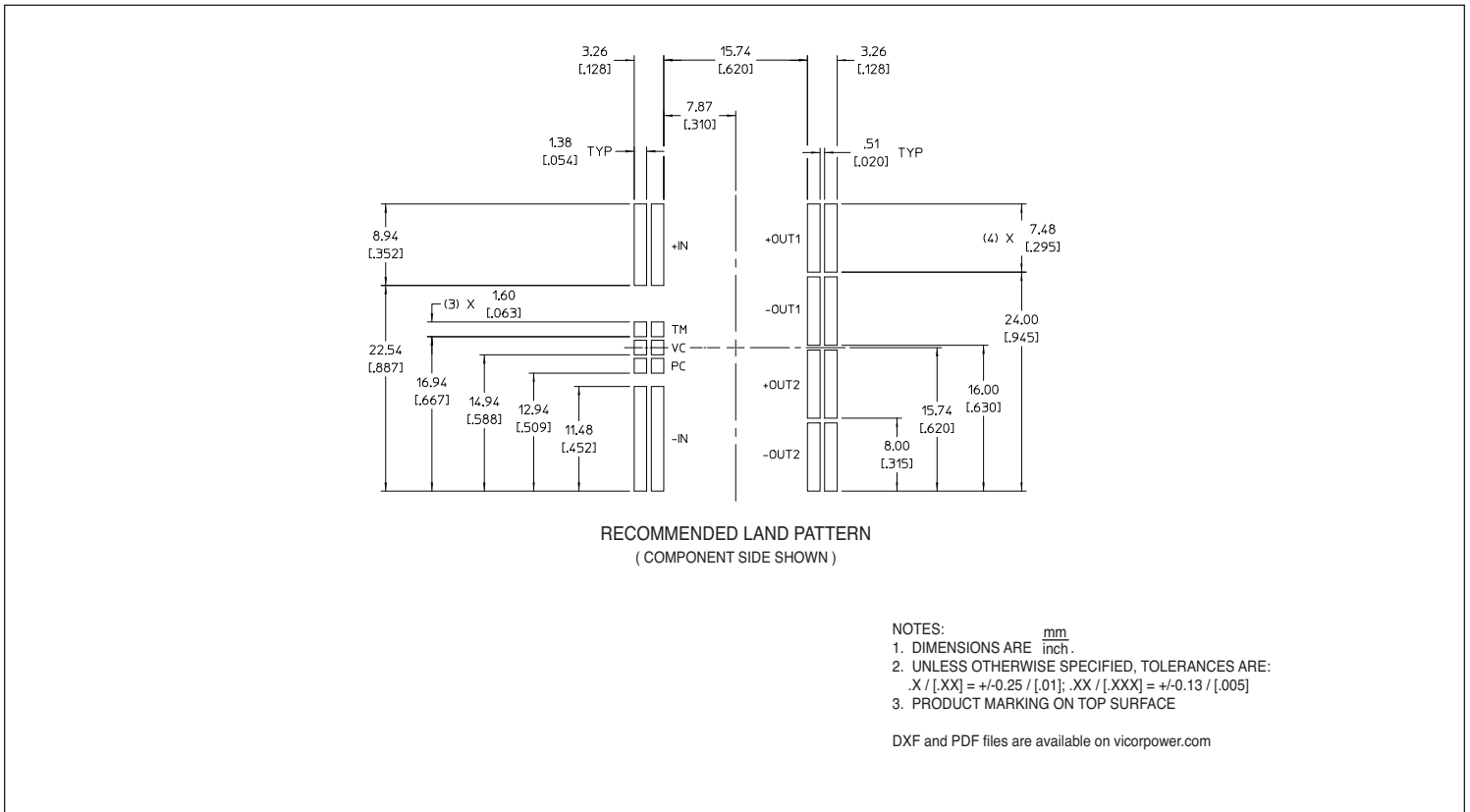


Figure 11 — VTM PCB land layout information

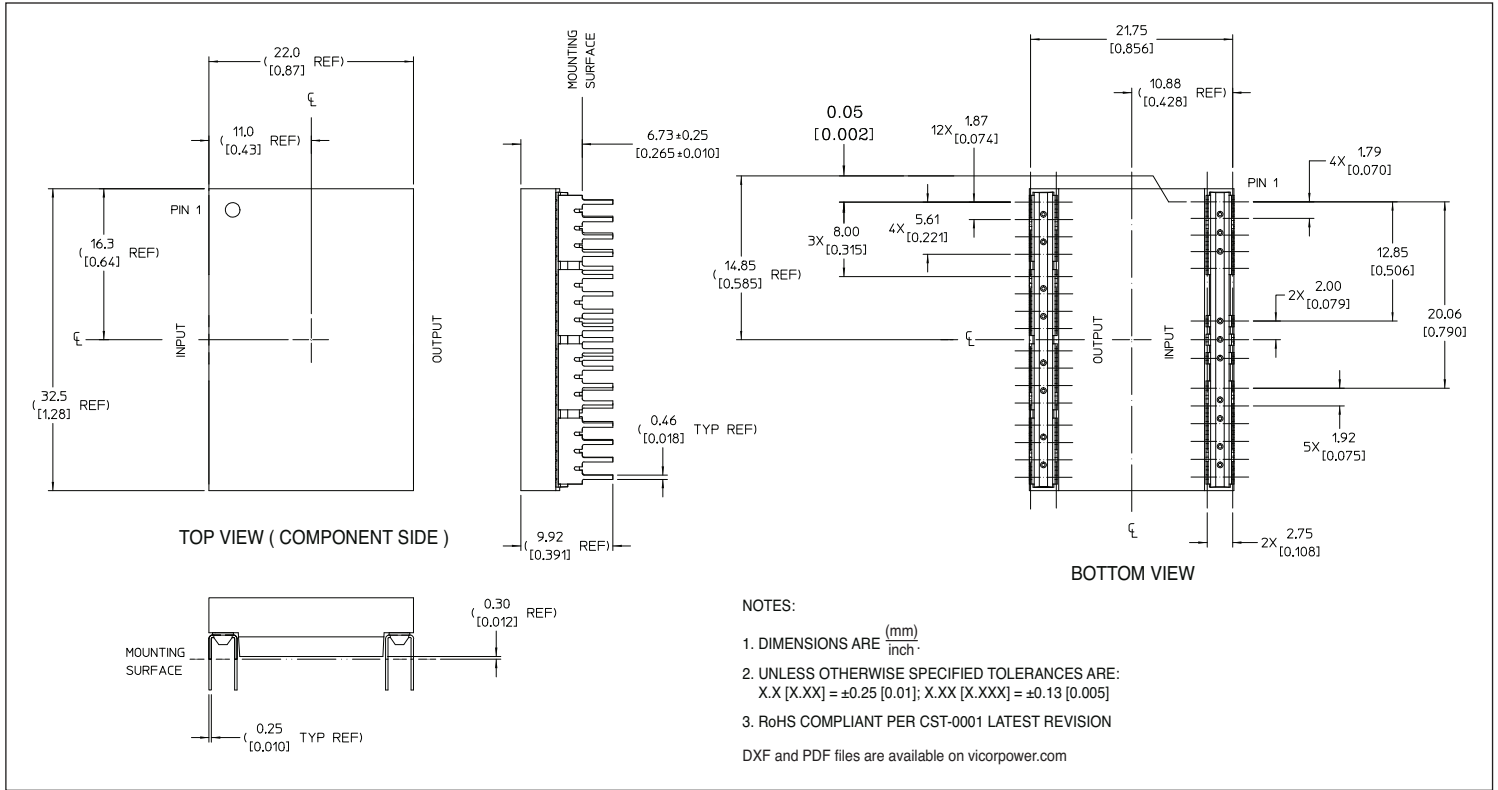


Figure 12 — VTM[®] through-hole mechanical outline

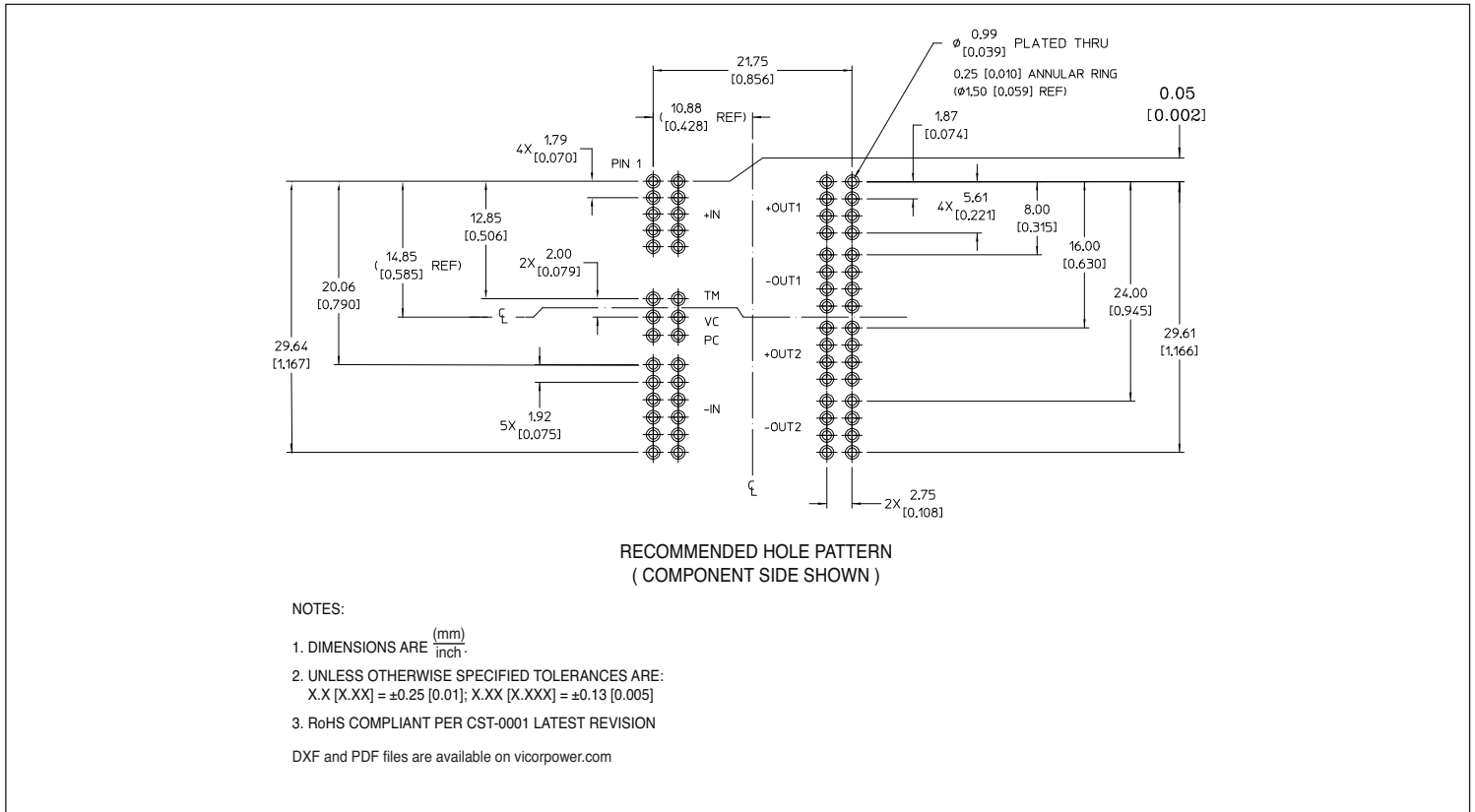


Figure 13 — VTM through-hole PCB layout information

Configuration Options

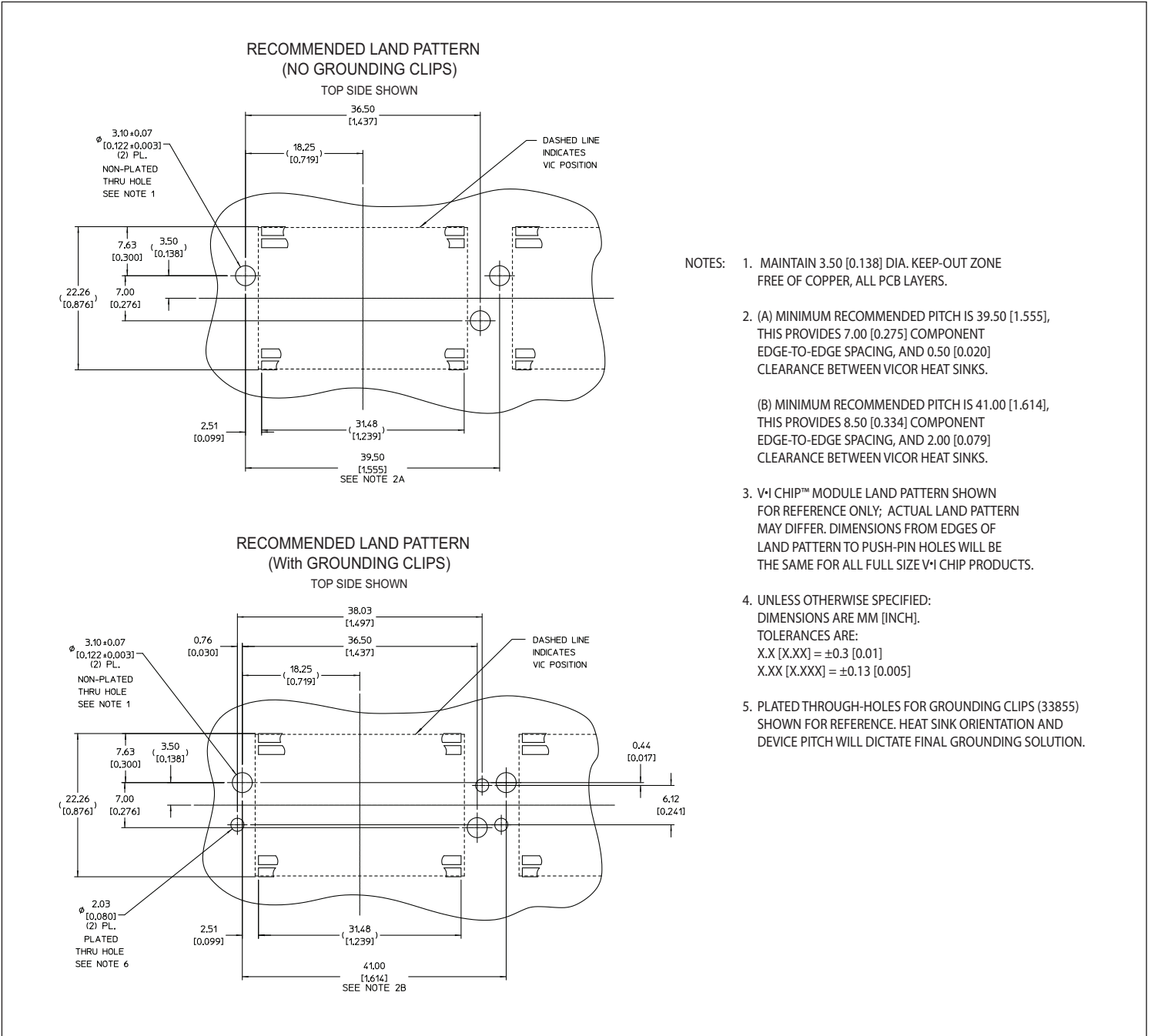


Figure 14 — Hole location for push pin heat sink relative to VI Chip®

Vicor's comprehensive line of power solutions includes high density AC-DC and DC-DC modules and accessory components, fully configurable AC-DC and DC-DC power supplies, and complete custom power systems.

Information furnished by Vicor is believed to be accurate and reliable. However, no responsibility is assumed by Vicor for its use. Vicor makes no representations or warranties with respect to the accuracy or completeness of the contents of this publication. Vicor reserves the right to make changes to any products, specifications, and product descriptions at any time without notice. Information published by Vicor has been checked and is believed to be accurate at the time it was printed; however, Vicor assumes no responsibility for inaccuracies. Testing and other quality controls are used to the extent Vicor deems necessary to support Vicor's product warranty. Except where mandated by government requirements, testing of all parameters of each product is not necessarily performed.

Specifications are subject to change without notice.

Vicor's Standard Terms and Conditions

All sales are subject to Vicor's Standard Terms and Conditions of Sale, which are available on Vicor's webpage or upon request.

Product Warranty

In Vicor's standard terms and conditions of sale, Vicor warrants that its products are free from non-conformity to its Standard Specifications (the "Express Limited Warranty"). This warranty is extended only to the original Buyer for the period expiring two (2) years after the date of shipment and is not transferable.

UNLESS OTHERWISE EXPRESSLY STATED IN A WRITTEN SALES AGREEMENT SIGNED BY A DULY AUTHORIZED VICOR SIGNATORY, VICOR DISCLAIMS ALL REPRESENTATIONS, LIABILITIES, AND WARRANTIES OF ANY KIND (WHETHER ARISING BY IMPLICATION OR BY OPERATION OF LAW) WITH RESPECT TO THE PRODUCTS, INCLUDING, WITHOUT LIMITATION, ANY WARRANTIES OR REPRESENTATIONS AS TO MERCHANTABILITY, FITNESS FOR PARTICULAR PURPOSE, INFRINGEMENT OF ANY PATENT, COPYRIGHT, OR OTHER INTELLECTUAL PROPERTY RIGHT, OR ANY OTHER MATTER.

This warranty does not extend to products subjected to misuse, accident, or improper application, maintenance, or storage. Vicor shall not be liable for collateral or consequential damage. Vicor disclaims any and all liability arising out of the application or use of any product or circuit and assumes no liability for applications assistance or buyer product design. Buyers are responsible for their products and applications using Vicor products and components. Prior to using or distributing any products that include Vicor components, buyers should provide adequate design, testing and operating safeguards.

Vicor will repair or replace defective products in accordance with its own best judgment. For service under this warranty, the buyer must contact Vicor to obtain a Return Material Authorization (RMA) number and shipping instructions. Products returned without prior authorization will be returned to the buyer. The buyer will pay all charges incurred in returning the product to the factory. Vicor will pay all reshipment charges if the product was defective within the terms of this warranty.

Life Support Policy

VICOR'S PRODUCTS ARE NOT AUTHORIZED FOR USE AS CRITICAL COMPONENTS IN LIFE SUPPORT DEVICES OR SYSTEMS WITHOUT THE EXPRESS PRIOR WRITTEN APPROVAL OF THE CHIEF EXECUTIVE OFFICER AND GENERAL COUNSEL OF VICOR CORPORATION. As used herein, life support devices or systems are devices which (a) are intended for surgical implant into the body, or (b) support or sustain life and whose failure to perform when properly used in accordance with instructions for use provided in the labeling can be reasonably expected to result in a significant injury to the user. A critical component is any component in a life support device or system whose failure to perform can be reasonably expected to cause the failure of the life support device or system or to affect its safety or effectiveness. Per Vicor Terms and Conditions of Sale, the user of Vicor products and components in life support applications assumes all risks of such use and indemnifies Vicor against all liability and damages.

Intellectual Property Notice

Vicor and its subsidiaries own Intellectual Property (including issued U.S. and Foreign Patents and pending patent applications) relating to the products described in this data sheet. No license, whether express, implied, or arising by estoppel or otherwise, to any intellectual property rights is granted by this document. Interested parties should contact Vicor's Intellectual Property Department.

The products described on this data sheet are protected by the following U.S. Patents Numbers:

5,945,130; 6,403,009; 6,710,257; 6,911,848; 6,930,893; 6,934,166; 6,940,013; 6,969,909; 7,038,917; 7,145,186; 7,166,898; 7,187,263; D496,906; D505,114; D506,438; D509,472; and for use under 6,975,098 and 6,984,965.

Vicor Corporation

25 Frontage Road
Andover, MA, USA 01810
Tel: 800-735-6200
Fax: 978-475-6715

email

Customer Service: custserv@vicorpower.com
Technical Support: apps@vicorpower.com