

LOC	DIST	REVISIONS				
		P	LTR	DESCRIPTION	DATE	DWN APVD
AD	00	R		REVISED PER ECR-12-010535	18DEC2012	M.Y A.C

D

C

B

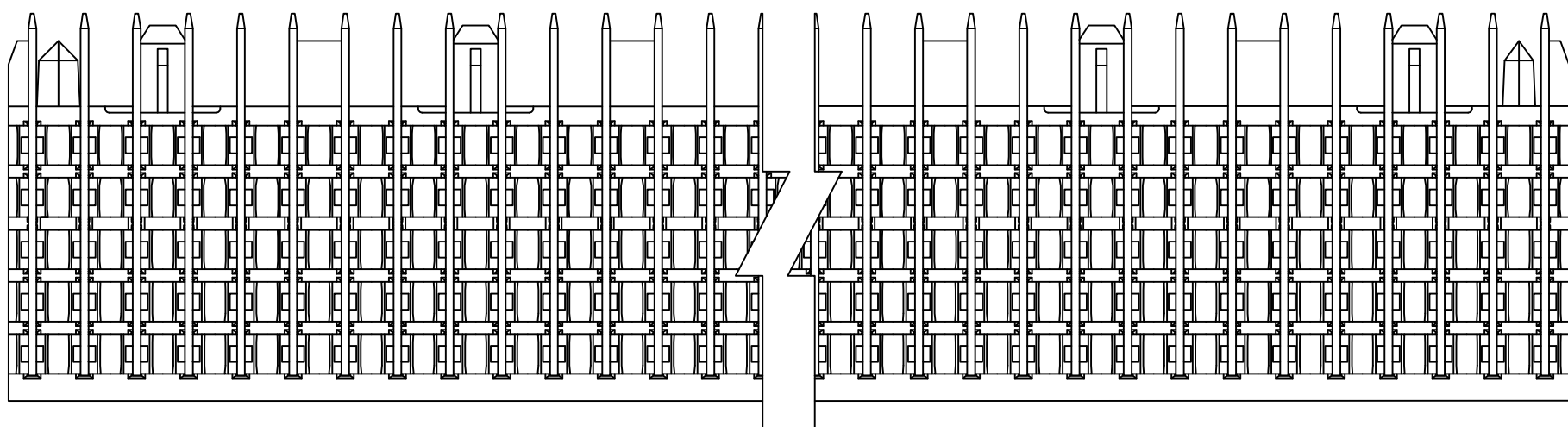
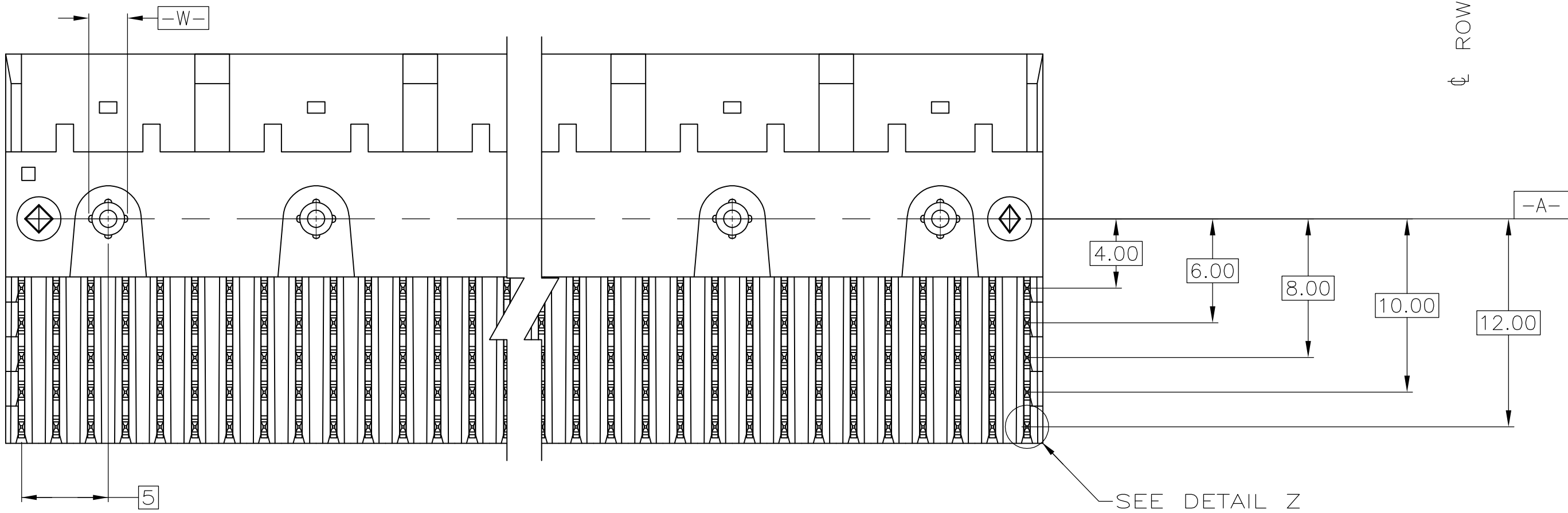
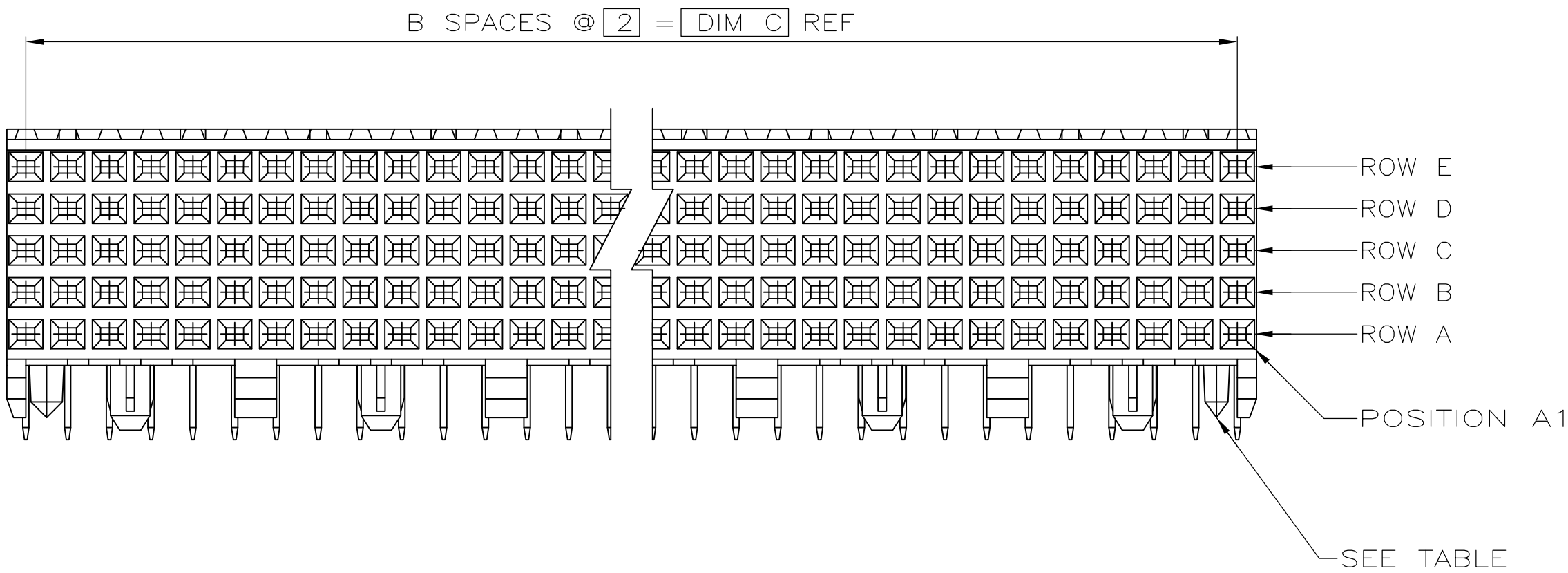
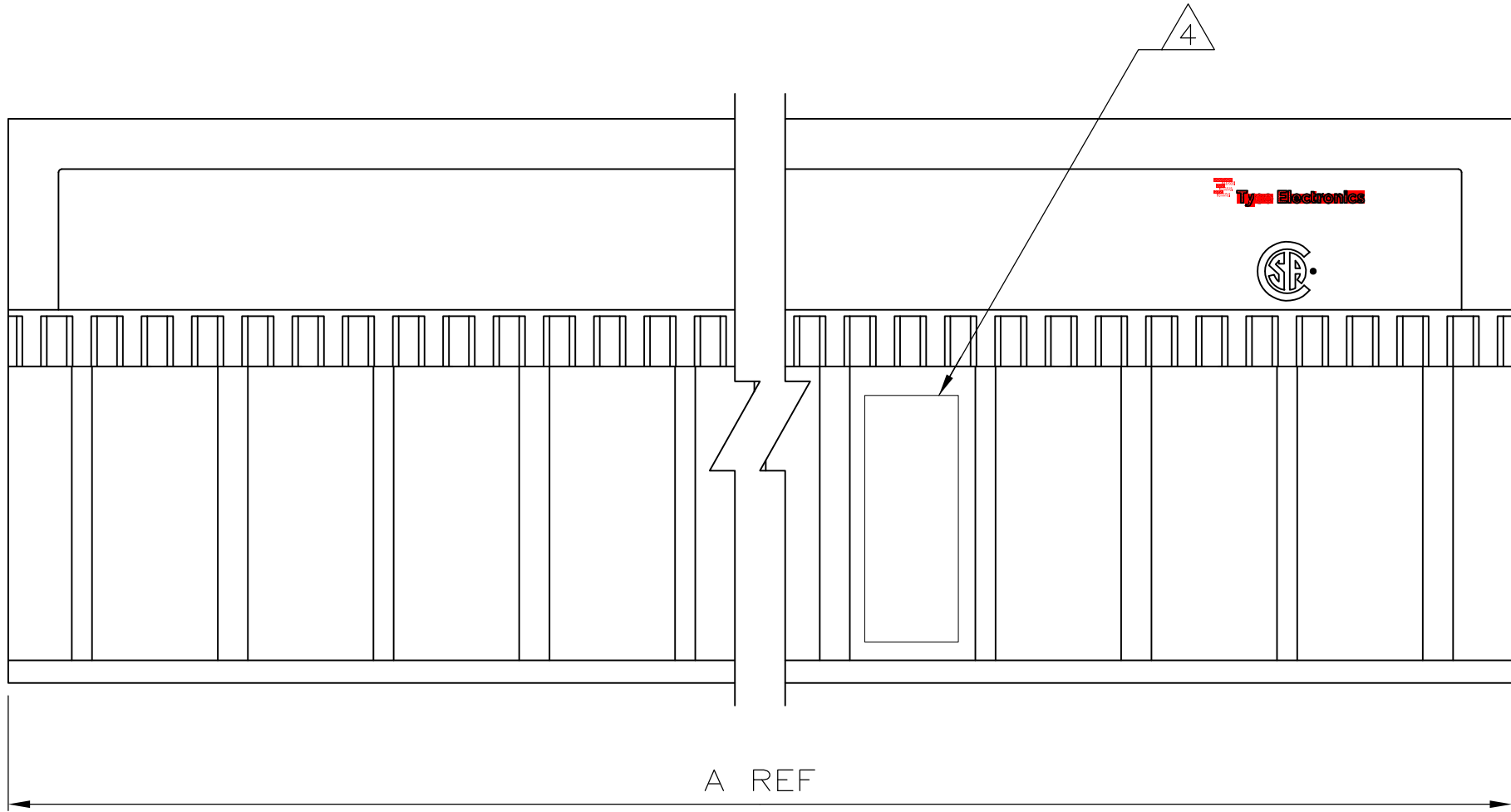
A

D

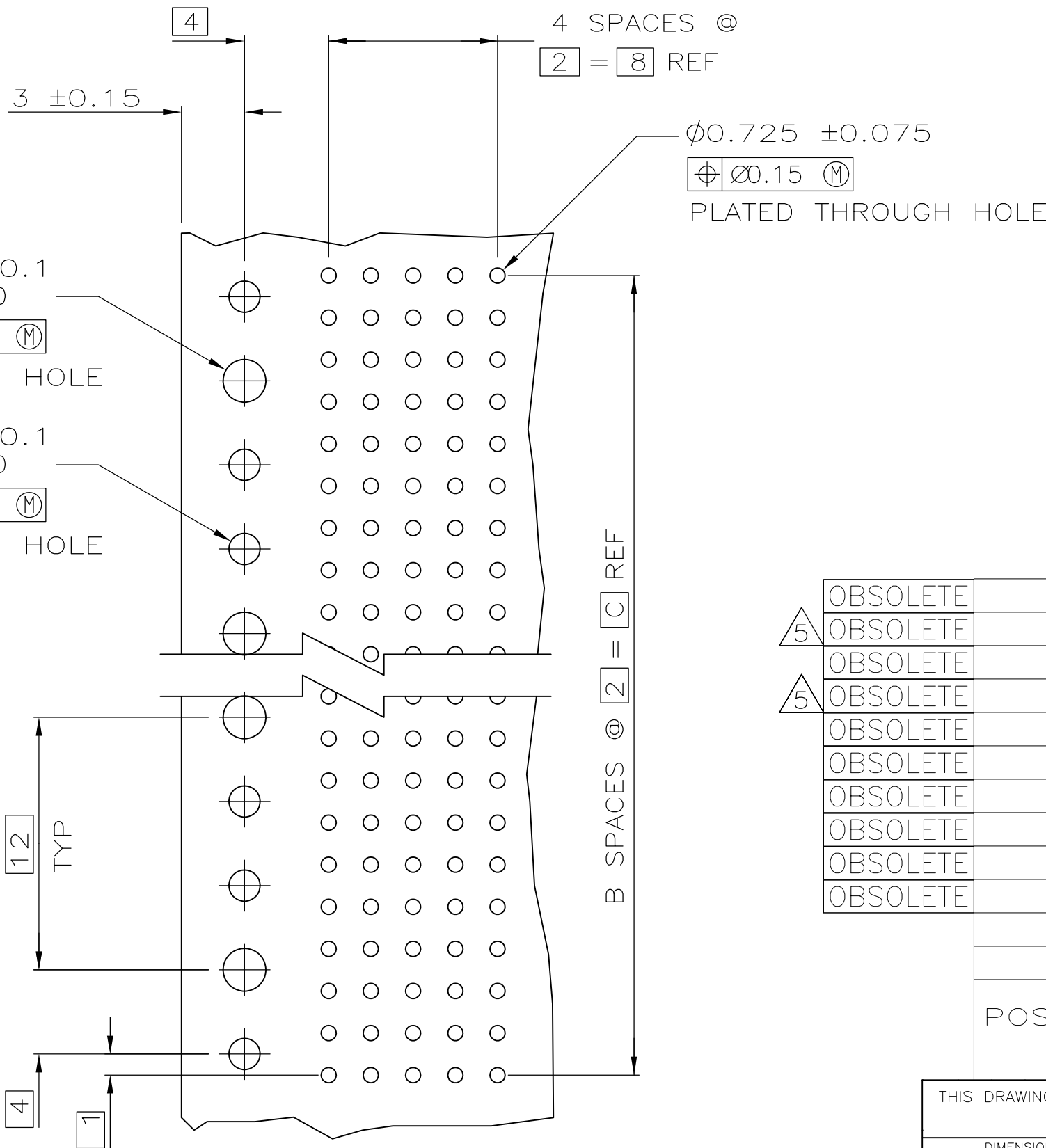
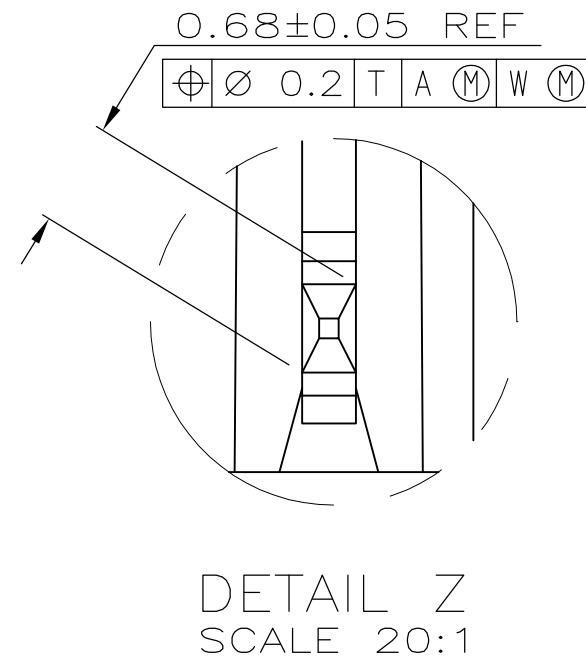
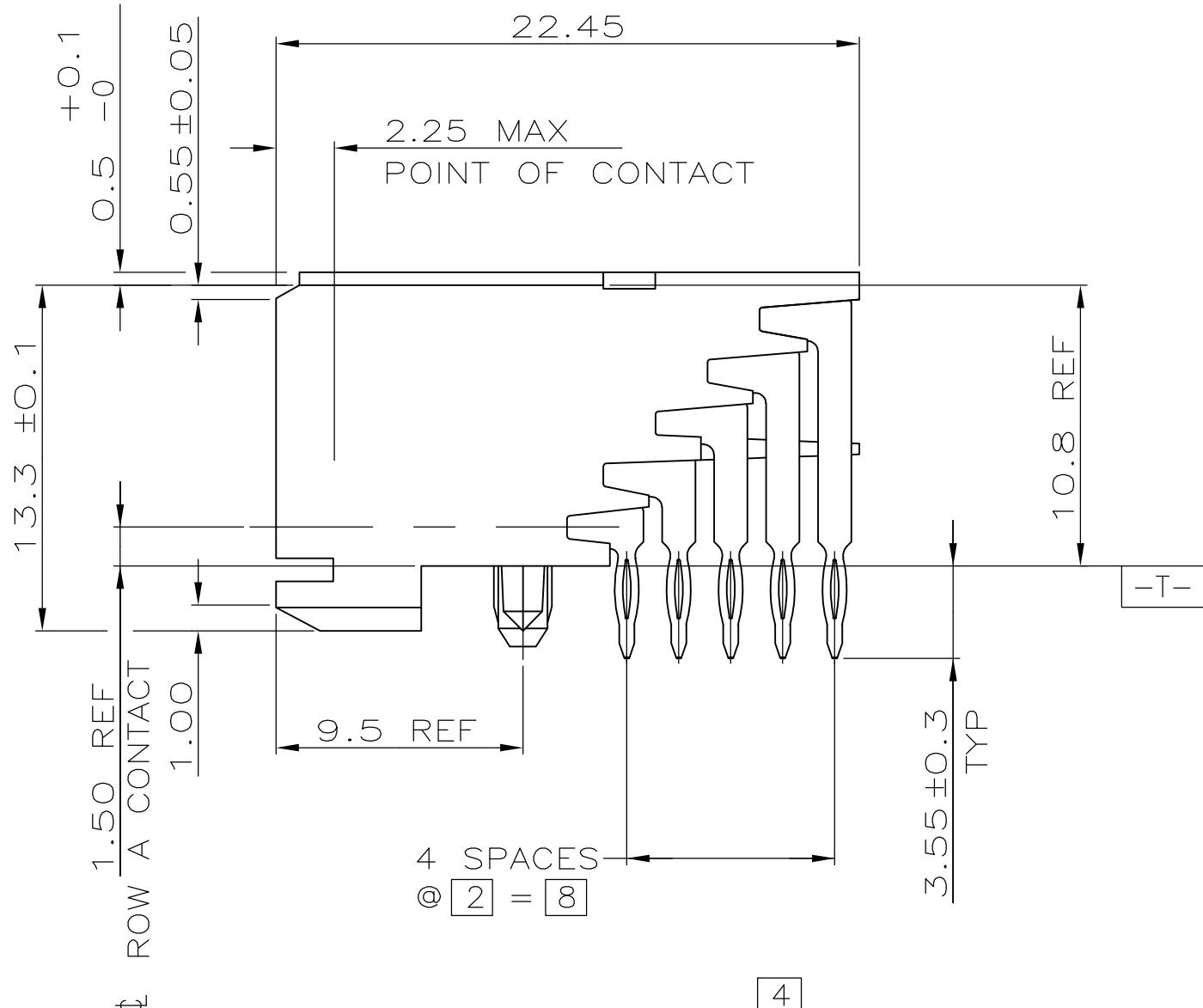
C

B

A



- 1 HOUSING MATERIAL: LIQUID CRYSTAL POLYMER
COLOR: NATURAL.
- 2 CONTACT MATERIAL: PHOSPHOR-BRONZE.
- 3 CONTACT FINISH:
UNDERPLATE (ENTIRE CONTACT):
0.00127 MIN NICKEL.
ON MATING SURFACES:
CONFORMS TO ALL TESTING SPECIFIED FOR TELCORDIA
UNCONTROLLED ENVIRONMENT.
ON LEADS
0.0006 MIN TIN-LEAD OVER UNDERPLATE.
LUBRICATION (ENTIRE CONTACT):
SURFACE CONDITIONER PER AMP SPEC 112-1002 AFTER PLATING.
- 4 PART MARKING LOCATED APPROXIMATELY AS SHOWN.
- 5 OBSOLETE PARTS: OBSOLETE CIS STREAMLINING PER D.RENAUD/D.SINISI



OBsolete	NO	214	107	215.88	3	540	1-223008-2
OBsolete	NO	130	65	131.88	3	330	1-223008-4
OBsolete	NO	118	59	119.88	3	300	1-223008-0
OBsolete	NO	106	53	107.88	3	270	223008-9
OBsolete	NO	94	47	95.88	3	240	223008-8
OBsolete	NO	82	41	83.88	3	210	223008-7
OBsolete	NO	70	35	71.88	3	180	223008-6
OBsolete	NO	58	29	59.88	3	150	223008-5
OBsolete	NO	46	23	47.88	3	120	223008-4
OBsolete	NO	34	17	35.88	3	90	223008-3
OBsolete	NO	22	11	23.88	3	60	223008-2
OBsolete	YES	10	5	11.88	3	30	223008-1
POSITIONING PEGS		C	B	A	FINISH	NO OF SIGNAL POSN	PART NUMBER

THIS DRAWING IS A CONTROLLED DOCUMENT.		DWN R. BUCHHEISTER 08/FEB/96	TE Connectivity	
DIMENSIONS: mm		CHK D. BAECHTLE 08/FEB/96	NAME	
TOLERANCES UNLESS OTHERWISE SPECIFIED:		APVD D. SINISI 08/FEB/96	PRODUCT SPEC	
0 PLC ± -		APPLICATION SPEC		SIZE
1 PLC ± -		WEIGHT		CAGE CODE
2 PLC ± 0.13		A1 00779		DRAWING NO
3 PLC ± -		C=223008		RESTRICTED TO
4 PLC ± -		CUSTOMER DRAWING		SCALE
ANGLES		4:1		SHEET
FINISH		1 of 1		REV

Mouser Electronics

Authorized Distributor

Click to View Pricing, Inventory, Delivery & Lifecycle Information:

[TE Connectivity:](#)

[223008-4](#)