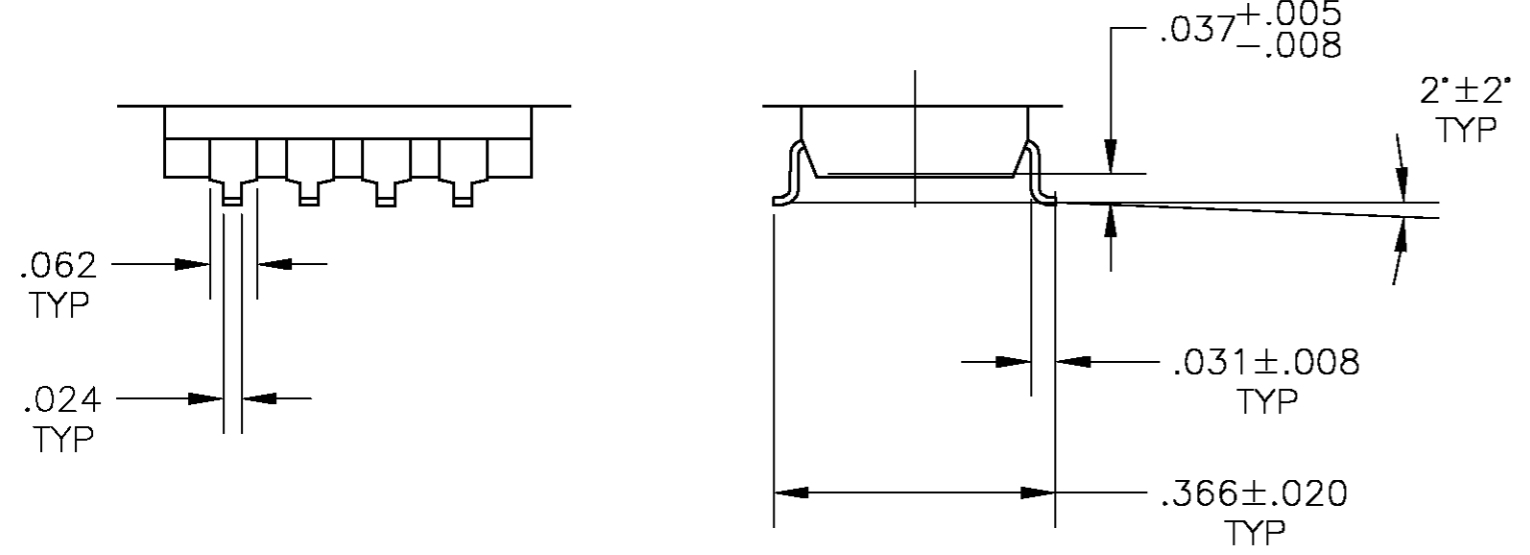
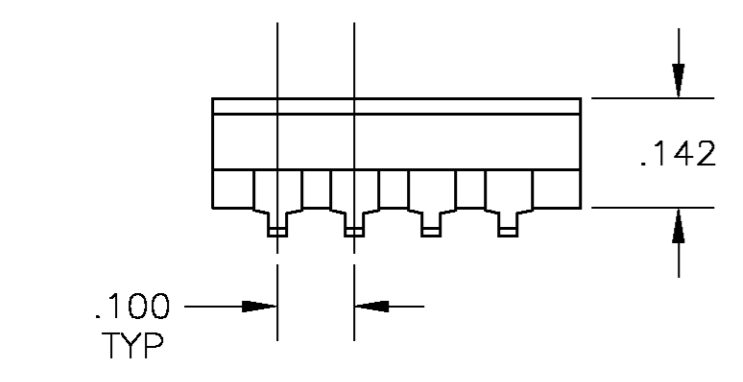
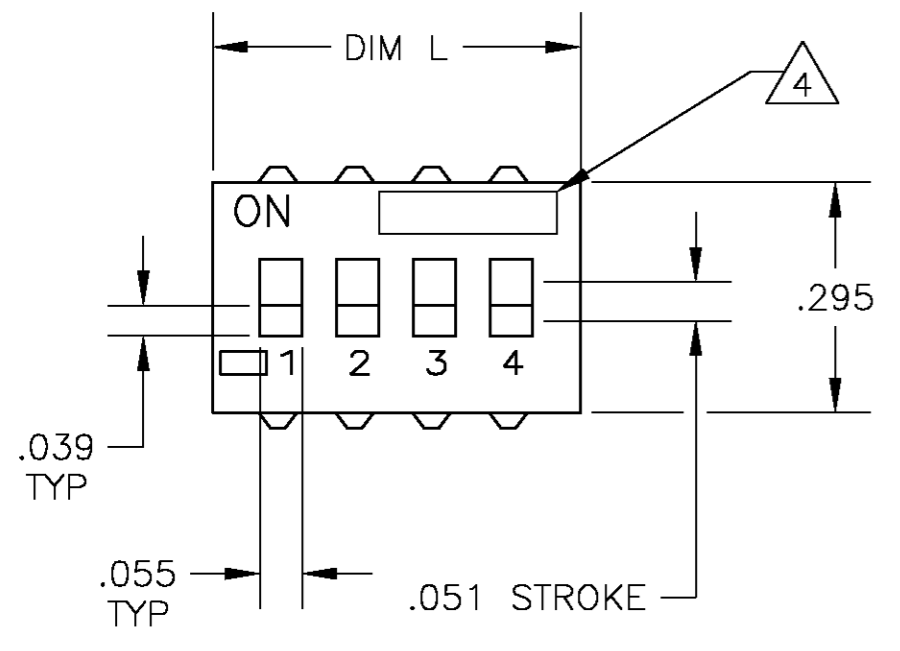
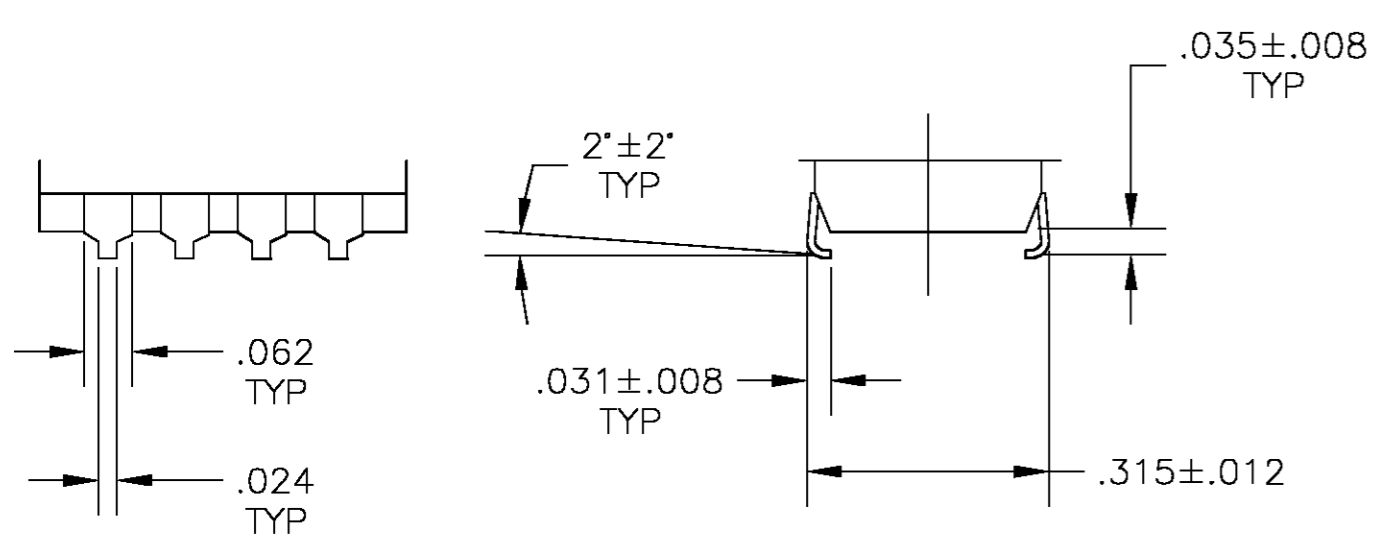


THIS DRAWING IS UNPUBLISHED. RELEASED FOR PUBLICATION
 © COPYRIGHT BY TYCO ELECTRONICS CORPORATION. ALL RIGHTS RESERVED.

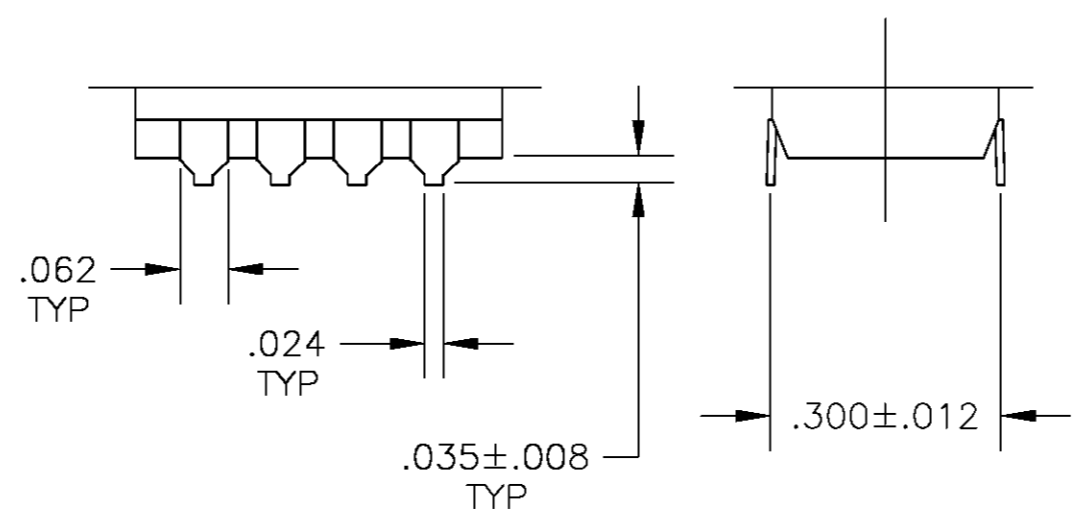
LOC		DIST		REVISIONS			
AD	00	P	LTR	DESCRIPTION	DATE	DWN	APVD
		C		EC 0G3C-0261-04	02JUL04	BSV	MS



SURFACE MOUNT
S (OUTSIDE "L")



SURFACE MOUNT
SA (INSIDE "L")



SURFACE MOUNT
SB (BUTT)

Specifications:

MATERIAL
 BASE, PPS,(12 POS PA46) UL94V-0, BLACK
 COVER, PPS,(12 POS PA46) UL94V-0, BLACK
 ACTUATOR, PA6T, UL94V-0, WHITE
 FIXED CONTACT/TERMINAL, CU ALLOY, PLATE TIN(90%) LEAD(10%) OVER COPPER
 MOVING CONTACT, CU ALLOY, PLATE-GOLD FLASH/NICKEL

ELECTRICAL
 MAX CONTACT RATING SWITCHING, 100MILLIAMPS @ 24 VDC
 MIN CONTACT RATING SWITCHING, .1MICROAMP @ 1 MILLIVOLT
 MAX CONTACT NON-SWITCHING, 1AMP @ 5 VDC
 INITIAL CONTACT RESISTANCE, 50 MILLIOHMS MAX.
 CONTACT RESISTANCE (AFTER ENVIRONMENTAL TEST), 100 MILLIOHMS
 CONTACT RESISTANCE (AFTER GAS TEST), 300 MILLIOHMS
 INSULATION RESISTANCE, 1,000 MEGOHMS MIN. @ 100 VDC
 DIELECTRIC STRENGTH, 500 VAC RMS @ SEA LEVEL
 LIFE EXPECTANCY, 1,000 CYCLES

MECHANICAL
 OPERATING FORCE, LESS THAN 800 GRAMS
 CONTACT PRESSURE, 280,000 PSI

ENVIRONMENTAL
 OPERATING TEMPERATURE, -30 TO +85 DEGREES C
 STORAGE TEMPERATURE, -45 TO + 100 DEGREES C
 CLEANING, AQUEOUS OR SOLVENT
 SOLDER HEAT RESISTANCE, 245 +/-5 DEGREES C FOR 30 SECONDS, MOUNTED ON .060 PCB, SWITCH "OFF".

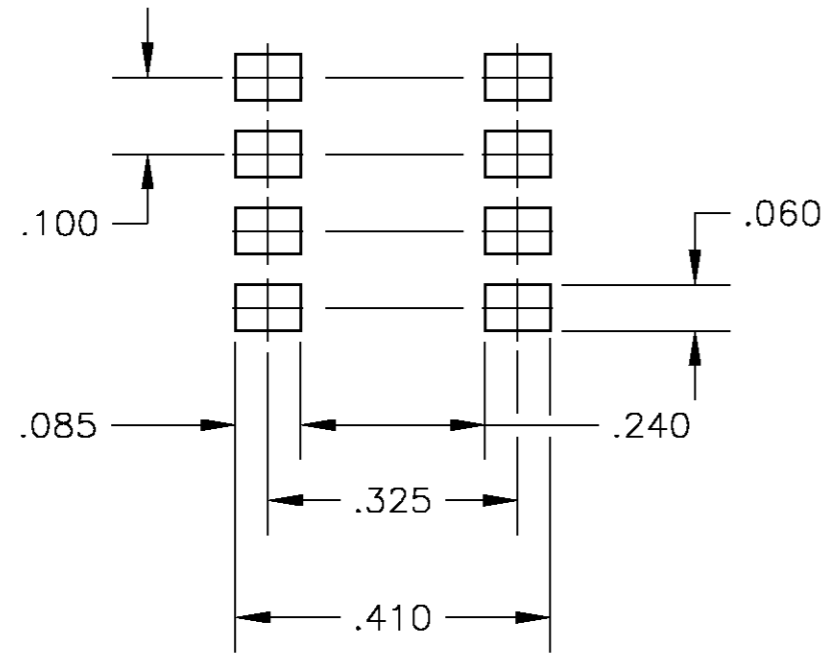
- SWITCHES TO BE RECEIVED IN THE "OFF" POSITION AND PACKAGED IN CLEAR TUBES TO ACCOMMODATE AUTO-INSERTION.
- TOP SURFACE TO BE CLEARLY MARKED AS SHOWN
- SWITCHES TO BE BLACK WITH WHITE ACTUATORS AND MARKINGS.
- △ 4 TERMINAL OPTION: OLD T&B P/N ADExxS, SA OR SB
S= OUTSIDE "L" TERMINALS; SA= INSIDE "L" TERMINALS;
SB= BUTT TERMINALS
- RECOMMENDED SOLDER PROCESS, IR REFLOW, TEMPERATURE 235 +/-5 DEGREES C FOR 5 SECONDS.
- TOP TAPE SEAL AVAILABLE, SEE TABLE FOR OPTIONS.
- TAPE AND REEL PACKAGING PER EIA 481.
- △ 8 MARK PER 202-37.

THIS DRAWING IS A CONTROLLED DOCUMENT.		DWN	19AUG03	tyco Electronics	Tyco Electronics Corporation Harrisburg, Pa 17105-3808		
DIMENSIONS: INCHES		CHK	26AUG03		NAME DIP SWITCH, ADF-SMT SERIES		
TOLERANCES UNLESS OTHERWISE SPECIFIED:		APVD	26AUG03	PRODUCT SPEC			
0 PLC ± -		M.SARVER		APPLICATION SPEC			
1 PLC ± -		M.SARVER		WEIGHT			
2 PLC ± -		M.SARVER		SIZE			
3 PLC ± .012		M.SARVER		CAGE CODE			
4 PLC ± -		M.SARVER		DRAWING NO			
ANGLES ± -		M.SARVER		RESTRICTED TO			
FINISH		M.SARVER		A2 00779 C=4-1437586-4			
MATERIAL		M.SARVER		SCALE 1:1 SHEET 1 OF 2 REV C			
		M.SARVER		CUSTOMER DRAWING			

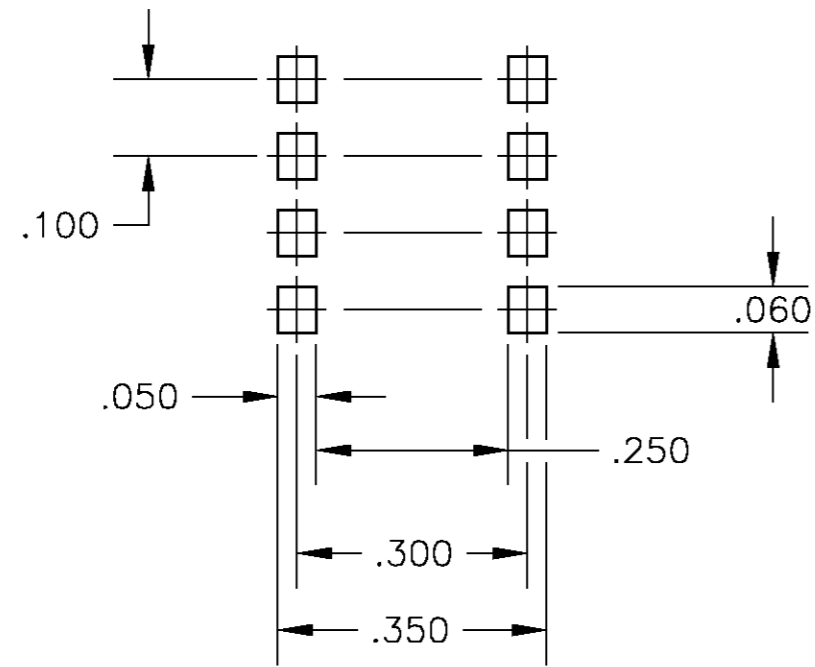
4-1437586-4

THIS DRAWING IS UNPUBLISHED. RELEASED FOR PUBLICATION
 © COPYRIGHT BY TYCO ELECTRONICS CORPORATION. ALL RIGHTS RESERVED.

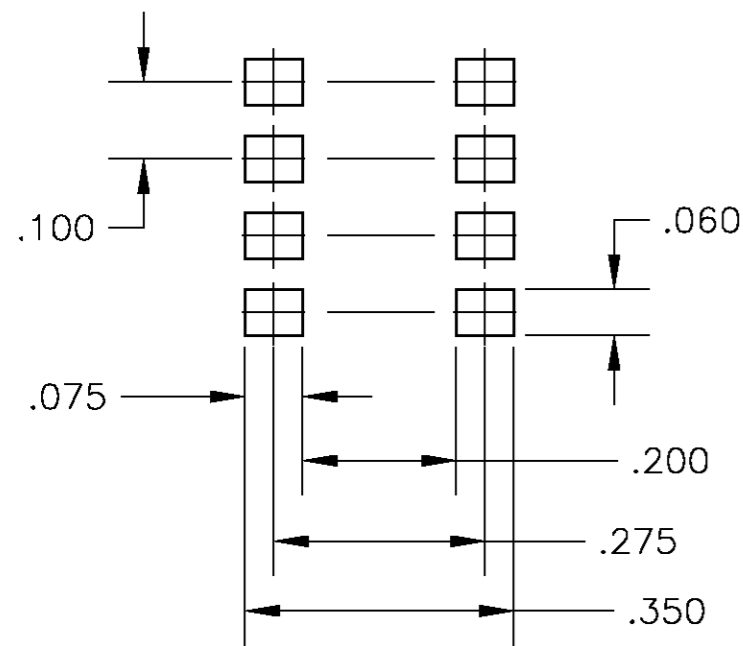
LOC		DIST		REVISIONS			
P	LTR	DESCRIPTION		DATE	DWN	APVD	
AD	00	SEE SHEET 1		-	-	-	



RECOMMENDED PAD LAYOUT
 SURFACE MOUNT
 S



RECOMMENDED PAD LAYOUT
 SURFACE MOUNT
 SB



RECOMMENDED PAD LAYOUT
 SURFACE MOUNT
 SA

ADF12STTR	YES	T&R	1.28	12	1437587-9
ADF12S	NO	Tube	1.28	12	1437587-8
ADF10STTR	YES	T&R	1.078	10	1437587-6
ADF10ST	YES	Tube	1.078	10	1437587-5
ADF10SA	NO	Tube	1.078	10	1437587-4
ADF10S	NO	Tube	1.078	10	1437587-3
ADF09STTR	YES	T&R	0.978	9	9-1437586-9
ADF09ST	YES	Tube	0.978	9	9-1437586-8
ADF09S	NO	Tube	0.978	9	9-1437586-7
ADF08STTR	YES	T&R	0.878	8	9-1437586-2
ADF08ST	YES	Tube	0.878	8	9-1437586-1
ADF08SAT	YES	Tube	0.878	8	9-1437586-0
ADF08SA	NO	Tube	0.878	8	8-1437586-9
ADF08S	NO	Tube	0.878	8	8-1437586-8
ADF07STTR	YES	T&R	0.778	7	8-1437586-4
ADF07ST	YES	Tube	0.778	7	8-1437586-3
ADF07S	NO	Tube	0.778	7	8-1437586-2
ADF06STTR	YES	T&R	0.678	6	7-1437586-9
ADF06ST	YES	Tube	0.678	6	7-1437586-8
ADF06SAT	YES	Tube	0.678	6	7-1437586-7
ADF06SA	NO	Tube	0.678	6	7-1437586-6
ADF06S	NO	Tube	0.678	6	7-1437586-5
ADF05STTR	YES	T&R	0.578	5	6-1437586-9
ADF05ST	YES	Tube	0.578	5	6-1437586-8
ADF05SB	NO	Tube	0.578	5	6-1437586-7
ADF05S	NO	Tube	0.578	5	6-1437586-6
ADF04ST	YES	Tube	0.478	4	6-1437586-3
ADF04SATTR	YES	T&R	0.478	4	6-1437586-2
ADF04SAT	YES	Tube	0.478	4	6-1437586-1
ADF04SA	NO	Tube	0.478	4	6-1437586-0
ADF04S	NO	Tube	0.478	4	5-1437586-9
ADF04STTR	YES	T&R	0.478	4	1437583-6
ADF03STTR	YES	T&R	0.378	3	5-1437586-5
ADF03ST	YES	Tube	0.378	3	5-1437586-4
ADF03SA	NO	Tube	0.378	3	5-1437586-3
ADF03S	NO	Tube	0.378	3	5-1437586-2
ADF03SATTR	YES	T&R	0.378	3	1437596-1
ADF02STTR	YES	T&R	0.278	2	4-1437586-9
ADF02ST	YES	Tube	0.278	2	4-1437586-8
ADF02SATTR	YES	T&R	0.278	2	4-1437586-7
ADF02SAT	YES	Tube	0.278	2	4-1437586-6
ADF02SA	NO	Tube	0.278	2	4-1437586-5
ADF02S	NO	Tube	0.278	2	4-1437586-4

THIS DRAWING IS A CONTROLLED DOCUMENT.		DWN	19AUG03	M.BINNER		Tyco Electronics Corporation Harrisburg, Pa 17105-3808
DIMENSIONS: INCHES		CHK	26AUG03	M.SARVER		
TOLERANCES UNLESS OTHERWISE SPECIFIED:		APVD	26AUG03	M.SARVER		
0 PLC ± - 1 PLC ± - 2 PLC ± - 3 PLC ± .012 4 PLC ± - ANGLES ± - FINISH -		PRODUCT SPEC		NAME		
MATERIAL		WEIGHT		APPLICATION SPEC		SIZE
-		-		-		CAGE CODE
		CUSTOMER DRAWING		DRAWING NO		RESTRICTED TO
				A2 00779		4-1437586-4
		SCALE		SHEET		REV
		4:1		2 OF 2		C