

ONE TOUCH FITTINGS-MANIFOLDS

ONE TOUCH FITTINGS-MANIFOLDS SERIES KM

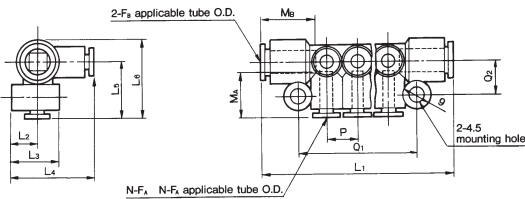
- ✓ Compact and lightweight
- ✓ Threaded or one touch fitting inlet or plug-in stem
- ✓ Ø4, 6, 8mm tube outlets
- ✓ 3, 6 or 10 way
- ✓ Many varieties available

TECHNICAL SPECIFICATIONS

Fluid	Air
Operating pressure	Vacuum to 9.9 Bar
Proof pressure	30 Bar
Ambient and fluid temperature	0-60°C
Thread (where applicable)	JIS B0203 (Taper pipe thread)
Applicable tube*	Nylon, Soft nylon, Polyurethane

*Dimensions to BS5409 Part 1

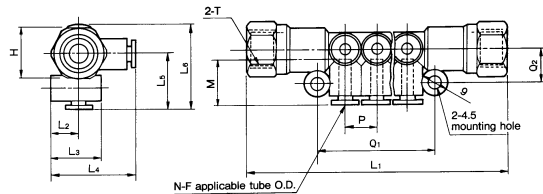
DIMENSIONS KM11



Dimensions in mm

Model	F _A	F _B	N	L ₁	L ₂	L ₃	L ₄	L ₅	L ₆	P	Q ₁	Q ₂	M _A	M _B	Port B min port size	Mass (g)
KM11-04-08-6	4	8	6	65	10	18	29.5	19.5	27	10.6	40	12	16	18.5	6	22
10			86	61.5							30					
KM11-06-10-6	6	10	6	76	10	19.5	31.5	21.5	31	13	47	13.5	17	21	7.5	32
10			102	73							44					
KM11-08-12-6	8	12	6	85	11.5	22.5	35.5	24	34.5	15.5	55	14.7	18.5	22	9	44
10			116	86							62					

DIMENSIONS KM12



MORE DIMENSIONS SEE NEXT PAGE

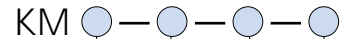
Dimensions in mm

Model	F	T Rc(PT)	N	H (Hex)	L ₁	L ₂	L ₃	L ₄	L ₅	L ₆	P	Q ₁	Q ₂	M	Port B min port size	Mass (g)
KM12-04-02-6	4	¼	6	17	89	10	18	29.5	19.5	29	10.6	40	12	16	6	67
KM12-04-02-10			10	110	61.5							75				
KM12-06-02-6	6	¼	6	17	99	10	19.5	31.5	21.5	31	13	47	13.5	17	7.5	84
KM12-06-02-10			10	125	73							96				
KM12-08-03-6	8	⅜	6	19	108	11.5	22.5	35.5	24	34.5	15.5	55	14.7	18.5	9	100
KM12-08-03-10			10	139	86							117				



Fittings & Tubing

HOW TO ORDER MANIFOLD SERIES KM



INLET CONNECTION

- 11 ...Push-in
- 12 ...Female thread
- 13 ...Push-in
- 14 ...Male Thread
- 15 ...Plug-in
- 16 ...Push-in stackable

OUTLET TUBE O.D.

- 04 ...4mm
- 06 ...6mm
- 08 ...8mm

INLET PORT THREAD OR TUBE O.D.

- 02 ...¼
- 03 ...⅜
- 08 ...8mm
- 10 ...10mm
- 12 ...12mm

NUMBER OF OUTLETS

- 33
- 66
- 1010

STOCKED PRODUCTS

FOR A LIST OF STOCKED PRODUCTS, PLEASE SEE THE CURRENT SMC PRICE LIST

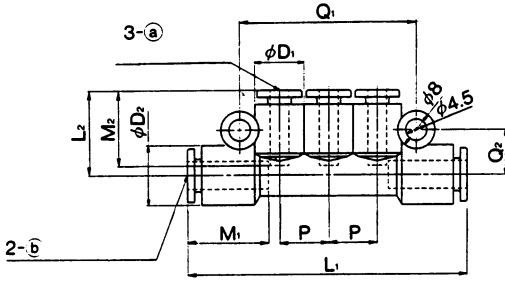


SEE INSIDE FRONT COVER FOR DETAILS OF YOUR LOCAL SALES OFFICE



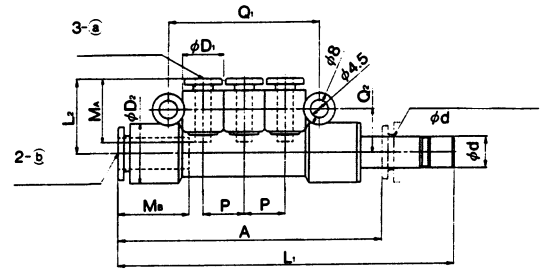
FOR FURTHER TECHNICAL DETAILS ON THIS PRODUCT REQUEST CATALOGUE REFERENCE E501

**DIMENSIONS
KM13**



a	b	Model	D1	D2	L1	L2	P	Q1	M1	M2	Effective Orifice (mm ²)	Weight
4	6	KM13-04-06-3	10.4	12.8	60	18.5	10.4	38.2	17	16	4.5	13
4	8	KM13-04-08-3	10.4	15.2	63.5	19	10.4	38.2	18.5	16	6	16
6	8	KM13-06-08-3	12.8	15.2	70.5	20	12.8	45.4	18.5	17	6	18
6	10	KM13-06-10-3	12.8	18.5	74.5	21	12.8	45.4	21	17	7.5	23
8	10	KM13-08-10-3	15.2	18.5	81.5	22.5	15.2	52.6	21	18.5	7.5	27

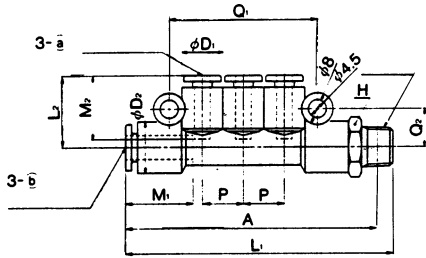
**DIMENSIONS
KM15**



a	b	Dia D	Model	D1	D2	L1	L2	P	Q1	Q2	A	Ma	Mb	Effective Orifice (mm ²)	Weight g
4	6	6	KM15-04-06-3	10.4	12.8	78.5	18.5	10.4	38.2	9.9	61.5	16	17	4.5	13
4	8	8	KM15-04-08-3	10.4	15.2	85.5	19	10.4	38.2	11.1	67	16	18.5	6	25
6	8	8	KM15-06-08-3	12.8	15.2	92.5	20	12.8	45.4	11.1	74	17	18.5	6	27
6	10	10	KM15-06-10-3	12.8	18.5	98	21	12.8	45.4	12.8	77	17	21	7.5	38
8	10	10	KM15-08-10-3	15.2	18.5	105	22.5	15.2	52.6	12.8	85	18.5	21	7.5	42

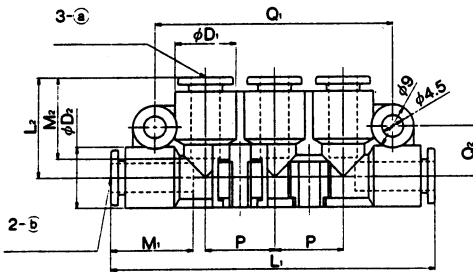
Fittings & Tubing

**DIMENSIONS
KM14**



a	b	R(PT)	Model	H	D1	D2	L1	L2	P	A	Q1	Q2	M1	M2	Effective Orifice (mm ²)	Weight g
4	6	1/8	KM14-04-06-01S-3	13	10.4	12.8	68	18.5	10.4	64	38.2	9.9	17	16	4.5	19
4	6	1/4	KM14-04-06-02S-3	14	10.4	12.8	71.5	18.5	10.4	65.5	38.2	9.9	17	16	4.5	26
4	6	3/8	KM14-04-06-03S-3	17	10.4	12.8	73.5	18.5	10.4	67.5	38.2	9.9	17	16	4.5	39
4	8	1/8	KM14-04-08-01S-3	17	10.4	15.2	73.5	19	10.4	69.5	38.2	11.1	18.5	16	6	31
4	8	1/4	KM14-04-08-02S-3	17	10.4	15.2	76.5	19	10.4	70.5	38.2	11.1	18.5	16	6	31
4	8	3/8	KM14-04-08-03S-3	17	10.4	15.2	77.5	19	10.4	71	38.2	11.1	18.5	16	6	39
6	8	1/8	KM14-06-08-01S-3	17	12.8	15.2	80	20	12.8	76.5	45.4	11.1	18.5	17	6	33
6	8	1/4	KM14-06-08-02S-3	17	12.8	15.2	83	20	12.8	77	45.4	11.1	18.5	17	6	41
6	8	3/8	KM14-06-08-03S-3	17	12.8	15.2	84	20	12.8	78	45.4	11.1	18.5	17	6	41
6	10	1/4	KM14-06-10-02S-3	19	12.8	18.5	87.5	21	12.8	81.5	45.4	12.8	21	17	7.5	44
6	10	3/8	KM14-06-10-03S-3	19	12.8	18.5	88.5	21	12.8	82	45.4	12.8	21	17	7.5	45
6	10	1/2	KM14-06-10-04S-3	22	12.8	18.5	92	21	12.8	84	45.4	12.8	21	17	7.5	67
8	10	1/4	KM14-08-10-02S-3	19	15.2	18.5	94	22.5	15.2	88	52.6	12.8	21	18.5	7.5	48
8	10	3/8	KM14-08-10-03S-3	19	15.2	18.5	95	22.5	15.2	89	52.6	12.8	21	18.5	7.5	48
8	10	1/2	KM14-08-10-04S-3	22	15.2	18.5	98.5	22.5	15.2	90.5	52.6	12.8	21	18.5	7.5	71

**DIMENSIONS
KM16**



a	b	Model	D1	D2	L1	L2	P	Q1	Q2	M1	M2	Effective Orifice (mm ²)	Weight g
4	4	KM16-04-04-3	12.8	12.8	68	20.9	14.5	50	10.5	16	16	3	19
4	6	KM16-04-06-3	12.8	12.8	68	20.9	14.5	50	10.5	17	16	4.5	18
6	6	KM16-06-06-3	12.8	12.8	68	20.9	14.5	50	10.5	17	17	4.5	18



FOR FURTHER TECHNICAL
DETAILS ON THIS
PRODUCT REQUEST
CATALOGUE REFERENCE
E501

Find price and stock options from leading distributors for KM11-04-08-10 on Findchips.com:

<https://findchips.com/search/KM11-04-08-10>

Find CAD models and details for this part:

<https://findchips.com/detail/km11-04-08-10/Microchip-Technology-Inc>