

■ ALUMINUM

■ GOLD SERIES

■ DOUBLE OR NO FLANGE

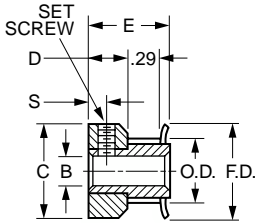


Fig. 1

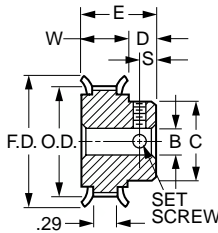


Fig. 2

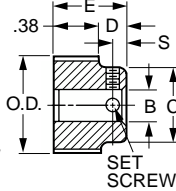
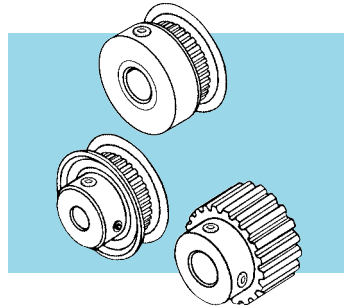


Fig. 3



MATERIAL: Aluminum Alloy
FINISH: Gold Iridite

FOR BELTS UP TO 1/4" WIDE

Catalog Number	Fig. No.	No. of Grooves	P.D.	O.D. +.003 -0.000	F.D. ±1/64	B Bore +.001 -0.000	W	E Lgth. ±1/64	C Hub Dia. ±1/64	D Hub Proj.	S	Set Screw						
A 6A16-010DF2504	1	10	.255	.235	.425	.125	—	9/16	.425	15/64	7/64	#4-40						
A 6A16-011DF2504		11	.280	.260	.450				.450									
A 6A16-012DF2504		12	.306	.286	.480				.480									
A 6A16-014DF2504		14	.357	.337	.530				.530									
A 6A16-015DF2506		15	.382	.362	.555				.555									
A 6A16-016DF2506		16	.407	.387	.580				.580									
A 6A16-018DF2506	2	18	.458	.438	.635	.1875	.389	5/8	.312	15/64	7/64	#6-40						
A 6A16-018DF2508									.635									
A 6A16-020DF2506	2	20	.509	.489	.685	.1875	.389	5/8	.364	15/64	7/64	#6-40						
A 6A16-020DF2508									.685									
A 6A16-021DF2506	2	21	.535	.515	.710	.1875	.389	5/8	.390	15/64	7/64	#6-40						
A 6A16-021DF2508									.710									
A 6A16-022DF2506	2	22	.560	.540	.740	.1875	.389	5/8	.390	15/64	7/64	#6-40						
A 6A16-022DF2508									.740									
A 6A16-024DF2508	2	24	.611	.591	.790	.250	.389	11/16	.442	19/64	5/32	#6-40						
A 6A16-025DF2508		25	.637	.617	.815				.468									
A 6A16-028DF2508		28	.713	.693	.895				.494									
A 6A16-030DF2508		30	.764	.744	.945				.546									
A 6A16-032DF2508	2	32	.815	.795	1.000	.250	.389	11/16	.598	19/64	5/32	#8-32						
A 6A16-036DF2508		36	.917	.897	1.105				.676									
A 6A16-040DF2508		40	1.019	.999	1.210				.754									
A 6A16-042DF2508	2	42	1.070	1.050	1.260	.405	23/32	.806	.858	5/16	5/32	#8-32						
A 6A16-044DF2508		44	1.120	1.100	1.315								.936					
A 6A16-048DF2508		48	1.222	1.202	1.420								1.222					
A 6A16-060DF2508		60	1.528	1.508	1.730													
A 6A16-060NF2508	3	60	1.528	1.508	—	.250	—	3/4	1.148	3/8	3/16	#8-32						
A 6A16-072NF2508		72	1.833	1.813	—				1.195									
A 6A16-080NF2510		80	2.037	2.017	—				.3125				—	3/4	1.500	3/8	3/16	#8-32
A 6A16-090NF2510		90	2.292	2.272	—													
A 6A16-100NF2510		100	2.546	2.526	—													
A 6A16-120NF2512		120	3.056	3.036	—													

NOTE: Pulleys with 10 to 16 grooves have 1 set screw; others have 2 at 90°.

For pulley stock and flanges, see Section 4.

**2 - TIMING PULLEYS
INCH**