

Inlet filter, front side mounting, circuit breaker TA45 2-pole

Standard- or Medical-Filter



C14



70° C



Description

- Panel Mount:
Screw-on from front side
- 3 Functions:
Inlet Protection class I, circuit breaker type TA45 2-pole, Line filter in standard and medical version
- Quick connect terminals 6.3 x 0.8 mm
- Alternative: version without line filter [6145](#)
- We recommend for new applications type [DF12](#)

Approvals

- VDE License Number: 117118
- UL License Number: E72928

Characteristics

- All single elements are already wired
Unwired versions available on request
- Line switch non-illuminated or illuminated
Thermal overload protection
Optional with undervoltage release or remote trip release
- Qualified for use in equipment according IEC/EN 60950

Weblinks

Approvals: <http://www.schurter.com/approvals>
RoHS: <http://www.schurter.com/rohs>

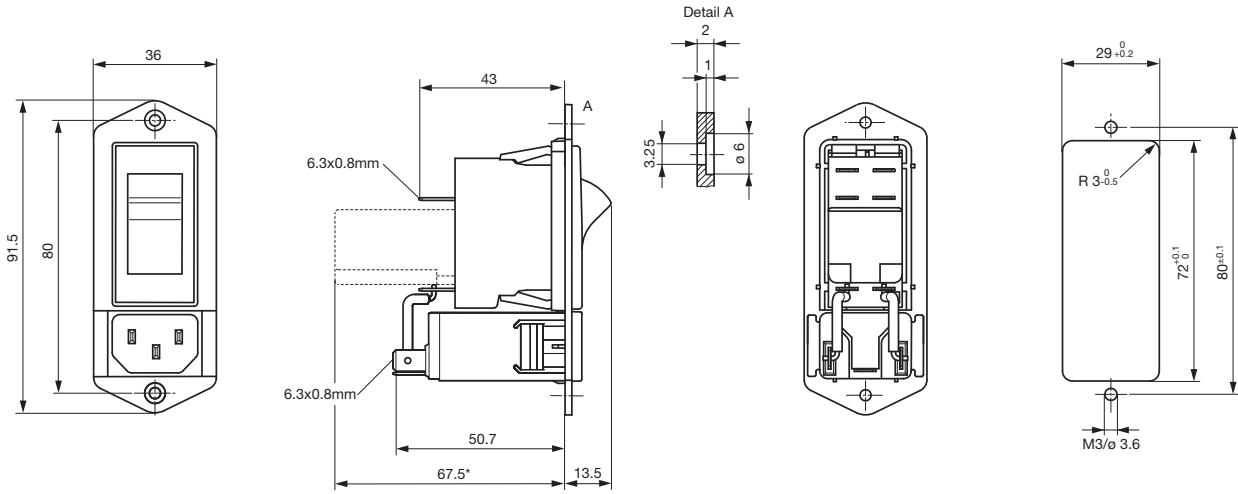
Technical Data

| | |
|---------------------------|---|
| Ratings IEC | 1 - 10 A @ Ta 40 °C / 250 VAC; 50 Hz |
| Ratings UL/CSA | 1 - 15 A @ Ta 40 °C / 125 VAC; 60 Hz |
| Leakage Current | standard < 0.5 mA (250 V / 60 Hz) medical < 5 µA (250 V / 60 Hz) |
| Dielectric Strength | > 1.7 kVDC between L-N > 2.7 kVDC between L/N-PE Test voltage (2 sec) |
| Allowable Operation Temp. | -10 °C to 55 °C |
| Climatic Category | 10/055/21 acc. to, IEC 60068-1 |
| Degree of Protection | from front side IP 40 acc. to IEC 60529 |
| Protection Class | Suitable for appliances with protection class I acc. to IEC 61140 |
| Terminal | Quick connect terminals 6.3 x 0.8 mm |
| Panel Thickness s | Screw-on: max 8 mm Mounting screw torque max 0.5 Nm |
| Material: Housing | Thermoplastic, black, UL 94V-0 |

| | |
|--------------------------|--|
| Appliance-Inlet /-Outlet | C14 acc. to IEC/EN 60320-1, UL 498, CSA C22.2 no. 42 (for cold condition) pin-temperature 70 °C, 10 A, Protection class I |
| Circuit breaker | Acc. IEC/EN 60934, UL 1077, CSA 22.2 no. 235 2-pole rocker switch, illuminated or non-illuminated. Optional with undervoltage- or remote trip release Short circuit capacity Icn: at In < 3A/240VAC : 10 x In at In ≥ 3A/240VAC : 300A |
| Line Switch | acc. to IEC 61058-1 Technical details |
| Line Filter | Standard and Medical Version, IEC 60939, IEC 60601-1, UL 1283, UL 544, EN 133 200, CSA C22.2 no. 8 Technical details |
| MTBF | > 100'000 h acc. to MIL-HB-217 F |

Dimensions

Length |-----| 67.5 mm



* --- Version TA45 with undervoltage release

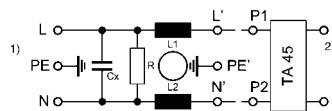
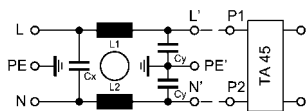
Technical Data of Filter-Components

| Rated Current [A] | Filter-Type | Inductances | Capacitance | Capacitance | R [MΩ] |
|----------------------|----------------------|-------------|-------------|-------------|--------|
| | | L [mH] | CX [nF] | CY [nF] | |
| 1 | Standard Version | 2 x 11 | 47 | 2.2 | - |
| 2 | Standard Version | 2 x 4 | 47 | 2.2 | - |
| 3 | Standard Version | 2 x 2.5 | 47 | 2.2 | - |
| 4 | Standard Version | 2 x 1.6 | 47 | 2.2 | - |
| 6 | Standard Version | 2 x 0.7 | 47 | 2.2 | - |
| 8 | Standard Version | 2 x 0.6 | 47 | 2.2 | - |
| 10 | Standard Version | 2 x 0.4 | 47 | 2.2 | - |
| 15 | Standard Version | 2 x 0.1 | 47 | 2.2 | - |
| 1 | Medical Version (M5) | 2 x 11 | 47 | - | 1 |
| 2 | Medical Version (M5) | 2 x 4 | 47 | - | 1 |
| 6 | Medical Version (M5) | 2 x 0.7 | 47 | - | 1 |
| 8 | Medical Version (M5) | 2 x 0.6 | 47 | - | 1 |
| 10 | Medical Version (M5) | 2 x 0.4 | 47 | - | 1 |
| 15 | Medical Version (M5) | 2 x 0.1 | 47 | - | 1 |

Diagrams

Standard version

Medical version



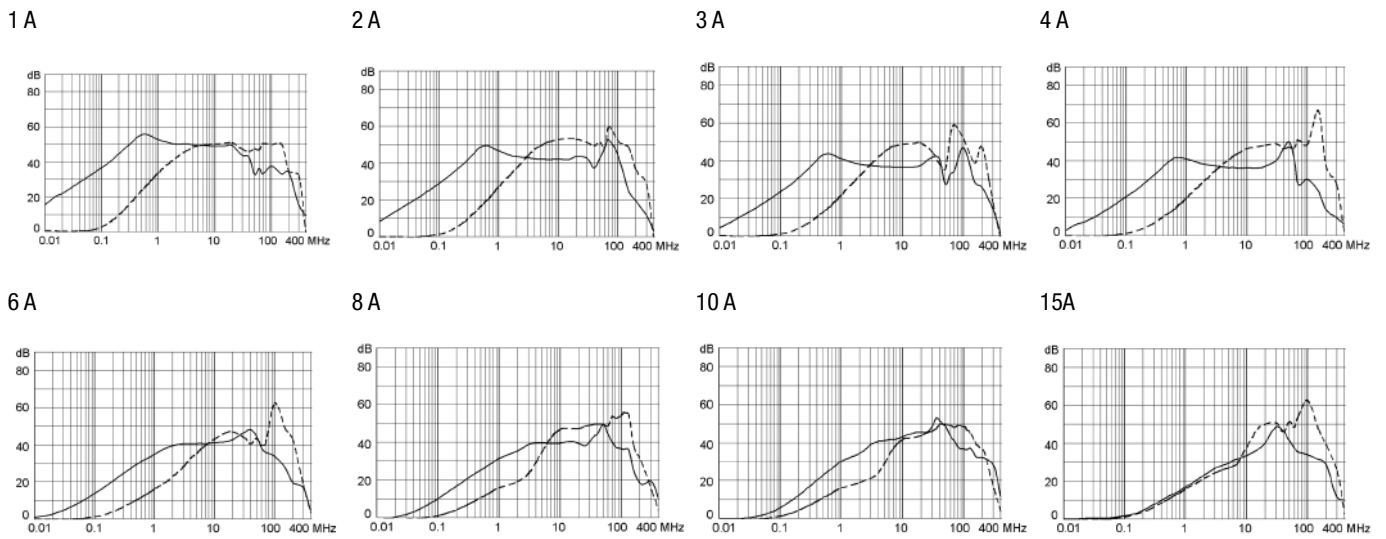
1) Line
2) Load

1) Line
2) Load

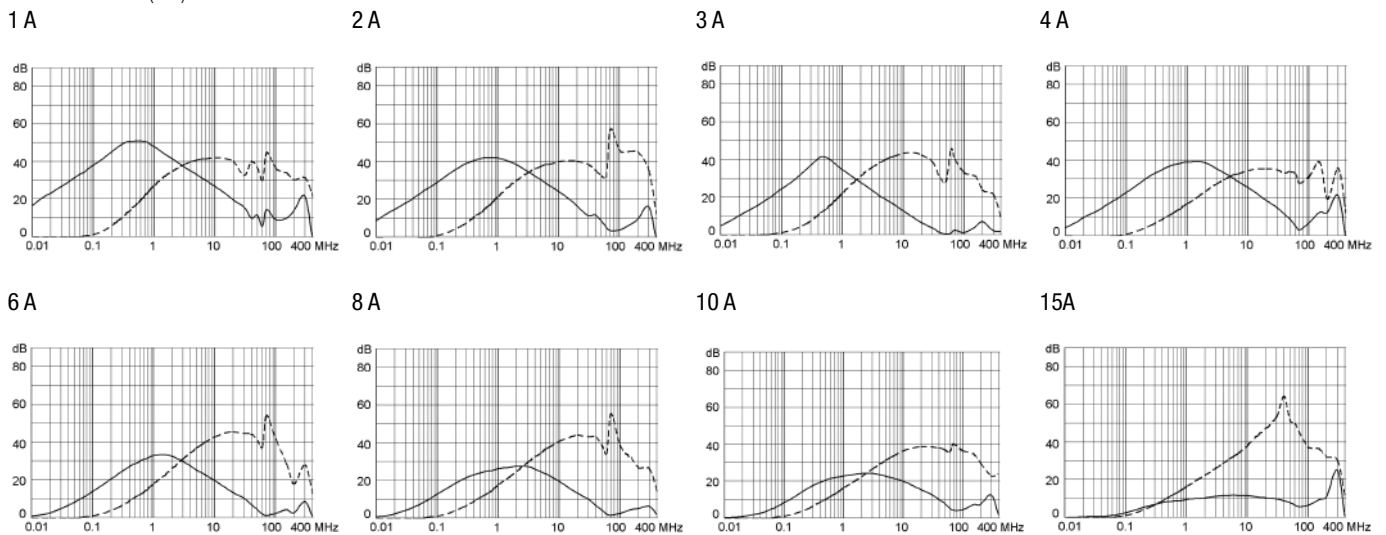
Attenuation loss

--- differential mode ____ common mode

Standard version



Medical version (M5)



Packaging unit 20 Pcs

Accessory

Description

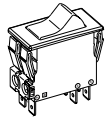


Assorted Covers

Table 1 Selection for type TA45

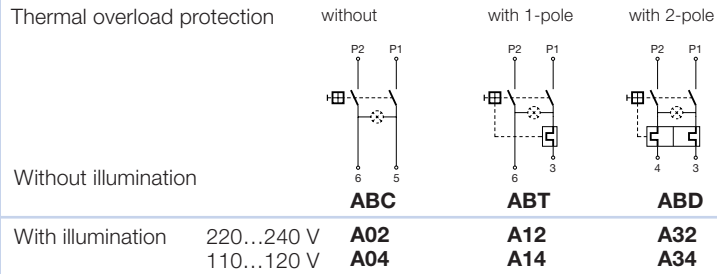
Order example

ABT **W** **F** **150** **C0**



- Line switch
 - 2-pole, rocker actuated
 - Quick connect terminal
- Other types on request

Diagram



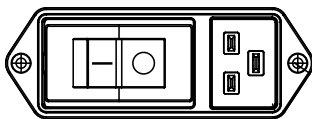
Colours

| Switch front | | Rocker | |
|----------------|--|--------|----------------|
| W black | | white | — |
| B black | | black | — |
| 6 black | | — | orange transp. |

Rocker legend

| Surface | Illustration | Colour of print | Surface | Illustration | Colour of print |
|-------------------|--------------|-----------------|------------------|--------------|-----------------|
| F embossed | — ○ | | M printed | — ○ | black |
| H printed | ON OFF | white | P printed | I ○ | white |
| K printed | ON OFF | black | R printed | I ○ | black |
| L printed | — ○ | white | | | |

Position of the rocker legend
e.g F



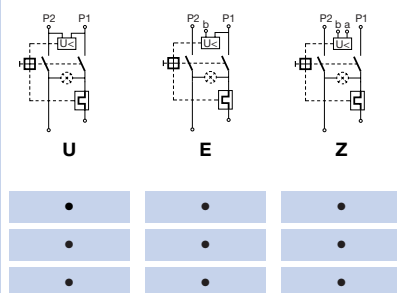
Rated current:

- Without thermal overload protection: code C00 } $I_n = 20\text{ A}$
- With thermal overload protection: rated current I_n (A)

| I_n | Code | I_n | Code | I_n | Code | I_n | Code |
|-------|------------|-------|------------|-------|------------|-------|------------|
| 10,0 | 100 | 13,0 | 130 | 16,0 | 160 | 19,0 | 190 |
| 11,0 | 110 | 14,0 | 140 | 17,0 | 170 | 20,0 | 200 |
| 12,0 | 120 | 15,0 | 150 | 18,0 | 180 | | |

Without release: code C0

Undervoltage release



Remote trip release

