



# RL-2525

## SURFACE MOUNT CHIP INDUCTORS

### DESCRIPTION

- Chip Inductors

### ENVIRONMENTAL DATA

- Storage temperature range: -40°C to +125°C
- Operating temperature range: -40°C to +130°C

### PACKAGING INFORMATION

- Packaging information: pg. 489, 494

### FEATURES & APPLICATIONS

- Offers over a hundred standard values of miniature inductors that are designed specifically for compact assemblies requiring surface mount components
- Can be supplied on reels for automated assemblies or in bulk packaging
- Standard 1812 package

Verify operation with sample in actual circuit. Order samples at [www.rencousa.com](http://www.rencousa.com).

### MECHANICAL DIMENSIONS

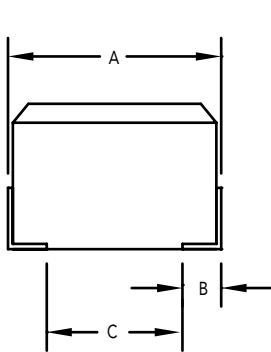
U.S. Standard (mm)

PART NUMBER	A (MAX.)	B ±0.004 (0.1)	C ±0.012 (0.3)	D (MAX.)	E (MAX.)	F (MAX.)
RL-2525	0.189 (4.800)	0.035 (0.889)	0.090 (2.200)	0.130 (3.300)	0.069 (1.750)	0.134 (3.21)

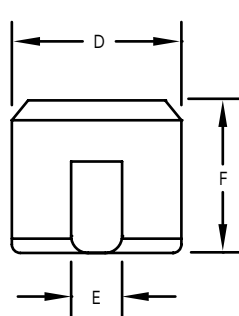
PART NUMBER	PART WEIGHT
RL-2525	0.15g (0.005oz)

G (REF.)	H (REF.)	I (REF.)
0.06 (1.50)	0.06 (1.60)	0.09 (2.20)

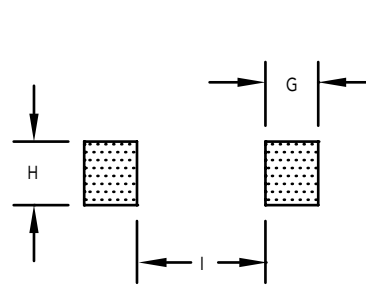
FRONT VIEW



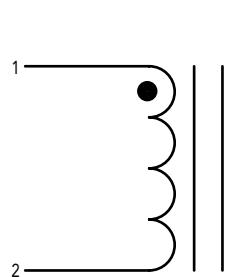
SIDE VIEW



RECOMMENDED LAND PATTERN



SCHEMATIC



# RL-2525

Renco Part No. RL-2515	Inductance ( $\mu$ H)	DCR Max. (Ohms)	SRF (MHz) Min.	Q Typical Min.	Irms (mA)	Measuring Frequency (MHz)
RL-2525-0.22	0.22 $\pm$ 20%	0.32	350.0	30.0	450.0	25.200
RL-2525-0.27	0.27 $\pm$ 20%	0.36	320.0	30.0	450.0	25.200
RL-2525-0.33	0.33 $\pm$ 20%	0.40	300.0	30.0	450.0	25.200
RL-2525-0.39	0.39 $\pm$ 20%	0.45	350.0	30.0	450.0	25.200
RL-2525-0.47	0.47 $\pm$ 20%	0.50	220.0	30.0	450.0	25.200
RL-2525-0.56	0.56 $\pm$ 20%	0.55	180.0	30.0	450.0	25.200
RL-2525-0.68	0.68 $\pm$ 20%	0.60	160.0	30.0	450.0	25.200
RL-2525-0.82	0.82 $\pm$ 20%	0.67	140.0	30.0	450.0	25.200
RL-2525-1.0	1.00 $\pm$ 20%	0.50	100.0	50.0	450.0	7.960
RL-2525-1.2	1.20 $\pm$ 20%	0.55	80.0	50.0	430.0	7.960
RL-2525-1.5	1.50 $\pm$ 20%	0.60	70.0	50.0	410.0	7.960
RL-2525-1.8	1.80 $\pm$ 20%	0.65	60.0	50.0	390.0	7.960
RL-2525-2.2	2.20 $\pm$ 20%	0.70	55.0	50.0	380.0	7.960
RL-2525-2.7	2.70 $\pm$ 20%	0.75	50.0	50.0	370.0	7.960
RL-2525-3.3	3.30 $\pm$ 20%	0.80	45.0	50.0	355.0	7.960
RL-2525-3.9	3.90 $\pm$ 10%	0.90	40.0	50.0	330.0	7.960
RL-2525-4.7	4.70 $\pm$ 10%	1.00	35.0	50.0	315.0	7.960
RL-2525-5.6	5.60 $\pm$ 10%	1.10	33.0	50.0	300.0	7.960
RL-2525-6.8	6.80 $\pm$ 10%	1.20	27.0	50.0	285.0	7.960
RL-2525-8.2	8.20 $\pm$ 10%	1.40	25.0	50.0	270.0	7.960
RL-2525-10	10.00 $\pm$ 10%	1.60	20.0	50.0	250.0	7.960
RL-2525-12	12.00 $\pm$ 10%	2.00	18.0	50.0	225.0	2.520
RL-2525-15	15.00 $\pm$ 10%	2.50	17.0	50.0	200.0	2.520
RL-2525-18	18.00 $\pm$ 10%	2.80	15.0	50.0	190.0	2.520
RL-2525-22	22.00 $\pm$ 10%	3.20	13.0	50.0	180.0	2.520
RL-2525-27	27.00 $\pm$ 10%	3.60	12.0	50.0	170.0	2.520
RL-2525-33	33.00 $\pm$ 10%	4.00	11.0	50.0	160.0	2.520
RL-2525-39	39.00 $\pm$ 10%	4.50	10.0	50.0	150.0	2.520
RL-2525-47	47.00 $\pm$ 10%	5.00	10.0	50.0	140.0	2.520
RL-2525-56	56.00 $\pm$ 10%	5.50	9.0	50.0	135.0	2.520
RL-2525-68	68.00 $\pm$ 10%	6.00	9.0	50.0	130.0	2.520
RL-2525-82	82.00 $\pm$ 10%	7.00	8.0	50.0	120.0	2.520
RL-2525-100	100.00 $\pm$ 10%	8.00	7.0	40.0	110.0	2.520
RL-2525-120	120.00 $\pm$ 10%	8.00	6.0	40.0	110.0	0.796
RL-2525-150	150.00 $\pm$ 10%	9.00	5.0	40.0	105.0	0.796
RL-2525-180	180.00 $\pm$ 10%	9.50	5.0	40.0	102.0	0.796
RL-2525-220	220.00 $\pm$ 10%	12.00	4.0	40.0	100.0	0.796

**NOTES:**

1. ELECTRICAL SPECIFICATIONS MEASURED AT 25°C
2. Irms - CURRENT THAT CAUSES THE TEMPERATURE TO RISE APPROX. 20°C ABOVE AMBIENT OF 25°C

**ORDERING INFORMATION:  
PART NUMBER SYSTEM**

RL-2505-XXX-XX

"T" OR "B" FOR TAPE  
OR BULK PACKAGING

ORDER QUANTITY: 2,000 PIECES FOR TAPE AND  
REEL, ANY QUANTITY FOR BULK PACKAGING

INDUCTANCE VALUE



**RENCO ELECTRONICS INC.**

595 International Place, Rockledge, FL 32955-4200 USA • www.rencousa.com • ISO 9001 Certified  
Toll Free Engineering Hot Line: 800.645.5828 • P: 321.637.1000 • F: 321.637.1600

