



## ORDERING INFORMATION - CODE NUMBERING SYSTEM

Specify Complete Connector By Selecting An Option From Step 1 Through 7

STEP	1	2	3	4	5	6	7	8	9
EXAMPLE	PLB	06	F	3	0	0	A1	/AA	—

### STEP 1 - BASIC SERIES

- PLA - 1 Row
- PLAH - 1 Row High conductivity contacts
- PLB - 2 Row
- PLBH - 2 Row High conductivity contacts
- PLC - 3 Row
- PLCH - 3 Row High conductivity contacts

### STEP 2 - CONNECTOR VARIANTS

- 1 Row - 03, 04, 06, 08
- 2 Row - 06, 08, 12, 16
- 3 Row - 09, 12, 18, 24, 30

### STEP 3 - CONNECTOR GENDER

- M - Male
- F - Female

### STEP 4 - CONTACT TERMINATION TYPE

- \* 0 - Order contacts separately for cable connectors for connection systems 5, 6, 7, 8 and 9.
- \* 1 - Removable contact, panel mounted connector for connection system 8. Order contacts separately.
- 2 - Solder, 18 AWG [1.0mm<sup>2</sup>] max. for panel mount connector, for connection system 8. Not available as PL\*H.
- 3 - Solder, Straight Printed Board Mount with 0.146 [3.71] tail extension for connection systems 1, 4 and 6.
- 32 - Solder, Straight Printed Board Mount with 0.377 [9.58] tail extension for connection system 3 and systems 1, 4 and 6.
- 4 - Solder, 90° Printed Board Mount with 0.146 [3.71] tail extension for connection systems 1, 2 and 5.
- 42 - Solder, 90° Printed Board Mount with 0.377 [9.58] tail extension for connection system 3 and systems 1, 2 and 5.
- 62 - Press-fit, compliant Termination Right Angle Printed Board Mount, termination length 0.183 [4.65]. Must select "B3" in step 5.
- 63 - Press-fit, compliant Termination Right Angle Printed Board Mount, termination length 0.219 [5.56]. Must select "B3" in step 5.
- \* 7 - Order contacts separately for cable connectors for connection systems 5, 6, 7, 8 and 9. Terminating side of insulator has 0.165 [4.19]  $\varnothing$  c'bore for large wire sizes.
- \* 8 - Removable contact, panel mounted connector for connection system 8. Order contacts separately. Terminating side of insulator has 0.165 [4.19]  $\varnothing$  c'bore for large wire sizes.
- 92 - Straight PCB Mount, Press-Fit, length 0.183 [4.65] for 0.093 inch [2.36] thick board.
- 93 - Straight PCB Mount, Press-Fit, length 0.218 [5.54] for 0.125 inch [3.18] thick board.

### STEP 5 - MOUNTING STYLE

- 0 - No added accessories.
- B - Metal 90° Mounting Bracket.
- BN - Metal 90° Mounting Bracket with Push-on Fastener.
- B3 - Plastic 90° Mounting Bracket with Cross Bar.
- B3N - Plastic 90° Mounting Bracket with Cross Bar and Push-on Fastener.
- N - Push-On Fastener For Straight Printed Board Mount Connectors
- ST2 - Self-tapping screws 2-28 x 0.250 [6.35] length for 0.093 [2.36] thick board.
- ST3 - Self-tapping screws 2-28 x 0.312 [7.92] length for 0.125 [3.18] thick board.

\* For high conductivity contact connectors, order PL\* connectors and \*C112N(2)S contacts

### STEP 9 - SPECIAL OPTIONS

Sequential Mating Systems refer to page 22.

CONTACT TECHNICAL SALES FOR SPECIAL OPTIONS

### STEP 8 - ENVIRONMENTAL COMPLIANCE OPTIONS

/AA - Compliant per EU Directive 2002/95/EC (RoHS)



**NOTE:** If compliance to environmental legislation is not required, this step will not be used.  
Example: PLB06F300A1

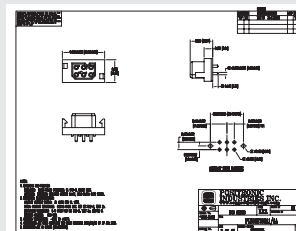
### STEP 7 - CONTACT PLATING FOR PRINTED BOARD CONNECTORS

- 0 - Crimp Contacts ordered separately.
- A1 - Gold flash over nickel on mating end and termination end.
- A2 - Gold flash over nickel on mating end and 0.00020 inch [5.00 $\mu$ ] tin-lead solder coat on termination end. Not available with code 62, 63, 92 or 93 in step 4.
- C1 - 0.000030 inch [0.75 $\mu$ ] gold over nickel on mating end and termination end.
- C2 - 0.000030 inch [0.75 $\mu$ ] gold over nickel on mating end and 0.00020 inch [5.00 $\mu$ ] tin-lead solder coated termination end. Not available with code 62, 63, 92 or 93 in step 4.
- D1 - 0.000050 inch [1.27 $\mu$ ] gold over nickel on mating end and termination end.
- D2 - 0.000050 inch [1.27 $\mu$ ] gold over nickel on mating end and 0.00020 inch [5.00 $\mu$ ] tin-lead solder coated termination end. Not available with code 62, 63, 92 or 93 in step 4.

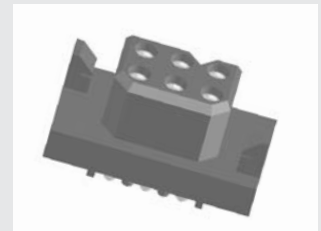
### STEP 6 - HOODS AND PANEL MOUNT

- 0 - None.
- 5 - Top Opening Hood.
- 6 - Panel Mount, quick release.
- 81 - Panel Mount, fixed for 0.040 [1.02] thick panel.
- 82 - Panel Mount, fixed for 0.060 [1.52] thick panel.
- 83 - Panel Mount, fixed for 0.090 [2.29] thick panel.
- 11 - Blind Mating System for 0.040 [1.02] thick panel.
- 12 - Blind Mating System for 0.060 [1.52] thick panel.
- 13 - Blind Mating System for 0.090 [2.29] thick panel.
- 14 - Blind Mating System for 0.120 [3.05] thick panel.

**NOTE:** Once you have made a connector selection, contact Technical Sales if you would like to receive a drawing in DXF, PDF format or a 3-dimensional IGES file.



SK Drawing



3-dimensional model