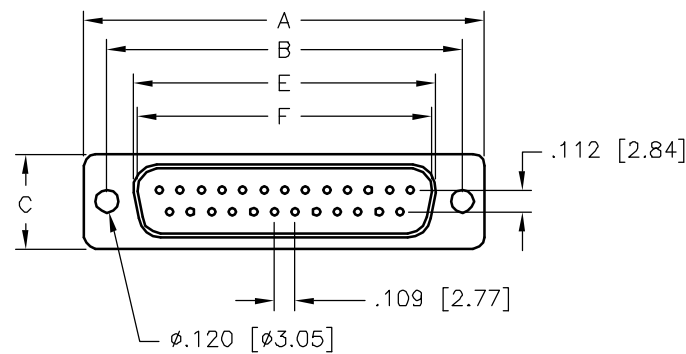
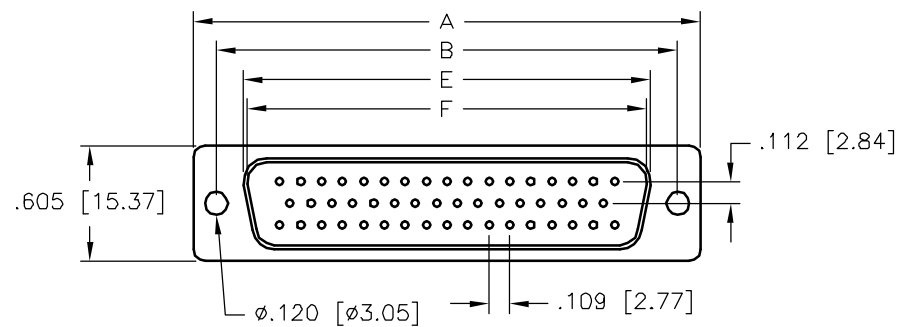
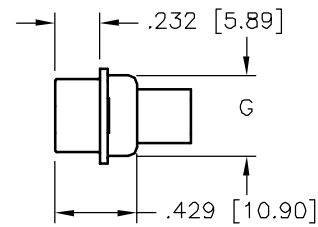


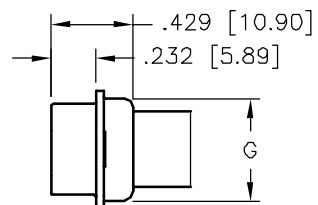
CLINCH NUT OPTION



9 THROUGH 37 POSITION



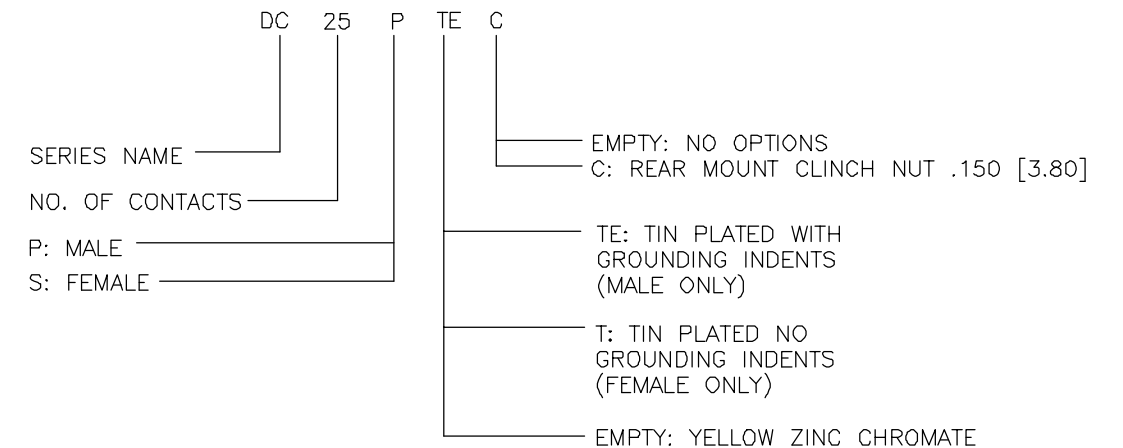
50 POSITION



REVISIONS				
ZONE	REV	DESCRIPTION	DATE	APPROVED

No. of Contacts	Shell Size	DIMENSIONS INCHES [MM]						
		A	B	C	D	E Max. Female	F Min. Male	G
09	E	1.213 [30.81]	0.984 [24.99]	0.494 [12.55]	0.759 [19.28]	0.643 [16.33]	0.666 [16.92]	0.422 [10.72]
15	A	1.541 [39.14]	1.310 [33.27]	0.494 [12.55]	1.089 [27.65]	0.971 [24.66]	0.994 [25.25]	0.422 [10.72]
25	B	2.088 [53.04]	1.850 [46.99]	0.494 [12.55]	1.626 [41.30]	1.511 [38.38]	1.534 [38.96]	0.422 [10.72]
37	C	2.730 [69.34]	2.500 [63.50]	0.494 [12.55]	2.261 [57.44]	2.159 [54.84]	2.182 [55.42]	0.422 [10.72]
50	D	2.638 [67.00]	2.406 [61.11]	0.605 [15.37]	2.178 [55.32]	2.064 [52.43]	2.079 [52.81]	0.527 [13.40]

ORDER INFORMATION



NOTES:

1. SHELL MATERIAL: STEEL
2. SHELL FINISH: SEE ORDER INFORMATION
3. INSULATOR MATERIAL: GLASS FILLED PBT UL94V-0
4. TEMPERATURE RANGE: -55° TO +105° CENTIGRADE
5. VOLTAGE RATING: 300 VDC
6. CURRENT RATING: 3 AMPS
7. INSULATION RESISTANCE: >3000 MEGOHMS
8. INSULATION COLOR: BLACK

UNLESS OTHERWISE SPECIFIED		Northern Technologies <small>THIS DRAWING IS THE PROPERTY OF NORTHERN TECHNOLOGIES AND SHOULD NOT BE REPRODUCED WITHOUT NORTHERN TECHNOLOGIES WRITTEN PERMISSION.</small>		
1. ALL DIMENSIONS ARE IN INCHES (MM) 2. DIMENSIONS ARE TYPICAL				
DRAWN	Luis C.	27-FEB-02	DESCRIPTION DC SERIES CONNECTORS	
CHECKED	JSD	27-FEB-02	SIZE B	CODE 100_153
ISSUED	05-MAR-02	SCALE 1:1	DWG NO. 0002-100-153	REV
			SHEET 1 OF 1	