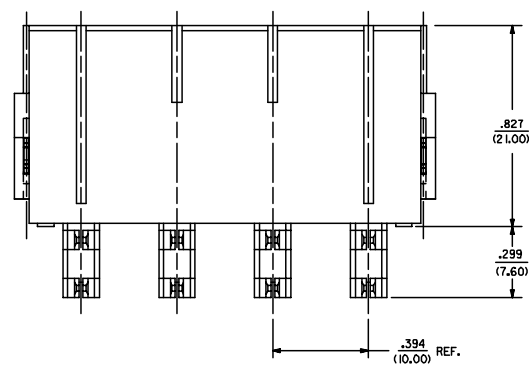
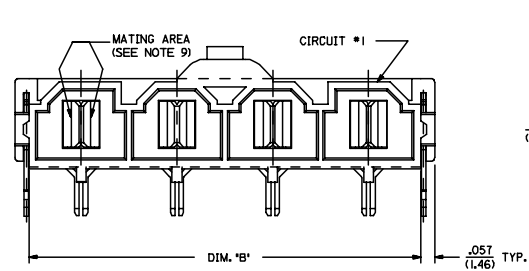


ITEM NUMBER	CKT. SIZE	DIM. 'A'	DIM. 'B'	DIM. 'C'	TERMINAL PLATING
42820-2212	2	.138/(3.50)	.823/(20.90)	.071/(1.80)	
42820-2219	2	.138/(3.50)	.823/(20.90)	.071/(1.80)	
42820-2222	2	.201/(5.10)	.823/(20.90)	.102/(2.60)	
42820-2232	2	.201/(5.10)	.823/(20.90)	.134/(3.40)	
42820-2239	2	.201/(5.10)	.823/(20.90)	.134/(3.40)	
42820-2242	2	.327/(8.30)	.823/(20.90)	.259/(6.58)	
42820-3212	3	.138/(3.50)	1.217/(30.90)	.071/(1.80)	
42820-3222	3	.201/(5.10)	1.217/(30.90)	.102/(2.60)	
42820-3229	3	.201/(5.10)	1.217/(30.90)	.102/(2.60)	
42820-3232	3	.201/(5.10)	1.217/(30.90)	.134/(3.40)	
42820-3242	3	.327/(8.30)	1.217/(30.90)	.259/(6.58)	
42820-4212	4	.138/(3.50)	1.610/(40.90)	.071/(1.80)	
42820-4222	4	.201/(5.10)	1.610/(40.90)	.102/(2.60)	
42820-4232	4	.201/(5.10)	1.610/(40.90)	.134/(3.40)	
42820-4242	4	.327/(8.30)	1.610/(40.90)	.259/(6.58)	
42820-5212	5	.138/(3.50)	2.004/(50.90)	.071/(1.80)	
42820-5222	5	.201/(5.10)	2.004/(50.90)	.102/(2.60)	
42820-5232	5	.201/(5.10)	2.004/(50.90)	.134/(3.40)	
42820-5242	5	.327/(8.30)	2.004/(50.90)	.259/(6.58)	
42820-6212	6	.138/(3.50)	2.389/(60.90)	.071/(1.80)	
42820-6222	6	.201/(5.10)	2.389/(60.90)	.102/(2.60)	
42820-6229	6	.201/(5.10)	2.389/(60.90)	.102/(2.60)	
42820-6232	6	.201/(5.10)	2.389/(60.90)	.134/(3.40)	
42820-6242	6	.327/(8.30)	2.389/(60.90)	.259/(6.58)	
42820-2332	2	.201/(5.10)	.823/(20.90)	N/A	
42820-2342	2	.327/(8.30)	.823/(20.90)	N/A	
42820-2213	2	.138/(3.50)	.823/(20.90)	.071/(1.80)	
42820-2223	2	.201/(5.10)	.823/(20.90)	.102/(2.60)	
42820-2233	2	.201/(5.10)	.823/(20.90)	.134/(3.40)	
42820-2243	2	.327/(8.30)	.823/(20.90)	.259/(6.58)	
42820-3213	3	.138/(3.50)	1.217/(30.90)	.071/(1.80)	
42820-3223	3	.201/(5.10)	1.217/(30.90)	.102/(2.60)	
42820-3233	3	.201/(5.10)	1.217/(30.90)	.134/(3.40)	
42820-3243	3	.327/(8.30)	1.217/(30.90)	.259/(6.58)	
42820-4213	4	.138/(3.50)	1.610/(40.90)	.071/(1.80)	
42820-4223	4	.201/(5.10)	1.610/(40.90)	.102/(2.60)	
42820-4233	4	.201/(5.10)	1.610/(40.90)	.134/(3.40)	
42820-4243	4	.327/(8.30)	1.610/(40.90)	.259/(6.58)	
42820-5213	5	.138/(3.50)	2.004/(50.90)	.071/(1.80)	
42820-5223	5	.201/(5.10)	2.004/(50.90)	.102/(2.60)	
42820-5233	5	.201/(5.10)	2.004/(50.90)	.134/(3.40)	
42820-5243	5	.327/(8.30)	2.004/(50.90)	.259/(6.58)	
42820-6213	6	.138/(3.50)	2.389/(60.90)	.071/(1.80)	
42820-6223	6	.201/(5.10)	2.389/(60.90)	.102/(2.60)	
42820-6233	6	.201/(5.10)	2.389/(60.90)	.134/(3.40)	
42820-6243	6	.327/(8.30)	2.389/(60.90)	.259/(6.58)	

OVERALL BRIGHT TIN

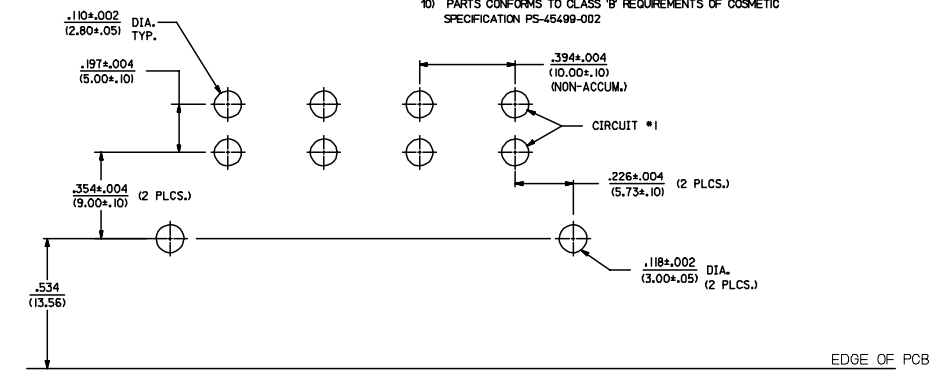
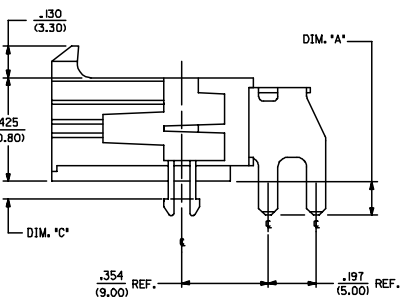
SELECT GOLD IN CONTACT AREA

SELECT MATTE TIN ON SOLDER TAILS

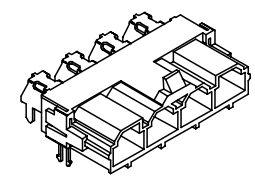


LEGEND:

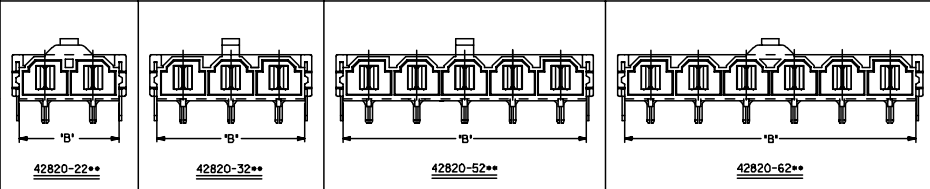
- A-42820 - (4) PLACES
- CIRCUIT SIZE (2-6)
- MOUNTING OPTION:
 - 1 = FLANGES (SEE DWG. SDA-42820-1**)
 - 2 = RETENTION CLIP
 - 3 = NO RETENTION CLIP
- P.C. BOARD THICKNESS:
 - 1 = .062 (1.57) NOMINAL
 - 2 = .093 (2.36) NOMINAL
 - 3 = .125 (3.18) NOMINAL
 - 4 = .250 (6.35) NOMINAL
- PLATING:
 - 2 OR 9 = OVERALL BRIGHT TIN OVER NICKEL
 - 3 = SELECT GOLD IN CONTACT AREA
 - SELECT MATTE TIN ON SOLDER TAILS OVER NICKEL



RECOMMENDED P.C. BOARD PLATED-THRU HOLE LAYOUT
(4 CKT. SHOWN FOR REF.)



HEADER WITH RT. ANGLE TERMINAL & CLIP
ISO VIEW



NOTES:

- D MATERIALS: HOUSING MATERIAL: 30% GLASS-FILLED NYLON 4/6, U.L. 94V-0, COLOR: BLACK. TERMINAL MATERIAL: ALLOY 151.
- FINISH: Z= .000100/(.00254) MIN. *TIN OVER .000050/(.00127) MIN. NICKEL. 3= .000030/(.00076) MIN. SELECT GOLD IN CONTACT AREA. .000100/(.00254) MIN. SELECT *TIN ON SOLDER TAILS OVER .000050/(.00127) MIN. NICKEL.
- * THE PRIMARY SHIPPING CARTON WILL BE LABELED "COMPLIANT TO ROHS DIRECTIVE 2002/95/EC AND ELY ANNEX II OF DIRECTIVE 2000/53/EC". CARTONS WITHOUT THIS LABEL MAY CONTAIN PRODUCT WITH TIN-LEAD.
- PRODUCT SPECIFICATION: PS-42815-001
- PACKAGING INFORMATION SEE MOLEX PACKAGING SPEC. PK-42820-910
- PART MATES WITH MOLEX RECEPTACLE *42816-***2 WITH TPA.
- PART IS DESIGNED IN METRIC.
- AN "X" IN FRONT OF THE ITEM NUMBER INDICATES THE PART IS NOT TOOLED.
- PARTS ARE NOT TO BE MATED OR UNMATED WHILE CIRCUITS ARE LIVE.
- WHEN USING OVERALL TIN PLATED TERMINALS: FOR APPLICATIONS INVOLVING VIBRATION AND/OR THERMAL CYCLING, MOLEX STRONGLY RECOMMENDS THE USE OF NYE LUBRICANT (NYGEL 760G) ON THE MATING SURFACES OF THE TERMINAL.
- PARTS CONFORMS TO CLASS B REQUIREMENTS OF COSMETIC SPECIFICATION PS-45499-002

ADD NOTES 3 & 10 EC NO: UCP2008-0453 2007/09/27 DRW:ALHAG 2007/09/28 CHK:LSCHMDT 2007/09/28 APPR:FSM:TH 2007/09/28	QUALITY SYMBOLS ▽=0 ▽=0	GENERAL TOLERANCES (UNLESS SPECIFIED) mm INCH 4 PLACES ±.--- ±.--- 3 PLACES ±.--- ±.--- 2 PLACES ±.25 ±.--- 1 PLACE ±.40 ±.--- ANGULAR ±1/2°		DIMENSION STYLE IN/MM	SCALE 4:1	DESIGN UNITS METRIC	THIRD ANGLE PROJECTION
		DRAWN BY DATE KSM 1/4/196		TITLE RIGHT ANGLE HEADER ASSEMBLY MINIFIT SR. SERIES			
		CHECKED BY DATE SF 1/4/196		MOLEX INCORPORATED			
		APPROVED BY DATE SF 1/4/196		MATERIAL NO. DOCUMENT NO. SHEET NO. SEE CHART SDA-42820-0002 1 OF 1			

DRAFT WHERE APPLICABLE MUST REMAIN WITHIN DIMENSIONS

THIS DRAWING CONTAINS INFORMATION THAT IS PROPRIETARY TO MOLEX INCORPORATED AND SHOULD NOT BE USED WITHOUT WRITTEN PERMISSION