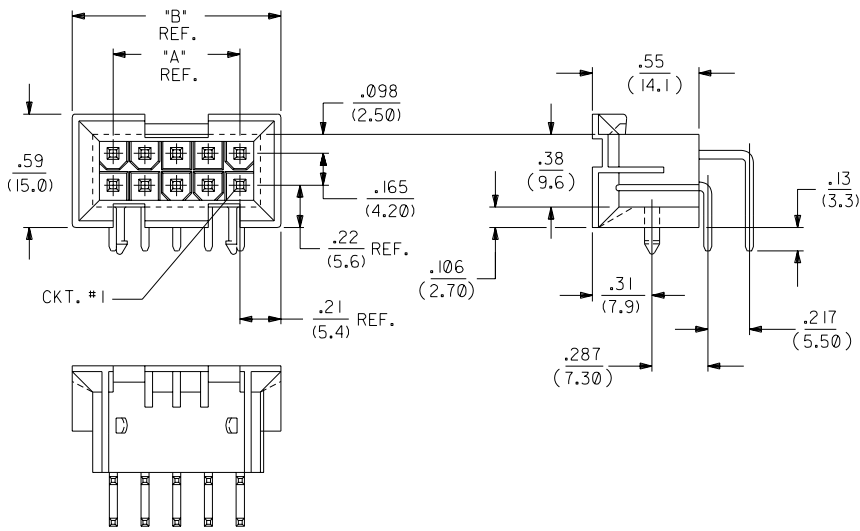
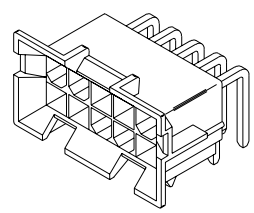


CIRCUIT SIZE	DIM. "A"	DIM. "B"
6	.331 (8.40)	.76 (19.2)
8	.496 (12.60)	.92 (23.4)
10	.661 (16.80)	1.09 (27.6)
12	.827 (21.00)	1.25 (31.8)
14	.992 (25.20)	1.42 (36.0)
16	1.157 (29.40)	1.58 (40.2)
18	1.323 (33.60)	1.75 (44.4)
20	1.488 (37.80)	1.91 (48.6)
22	1.654 (42.00)	2.08 (52.8)
24	1.819 (46.20)	2.24 (57.0)

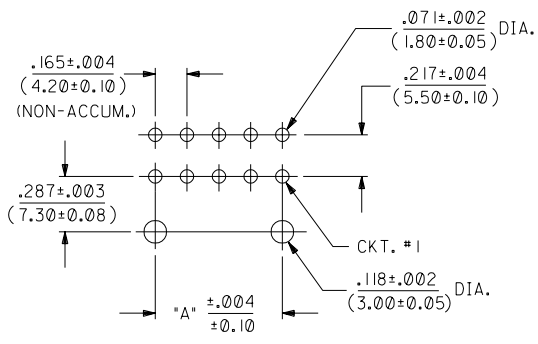


NOTES:

- HOUSING MATERIAL: "A" = NYLON 6/6, U.L. 94V-2
COLOR: NATURAL.
"B" = NYLON 6/6, U.L. 94V-0
COLOR: NATURAL.
- TERMINAL MATERIAL: BRASS, ALLOY 260.
- 4-24 CKT. PARTS MATE WITH MINI-FIT JR. RECEPTACLES #5557, #42385 AND #42474. 2 CKT. PART MATES WITH #42385 AND #42474 ONLY.
- PART ALLOWS FOR UP TO .100/(2.54) MISALIGNMENT WITH MATING RECEPTACLE IN ANY DIRECTION. SEE MATING CONNECTOR DRAWINGS FOR SPECIFIC ALLOWANCES.
- PART IS DESIGNED IN METRIC.
- TERMINAL PLATING:
 - .000100/(.00254) MIN. BRIGHT TIN OVER .000050/(.00127) MIN. NICKEL.
 - .000030/(.00076) MIN. GOLD OVER .000050/(.00127) MIN. NICKEL.
 - .000100/(.00254) MIN. MATTE TIN OVER .000050/(.00127) MIN. NICKEL.
 - .000050/(.00127) MIN. GOLD OVER .000050/(.00127) MIN. NICKEL.
- PRODUCT SPECIFICATION AND PROCESSING PARAMETERS: SEE PS-5556-002
- CONNECTOR ASSEMBLIES ARE NOT TO BE MATED OR UNMATED WHILE CIRCUITS ARE LIVE.
- A MAXIMUM TOLERANCE OF .050/(1.27) ALLOWS FOR 2 POINTS OF ELECTRICAL CONTACT. A MAXIMUM TOLERANCE OF .020/(.51) ALLOWS FOR 4 POINTS OF CONTACT.



A-42404-****



RECOMMENDED HOLE LAYOUT FOR .070/(1.78) MAX. THICK P.C. BOARD SHOWN FROM COMPONENT SIDE (SEE NOTE 5.)

--B2, --B4	42474--21, 5556-PBGS*P	94V-0	PHOS. BRZ.	GOLD
--A2, --A4	42474--11, 5556-PBGS*P	94V-2		
--B1, --B3	42474--21, 5556-PBS*P	94V-0	PHOS. BRZ.	TIN
--A1, --A3	42474--11, 5556-PBS*P	94V-2		
--B2, --B4	42474--21, 5556-GS*P	94V-0	BRASS	GOLD
--A2, --A4	42474--11, 5556-GS*P	94V-2		
--B1, --B3	42474--21, 5556-S*P	94V-0	PHOS. BRZ.	TIN
--A1, --A3	42474--11, 5556-S*P	94V-2		
--B2, --B4	A-42385--D2	94V-0	PHOS. BRZ.	GOLD
--A2, --A4	A-42385--C2	94V-2		
--B1, --B3	A-42385--D1	94V-0	PHOS. BRZ.	TIN
--A1, --A3	A-42385--C1	94V-2		
--B2, --B4	A-42385--B2	94V-0	BRASS	GOLD
--A2, --A4	A-42385--A2	94V-2		
--B1, --B3	A-42385--B1	94V-0	BRASS	TIN
--A1, --A3	A-42385--A1	94V-2		

R.A. HEADER	MATING CONNECTOR	HSG. MAT'L.	TERM. MAT'L.	PLATING
A-42404				

MATING CONNECTOR FEATURES

MFG.	SH.	REV.	LTR.	REVISIONS
3	AI			DEL. PT. #50-29-1676 ECN #UCP2005-0509 CSTEWART,09-01-04
2	AI			FINAL RELEASE ECN #UCP2005-0213 CSTEWART,07-27-04
1	AI			

DIMENSIONS SHOWN (METRIC) INCH		UNLESS OTHERWISE SPECIFIED TOLERANCES: ANGULAR ± .08°	
3 PLACE	±	INCH	METRIC
2 PLACE	±	.015	± 0.25
1 PLACE	---	±	0.38

DRAFT WHERE APPLICABLE MUST REMAIN WITHIN DIMENSIONS

DRWG. BY: CLS	CHK'D. BY: GEP	APPR. BY: YM	SCALE: 2:1
---------------	----------------	--------------	------------

FILE NAME: SEE SHEET 3	SHEET NO.: 1 OF 3	DATE: 07/27/04
------------------------	-------------------	----------------

TITLE: MINI-FIT B.M.I., 2-24 CKT. RIGHT ANGLE HEADER ASS'Y (BLIND MATE)

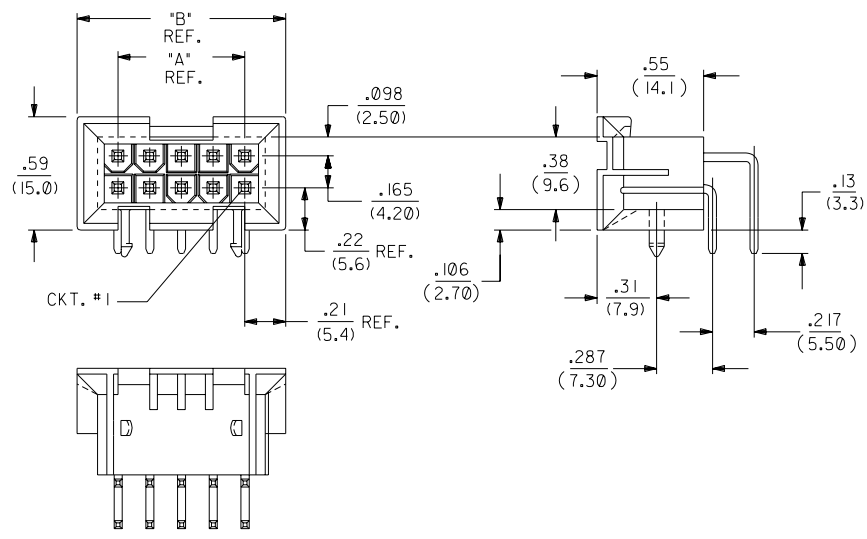
PART NO.: MOLEX INCORPORATED 60532 U.S.A.

DRWG. NO.: SD-42404-900

THIS DRAWING CONTAINS INFORMATION THAT IS PROPRIETARY TO MOLEX INC. AND SHOULD NOT BE USED WITHOUT WRITTEN PERMISSION.

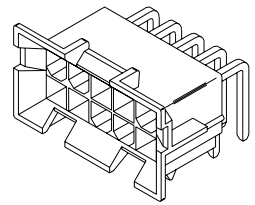
42404

CIRCUIT SIZE	DIM. "A"	DIM. "B"
6	.331 (8.40)	.76 (19.2)
8	.496 (12.60)	.92 (23.4)
10	.661 (16.80)	1.09 (27.6)
12	.827 (21.00)	1.25 (31.8)
14	.992 (25.20)	1.42 (36.0)
16	1.157 (29.40)	1.58 (40.2)
18	1.323 (33.60)	1.75 (44.4)
20	1.488 (37.80)	1.91 (48.6)
22	1.654 (42.00)	2.08 (52.8)
24	1.819 (46.20)	2.24 (57.0)

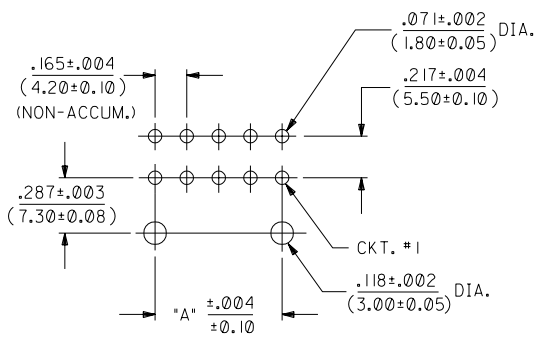


NOTES:

- HOUSING MATERIAL: "A" = NYLON 6/6, U.L. 94V-2 COLOR: NATURAL.
"B" = NYLON 6/6, U.L. 94V-0 COLOR: NATURAL.
- TERMINAL MATERIAL: BRASS, ALLOY 260.
- 4-24 CKT. PARTS MATE WITH MINI-FIT JR. RECEPTACLES #5557, #42385 AND #42474. 2 CKT. PART MATES WITH #42385 AND #42474 ONLY.
- PART ALLOWS FOR UP TO .100/(2.54) MISALIGNMENT WITH MATING RECEPTACLE IN ANY DIRECTION. SEE MATING CONNECTOR DRAWINGS FOR SPECIFIC ALLOWANCES.
- PART IS DESIGNED IN METRIC.
- TERMINAL PLATING:
1 = .000100/(.00254) MIN. BRIGHT TIN OVER .000050/(.00127) MIN. NICKEL.
2 = .000030/(.00076) MIN. GOLD OVER .000050/(.00127) MIN. NICKEL.
*3 = .000100/(.00254) MIN. MATTE TIN OVER .000050/(.00127) MIN. NICKEL.
4 = .000050/(.00127) MIN. GOLD OVER .000050/(.00127) MIN. NICKEL.
*THE PRIMARY SHIPPING CARTON WILL BE LABELED "COMPLIANT TO RoHS DIRECTIVE 2002/95/EC AND ELV ANNEX II OF DIRECTIVE 2000/53/EC." CARTONS WITHOUT THIS LABEL MAY CONTAIN PRODUCT WITH TIN-LEAD PLATING.
- PRODUCT SPECIFICATION AND PROCESSING PARAMETERS: SEE PS-5556-002
- CONNECTOR ASSEMBLIES ARE NOT TO BE MATED OR UNMATED WHILE CIRCUITS ARE LIVE.
- A MAXIMUM TOLERANCE OF .050/(1.27) ALLOWS FOR 2 POINTS OF ELECTRICAL CONTACT. A MAXIMUM TOLERANCE OF .020/(.51) ALLOWS FOR 4 POINTS OF CONTACT.

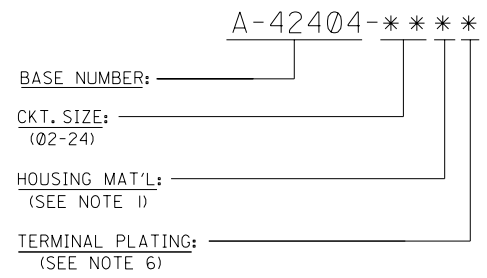


A-42404-****



RECOMMENDED HOLE LAYOUT FOR .070/(1.78) MAX. THICK P.C. BOARD (SEE NOTE 5.)

LEGEND:



Part No.	Part Description	Material	Plating
---B2, ---B4	42474-***21, 5556-PBGS*P	94V-0	GOLD
---A2, ---A4	42474-***11, 5556-PBGS*P	94V-2	
---B1, ---B3	42474-***21, 5556-PBS*P	94V-0	TIN
---A1, ---A3	42474-***11, 5556-PBS*P	94V-2	
---B2, ---B4	42474-***21, 5556-GS*P	94V-0	GOLD
---A2, ---A4	42474-***11, 5556-GS*P	94V-2	
---B1, ---B3	42474-***21, 5556-S*P	94V-0	TIN
---A1, ---A3	42474-***11, 5556-S*P	94V-2	
---B2, ---B4	A-42385-***D2	94V-0	GOLD
---A2, ---A4	A-42385-***C2	94V-2	
---B1, ---B3	A-42385-***D1	94V-0	TIN
---A1, ---A3	A-42385-***C1	94V-2	
---B2, ---B4	A-42385-***B2	94V-0	GOLD
---A2, ---A4	A-42385-***A2	94V-2	
---B1, ---B3	A-42385-***B1	94V-0	TIN
---A1, ---A3	A-42385-***A1	94V-2	

R.A. HEADER	MATING CONNECTOR	HSG. MAT'L.	TERM. MAT'L.	PLATING
A-42404				MATING CONNECTOR FEATURES

UNLESS OTHERWISE SPECIFIED TOLERANCES: ANGULAR * DMS

PLACE	INCH	METRIC
3 PLACE	± .010	---
2 PLACE	± .015	± 0.25
1 PLACE	---	± 0.38

DRAFT WHERE APPLICABLE MUST REMAIN WITHIN DIMENSIONS

DRWG. BY: RWK CHK'D. BY: RJF
APPR. BY: RAS SCALE: 2 : 1

FILE NAME: SA-42404X1.DGN

THIS DRAWING CONTAINS INFORMATION THAT IS PROPRIETARY TO MOLEX INC. AND SHOULD NOT BE USED WITHOUT WRITTEN PERMISSION.

REVISE ONLY ON CAD SYSTEM

TITLE: MINI-FIT B.M.I., 2-24 CKT. RIGHT ANGLE HEADER ASS'Y (BLIND MATE)

MOLEX INCORPORATED
1515E, ILL. 60532 U.S.A.

PART NO. SDA-42404-****
SHEET NO. 1 OF 3
DATE: 02/07/89

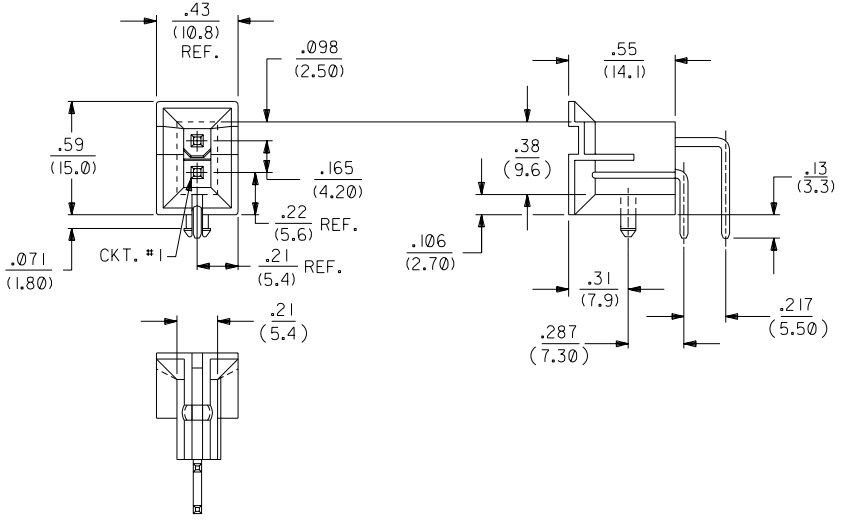
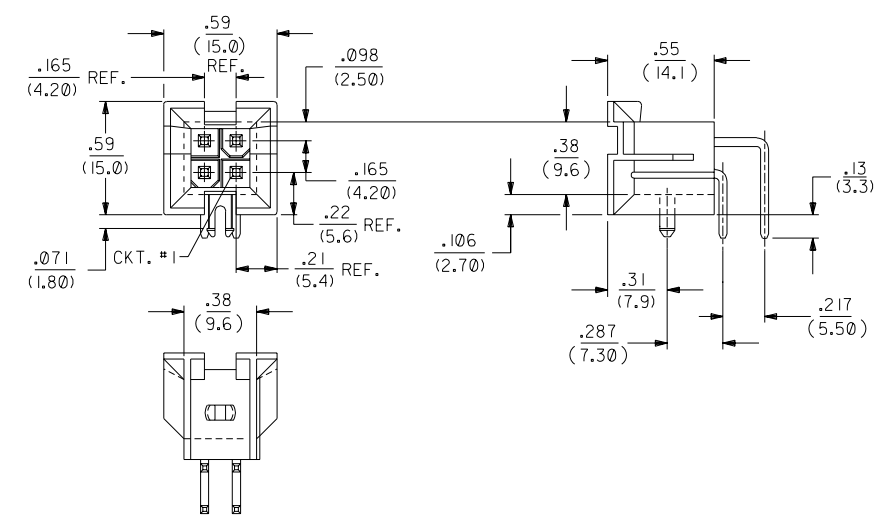
DRWG. NO. SEE SHEET 3

REVISIONS:

MFG. SH.	REV.	LTR.	REVISIONS
3	M3		ADDED 505 ASS'YS. PER ECN U60932
2	NI		REV. PICTORIALY ECN U21708
1	P		GEP 11-24-92 RJF

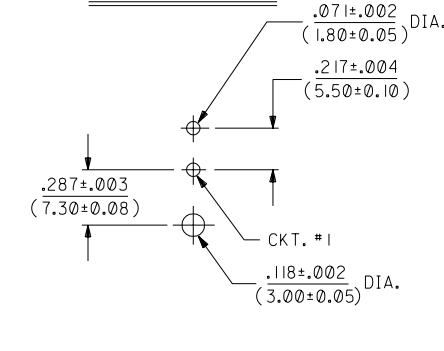
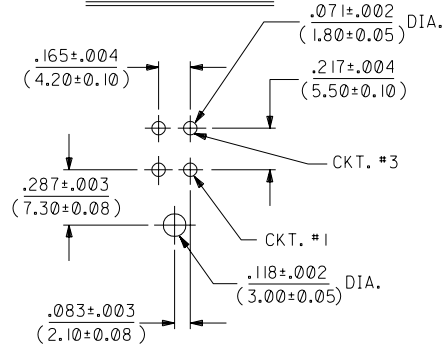
42404

A



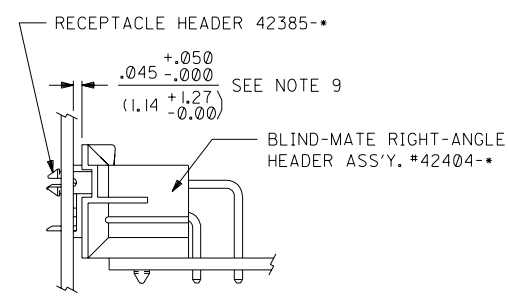
A-42404-04**

A-42404-02**



RECOMMENDED HOLE LAYOUT FOR .070/(1.78) MAX. THICK P.C. BOARD (SEE NOTE 5 SHT. 1)

RECOMMENDED HOLE LAYOUT FOR .070/(1.78) MAX. THICK P.C. BOARD (SEE NOTE 5 SHT. 1)



N1	SEE SHEET 1
M2	SEE SHEET 1
M1	SEE SHEET 1
M	SEE SHEET 1
L	SEE SHEET 1
K2	SEE SHEET 1
J	SEE SHEET 1
H	SEE SHEET 1
D	SEE SHEET 1
C	SEE SHEET 1
B	SEE SHEET 1

DIMENSIONS SHOWN (METRIC) INCH		▽ = 0		= 0		REVISE ONLY ON CAD SYSTEM	
UNLESS OTHERWISE SPECIFIED TOLERANCES: ANGULAR ± .005							
INCH		METRIC		INCH		METRIC	
3 PLACE	± .010	---	---	---	---	---	---
2 PLACE	± .015	± 0.25	---	---	---	---	---
1 PLACE	---	± 0.38	---	---	---	---	---
DRAFT WHERE APPLICABLE MUST REMAIN WITHIN DIMENSIONS							
DRWG. BY	RWK	CHK'D. BY	RJF	FILE NAME	SA42404X2	SHEET NO.	2
APP'D. BY	RAS	SCALE	2 : 1	DATE	02/07/89	U.S.A.	2
SEE SHEET 3				SDA-42404-****			
THIS DRAWING CONTAINS INFORMATION THAT IS PROPRIETARY TO MOLEX INC. AND SHOULD NOT BE USED WITHOUT WRITTEN PERMISSION.							

A	B	C	D	E	F	G	H	I	J	42404		1	2	3	4	5	6	7	8	9	10	11	12	13
										PLATING (NOTE 6)	HOUSING MATERIAL													
	PART NUMBER	ENG. NUMBER	CKT. SIZE	HOUSING MATERIAL	PLATING (NOTE 6)	PART NUMBER	ENG. NUMBER	CKT. SIZE	HOUSING MATERIAL	PLATING (NOTE 6)	42404													
	NOT TOOLED	A-42404-02A1	2	94V-2	TIN OVER NICKEL	NOT TOOLED	A-42404-02A3	2	94V-2	TIN-LEAD/NICKEL														
	I5-24-6040	-04A1	4			NOT TOOLED	-04A3	4																
	I5-24-6060	-06A1	6			NOT TOOLED	-06A3	6																
	NOT TOOLED	-08A1	8			NOT TOOLED	-08A3	8																
	I5-24-6100	-10A1	10			NOT TOOLED	-10A3	10																
	NOT TOOLED	-12A1	12			NOT TOOLED	-12A3	12																
	I5-24-6140	-14A1	14			NOT TOOLED	-14A3	14																
	NOT TOOLED	-16A1	16			NOT TOOLED	-16A3	16																
	I5-24-6180	-18A1	18			NOT TOOLED	-18A3	18																
	NOT TOOLED	-20A1	20			NOT TOOLED	-20A3	20																
	NOT TOOLED	-22A1	22			NOT TOOLED	-22A3	22																
	I5-24-6240	A-42404-24A1	24	94V-2	TIN OVER NICKEL	NOT TOOLED	A-42404-24A3	24	94V-2	TIN-LEAD/NICKEL														
	NOT TOOLED	A-42404-02A2	2	94V-2	30 M.I. GOLD	NOT TOOLED	A-42404-02A4	2	94V-2	50 M.I. GOLD														
	I5-24-9043	-04A2	4			I5-24-9046	-04A4	4																
	I5-24-9063	-06A2	6			NOT TOOLED	-06A4	6																
	NOT TOOLED	-08A2	8			NOT TOOLED	-08A4	8																
	I5-24-9103	-10A2	10			NOT TOOLED	-10A4	10																
	NOT TOOLED	-12A2	12			NOT TOOLED	-12A4	12																
	I5-24-9143	-14A2	14			NOT TOOLED	-14A4	14																
	NOT TOOLED	-16A2	16			NOT TOOLED	-16A4	16																
	I5-24-9183	-18A2	18			NOT TOOLED	-18A4	18																
	NOT TOOLED	-20A2	20			NOT TOOLED	-20A4	20																
	NOT TOOLED	-22A2	22			NOT TOOLED	-22A4	22																
	I5-24-9243	A-42404-24A2	24	94V-2	30 M.I. GOLD	NOT TOOLED	A-42404-24A4	24	94V-2	50 M.I. GOLD														
	NOT TOOLED	A-42404-02B1	2	94V-0	TIN OVER NICKEL	NOT TOOLED	A-42404-02B4	2	94V-0	50 M.I. GOLD														
	I5-24-9044	-04B1	4			NOT TOOLED	-04B4	4																
	I5-24-9064	-06B1	6			NOT TOOLED	-06B4	6																
	NOT TOOLED	-08B1	8			NOT TOOLED	-08B4	8																
	I5-24-9104	-10B1	10			NOT TOOLED	-10B4	10																
	NOT TOOLED	-12B1	12			NOT TOOLED	-12B4	12																
	I5-24-9144	-14B1	14			NOT TOOLED	-14B4	14																
	I5-24-9164	-16B1	16			NOT TOOLED	-16B4	16																
	I5-24-9184	-18B1	18			NOT TOOLED	-18B4	18																
	NOT TOOLED	-20B1	20			NOT TOOLED	-20B4	20																
	NOT TOOLED	-22B1	22			NOT TOOLED	-22B4	22																
	I5-24-9244	A-42404-24B1	24	94V-0	TIN OVER NICKEL	NOT TOOLED	A-42404-24B4	24	94V-0	50 M.I. GOLD														
	NOT TOOLED	A-42404-02B2	2	94V-0	30 M.I. GOLD	NOT TOOLED	A-42404-24B4	24	94V-0	50 M.I. GOLD														
	I5-24-9045	-04B2	4			NOT TOOLED	-04B4	4																
	I5-24-9065	-06B2	6			NOT TOOLED	-06B4	6																
	NOT TOOLED	-08B2	8			NOT TOOLED	-08B4	8																
	I5-24-9105	-10B2	10			NOT TOOLED	-10B4	10																
	NOT TOOLED	-12B2	12			NOT TOOLED	-12B4	12																
	I5-24-9145	-14B2	14			NOT TOOLED	-14B4	14																
	I5-24-9165	-16B2	16			NOT TOOLED	-16B4	16																
	I5-24-9185	-18B2	18			NOT TOOLED	-18B4	18																
	NOT TOOLED	-20B2	20			NOT TOOLED	-20B4	20																
	NOT TOOLED	-22B2	22			NOT TOOLED	-22B4	22																
	I5-24-9245	A-42404-24B2	24	94V-0	30 M.I. GOLD	NOT TOOLED	A-42404-24B4	24	94V-0	50 M.I. GOLD														

DIMENSIONS SHOWN (METRIC) INCH
 UNLESS OTHERWISE SPECIFIED
 TOLERANCES: ANGLES .04° ± .12°
 INCH METRIC
 3 PLACE ± ---
 2 PLACE ± ±
 1 PLACE --- ±
 DRAFT WHERE APPLICABLE MUST REMAIN WITHIN DIMENSIONS
 DRWG. BY: RJK
 APP'D. BY: RAS
 DWG. NO.: RKF
 SCALE: :
 FILE NAME: S442404X3.DGN
 THIS DRAWING CONTAINS INFORMATION THAT IS PROPRIETARY TO MOLEX INC. AND SHOULD NOT BE USED WITHOUT WRITTEN PERMISSION.

TITLE: MINI-FIT JR., 2 THRU 24 CKT. RIGHT ANGLE HEADER ASS'Y (BLIND-MATE)
 REVISE ONLY ON CAD SYSTEM
 MOLEX INCORPORATED LITTLE ROCK, AR 72211 U.S.A.
 SHEET NO. 3 DATE 02/08/89
 PART NO. SEE CHART
 DRWG. NO. SDA-42404-****
 DIV. CP