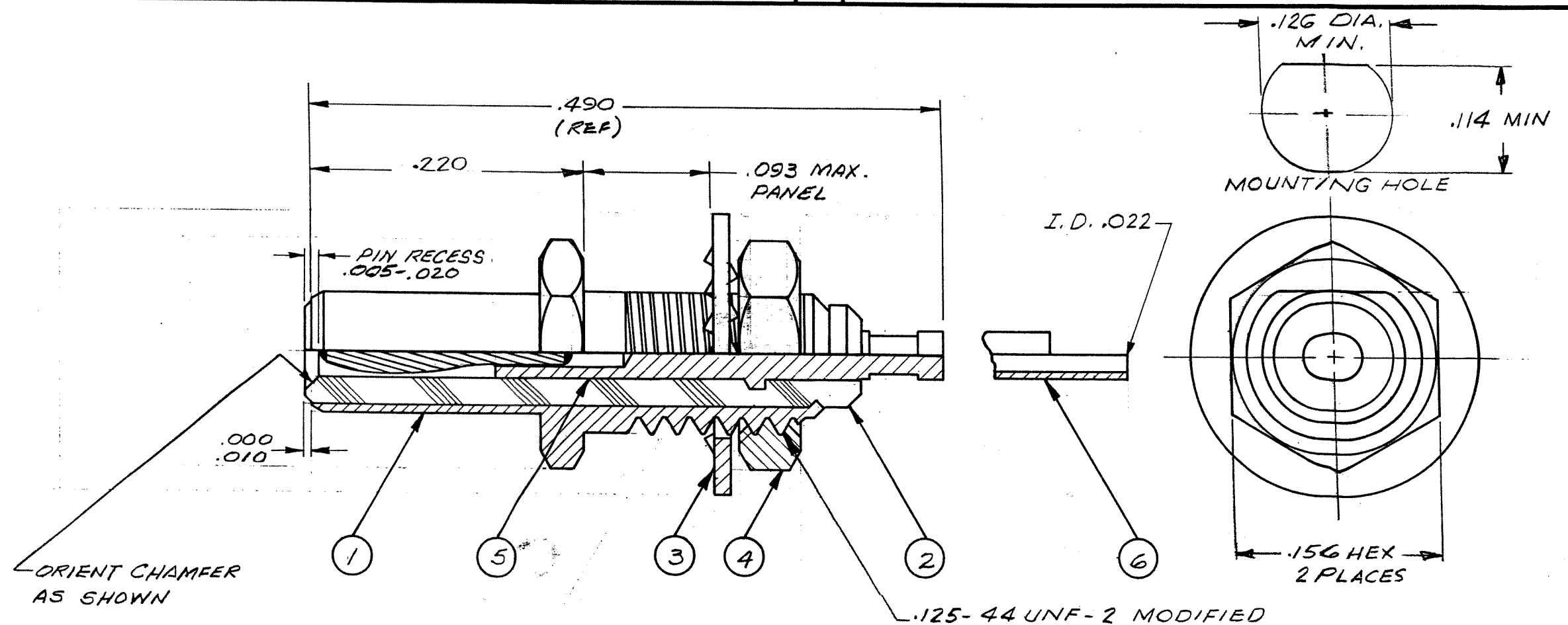



These drawings and specifications are the property of Microdot Inc., are issued in strict confidence and shall not be divulged, be reproduced or copied, or used as the basis for the manufacture or sale of any article without written permission of Microdot Inc.



TE P/N	MICRODOT P/N
1-1532138-8	141-1002-0001
2-1532006-1	141-1002-0002
2-1532006-2	141-1002-0003

1	1		3-1532071-8	SOLDER POT CONTACT	COPPER ALLOY	6
		1	3-1532071-7	TURRET CONTACT	COPPER ALLOY	5
1	1	1	5-1532069-2	NUT	BRASS PER QQ-B-626	4
1	1	1	5-1532069-4	LOCKWASHER	# 425 BRONZE ALLOY	3
1	1	1	8-1532069-0	INSULATOR-RECEPTACLE	TEFLON PER L-P-403	2
1	1	1	7-1532069-9	HOUSING-RECEPTACLE	BRASS PER QQ-B-626	1
-3	-2	-1	PART NO.	NOMENCLATURE	MAT'L & SPEC	ITEM

F1		UPDATE PER ECO-10-0XXXXX		12 AUG 10	MJS	STANDARD TOLERANCES UNLESS OTHERWISE SPECIFIED DEC. $\pm$ .010 FRAC. $\pm$ _____ ANGLES $\pm$ _____ ECCENTRICITY MAX. T.I.R. _____ HOLE DIA. $\pm$ _____ SURFACE ROUGHNESS MICRO INCHES _____ THREADS TO MIL-S-7742 COMMERCIAL TOLERANCES APPLY TO STOCK DIMENSIONS		 <b>MALCO</b> A MICRODOT COMPANY, INC. 306 PASADENA AVE., SO. PASADENA, CAL.		SURFACE TREATMENT NOTED	
E		28871	ITEM 3 MAT'L WAS: PHOS. BRONZE PER QQ-B-750 LOCKWASHER O.D WAS .220 DIA.	7/14/66	156	MATERIAL NOTED		APP APP		CHECKED BY	
D		25232	UPDATE DWG INFORMATION	7/14/66	156	FRONT MOUNT		PERD CODE 746		DRAWN BY	
C		15730	ADD. NOTE 3	7/14/66	156	RECEPT-SLIDE-ON 141-1002-000X		SCALE 10/1		DATE 7/14/66	
B		8373	DIM. 3/16 WAS 5/32	7/14/66	156			DRAWING NUMBER 1532150-4		F1	
A		7075	RELEASE FOR PROO.	7/14/66	156			CODE C DM			
NEXT ASSEMBLIES		LET	ECO	REVISION	DESCRIPTION	BY	DATE	APP			

2. MATES WITH ALL LEPRACON OR 142 SLIDE-ON SERIES PLUGS.  
1. ALL METALLIC PARTS ARE GOLD PLATED PER MIL-G-45204 TYPE II, GRADE C, CLASS I.

NOTES: UNLESS OTHERWISE SPECIFIED

# Mouser Electronics

Authorized Distributor

Click to View Pricing, Inventory, Delivery & Lifecycle Information:

[TE Connectivity:](#)

[141-1002-0002](#)