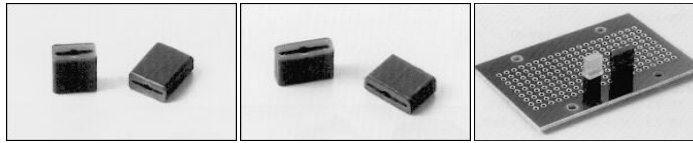




product search

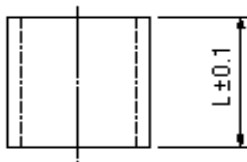
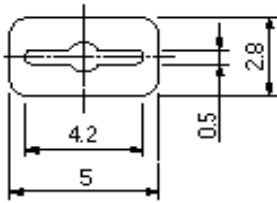
products | support | company | contact us

THROUGH HOLE TECHNOLOGY | SURFACE MOUNT TECHNOLOGY



LG, LH Series

all categories > through hole technology > led spacer > rectangular type, for bi-lead and tri-lead LED



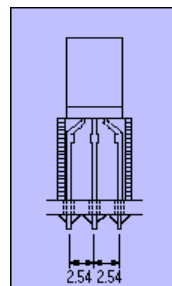
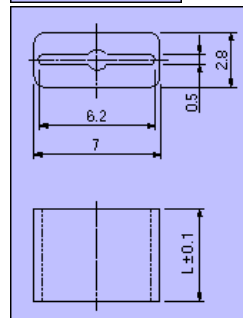
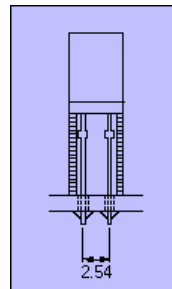
Rectangular type, For Bi-lead and Tri-lead LED

- LH series are for Bi-Lead and Tri-Lead LED.
- Color....Black
- Material....Thermo plastic elastomers (UL94V-0)
- Temperature Range (Degrees Celsius)....V

[Save To Favorites](#)
[Download Catalog](#)

>> request quote / information | >> download specs

N/O	H (mm)
LG-1	1
LG-1.5	1.5
LG-2	2
LG-2.5	2.5
LG-3	3
LG-3.5	3.5
LG-4	4
LG-4.5	4.5
LG-5	5
LG-5.5	5.5
LG-6	6
LG-6.5	6.5
LG-7	7
LG-7.5	7.5
LG-8	8
LG-8.5	8.5
LG-9	9
LG-9.5	9.5
LG-10	10
LG-11	11
LG-12	12



LG-13	13
LG-14	14
LG-15	15
LG-16	16
LG-17	17
LG-18	18
LG-19	19
LG-20	20
LH-1	1
LH-1.5	1.5
LH-2	2
LH-2.5	2.5
LH-3	3
LH-3.5	3.5
LH-4	4
LH-4.5	4.5
LH-5	5
LH-5.5	5.5
LH-6	6
LH-6.5	6.5
LH-7	7
LH-7.5	7.5
LH-8	8
LH-8.5	8.5
LH-9	9
LH-9.5	9.5
LH-10	10
LH-11	11
LH-12	12
LH-13	13
LH-14	14
LH-15	15
LH-16	16
LH-17	17
LH-18	18
LH-19	19
LH-20	20