

# Right-angle through hole type male connector for PCB PCR-E( )LMD( )+

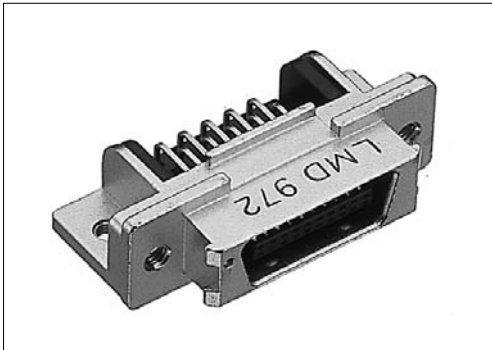
1.27 mm pitch connector

For PCB

Right-angle Through hole

EMI-filtered

RoHS

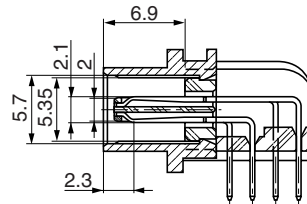
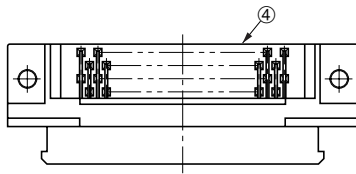


● Configuration of product Part No.

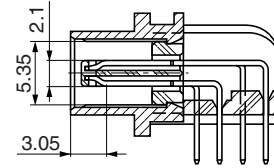
## PCR-E ( ) LMD ( )+

① ② ③ ④

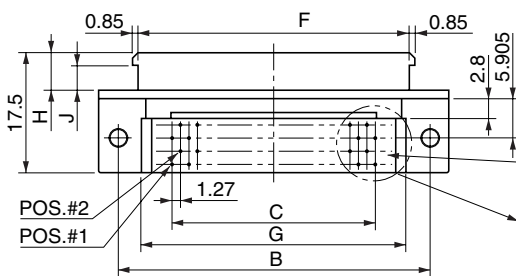
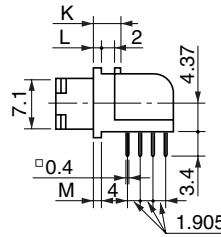
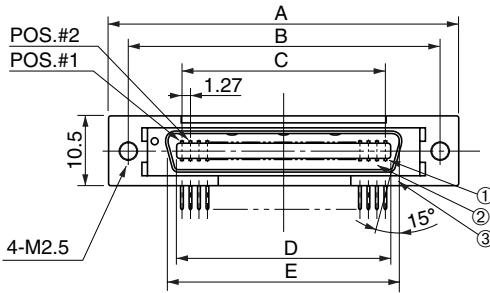
- ① Series name
- ② No. of contacts: 20, 28, 36, 50, 68 or 96
- ③ Type of connector  
LMD: Right-angle through hole type, male connector
- ④ Thickness of panel  
Blank: t = 1.6 mm MAX.  
A : t = 2.1 mm MAX.  
B : t = 2.1 mm MAX., electrostatic noise resistant (ESD resistant)  
C : t = 1.6 mm MAX., electrostatic noise resistant (ESD resistant)



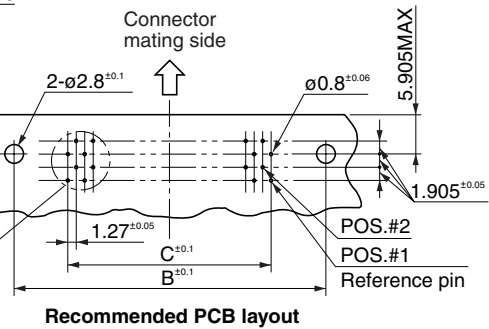
Form I contacts



Form II contacts



Except 50-contact connector



Recommended PCB layout

● Dimensions

Part No.	A	B	C	D	E	F	G
PCR-E20LMD( )+	33.40	27.40	11.43	13.20	16.45	21.60	20.23
PCR-E28LMD( )+	38.48	32.48	16.51	18.28	21.53	26.68	25.31
PCR-E36LMD( )+	43.56	37.56	21.59	23.36	26.61	31.76	30.39
PCR-E50LMD( )+	52.45	46.45	30.48	32.25	35.50	40.65	39.28
PCR-E68LMD( )+	63.88	57.88	41.91	43.68	46.93	52.08	50.71
PCR-E96LMD( )+	81.66	75.66	59.69	61.46	64.71	69.86	68.49

● Components

①	Contacts
②	Insulator
③	Shell
④	Bracket

Part No.	H	J	K	L	M	Contact length	Panel thickness
PCR-E( )LMD+	5.4	3.9	4.1	1.3	1.3	Refer to Form I contacts	1.6mm MAX.
PCR-E( )LMDA+	5.9	4.4	3.6	0.8	0.8	Refer to Form II contacts	2.1mm MAX.
PCR-E( )LMDB+							1.6mm MAX.
PCR-E( )LMDC+	5.4	3.9	4.1	1.3	1.3		1.6mm MAX.

Mating connectors: PCR series cable-side IDC type female connector

PCR series cable-side soldering type female connector

Accessories: Dust-proof cap, PCS-E( )C