

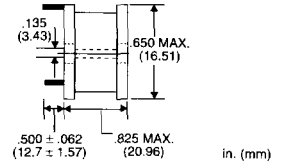
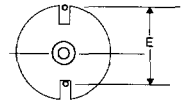
POWER INDUCTORS - LEADED

GOWANDA

DB1 High Current Power Line Chokes



PART NUMBER	INDUCTANCE μH @ 1 kHz	DCR OHMS (MAX)	CURRENT RATING AMPS DC	E DIMENSIONS INCHES	LEAD DIAMETER
DB1-221	2.2 ± 20%	.004	11.8	.500	.0508
DB1-331	3.3 ± 20%	.005	10.5	.500	.0508
DB1-391	3.9 ± 20%	.006	9.6	.500	.0508
DB1-471	4.7 ± 20%	.007	8.9	.500	.0508
DB1-561	5.6 ± 20%	.007	8.9	.500	.0508
DB1-681	6.8 ± 20%	.007	8.9	.500	.0508
DB1-821	8.2 ± 20%	.008	8.3	.500	.0508
DB1-102	10 ± 10%	.009	7.9	.500	.0508
DB1-122	12 ± 10%	.010	7.5	.500	.0508
DB1-152	15 ± 10%	.011	7.1	.500	.0453
DB1-182	18 ± 10%	.015	6.1	.500	.0453
DB1-222	22 ± 10%	.017	5.7	.480	.0403
DB1-272	27 ± 10%	.025	4.7	.480	.0359
DB1-332	33 ± 10%	.033	4.1	.480	.0359
DB1-392	39 ± 10%	.040	3.7	.480	.0320
DB1-472	47 ± 10%	.050	3.3	.480	.0320
DB1-562	56 ± 10%	.050	3.3	.480	.0320
DB1-602	60 ± 10%	.060	3.0	.480	.0320
DB1-682	68 ± 10%	.063	3.0	.480	.0285
DB1-822	82 ± 10%	.065	2.9	.500	.0285
DB1-103	100 ± 10%	.072	2.8	.500	.0285
DB1-123	120 ± 10%	.100	2.4	.470	.0253
DB1-153	150 ± 10%	.140	2.0	.470	.0253
DB1-183	180 ± 10%	.150	1.9	.470	.0253
DB1-223	220 ± 10%	.172	1.8	.470	.0253
DB1-273	270 ± 10%	.240	1.5	.470	.0201
DB1-333	330 ± 10%	.262	1.5	.470	.0201
DB1-393	390 ± 10%	.300	1.4	.470	.0201
DB1-473	470 ± 10%	.396	1.2	.470	.0201
DB1-563	560 ± 10%	.430	1.1	.470	.0179



NOTES:

- Operating temperature -55°C to +125°C
- Leads tinned to within .062 of body

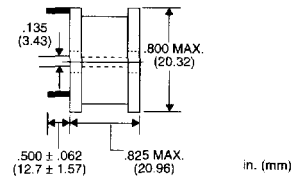
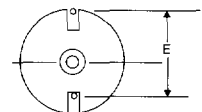
PACKAGING SPECS:

Bulk only.

DB2 High Current Power Line Chokes



PART NUMBER	INDUCTANCE μH @ 1 kHz	DCR OHMS (MAX)	CURRENT RATING AMPS DC	E DIMENSIONS INCHES	LEAD DIAMETER
DB2-331	3.3 ± 20%	.003	15.1	.650	.0720
DB2-391	3.9 ± 20%	.003	15.1	.650	.0720
DB2-471	4.7 ± 20%	.003	15.1	.650	.0720
DB2-561	5.6 ± 20%	.003	15.1	.650	.0720
DB2-681	6.8 ± 20%	.004	13.1	.675	.0720
DB2-821	8.2 ± 20%	.004	13.1	.675	.0720
DB2-102	10 ± 10%	.005	11.7	.630	.0641
DB2-122	12 ± 10%	.007	9.9	.630	.0571
DB2-152	15 ± 10%	.009	8.7	.630	.0508
DB2-182	18 ± 10%	.013	7.2	.630	.0508
DB2-222	22 ± 10%	.014	7.0	.600	.0453
DB2-272	27 ± 10%	.020	5.8	.600	.0403
DB2-332	33 ± 10%	.022	5.6	.600	.0403
DB2-392	39 ± 10%	.026	5.1	.600	.0403
DB2-472	47 ± 10%	.026	5.1	.600	.0403
DB2-562	56 ± 10%	.031	4.7	.600	.0403
DB2-682	68 ± 10%	.036	4.4	.600	.0403
DB2-822	82 ± 10%	.044	3.9	.600	.0359
DB2-103	100 ± 10%	.060	3.4	.580	.0320
DB2-123	120 ± 10%	.067	3.2	.580	.0320
DB2-153	150 ± 10%	.075	3.0	.580	.0320
DB2-183	180 ± 10%	.090	2.8	.580	.0320
DB2-193	190 ± 10%	.110	2.5	.580	.0285
DB2-223	220 ± 10%	.114	2.4	.580	.0285
DB2-253	250 ± 10%	.135	2.2	.580	.0285
DB2-273	270 ± 10%	.155	2.1	.580	.0285
DB2-333	330 ± 10%	.175	2.0	.600	.0285
DB2-393	390 ± 10%	.195	1.9	.600	.0253
DB2-473	470 ± 10%	.209	1.8	.600	.0253
DB2-563	560 ± 10%	.300	1.5	.570	.0226
DB2-683	680 ± 10%	.399	1.3	.570	.0226
DB2-823	820 ± 10%	.445	1.2	.570	.0201
DB2-104	1000 ± 10%	.484	1.2	.570	.0201
DB2-124	1200 ± 10%	.550	1.1	.570	.0201
DB2-154	1500 ± 10%	.746	.96	.570	.0179
DB2-184	1800 ± 10%	.985	.83	.570	.0159
DB2-224	2200 ± 10%	1.149	.77	.570	.0159



NOTES:

- Operating temperature -55°C to +125°C
- Leads tinned to within .062 of body

PACKAGING SPECS:

Bulk only.

GOWANDA
www.gowanda.com

One Magnetics Pkwy, Gowanda, NY 14070 • (t) 716-532-2234 • (f) 716-532-2702 • sales@gowanda.com