



Product Series Code	GSBS	Brand	GOTREND
File Version	GSBS-V2R1	Editor	Robert
Established Date	2000.09.26	Description	SMD Drum Choke with Shielding
Latest Edit Date	2005.08.15	Pages	Page : 2

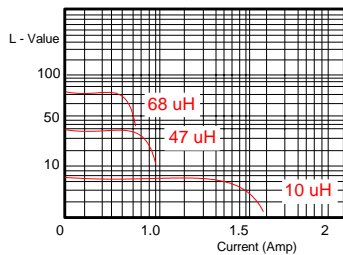
Features & Application:

- * Drum Choke with Shielding for good in EMI performance.
- * Fit for power line & signal line circuit
- * To help you go pass the CE/FCC standard.
- * Mobil Device / Handheld Device / LowProfile Device / Panel...

Part No Example:

GSBS 73 - P - 220 M	1. GOTREND Series : GSBS
-----	2. Size Code LxWxH: 73=7x7x3 mm
1 2 3 4 5	3. P=Pb free < 1000ppm
	4. [L] Value : 220=22uH
	5. Tolerance, K=+/-10%, M=+/-20%

Ex:GSBS-73 L v.s Rated D.C Current Curve



Test Equipment :

- * HP4284A, HP42841A- L, IDC, Q, RDC
- * HP8753D NETWORK ANALYZER- SRF

Standard Atmospheric Conditions:

Ambient Temp:20+/-15°C

Relative Humidity:65+/-20%

If there may be any doubt on the result, measurement shall be made within the following limits:

Ambient Temp:25+/-5°C

Relative Humidity:75+/-10%

Operating & Storage Condition:

OPERATING TEMP:-40~+85°C

STORAGE TEMP:-40~+85°C

STORAGE LIFE TIME: 12 MONTH @25°C , RH 65%

Attention & Caution:

Please avoid following matters:

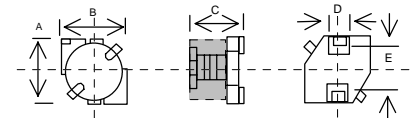
- * Splashing water or salt water
- * Toxic Gas (Hydrogen sulfide, Sulfurous acid, Chlorine, Ammonia)
- * Vibrations or shocks which exceed the specified condition
- * Dew condenses
- * Please be careful for the stress to this product by board flexure or something after the mounting.

Product Structure

SMD	DIP	Shield	Unshield		
2005 RoHS Compliant - SGS Certified Result					
鉛 Pb	鎘 Cd	汞 Hg	六價鉻 Cr+6	溴化聯苯 PBB	溴化聯苯 醚PBDE
<1000ppm	ND	ND	ND	ND	ND

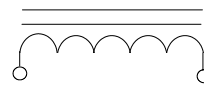
Dimensions: [mm]

MECHANICAL ASSEMBLY:

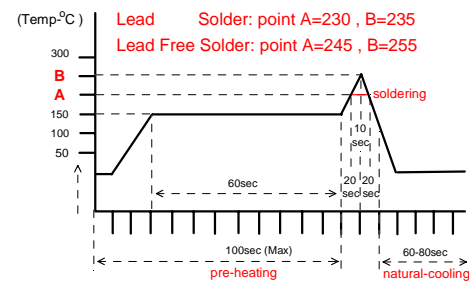


Type	A (max)	B (max)	C (max)	D (+/-0.2)	E (Ref.)
63	6.2	6.2	3.0	1.8	3.0
73	7.4	7.4	3.5	2.0	5.4
74	7.4	7.4	4.5	2.0	5.4
104	10.4	10.4	4.8	3.0	6.5
126	12.8	12.8	5.8	3.0	8.6
127	12.8	12.8	6.8	3.0	8.6
128	12.8	12.8	7.8	3.0	8.6

SCHEMATIC:



Recommand Reflow Curve (TIME:Second)



Notice: Iron Soldering: 3 Seconds Max. @260 °C



Product Series Code	GSBS	Brand	GOTREND
File Version	GSBS-V2R1	Editor	Robert
Established Date	2000.09.26	Description	SMD Drum Choke with Shielding
Latest Edit Date	2005.08.15	Pages	Page : 3

Part No.	L - Value (uH)	Test Freq. (KHz)0.25V	DCR (ohm) max.	IDC (mA) max
GSBS-63-100	10.0	1	0.150	1.10
GSBS-63-120	12.0	1	0.200	1.00
GSBS-63-150	15.0	1	0.230	0.90
GSBS-63-180	18.0	1	0.270	0.80
GSBS-63-220	22.0	1	0.340	0.74
GSBS-63-270	27.0	1	0.380	0.66
GSBS-63-330	33.0	1	0.450	0.59
GSBS-63-390	39.0	1	0.490	0.54
GSBS-63-470	47.0	1	0.690	0.50
GSBS-63-560	56.0	1	0.780	0.46
GSBS-63-680	68.0	1	1.070	0.42
GSBS-63-820	82.0	1	1.210	0.38
GSBS-63-101	100.0	1	1.390	0.34
GSBS-63-121	120.0	1	1.900	0.31
GSBS-63-151	150.0	1	2.180	0.28
GSBS-63-181	180.0	1	2.770	0.26
GSBS-63-221	220.0	1	3.120	0.23
GSBS-63-271	270.0	1	4.380	0.22
GSBS-63-331	330.0	1	4.940	0.19

Tolerance Code: K=± 10%,M=± 20%

Part No.	L - Value (uH)	Test Freq. (KHz)0.25V	DCR (ohm) max.	IDC (mA) max
GSBS-73-1R0	1.0	100	0.019	3.12
GSBS-73-1R5	1.5	100	0.023	2.85
GSBS-73-2R2	2.2	100	0.028	2.66
GSBS-73-3R3	3.3	100	0.035	2.26
GSBS-73-4R7	4.7	100	0.043	1.96
GSBS-73-6R8	6.8	100	0.055	1.76
GSBS-73-100	10.0	1	0.080	1.34
GSBS-73-120	12.0	1	0.090	1.23
GSBS-73-150	15.0	1	0.120	1.09
GSBS-73-180	18.0	1	0.130	0.99
GSBS-73-220	22.0	1	0.150	0.90
GSBS-73-270	27.0	1	0.210	0.81
GSBS-73-330	33.0	1	0.250	0.72
GSBS-73-390	39.0	1	0.310	0.67
GSBS-73-470	47.0	1	0.350	0.60
GSBS-73-560	56.0	1	0.430	0.55
GSBS-73-680	68.0	1	0.520	0.50
GSBS-73-820	82.0	1	0.600	0.46
GSBS-73-101	100.0	1	0.790	0.41

Tolerance Code: K=± 10%,M=± 20%



Product Series Code	GSBS	Brand	GOTREND
File Version	GSBS-V2R1	Editor	Robert
Established Date	2000.09.26	Description	SMD Drum Choke with Shielding
Latest Edit Date	2005.08.15	Pages	Page : 4

Part No.	L - Value (uH)	Test Freq. (KHz)0.25V	DCR (ohm) max.	IDC (mA) max
GSBS-74-1R0	1.0	100	0.023	2.880
GSBS-74-1R5	1.5	100	0.027	2.610
GSBS-74-2R2	2.2	100	0.030	2.460
GSBS-74-3R3	3.3	100	0.035	2.280
GSBS-74-4R7	4.7	100	0.041	2.080
GSBS-74-6R8	6.8	100	0.047	1.940
GSBS-74-100	10.0	1	0.050	1.680
GSBS-74-120	12.0	1	0.070	1.540
GSBS-74-150	15.0	1	0.080	1.390
GSBS-74-180	18.0	1	0.090	1.260
GSBS-74-220	22.0	1	0.110	1.130
GSBS-74-270	27.0	1	0.150	1.020
GSBS-74-330	33.0	1	0.170	0.840
GSBS-74-390	39.0	1	0.180	0.800
GSBS-74-470	47.0	1	0.200	0.760
GSBS-74-560	56.0	1	0.280	0.640
GSBS-74-680	68.0	1	0.320	0.600
GSBS-74-820	82.0	1	0.350	0.570
GSBS-74-101	100.0	1	0.400	0.500
GSBS-74-221	220.0	1	0.620	0.330
GSBS-74-331	330.0	1	0.940	0.270

Tolerance Code: K=± 10%,M=± 20%

Part No.	L - Value (uH)	Test Freq. (KHz)0.25V	DCR (ohm) max.	IDC (mA) max
GSBS-104-100	10.0	1	0.364	3.00
GSBS-104-150	15.0	1	0.047	2.40
GSBS-104-220	22.0	1	0.059	2.10
GSBS-104-330	33.0	1	0.082	1.60
GSBS-104-470	47.0	1	0.100	1.40
GSBS-104-680	68.0	1	0.140	1.20
GSBS-104-101	100.0	1	0.200	1.00
GSBS-104-151	150.0	1	0.350	0.79
GSBS-104-221	220.0	1	0.470	0.65
GSBS-104-331	330.0	1	0.680	0.54
GSBS-104-471	470.0	1	1.030	0.47
GSBS-104-681	680.0	1	1.600	0.38
GSBS-104-102	1000.0	1	2.800	0.32
GSBS-104-152	1500.0	1	3.400	0.22

Tolerance Code: M=± 20%



Product Series Code	GSBS	Brand	GOTREND
File Version	GSBS-V2R1	Editor	Robert
Established Date	2000.09.26	Description	SMD Drum Choke with Shielding
Latest Edit Date	2005.08.15	Pages	Page : 5

Part No.	L - Value (uH)	Test Freq. (KHz),0.25V	DCR (ohm) max.	IDC (mA) max
GSBS-126-6R0	6.0	100	0.016	3.60
GSBS-126-100	10.0	1	0.022	3.40
GSBS-126-150	15.0	1	0.026	2.80
GSBS-126-220	22.0	1	0.034	2.30
GSBS-126-330	33.0	1	0.042	1.90
GSBS-126-470	47.0	1	0.062	1.60
GSBS-126-680	68.0	1	0.083	1.30
GSBS-126-101	100.0	1	0.117	1.10
GSBS-126-151	150.0	1	0.190	0.88
GSBS-126-221	220.0	1	0.270	0.72
GSBS-126-331	330.0	1	0.410	0.59
GSBS-126-471	470.0	1	0.520	0.49
GSBS-126-681	680.0	1	0.760	0.43
GSBS-126-102	1000.0	1	1.120	0.34
GSBS-126-152	1500.0	1	1.730	0.29

Tolerance Code: 6.0uH N=± 30%
10.0~1500uH M=± 20%

Part No.	L - Value (uH)	Test Freq. (KHz),0.25V	DCR (ohm) max.	IDC (mA) max
GSBS-127-2R0	2.0	100	0.012	10.0
GSBS-127-4R2	4.2	100	0.015	7.3
GSBS-127-7R0	7.0	100	0.018	5.7
GSBS-127-100	10.0	1	0.020	5.0
GSBS-127-150	15.0	1	0.024	4.2
GSBS-127-220	22.0	1	0.032	3.5
GSBS-127-330	33.0	1	0.041	2.8
GSBS-127-470	47.0	1	0.058	2.4
GSBS-127-680	68.0	1	0.079	2.0
GSBS-127-101	100.0	1	0.123	1.6
GSBS-127-221	220.0	1	0.273	1.0

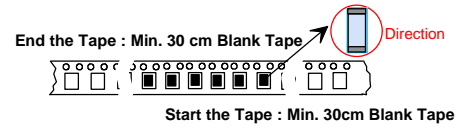
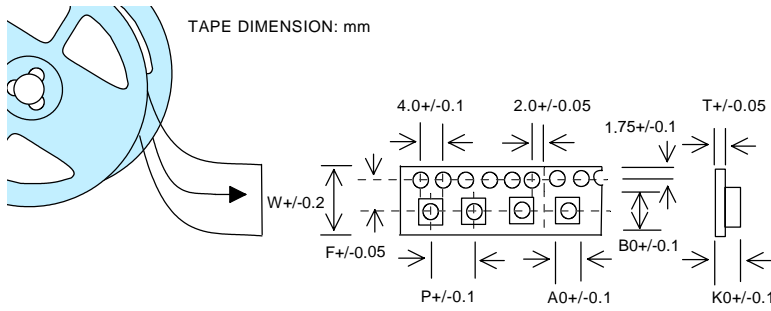
Tolerance Code: 2~ 7uH N=± 30%
10~220uH M=± 20%

Part No.	L - Value (uH)	Test Freq. (MHz)	DCR (ohm) max.	IDC (mA) max
GSBS-128-1R2	1.2	0.001	0.0068	13.0
GSBS-128-2R7	2.7	0.001	0.0094	10.0
GSBS-128-3R9	3.9	0.001	0.0104	9.0
GSBS-128-5R6	5.6	0.001	0.0116	7.8
GSBS-128-6R8	6.8	0.001	0.0131	7.2
GSBS-128-100	10.0	0.001	0.0156	5.5
GSBS-128-150	15.0	0.001	0.0184	4.7
GSBS-128-220	22.0	0.001	0.0263	4.0
GSBS-128-330	33.0	0.001	0.0395	3.2
GSBS-128-470	47.0	0.001	0.0528	2.7
GSBS-128-680	68.0	0.001	0.0778	2.0
GSBS-128-101	100.0	0.001	0.1250	1.9
GSBS-128-151	150.0	0.001	0.1750	1.5
GSBS-128-221	220.0	0.001	0.2580	1.3

Tolerance Code: 1.2~6.8uH =N± 30%
10~220uH =M± 20%



Product Series Code	GSBS	Brand	GOTREND
File Version	GSBS-V2R1	Editor	Robert
Established Date	2000.09.26	Description	SMD Drum Choke with Shielding
Latest Edit Date	2005.08.15	Pages	Page : 6



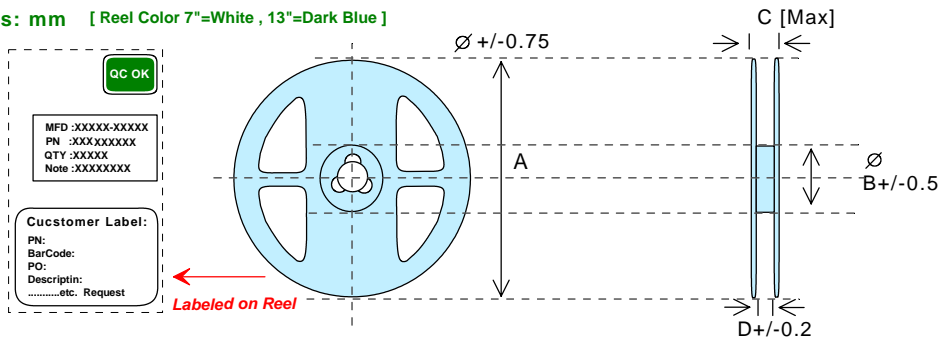
PEEL STRENGTH OF COVER TAPE
 STRENGTH : 10-13 g

VELOCITY : 300mm/min. CARRIER

ANGLE : 165-180° FROM THE TAPE ADHESIVE FACE

SIZE/mm	W	P	A ₀	B ₀	K ₀	T	F
63	12.00	12.00	6.20	6.20	3.25	0.35	
73	16.00	12.00	7.50	7.50	3.20	0.35	
74	16.00	12.00	7.50	7.50	4.30	0.35	
104	24.50	16.00	11.00	11.00	4.30	0.40	
126	16.00	16.00	13.05	13.05	6.20	0.40	
127	16.00	16.00	13.05	13.05	7.20	0.40	
128	16.00	16.00	13.05	13.05	8.20	0.40	

Reel Dimensions: mm [Reel Color 7"=White , 13"=Dark Blue]



SIZE / mm	A	B	C	D	REEL SIZE	QTY/REEL
63	330	100	14	12.5	13"	1.5K
73	330	100	22	16.5	13"	1.0K
74	330	100	22	16.5	13"	1.0K
104	330	100	30	24.5	13"	0.9K
126	330	100	30	24.5	13"	0.5K
127	330	100	30	24.5	13"	0.5K
128	330	100	30	24.5	13"	0.5K