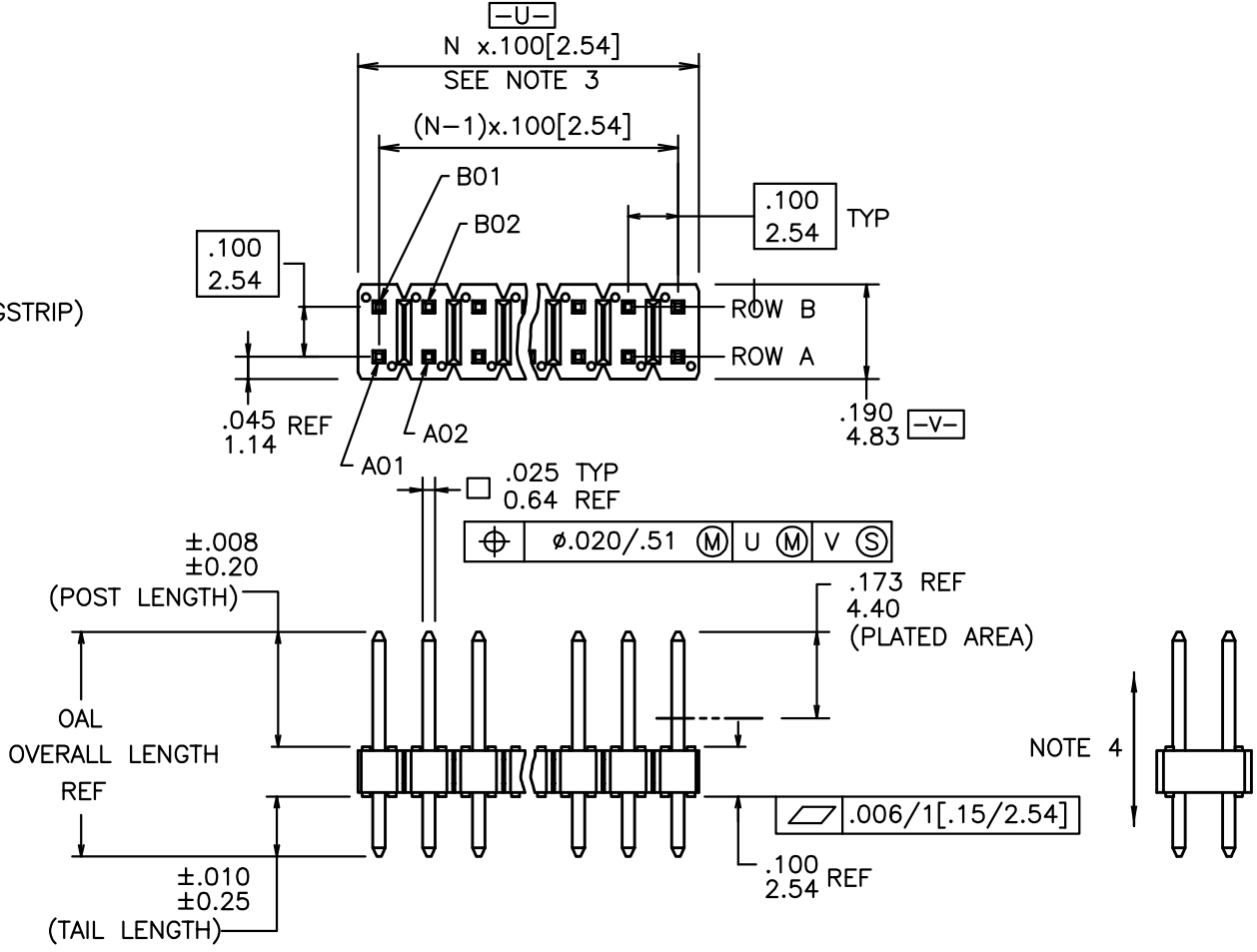
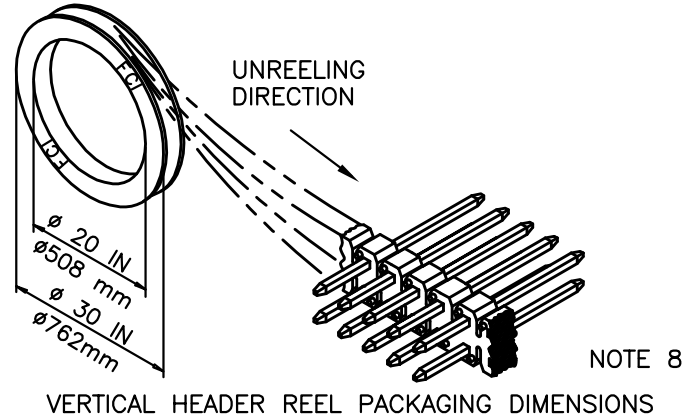
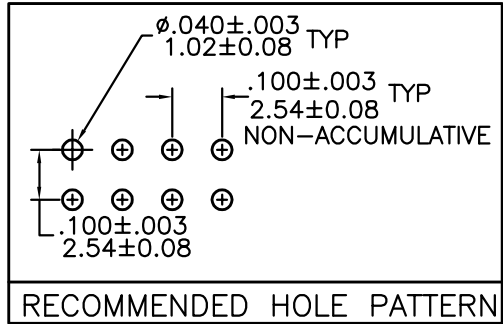


PRODUCT NUMBER
54102 - X XX - XX - XXX X

RETENTION
R= RETENTIVE LEG, SEE NOTES 5 & 7
POLARIZATION SEE NOTES 7 & 8
POSITIONS PER ROW, 01 to 36
SEE NOTE 10
POSITIONS PER REEL, 00=45,000 (BERGSTRIK)
PIN STYLES 6,8,10,30 & 32 ONLY.

PIN STYLE	POST	TAIL	OAL
05	0.230/5.84	0.095/2.41	0.425/10.80
06	0.230/5.84	0.110/2.79	0.440/11.18
08	0.230/5.84	0.120/3.05	0.450/11.43
10	0.230/5.84	0.150/3.81	0.480/12.19
12	0.230/5.84	0.300/7.62	0.630/16.00
30	0.318/8.08	0.120/3.05	0.538/13.67
32	0.318/8.08	0.150/3.81	0.568/14.43
34	0.318/8.08	0.212/5.38	0.630/16.00

PLATING:
S=15u"/0.38um GOLD ON CONTACT AREA
120u"/3.0um TIN/LEAD ON TAIL
G=30u"/0.76um GOLD ON CONTACT AREA
120u"/3.0um TIN/LEAD ON TAIL
T=120u"/3.0um TIN/LEAD ON CONTACT AREA
AND ON TAIL (SEE NOTE 11).
F=2u"/0.05um GOLD ON CONTACT AREA
AND ON TAIL



- NOTES:
- BERGSTIK /BERGSTRIK HOUSING MAT'L: HIGH TEMPERATURE THERMOPLASTIC. UL94V-0 COLOR: BLACK
 - PIN MATERIAL: PHOSPHOR-BRONZE
 - TO DETERMINE DIMENSIONS:
N = NUMBER OF POSITIONS PER ROW. EXAMPLE: 10 POS., N x .100[2.54]=1.00[25.40].
 - 2LBS/0.9KG MIN. PIN RETENTION IN EITHER DIRECTION
 - RETENTIVE LEG APPLICABLE TO TAIL LENGTH OF .120/3.05 ONLY. RETENTION IS APPLIED TO TWO PINS PER PART, ADJACENT TO ONE ANOTHER. 5lb/2.3kg MAX. INSERTION FORCE AND .25lb/1kg MIN RETENTION FORCE PER RETENTIVE PIN USING .062/1.57 THICK CIRCUIT BOARD AND RECOMMENDED HOLE PATTERN. RETENTIVE LOCATION AT THE DISCRETION OF THE MANUF. OMIT FROM PRODUCT NUMBER IF FEATURE IS NOT APPLICABLE.
 - BERGSTIK PACKAGED IN POLY BAGS. BERGSTRIK PACKAGED PER REEL.
 - POLARIZATION AND RETENTION NOT APPLICABLE TO BERGSTRIK.
 - FOR POLARIZATION SPECIFY POSITION NUMBER (i.e., A03=ROW A POS. 3) TO OMIT PIN. OMIT FROM PRODUCT NUMBER IF FEATURE IS NOT APPLICABLE.
 - UNDERPLATING: 50u"/1.27um Ni.
 - POSITIONS PER ROW 37 TO 50 CAN BE PRODUCED, BUT FLATNESS AND CURVATURE MAY NOT BE HELD TO PRINT SPECIFICATION.
 - PIN TIPS ON TN/LEAD PLATED PRODUCT MAY HAVE BARE METAL ON TWO SIDES, BOTH ENDS.

mat'l. code SEE NOTES 1 & 2				tolerances unless otherwise specified		CUSTOMER COPY	 www.fciconnect.com			
ltr	ecn no	dr	date							
C	V01968	MDF	08/07/00	linear	.XX ±.01/0.3	projection 	title .100 UNSHROUDED HDR. D/R THRU HOLE	product family BERGSTIK	code 213	sheet 1 of 1
D	V02373	AZ	10/02/00		.XXX ±.005/0.13					
E	V12228	DAI	09/17/01	angles	.XXX ±.0020/0.051	INCH/MM scale 1:1	A	54102		
F	V20751	GIP	07/09/02	dr	0° ±2°					
G	V21475	GIP	09/17/02	engr	D.INGRAM 05/16/99					
H	V21887	TAB	01/02/03	chr	H.SUNDY 07/21/99					
J	E03-0030	HTB	05/05/03	appd	H.SUNDY 07/21/99					
sheet index	revision sheet	J 1								

cage code
22526