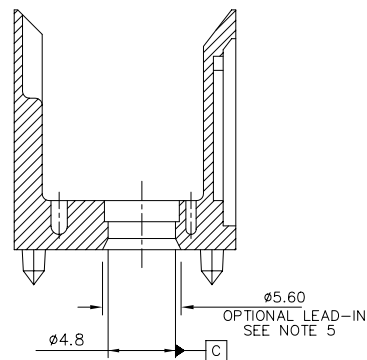
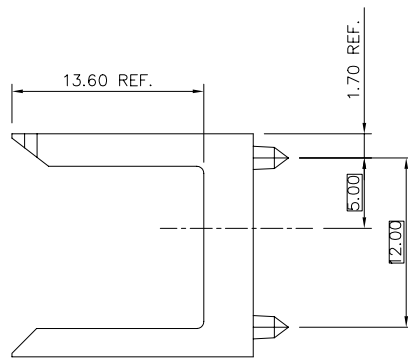
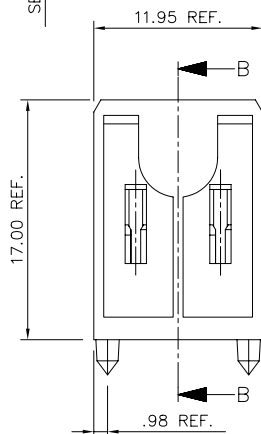
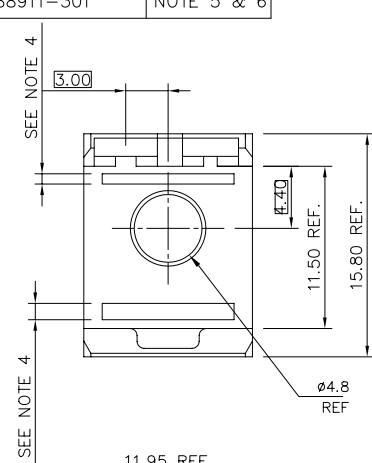
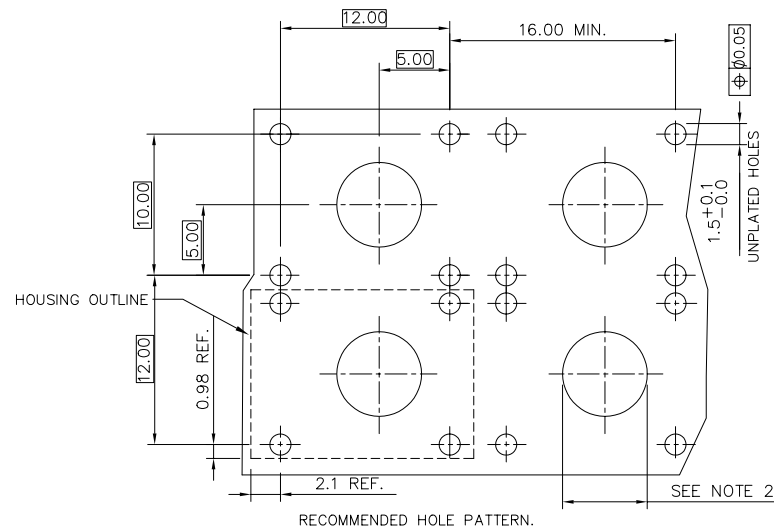


PRODUCT NUMBER	NOTES
88911-101	NOTE 6
88911-201	NOTE 3 & 6
88911-301	NOTE 5 & 6



SECTION B-B



NOTES:

1. MATERIAL-LIQUID CRYSTAL POLYMER 30% GLASS FLAME RETARDANT ACC. UL 94-V0 COLOR NATURAL
2. -WHEN USED WITH GUIDE PIN, HOLE DIAMETER TO BE 3.25 ± 0.10 AND UNPLATED.
-WHEN USED WITH STR. SCREW-TO-BOARD HIGH POWER INSERT, HOLE DIAMETER TO BE 3.25 ± 0.10 AND PLATED WITH 5.00 MIN. PAD DIAMETER.
-WHEN USED WITH A PLUG/PLUG HIGH POWER COUPLER OR A RECEPTACLE/RECEPTACLE COAX COUPLER, HOLE DIAMETER TO BE $6.00 + 0.10 / - 0.00$ AND UNPLATED.
3. TO BE USED WITH PRESS-FIT COAX SOCKETS.
4. CORING OPTIONAL AT DISCRETION OF MANUFACTURER.
5. P/N 88911-301 HAS 5.60 DIAMETER LEAD-IN CHAMFER ALL OTHER DIMENSIONS ARE THE SAME.
6. ADD "LF" SUFFIX AT THE END OF PART NUMBER FOR LEAD FREE OPTION.

7. THIS PRODUCT MEETS EUROPEAN UNION DIRECTIVES AND OTHER COUNTRY REGULATION AS DESCRIBED IN GS-22-008.
8. THE HOUSING WILL WITHSTAND EXPOSURE TO 260°C PEAK TEMPERATURE FOR 15 SECONDS IN A WAVE SOLDER APPLICATION WITH A 1.5mm MINIMUM THICK CIRCUIT BOARD OR FOR 10-20 SECONDS IN A CONVECTION, INFRA-RED OR VAPOR PHASE REFLOW OVEN. SEE APPLICATION NOTES/PROCEDURES IF THEY ARE AVAILABLE

mat'l. code SEE NOTE 1		surface ISO 1302 ✓	tolerance ISO 406 ISO 1101	projection mm	product family METRAL (tm)
ltr	ecn	no	dr	date	title
E	v70809	MDF	5/14/97		HYBRID HEADER HOUSING-12MM
F	v80738	MDF	4/16/98		
G	v01977	JRW	8/11/00		
H	v11651	LSS	6/05/01	dr	
J	v03-1116	LP	10/13/03	enrg	
K	M05-0224	MHT	10/25/05	chr	88911
L	M06-0286	MNR	7/27/06	appd	
sheet	revision	L	L		type
index	sheet	1	2		Product Customer Drawing

form: A3

Technical drawing of a mechanical part showing dimensions and tolerances. The drawing includes a cross-section of a component with a central hole. Key dimensions and tolerances are indicated:

- Overall width: 5.60
- Inner hole diameter: $\phi 4.8$
- Dimension C: Indicated by a dimension line and a box labeled 'C'.
- Dimension 0.70 \pm 0.1: Indicated by a dimension line.
- Dimension 1.40 \pm 0.1: Indicated by a dimension line.

SECTION A-A

6