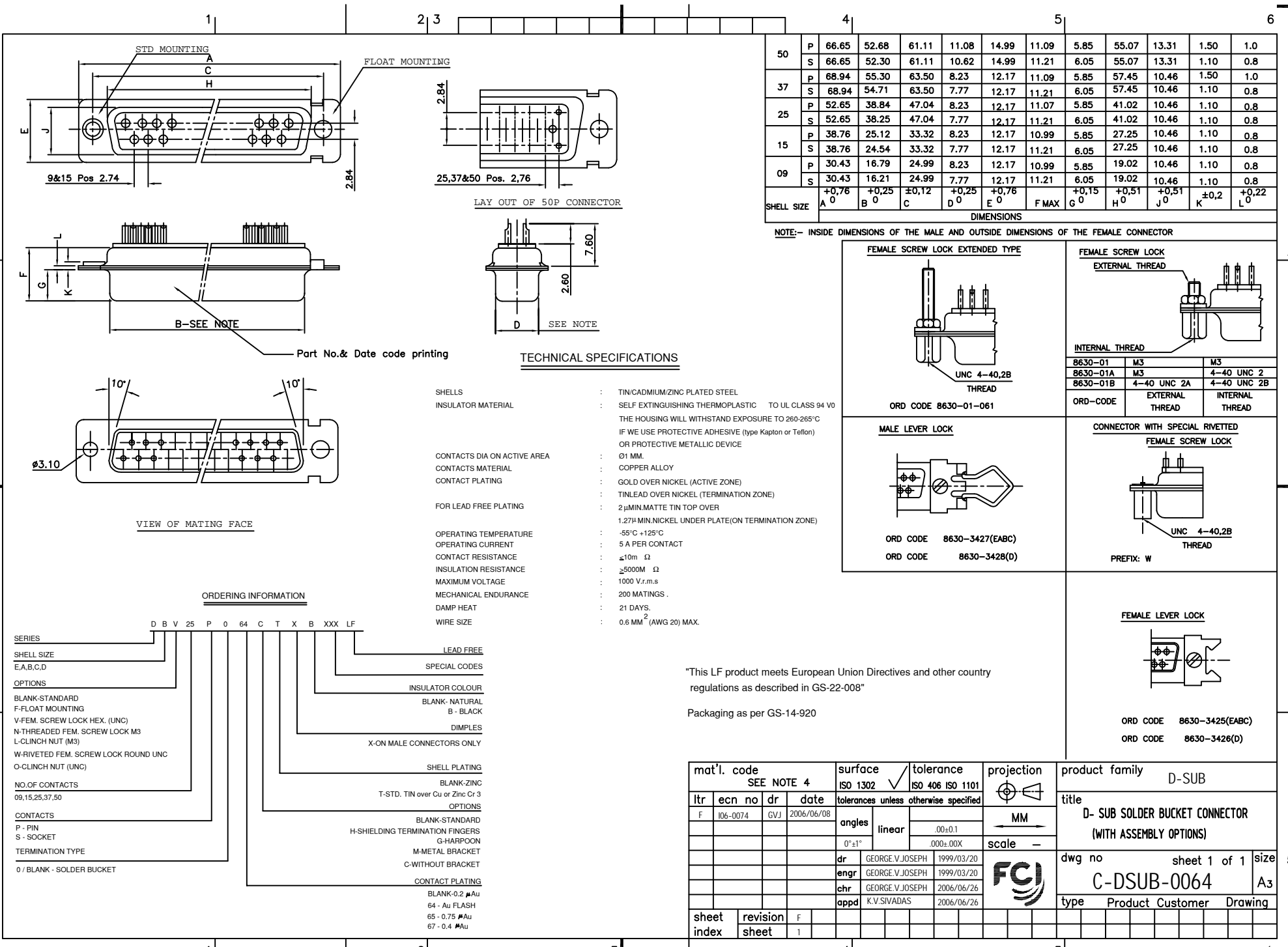




FCIconnect.com

Copyright FCI



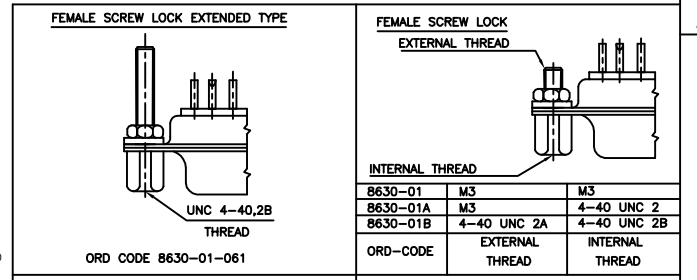
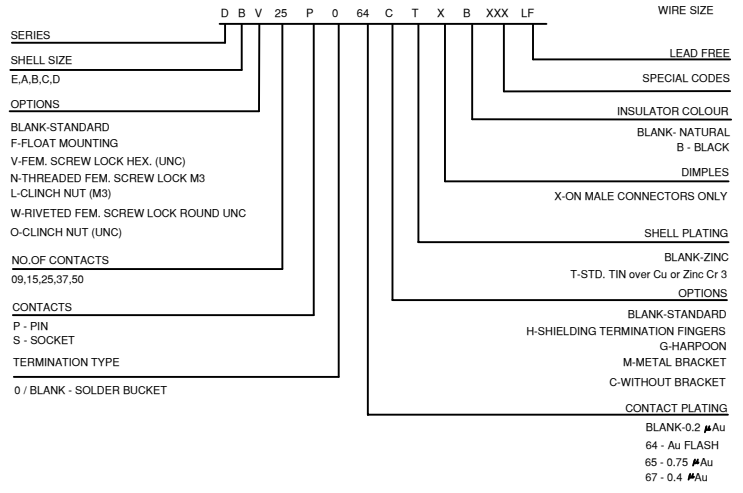
SHELL SIZE	P	DIMENSIONS										
		A	B	C	D	E	F	G	H	J	K	L
50	P	66.65	52.68	61.11	11.08	14.99	11.09	5.85	55.07	13.31	1.50	1.0
	S	66.65	52.30	61.11	10.62	14.99	11.21	6.05	55.07	13.31	1.10	0.8
37	P	68.94	55.30	63.50	8.23	12.17	11.09	5.85	57.45	10.46	1.50	1.0
	S	68.94	54.71	63.50	7.77	12.17	11.21	6.05	57.45	10.46	1.10	0.8
25	P	52.65	38.84	47.04	8.23	12.17	11.07	5.85	41.02	10.46	1.10	0.8
	S	52.65	38.25	47.04	7.77	12.17	11.21	6.05	41.02	10.46	1.10	0.8
15	P	38.76	25.12	33.32	8.23	12.17	10.99	5.85	27.25	10.46	1.10	0.8
	S	38.76	24.54	33.32	7.77	12.17	11.21	6.05	27.25	10.46	1.10	0.8
09	P	30.43	16.79	24.99	8.23	12.17	10.99	5.85	19.02	10.46	1.10	0.8
	S	30.43	16.21	24.99	7.77	12.17	11.21	6.05	19.02	10.46	1.10	0.8
TOLERANCES		A	B	C	D	E	F	G	H	J	K	L
		+0,76 0	+0,25 0	±0,12	+0,25 0	+0,76 0	F MAX	+0,15 0	+0,51 0	+0,51 0	±0,2	+0,22 0

NOTE:- INSIDE DIMENSIONS OF THE MALE AND OUTSIDE DIMENSIONS OF THE FEMALE CONNECTOR

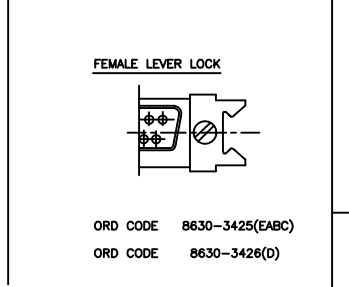
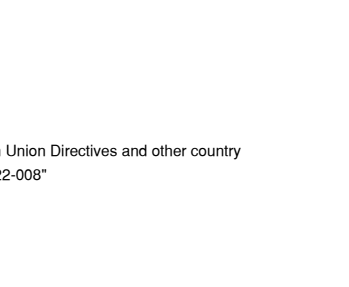
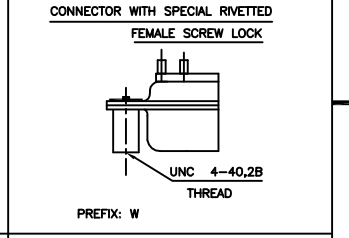
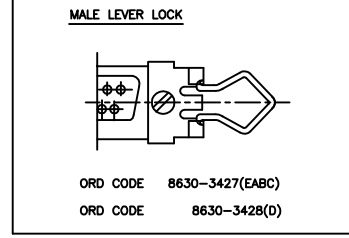
TECHNICAL SPECIFICATIONS

- SHELLS : TIN/CADMIUM/ZINC PLATED STEEL
- INSULATOR MATERIAL : SELF EXTINGUISHING THERMOPLASTIC TO UL CLASS 94 V0
- THE HOUSING WILL WITHSTAND EXPOSURE TO 260-265°C
- IF WE USE PROTECTIVE ADHESIVE (type Kapton or Teflon)
- OR PROTECTIVE METALLIC DEVICE
- CONTACTS DIA ON ACTIVE AREA : Ø1 MM.
- CONTACTS MATERIAL : COPPER ALLOY
- CONTACT PLATING : GOLD OVER NICKEL (ACTIVE ZONE)
- TINLEAD OVER NICKEL (TERMINATION ZONE)
- FOR LEAD FREE PLATING : 2µMIN.MATTE TIN TOP OVER
- 1.27H MIN.NICKEL UNDER PLATE(ON TERMINATION ZONE)
- OPERATING TEMPERATURE : -55°C +125°C
- OPERATING CURRENT : 5 A PER CONTACT
- CONTACT RESISTANCE : ≤10m Ω
- INSULATION RESISTANCE : ≥5000M Ω
- MAXIMUM VOLTAGE : 1000 V.r.m.s
- MECHANICAL ENDURANCE : 200 MATINGS.
- DAMP HEAT : 21 DAYS.
- WIRE SIZE : 0.6 MM² (AWG 20) MAX.

ORDERING INFORMATION



FEMALE SCREW LOCK		EXTERNAL THREAD		INTERNAL THREAD	
8630-01	M3	4-40 UNC 2A	4-40 UNC 2B	M3	4-40 UNC 2
8630-01A	M3				
8630-01B					
ORD-CODE	EXTERNAL THREAD			INTERNAL THREAD	



"This LF product meets European Union Directives and other country regulations as described in GS-22-008"

Packaging as per GS-14-920

mat'l. code SEE NOTE 4				surface ISO 1302 ✓		tolerance ISO 406 ISO 1101		projection		product family D-SUB	
ltr	ecn no	dr	date	tolerances unless otherwise specified							
F	106-0074	GVJ	2006/06/08	angles		linear		MM		title	
				0°±1°		.00±0.1		scale -		D- SUB SOLDER BUCKET CONNECTOR (WITH ASSEMBLY OPTIONS)	
				dr		enrg		chr		appd	
				GEORGE.V.JOSEPH 1999/03/20		GEORGE.V.JOSEPH 1999/03/20		GEORGE.V.JOSEPH 2006/06/26		K.V.SIVADAS 2006/06/26	
				sheet index		revision sheet		F		type Product Customer Drawing	
				1		1				sheet 1 of 1 size A3	

