

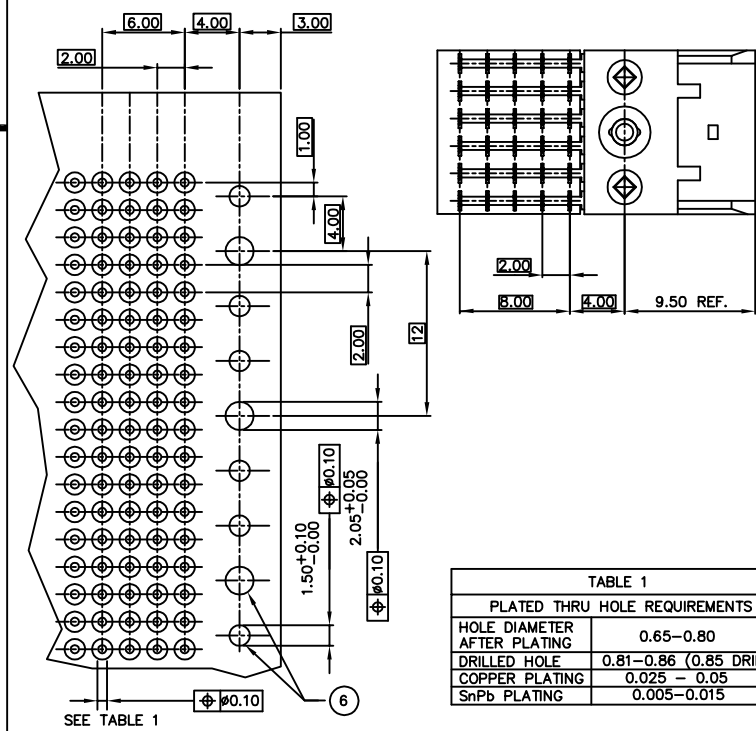
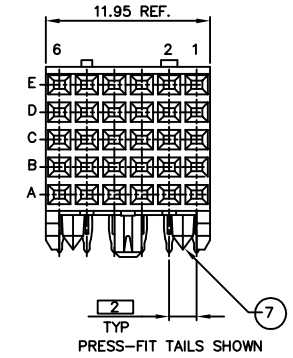
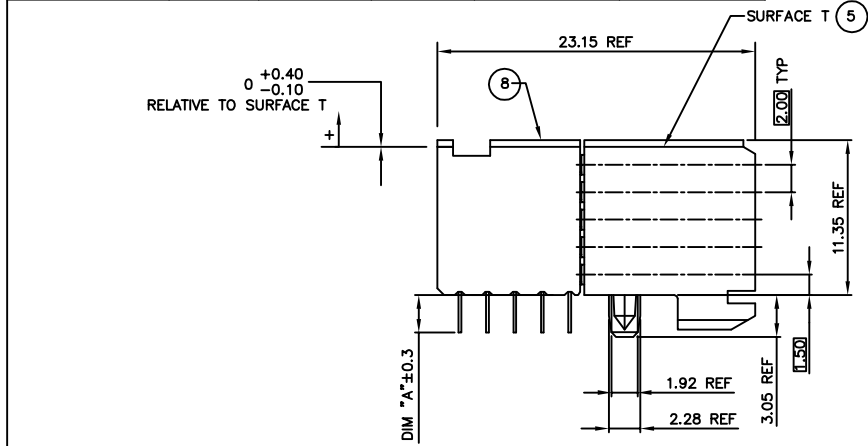
Tous droits strictement reserves. Reproduction ou communication a des tiers interdite sous quelque forme que ce soit sans autorisation écrite du propriétaire. Propriete de c FCI. Droits de reproduction FCI.



All rights strictly reserved. Reproduction or issue to third parties in any form whatever is not permitted without written authority from the proprietor. Property of FCI. Copyright FCI.

| PRODUCT NUMBER | PEG TYPE | TAIL TYPE | TAIL LGTH. DIM "A" | PCB THICKNESS±0.20 | LOADING CONFIGURATION |
|----------------|----------|-----------|--------------------|--------------------|-----------------------|
| 89047-X02      | PRESS    | PRESS-FIT | 2.90               | 1.6                | FULLY LOADED          |
| 89047-X12      | PRESS    | PRESS-FIT | 3.53               | 2.4                |                       |
| 89047-X02LF    | PRESS    | PRESS-FIT | 2.90               | 1.6                | FULLY LOADED          |
| 89047-X12LF    | PRESS    | PRESS-FIT | 3.53               | 2.4                |                       |

| PLATING CONTACT AREA: |                   |
|-----------------------|-------------------|
| DASH NR:              | PERFORMANCE LEVEL |
| -1YY                  | TELCORDIA CO      |
| -2YY                  | CUSTOMER SPECIAL  |
| -3YY                  | CUSTOMER SPECIAL  |
| -9YY                  | TELCORDIA CO      |
| -1YYLF                | TELCORDIA CO      |
| -2YYLF                | CUSTOMER SPECIAL  |
| -3YYLF                | CUSTOMER SPECIAL  |
| -9YYLF                | TELCORDIA CO      |



|                             |                        |
|-----------------------------|------------------------|
| HOLE DIAMETER AFTER PLATING | 0.65-0.80              |
| DRILLED HOLE                | 0.81-0.86 (0.85 DRILL) |
| COPPER PLATING              | 0.025 - 0.05           |
| SnPb PLATING                | 0.005-0.015            |

RECOMMENDED PC BOARD LAYOUT, COMPONENT SIDE.  
(SEE PRINT 58351 FOR ADDITIONAL PCB INFORMATION)

- NOTES:
- CONNECTOR MATERIALS:  
HOUSING: LCP, 30% GLASS FILLED, UL 94-V0 COMPLIANT  
PRESS BLOCK: GLASS FILLED, HIGH TEMPERATURE RESIN UL 94-V0 COMPLIANT  
TERMINAL: PHOSPHOR BRONZE ALLOY
  - TAIL PLATING:  
89047-XYX = 0.5-1.5µm Sn Pb  
89047-XYXLF = 0.5-1.5µm Sn (LEAD FREE)
  - PRODUCT SPECIFICATION:  
GS-12-002
  - APPLICATION SPECIFICATIONS:  
BUS-20-061  
GS-20-001  
TA-941
  - PRODUCT MARKING: (PART NUMBER & LOT CODE).
  - INDICATED HOLES ARE UNPLATED.
  - DIAMOND LOCATION PEG ARE ONLY EXISTED ON THE BOTH SIDES OF PRODUCT.
  - TOP SURFACE OF PRESS BLOCK MAY EXTEND UP TO 0.4MM HIGHER THAN HOUSING. THIS MAY AFFECT THE TAIL LENGTH BEFORE APPLICATION TO A BOARD.
  - THESE PRODUCTS WHERE THE PART NUMBER ENDS IN "LF" MEET THE EUROPEAN UNION DIRECTIVES AND OTHER COUNTRY REGULATIONS AS DESCRIBED IN GS-22-008.  
ALL PRODUCTS WILL WITHSTAND EXPOSURE TO 240°C FOR 60 SECONDS IN A CONVECTION, INFRARED OR VAPOR PHASE REFLOW OVEN.
  - FOR LEAD FREE PART NUMBERS ADD "LF" SUFFIX. EXAMPLE: 89047-XYXLF.

| mat'l. code |           | tolerances unless otherwise specified |          | CUSTOMER COPY | www.fciconnect.com |
|-------------|-----------|---------------------------------------|----------|---------------|--------------------|
| NOTE 1      |           | 0.X±0.3                               |          | projection    |                    |
| ltr         | ecn no    | dr                                    | date     |               |                    |
| S           | DG06-0445 | Cenh                                  | 10/30/06 |               | MM                 |
| T           | DG07-0171 | Cenh                                  | 05/25/07 | scale 1:1     |                    |
| U           | DG08-0171 | TER                                   | 8/15/08  |               | sheet index        |
| N           | V05-0341  | DAI                                   | 04/18/05 | revision U    |                    |
| P           | V05-0522  | DAI                                   | 06/08/05 |               | sheet              |
| R           | V05-0874  | DAI                                   | 09/13/05 | sheet         |                    |
| sheet index | revision  | U                                     |          |               |                    |
|             | sheet     | 1                                     |          |               |                    |

cage code 22526