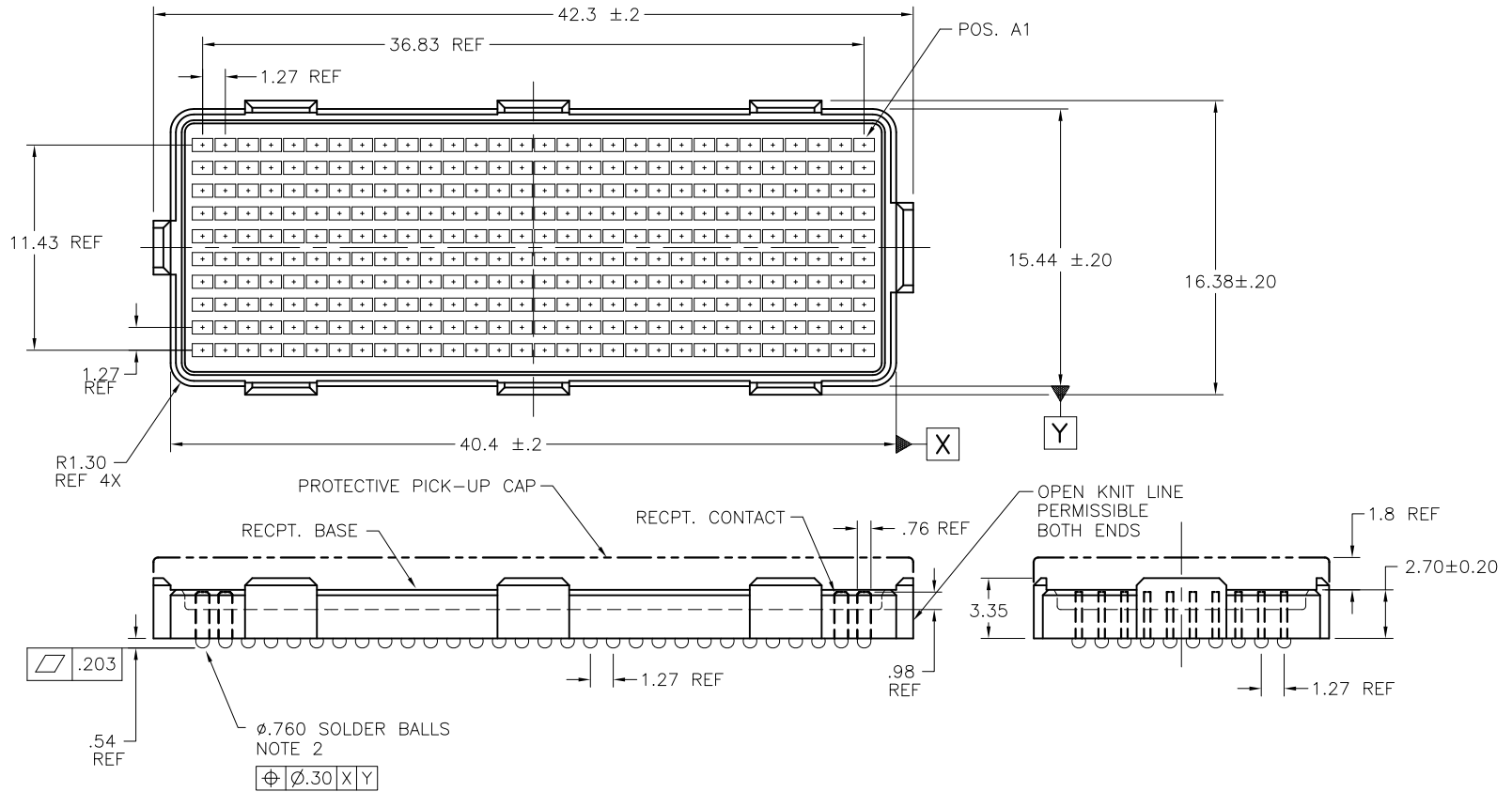
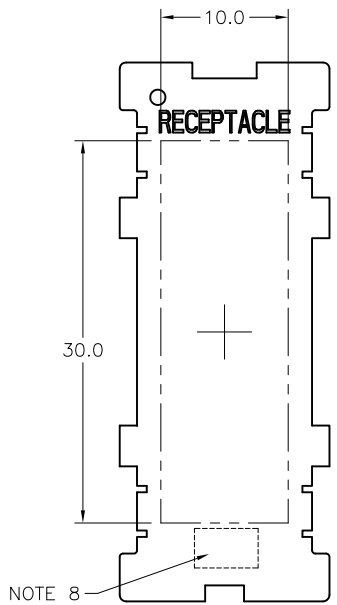


PRODUCT NUMBER  
SEE TABLE

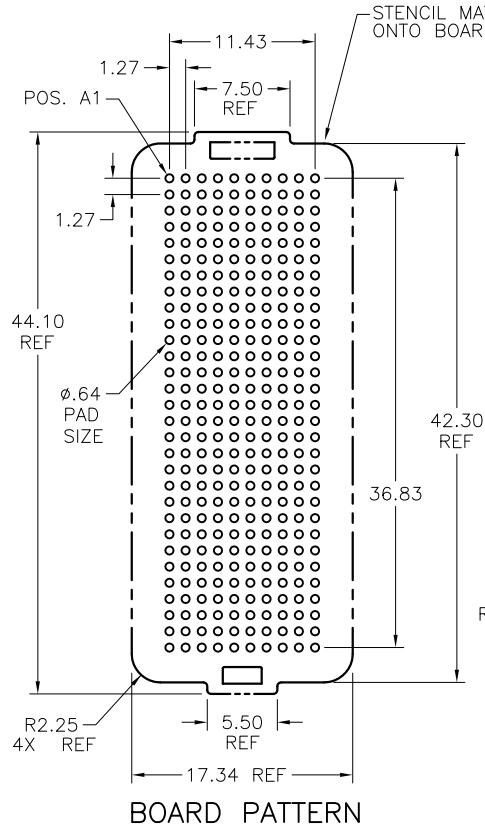


mat'l. code				surface		tolerance		projection		product family	
SEE NOTE 1				ASME Y14.5		ASME Y14.5				MEG-ARRAY	
ltr	ec'n no	dr	date	tolerances unless otherwise specified				MM		title	
K	V06-0560	LP	2006-07-13	angles	XX.13					4mm RECEPTACLE ASSEMBLY	
L	V11-0028	HTB	2011-06-02	0° ±2'	XXX+051			scale 3:1		10 X 30 = 300 POS.	
F	V20949	DAI	2002-08-12	dr	D. WAUGHEN	1998-12-18				dwg no	
G	V03-0680	DAI	2003-06-19	engr	D. HARPER	1998-12-18				sheet 1 of 3 size	
H	V04-0940	VS	2004-10-18	chr	D. HARPER	1998-12-18				84501 A4	
J	V05-1071	DAI	2005-12-21	appd	D. HARPER	1998-12-18				type CUSTOMER Drawing	
sheet	revision	L	L	L							
index	sheet	1	2	3							

PRODUCT NUMBER  
SEE TABLE

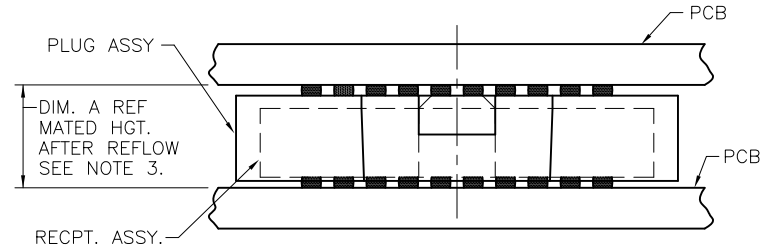


NOTE 8  
FLAT AREA FOR PICK-UP CAP



BOARD PATTERN

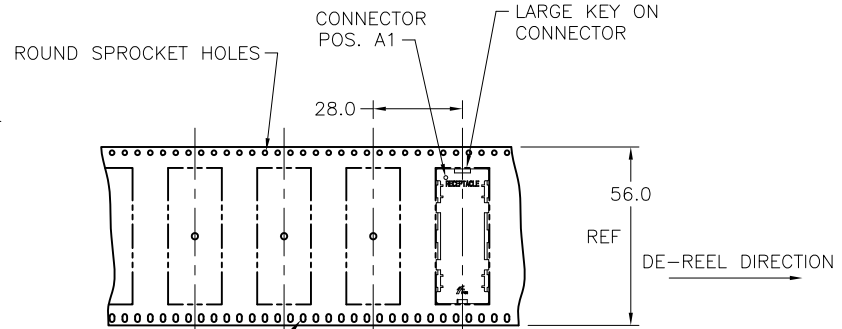
STENCIL MATED CONNECTOR OUTLINE ONTO BOARD.



MATED HEIGHT TABLE		
DIM. A	PLUG ASSY. P/N	RECP. ASSY. P/N
4.0	84500	84501
10.0	84578	84501

MATED HEIGHT AFTER REFLOW IS BASED ON  $\phi$ .64mm PAD (METAL-DEFINED) AND .13mm SOLDER PASTE THICKNESS. SEE NOTE 3.

END VIEW - MATED CONNECTORS SCALE NONE



TAPE & REEL PACKAGING  
PER EIA 481-3  
SCALE NONE

mat'l. code	surface	tolerance	projection	product family
SEE NOTE 1	ASME Y14.5	ASME Y14.5		MEG-ARRAY
ltr	ecn no	dr	date	title
				4mm RECEPTACLE ASSEMBLY 10 X 30 = 300 POS.
L				dwg no
				84501
				sheet 2 of 3
				size
				A4
				type
				CUSTOMER Drawing
sheet index	revision sheet			



PRODUCT NUMBER	PICK-UP CAP	CONTACT PLATING	SOLDER BALL	NOTES
84501-001	YES	15µ" (.38µm) Au OVER Ni	SnPb	
84501-001LF			SnAgCu LEAD FREE	5 & 6
84501-101	YES	30µ" (.76µm) Au OVER Ni	SnPb	
84501-101LF			SnAgCu LEAD FREE	5 & 6
84501-201	YES	SEE NOTE 4	SnPb	
84501-201LF			SnAgCu LEAD FREE	5 & 6
84501-A01	YES	30µ" (.76µm) Au OVER Ni NOTE 7	SnPb	
84501-A01LF			SnAgCu LEAD FREE	5 & 6

NOTES:

① MATERIAL

HOUSING: LCP  
CONTACT: COPPER ALLOY

PLATING

CONTACT: (SEE TABLE ON SHEET1)  
SOLDER BALL: (SEE TABLE ON SHEET1)  
EUTECTIC SnPb OR LEAD FREE  
95.5Sn/4Ag/0.5Cu

② SOLDER BALLS WILL NOT BE PERFECT SPHERICAL SHAPE DUE TO REFLOW ATTACHMENT.

③ MATED HEIGHT EFFECTED BY CUSTOMER'S PCB PAD SIZE, PLATING, SOLDER REFLOW PROFILE, & SOLDER PASTE.

④ PLATING FOR -2XX SERIES DASH NOS. MEETS THE REQUIREMENTS OF NORTEL NPS25298-2 (CENTRAL OFFICE ENVIRONMENT, 25 YEAR LIFE EXPECTANCY).

⑤ FOR PROPER APPLICATION FOLLOW FCI APPLICATION SPECIFICATION GS-20-033 LEAD FREE SOLDER BALLS WILL NOT SOLDER PROPERLY IN A LEADED SOLDER PROCESS DUE TO A HIGHER REFLOW TEMPERATURE. LEAD FREE PRODUCT IS THEREFORE NOT BACKWARDS COMPATIBLE WITH LEADED OR SOME SOLDERING APPLICATIONS. REFERENCE FCI APPLICATION SPECIFICATION.

⑥ THIS PRODUCT MEETS EUROPEAN UNION DIRECTIVES AND OTHER COUNTRY REGULATIONS AS DESCRIBED IN GS-22-008 PRODUCT MEETING THIS DIRECTIVE IS IDENTIFIED IN THE LOT CODE NUMBER MARKED ON EACH PART BY HAVING AN "X" IN THE SEVENTH CHARACTER POSITION.

⑦ 84501-A01 AND -A01LF ARE CUSTOMER SPECIALS.

⑧ CURRENT COMPANY LOGO TO BE VISIBLE IN APPROXIMATE AREA SHOWN.

mat'l. code		surface		tolerance		projection		product family	
SEE NOTE 1		ASME Y14.5		ASME Y14.5				MEG-ARRAY	
ltr	ecn no	dr	date	tolerances unless otherwise specified		MM		title	
L				angles	X*3	←		4mm RECEPTACLE ASSEMBLY	
				fin	XX*13	→		10 X 30 = 300 POS.	
				0° ±2'	XXX*051	scale 2:1		dwg no	
		dr	D. WAUGHEN	1998-12-16			sheet 3 of 3		size
		engr	D. HARPER	1998-12-16			84501		A4
		chr	D. HARPER	1998-12-16			type		CUSTOMER Drawing
		appd	D. HARPER	1998-12-16					
sheet index	revision sheet								