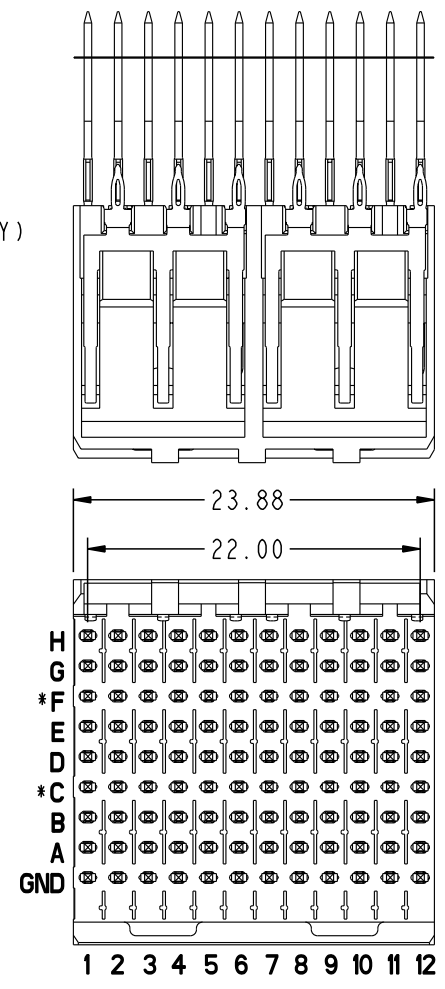
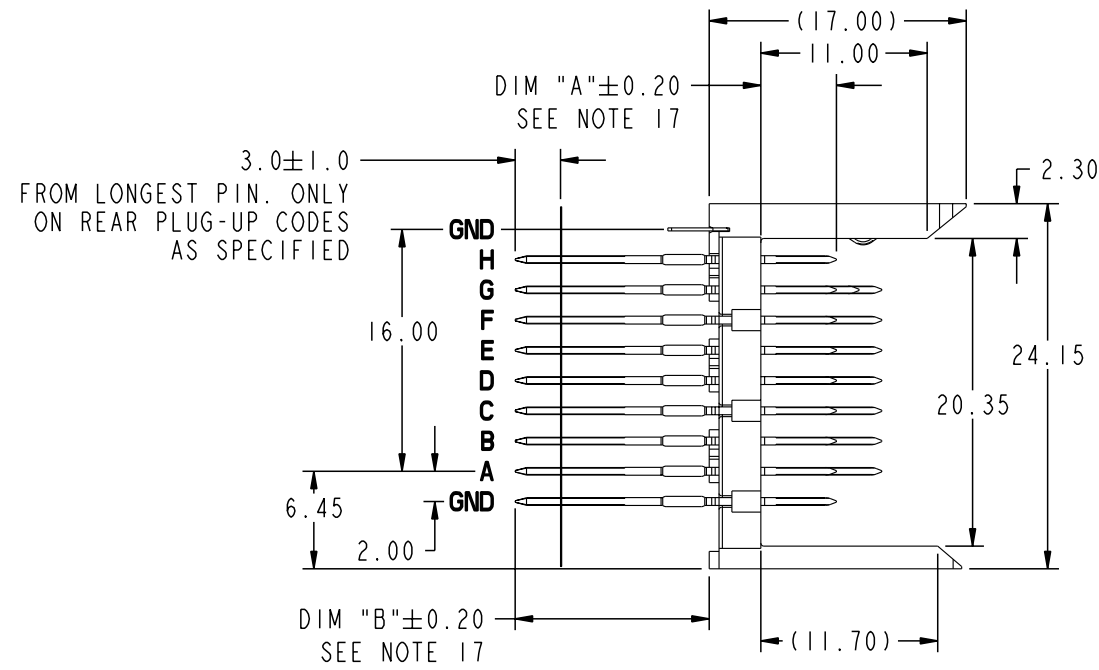
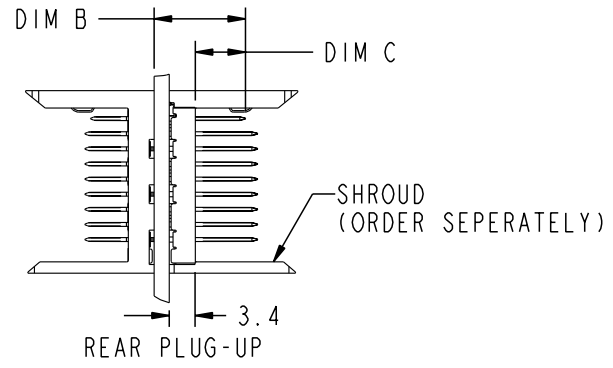
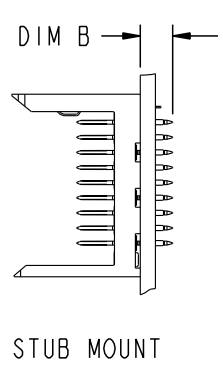


Tous droits strictement réservés. Reproduction ou communication o des tiers interdite sous quelque forme que ce soit sans autorisation écrite du propriétaire. Propriete de c FCI. Droits de reproduction FCI.

All rights strictly reserved. Reproduction or issue to third parties in any form whatever is not permitted without written authority from the proprietor. Property of FCI. Copyright FCI.

PRODUCT NUMBER
63784-XXXX
63784-XXXXLF



mat'l code				--				tolerances unless otherwise specified				CUSTOMER		 www.fciconnect.com	
ltr	ecr no.	dr	date	linear	projection				COPY				title <b>HEADER - SELECT LOAD</b> STR. P.F. EXT. 8x12		
AA	V04-0538	TAB	05/27/04						MM						
AB	V05-0118	TAB	02/10/05						scale						
AC	V05-0179	DAI	02/21/05	angles	dr E. KROPER. 1/10/01 engr J. VOLSTORF 1/10/01 chr J. VOLSTORF 1/10/01 appd J. VOLSTORF 1/10/01				product family METRAL 1000		code 213				
AD	V05-0271	DAI	03/29/05						size		dwg no		A 63784		sheet 1 of 9
AE	V05-0533	TAB	06/02/05	sheet index revision sheet				AG AG AG AG AG AG AG AG AG AG				cage code 22526			
AF	V05-1022	LP	11/8/05											1	
AG	V05-1125	LP	12/19/05	1		2		3		4		5			

Pro/E

Tous droits strictement réservés. Reproduction ou communication o des tiers interdite sous quelque forme que ce soit sans autorisation écrite du propriétaire. Propriété de c FCI. Droits de reproduction FCI.

All rights strictly reserved. Reproduction or issue to third parties in any form whatever is not permitted without written authority from the proprietor. Property of FCI. Copyright FCI.

**A**  
**FCI**

INFORMATION FOR MATING WITH 74981 METRAL 1000 RECEPTACLES										
PIN CODES										
DIM A	DIM B									
	4.30	12.20	12.95	13.70	14.45	15.20	15.70	16.40	17.10	
5.00	1*	22	30	5	35	48	40	65	9	
5.75	2*	44	31	6	36	49	25	66	10	
6.50	3*	45	32	7	37	50	41	24	11	
7.25	4*	46	33	8	38	51	42	67	12	
8.00	19*	47	34	20	39	52	43	68	21	
RESTRICTION ON CURCUIT BOARD THICKNESS RANGE FOR PIN POSITIONS A, B, C, D, E, F, G & H										
DIM A	DIM B									
	4.30	12.20	12.95	13.70	14.45	15.20	15.70	16.40	17.10	
MIN THICKNESS	1.60	2.95	2.95	2.95	3.05	3.80	4.30	5.00	5.70	
MAX THICKNESS	NONE	3.80	4.55	5.30	6.05	6.80	7.30	8.00	8.70	
RESTRICTION ON CURCUIT BOARD THICKNESS RANGE FOR PIN POSITION 'GND' **										
DIM A	DIM B									
	4.30	12.20	12.95	13.70	14.45	15.20	15.70	16.40	17.10	
MIN THICKNESS	1.60	2.95	3.25	4.00	4.75	5.50	6.00	6.70	7.40	
MAX THICKNESS	NONE	4.20	4.95	5.70	6.45	7.20	7.70	8.40	9.10	

- \* STUB PINS - NO REAR PLUG-UP WITH PIN ALIGNER
- \*\* THE GREATEST RANGE OCCURS WHEN THE B DIMENSION OF PIN 'GND' IS ONE SIZE SHORTER THEN THE OTHER PINS.
- \*\*\* REAR PLUG-UP CODES WITHOUT PIN-ALIGNER

PRODUCT NUMBER	CIRCUIT BOARD THICKNESS RANGE FOR REAR PLUG-UP CODES	
	MIN	MAX
63784-X002	*2.30-2.95mm	5.30mm
63784-X003	*2.30-2.95mm	5.30mm
63784-X005	*2.30-2.95mm	5.30mm
63784-X006	*2.30-2.95mm	5.30mm
63784-X009	4.75mm	6.05mm
63784-X012	2.95mm	3.80mm
63784-X016	5.50mm	6.80mm
63784-X019	*2.30-5.70mm	7.30mm
63784-X020	*2.30-4.30mm	5.70mm
63784-X021	*2.30-4.30mm	5.70mm
63784-X022	*2.30-4.30mm	5.70mm
63784-X023	*2.30-4.30mm	5.70mm
63784-X024	*2.30-4.30mm	5.70mm
63784-X025	*2.30-4.30mm	5.70mm
63784-X026	*2.30-4.30mm	5.70mm
63784-X032	*2.30-4.30mm	5.70mm
63784-X033	*2.30-4.30mm	5.70mm

\* NOT A STANDARD METRAL 1000 REAR PLUG-UP APPLICATION

mat'l code				tolerances unless otherwise specified		CUSTOMER		<b>A</b> <b>FCI</b> www.fciconnect.com	
ltr	ecr no.	dr	date	linear	COPY		title		
AG	-	-	-		projection		HEADER - SELECT LOAD STR. P.F. EXT. 8x12		
				angles	MM		product family		code
				dr	E. KROPER.	1/10/01	METRAL 1000		213
				enrg	J. VOLSTORF	1/10/01	size	dwg no	sheet
				chr	J. VOLSTORF	1/10/01	63784		2
				appd	J. VOLSTORF	1/10/01	A		
sheet index	revision sheet						scale 1:1		

Pro/E

coge code 22526

PDM: Rev:AG

STATUS:Released

Printed: Feb 10, 2006

Tous droits strictement réservés. Reproduction ou communication o des tiers interdite sous quelque forme que ce soit sans autorisation écrite du propriétaire. Propriete de c FCI. Droits de reproduction FCI.

All rights strictly reserved. Reproduction or issue to third parties in any form whatever is not permitted without written authority from the proprietor. Property of FCI. Copyright FCI.



INFORMATION FOR MATING WITH 52066 METRAL 4000 RECEPTACLES										
PIN CODES										
DIM A	DIM B									
	4.30	12.20	12.95	13.70	14.45	15.20	15.70	16.40	17.10	
5.00	1*	22	30	5	35	48	40	65	9	
5.75	2*	44	31	6	36	49	25	66	10	
6.50	3*	45	32	7	37	50	41	24	11	
7.25	4*	46	33	8	38	51	42	67	12	
8.00	19*	47	34	20	39	52	43	68	21	
RESTRICTION ON CURCUIT BOARD THICKNESS RANGE FOR PIN POSITIONS A, B, D, E, G & H										
DIM A	DIM B									
	4.30	12.20	12.95	13.70	14.45	15.20	15.70	16.40	17.10	
MIN THICKNESS	1.60	2.95	2.95	3.30	4.05	4.80	5.30	6.00	6.70	
MAX THICKNESS	NONE	3.80	4.55	5.30	6.05	6.80	7.30	8.00	8.70	
RESTRICTION ON CURCUIT BOARD THICKNESS RANGE FOR PIN POSITIONS C & F										
DIM A	DIM B									
	4.30	12.20	12.95	13.70	14.45	15.20	15.70	16.40	17.10	
MIN THICKNESS	1.60	2.95	2.95	2.95	3.05	3.80	4.30	5.00	5.70	
MAX THICKNESS	NONE	3.80	4.55	5.30	6.05	6.80	7.30	8.00	8.70	
RESTRICTION ON CURCUIT BOARD THICKNESS RANGE FOR PIN POSITION 'GND' **										
DIM A	DIM B									
	4.30	12.20	12.95	13.70	14.45	15.20	15.70	16.40	17.10	
MIN THICKNESS	1.60	2.95	3.25	4.00	4.75	5.50	6.00	6.70	7.40	
MAX THICKNESS	NONE	4.20	4.95	5.70	6.45	7.20	7.70	8.40	9.10	

\* STUB PINS - NO REAR PLUG-UP  
 \*\* THE GREATEST RANGE OCCURS WHEN THE B DIMENSION OF PIN 'GND' IS ONE SIZE SHORTER THEN THE OTHER PINS.

PRODUCT NUMBER	CIRCUIT BOARD THICKNESS RANGE FOR REAR PLUG-UP CODES	
	MIN	MAX
63784-X002	*2.30-3.30mm	5.30mm
63784-X003	*2.30-3.30mm	5.30mm
63784-X005	*2.30-3.30mm	5.30mm
63784-X006	**	**
63784-X009	4.80mm	6.05mm
63784-X012	**	**
63784-X016	5.50mm	6.80mm
63784-X019	*2.30-6.70mm	7.30mm
63784-X020	*2.30-5.30mm	5.70mm
63784-X021	*2.30-5.30mm	5.70mm
63784-X022	*2.30-5.30mm	5.70mm
63784-X023	*2.30-5.30mm	5.70mm
63784-X024	*2.30-5.30mm	5.70mm
63784-X025	*2.30-5.30mm	5.70mm
63784-X026	*2.30-5.30mm	5.70mm
63784-X032	**	**
63784-X033	*2.30-5.30mm	5.70mm

\* NOT A STANDARD METRAL 4000 REAR PLUG-UP APPLICATION  
 \*\* CANNOT BE MATED TO A METRAL 4000 RECEPTACLE

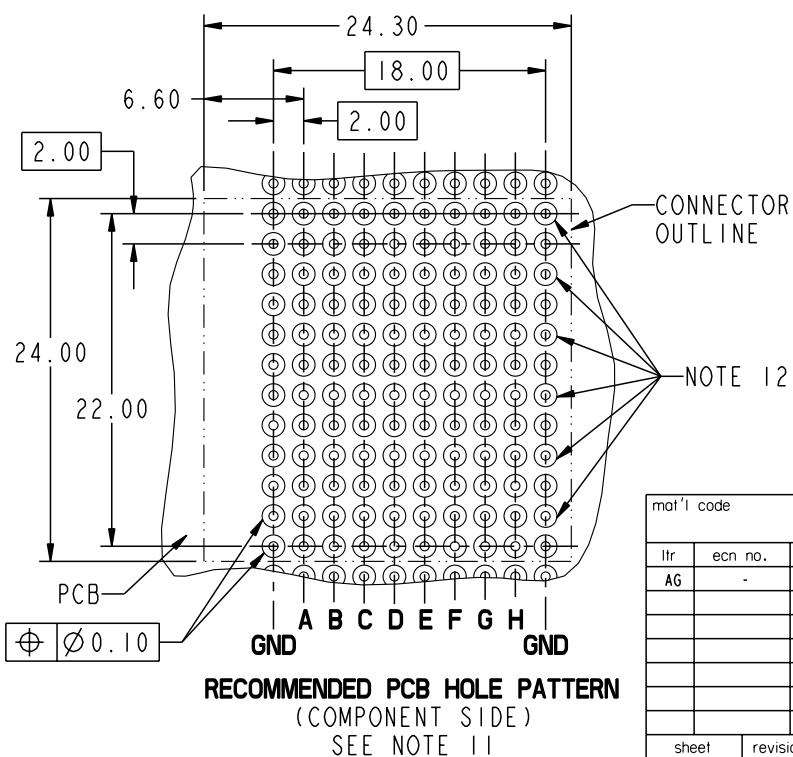
mat'l code		--		tolerances unless otherwise specified		CUSTOMER		 www.fciconnect.com	
ltr	ecn no.	dr	date	linear	projection		 title <b>HEADER - SELECT LOAD STR. P.F. EXT. 8x12</b>		
AG	-	-	-		angles	 product family <b>METRAL 1000</b> code <b>213</b>			
				dr	E. KROPER.	1/10/01	MM		size
				engr	J. VOLSTORF	1/10/01	← MM →		dwg no
				chr	J. VOLSTORF	1/10/01	scale		<b>63784</b> sheet <b>3</b>
				appd	J. VOLSTORF	1/10/01	1:1		
sheet index	revision sheet								

Tous droits strictement réservés. Reproduction ou communication o des tiers interdite sous quelque forme que ce soit sans autorisation écrite du propriétaire. Propriété de c FCI. Droits de reproduction FCI.

All rights strictly reserved. Reproduction or issue to third parties in any form whatever is not permitted without written authority from the proprietor. Property of FCI. Copyright FCI.

**A**  
**FCI**

PRODUCT NUMBER	PIN CONTACT AREAS TO RECEPTACLE	PRESS FIT PIN TO PCB	GROUND SPRING CONTACT FINGERS (19)	GROUND SPRING EON PRESS FIT TO PCB	FOR REAR PLUG-UP APPLICATIONS USE SHROUD
63784-1YYY	0.8μm Au OVER Ni	SnPb OVER Ni	0.8μm Au OVER Ni	SnPb OVER Ni	74993-102
63784-2YYY	2.0μm Au OVER Ni	SnPb OVER Ni	1.3μm Au OVER Ni	SnPb OVER Ni	74993-302
63784-3YYY	1.3μm Au OVER Ni	SnPb OVER Ni	1.3μm Au OVER Ni	SnPb OVER Ni	74993-302
63784-5YYY	1.3μm GXT OVER Ni	SnPb OVER Ni	1.3μm GXT OVER Ni	SnPb OVER Ni	74993-502
63784-9YYY	0.8μm GXT OVER Ni	SnPb OVER Ni	0.8μm Au OVER Ni	SnPb OVER Ni	74993-102
63784-AYYY	0.8μm Au OVER Ni	0.08μm Au OVER Ni	0.8μm Au OVER Ni	SnPb OVER Ni	74993-102
63784-1YYYYLF	0.8μm Au OVER Ni	Sn OVER Ni	0.8μm Au OVER Ni	Sn OVER Ni	84625-102
63784-2YYYYLF	2.0μm Au OVER Ni	Sn OVER Ni	1.3μm Au OVER Ni	Sn OVER Ni	84625-302
63784-3YYYYLF	1.3μm Au OVER Ni	Sn OVER Ni	1.3μm Au OVER Ni	Sn OVER Ni	84625-302
63784-5YYYYLF	1.3μm GXT OVER Ni	Sn OVER Ni	1.3μm GXT OVER Ni	Sn OVER Ni	84625-502
63784-9YYYYLF	0.8μm GXT OVER Ni	Sn OVER Ni	0.8μm Au OVER Ni	Sn OVER Ni	84625-102
63784-AYYYLF	0.8μm Au OVER Ni	0.08μm Au OVER Ni	0.8μm Au OVER Ni	Sn OVER Ni	84625-102



PRESS-FIT HOLES *	OPTION 1
HOLE DIAMETER AFTER PLATING	Ø 0.65-0.80
DRILLED HOLE	Ø 0.81-0.86 (Ø 0.85 DRILL)
COPPER PLATING	0.025 MIN
SnPb PLATING	0.005-0.015

\* SEE PRINT 58351 FOR ADDITIONAL PCB INFO.

mat'l code				tolerances unless otherwise specified		CUSTOMER		 www.fciconnect.com	
ltr	ecn no.	dr	date	linear		COPY		title	
AG	-	-	-	angles		projection		HEADER - SELECT LOAD STR. P.F. EXT. 8x12	
				dr	E. KROPER.	1/10/01	product family		code
				enrg	J. VOLSTORF	1/10/01	METRAL 1000		213
				chr	J. VOLSTORF	1/10/01	size	dwg no	sheet
				appd	J. VOLSTORF	1/10/01	63784		4
sheet index	revision sheet						A		

Pro/E

coge code 22526

**PDM: Rev:AG**

STATUS: **Released**

Printed: Feb 10, 2006

Tous droits strictement réservés. Reproduction ou communication o des tiers interdite sous quelque forme que ce soit sans autorisation écrite du propriétaire. Propriete de c FCI. Droits de reproduction FCI.

All rights strictly reserved. Reproduction or issue to third parties in any form whatever is not permitted without written authority from the proprietor. Property of FCI. Copyright FCI.

**FCI**

A

B

METRAL P/N	ROW	CONTACT CODE											
		1	2	3	4	5	6	7	8	9	10	11	12
63784-X001 ** FOR LEAD FREE SEE NOTE 18	H	1	1	1	1	1	1	1	1	1	1	1	1
	G	1	1	1	1	1	1	3	3	3	1	1	1
	F	1	1	1	1	1	1	1	1	1	1	1	1
	E	1	1	1	1	1	1	1	3	3	3	1	1
	D	1	1	1	1	1	1	1	1	1	1	1	1
	C	1	1	1	1	1	1	1	1	1	1	1	1
	B	1	1	1	1	1	1	1	1	1	1	1	1
	A	1	1	1	1	1	1	1	1	1	1	1	1
GND	1	1	1	1	1	1	1	1	1	1	1	1	

METRAL P/N	ROW	CONTACT CODE											
		1	2	3	4	5	6	7	8	9	10	11	12
63784-X002 *RPU FOR LEAD FREE SEE NOTE 18	H	5	5	5	5	5	5	5	5	5	5	5	5
	G	5	5	5	5	5	5	5	5	5	5	5	5
	F	5	5	5	5	5	5	5	5	5	5	5	5
	E	5	5	5	5	5	5	5	5	5	5	5	5
	D	1	1	1	1	1	1	1	1	1	1	1	1
	C	1	1	1	1	1	1	1	1	1	1	1	1
	B	1	1	1	1	1	1	1	1	1	1	1	1
	A	1	1	1	1	1	1	1	1	1	1	1	1
GND	1	1	1	1	1	1	1	1	1	1	1	1	

METRAL P/N	ROW	CONTACT CODE											
		1	2	3	4	5	6	7	8	9	10	11	12
63784-X003 *RPU FOR LEAD FREE SEE NOTE 18	H	1	1	1	1	1	1	1	1	1	1	1	1
	G	1	1	1	1	1	1	1	1	1	1	1	1
	F	1	1	1	1	1	1	1	1	1	1	1	1
	E	5	5	5	5	5	5	5	5	5	5	5	5
	D	5	5	5	5	5	5	5	5	5	5	5	5
	C	5	5	5	5	5	5	5	5	5	5	5	5
	B	5	5	5	5	5	5	5	5	5	5	5	5
	A	5	5	5	5	5	5	5	5	5	5	5	5
GND	1	1	1	1	1	1	1	1	1	1	1	1	

METRAL P/N	ROW	CONTACT CODE											
		1	2	3	4	5	6	7	8	9	10	11	12
63784-X004 ** FOR LEAD FREE SEE NOTE 18	H	1	1	1	1	1	1	1	1	1	1	1	1
	G	1	1	1	1	1	1	3	3	3	3	1	1
	F	1	1	1	1	1	1	1	1	1	1	1	1
	E	1	1	1	1	1	1	1	3	3	3	3	1
	D	1	1	1	1	1	1	1	1	1	1	1	1
	C	1	1	1	1	1	1	1	1	1	1	1	1
	B	1	1	1	1	1	1	1	1	1	1	1	1
	A	1	1	1	1	1	1	1	1	1	1	1	1
GND	1	1	1	1	1	1	1	1	1	1	1	1	

\* REAR PLUG-UP CODES  
\*\* CANNOT BE MATED TO A METRAL 4000 RECEPTACLE

METRAL P/N	ROW	CONTACT CODE											
		1	2	3	4	5	6	7	8	9	10	11	12
63784-X005 *RPU FOR LEAD FREE SEE NOTE 18	H	5	5	5	5	5	5	5	5	5	5	5	5
	G	5	5	5	5	5	5	5	5	5	5	5	5
	F	5	5	5	5	5	5	5	5	5	5	5	5
	E	5	5	5	5	5	5	5	5	5	5	5	5
	D	1	1	1	1	1	1	1	1	1	1	1	1
	C	1	1	1	1	1	1	1	1	1	1	1	1
	B	1	1	1	1	1	1	1	1	1	1	1	1
	A	1	1	1	1	1	1	1	1	1	1	1	1
GND	1	1	1	1	1	1	1	1	1	1	1	1	

METRAL P/N	ROW	CONTACT CODE											
		1	2	3	4	5	6	7	8	9	10	11	12
63784-X006 *RPU ** FOR LEAD FREE SEE NOTE 18	H	5	5	5	5	5	5	5	5	5	5	5	5
	G	5	5	5	5	5	5	5	5	5	5	5	5
	F	5	5	5	5	5	5	5	5	5	5	5	5
	E	5	5	5	5	5	5	5	5	5	5	5	5
	D	19	19	19	19	19	19	19	19	19	19	19	19
	C	1	1	1	1	1	1	1	1	1	1	1	1
	B	1	1	1	1	1	1	1	1	1	1	1	1
	A	1	1	1	1	1	1	1	1	1	1	1	1
GND	1	1	1	1	1	1	1	1	1	1	1	1	

METRAL P/N	ROW	CONTACT CODE											
		1	2	3	4	5	6	7	8	9	10	11	12
63784-X007 FOR LEAD FREE SEE NOTE 18	H	2	2	2	2	2	2	2	2	2	2	2	2
	G	2	2	2	2	2	2	2	2	2	2	2	2
	F	2	2	2	2	2	2	2	2	2	2	2	2
	E	3	1	2	2	2	2	2	2	2	2	2	2
	D	2	2	2	2	2	2	2	2	2	2	2	3
	C	2	2	2	2	2	2	2	2	2	2	2	2
	B	2	2	2	2	2	2	2	2	2	2	2	2
	A	2	2	2	2	2	2	2	2	2	2	2	2
GND	2	2	2	2	2	2	2	2	2	2	2	2	


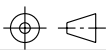
METRAL P/N	ROW	CONTACT CODE											
		1	2	3	4	5	6	7	8	9	10	11	12
63784-X008 FOR LEAD FREE SEE NOTE 18	H	2	2	2	2	2	2	2	2	1	1	1	1
	G	2	2	2	2	2	2	2	2	2	2	2	2
	F	2	2	2	2	2	2	2	2	2	2	2	2
	E	2	2	2	2	2	2	2	2	2	2	2	2
	D	2	2	2	2	2	2	2	2	2	2	2	2
	C	2	2	2	2	2	2	2	2	2	2	2	2
	B	2	2	2	2	2	2	2	2	2	2	2	2
	A	2	2	2	2	2	2	2	2	2	2	2	2
GND	2	2	2	2	2	2	2	2	2	2	2	2	

METRAL P/N	ROW	CONTACT CODE											
		1	2	3	4	5	6	7	8	9	10	11	12
63784-X009 *RPU FOR LEAD FREE SEE NOTE 18	H	49	49	49	49	49	49	49	49	49	49	49	49
	G	49	49	49	49	49	49	49	49	49	49	49	49
	F	49	49	49	49	49	49	49	49	49	49	49	49
	E	49	49	49	49	49	49	49	49	49	49	49	49
	D	49	49	49	49	49	49	49	49	49	49	49	49
	C	49	49	49	49	49	49	49	49	49	49	49	49
	B	49	49	49	49	49	49	49	49	49	49	49	49
	A	35	49	49	49	49	49	49	49	49	49	49	49
GND	36	36	36	36	36	36	36	36	36	36	36	36	

METRAL P/N	ROW	CONTACT CODE											
		1	2	3	4	5	6	7	8	9	10	11	12
63784-X010 FOR LEAD FREE SEE NOTE 18	H	2	2	2	2	2	2	2	1	2	2	2	2
	G	2	2	2	2	2	2	2	1	2	2	2	2
	F	2	2	2	2	2	2	2	2	2	2	2	2
	E	2	2	2	2	2	2	2	1	2	2	2	2
	D	2	2	2	2	2	2	2	1	2	2	2	2
	C	2	2	2	2	2	2	2	2	2	2	2	2
	B	2	2	2	2	2	2	2	2	2	2	2	2
	A	2	2	2	2	2	2	2	1	2	2	2	2
GND	2	2	2	2	2	2	2	2	2	2	2	2	

METRAL P/N	ROW	CONTACT CODE											
		1	2	3	4	5	6	7	8	9	10	11	12
63784-X011 FOR LEAD FREE SEE NOTE 18	H	3	3	3	3	3	3	3	3	3	3	3	3
	G	3	3	3	3	3	3	3	3	3	3	3	2
	F	3	3	3	3	3	3	3	3	3	3	3	3
	E	3	3	3	3	3	3	3	3	3	3	3	3
	D	3	3	3	3	3	3	3	3	3	3	3	3
	C	3	3	3	3	3	3	3	3	3	3	3	3
	B	3	3	3	3	3	3	3	3	3	3	3	3
	A	3	3	3	3	3	3	3	3	3	3	3	3
GND	2	2	2	2	2	2	2	2	2	2	2	2	

METRAL P/N	ROW	CONTACT CODE											
		1	2	3	4	5	6	7	8	9	10	11	12
63784-X012 *RPU ** FOR LEAD FREE SEE NOTE 18	H	45	45	45	45	45	45	45	45	45	45	45	22
	G	45	45	45	45	45	45	45	45	45	45	45	45
	F	22	45	45	45	45	45	45	45	45	45	45	45
	E	45	45	45	45	45	45	45	45	45	45	45	45
	D	45	45	45	45	45	45	45	45	45	45	45	45
	C	45	45	45	45	45	45	45	45	45	45	45	45
	B	45	45	45	45	45	45	45	45	45	45	45	45
	A	47	47	47	47	47	47	47	47	47	47	47	47
GND	22	22	22	22	22	22	22	22	22	22	22	22	

mat'l code		--	tolerances unless otherwise specified		CUSTOMER			www.fciconnect.com			
ltr	ecn no.	dr	date	linear	projection	COPY		title	HEADER - SELECT LOAD STR. P.F. EXT. 8x12		
AG	-	-	-	angles				product family	METRAL 1000	code	
				dr	E. KROPER.	1/10/01					

Tous droits strictement réservés. Reproduction ou communication a des tiers interdite sous quelque forme que ce soit sans autorisation écrite du propriétaire. Propriété de c.FCI. Droits de reproduction FCI.

**FCI**

All rights strictly reserved. Reproduction or issue to third parties in any form whatever is not permitted without written authority from the proprietor. Property of FCI. Copyright FCI.

METRAL P/N	ROW	CONTACT CODE													
		1	2	3	4	5	6	7	8	9	10	11	12		
63784-X013 FOR LEAD FREE SEE NOTE 18	H	2	2	2	2	2	2	2	2	2	2	2	2	2	2
	G	2	2	2	2	2	2	2	2	2	2	2	2	2	2
	F	2	2	2	2	2	2	2	2	2	2	2	2	2	2
	E	3	2	2	2	1	2	2	2	2	2	2	2	2	2
	D	2	2	2	2	2	2	2	2	2	2	2	2	2	2
	C	2	2	2	2	2	2	2	2	2	2	2	2	2	2
	B	2	2	2	2	2	2	2	2	2	2	2	2	2	2
	A	2	2	2	2	2	2	2	2	2	2	2	2	2	2
	GND	2	2	2	2	2	2	2	2	2	2	2	2	2	2

METRAL P/N	ROW	CONTACT CODE												
		1	2	3	4	5	6	7	8	9	10	11	12	
63784-X014 ** FOR LEAD FREE SEE NOTE 18	H	3	3	3	3	3	3	3	3	3	3	3	3	1
	G	3	3	3	3	3	3	3	3	3	3	3	3	3
	F	1	3	3	3	3	3	3	3	3	3	3	3	3
	E	3	3	3	3	3	3	3	3	3	3	3	3	3
	D	3	3	3	3	3	3	3	3	3	3	3	3	3
	C	3	3	3	3	3	3	3	3	3	3	3	3	3
	B	3	3	3	3	3	3	3	3	3	3	3	3	3
	A	19	19	19	19	19	19	19	19	19	19	19	19	19
	GND	1	1	1	1	1	1	1	1	1	1	1	1	1

METRAL P/N	ROW	CONTACT CODE												
		1	2	3	4	5	6	7	8	9	10	11	12	
63784-X015 FOR LEAD FREE SEE NOTE 18	H	2	2	2	2	2	2	2	2	2	2	2	2	2
	G	2	2	2	2	2	2	2	2	2	2	2	2	2
	F	3	3	3	3	3	3	3	3	3	3	3	3	3
	E	2	2	2	2	2	2	2	2	2	2	2	2	2
	D	2	2	2	2	2	2	2	2	2	2	2	2	2
	C	3	3	3	3	3	3	3	3	3	3	3	3	3
	B	2	2	2	2	2	2	2	2	2	2	2	2	2
	A	1	2	2	2	2	2	2	2	2	2	2	2	2
	GND	2	2	2	2	2	2	2	2	2	2	2	2	2

METRAL P/N	ROW	CONTACT CODE												
		1	2	3	4	5	6	7	8	9	10	11	12	
63784-X016 *RPU FOR LEAD FREE SEE NOTE 18	H	49	49	49	49	49	49	49	49	49	49	49	49	49
	G	49	49	49	49	49	49	49	49	49	49	49	49	49
	F	41	41	41	41	41	41	41	41	41	41	41	41	41
	E	49	49	49	49	49	49	49	49	49	49	49	49	49
	D	49	49	49	49	49	49	49	49	49	49	49	49	49
	C	41	41	41	41	41	41	41	41	41	41	41	41	41
	B	49	49	49	49	49	49	49	49	49	49	49	49	49
	A	48	49	49	49	49	49	49	49	49	49	49	49	49
	GND	49	49	49	49	49	49	49	49	49	49	49	49	49

METRAL P/N	ROW	CONTACT CODE												
		1	2	3	4	5	6	7	8	9	10	11	12	
63784-X017 ** FOR LEAD FREE SEE NOTE 18	H	2	2	2	2	2	2	2	2	2	2	2	2	2
	G	4	4	4	4	4	4	4	4	4	2	2	2	2
	F	2	2	2	2	2	2	2	2	2	2	2	2	2
	E	2	2	2	2	2	2	2	2	2	2	2	2	2
	D	4	4	4	4	4	4	4	4	4	2	2	2	2
	C	2	2	2	2	2	2	2	2	2	2	2	2	2
	B	2	2	2	2	2	2	2	2	2	2	2	2	2
	A	4	4	4	4	4	4	4	4	4	2	2	2	2
	GND	1	1	1	1	1	1	1	1	1	1	1	1	1

METRAL P/N	ROW	CONTACT CODE												
		1	2	3	4	5	6	7	8	9	10	11	12	
63784-X018 FOR LEAD FREE SEE NOTE 18	H	2	2	2	2	2	2	2	2	2	2	2	2	1
	G	2	2	2	2	2	2	2	2	2	2	2	2	2
	F	2	2	2	2	2	2	2	2	2	2	2	2	2
	E	2	2	2	2	2	2	2	2	2	2	2	2	2
	D	2	2	2	2	2	2	2	2	2	2	2	2	2
	C	2	2	2	2	2	2	2	2	2	2	2	2	2
	B	2	2	2	2	2	2	2	2	2	2	2	2	2
	A	2	2	2	2	2	2	2	2	2	2	2	2	2
	GND	1	1	1	1	1	1	1	1	1	1	1	1	1

METRAL P/N	ROW	CONTACT CODE												
		1	2	3	4	5	6	7	8	9	10	11	12	
63784-X019 *RPU FOR LEAD FREE SEE NOTE 18	H	3	3	3	3	3	3	3	3	3	3	3	3	2
	G	3	3	3	3	3	3	3	3	3	3	3	3	3
	F	3	3	3	3	3	3	3	3	3	3	3	3	3
	E	11	11	11	11	11	11	11	11	11	11	11	11	11
	D	41	41	41	41	41	41	41	41	41	41	41	41	41
	C	24	24	24	24	24	24	24	24	24	24	24	24	24
	B	41	41	41	41	41	41	41	41	41	41	41	41	41
	A	24	24	24	24	24	24	24	24	24	24	24	24	24
	GND	49	49	49	49	49	49	49	49	49	49	49	49	49

METRAL P/N	ROW	CONTACT CODE												
		1	2	3	4	5	6	7	8	9	10	11	12	
63784-X020 *RPU FOR LEAD FREE SEE NOTE 18	H	3	3	3	3	3	3	3	3	3	3	3	3	3
	G	3	3	3	3	3	3	3	3	3	3	3	3	3
	F	-	3	-	3	-	3	-	3	-	3	-	3	-
	E	41	41	41	41	41	41	41	41	41	41	41	41	41
	D	37	37	37	37	37	37	37	37	37	37	37	37	37
	C	50	50	50	50	50	50	50	50	50	50	50	50	50
	B	37	37	37	37	37	37	37	37	37	37	37	37	37
	A	50	50	50	50	50	50	50	50	50	50	50	50	50
	GND	6	6	6	6	6	6	6	6	6	6	6	6	6

METRAL P/N	ROW	CONTACT CODE												
		1	2	3	4	5	6	7	8	9	10	11	12	
63784-X021 *RPU FOR LEAD FREE SEE NOTE 18	H	3	3	3	3	3	3	3	3	3	3	3	3	2
	G	3	3	3	3	3	3	3	3	3	3	3	3	3
	F	-	3	-	3	-	3	-	3	-	3	-	3	-
	E	41	41	41	41	41	41	41	41	41	41	41	41	41
	D	37	37	37	37	37	37	37	37	37	37	37	37	37
	C	50	50	50	50	50	50	50	50	50	50	50	50	50
	B	37	37	37	37	37	37	37	37	37	37	37	37	37
	A	50	50	50	50	50	50	50	50	50	50	50	50	50
	GND	6	6	6	6	6	6	6	6	6	6	6	6	6

METRAL P/N	ROW	CONTACT CODE												
		1	2	3	4	5	6	7	8	9	10	11	12	
63784-X022 *RPU FOR LEAD FREE SEE NOTE 18	H	3	3	3	3	3	3	3	3	3	3	3	3	3
	G	3	3	3	3	3	3	3	3	3	3	3	3	3
	F	-	3	-	3	-	3	-	3	-	3	-	3	-
	E	41	41	41	41	41	41	41	41	41	41	41	41	41
	D	37	37	37	37	37	37	37	37	37	37	37	37	37
	C	50	50	50	50	50	50	50	50	50	50	50	50	50
	B	37	37	37	37	37	37	37	37	37	37	37	37	37
	A	50	50	50	50	50	50	50	50	50	50	50	50	50
	GND	6	6	6	6	6	6	6	6	6	6	6	6	6

METRAL P/N	ROW	CONTACT CODE												
		1	2	3	4	5	6	7	8	9	10	11	12	
63784-X023 *RPU FOR LEAD FREE SEE NOTE 18	H	3	3	3	3	3	3	3	3	3	3	3	3	3
	G	3	3	3	3	3	3	3	3	3	3	3	3	3
	F	-	3	-	3	-	3	-	3	-	3	-	3	-
	E	3	3	3	3	41	41	41	41	41	41	41	41	41
	D	3	3	3	3	37	37	37	37	37	37	37	37	37
	C	3	3	3	3	50	50	50	50	50	50	50	50	50
	B	3	3	3	3	37	37	37	37	37	37	37	37	37
	A	3	3	3	3	50	50	50	50	50	50	50	50	50
	GND	2	2	2	2	6	6	6	6	6	6	6	6	6

METRAL P/N	ROW	CONTACT CODE												
		1	2	3	4	5	6	7	8	9	10	11	12	
63784-X024 *RPU FOR LEAD FREE SEE NOTE 18	H	3	3	3	3	3	3	3	3	3	3	3	3	3
	G	3	3	3	3	3</								



Tous droits strictement réservés. Reproduction ou communication o des tiers interdite sous quelque forme que ce soit sans autorisation écrite du propriétaire. Propriété de c FCI. Droits de reproduction FCI.

All rights strictly reserved. Reproduction or issue to third parties in any form whatever is not permitted without written authority from the proprietor. Property of FCI. Copyright FCI.

**FCI**

METRAL P/N	ROW	CONTACT CODE											
		1	2	3	4	5	6	7	8	9	10	11	12
63784-X025 **RPU  FOR LEAD FREE SEE NOTE 18	H	3	3	3	3	3	3	3	3	3	3	3	3
	G	3	3	3	3	3	3	3	3	3	3	3	3
	F	-	3	-	3	-	3	-	3	-	3	-	3
	E	3	3	3	3	3	3	3	3	3	3	41	41
	D	3	3	3	3	3	3	3	3	3	3	37	37
	C	3	3	3	3	3	3	3	3	3	3	50	50
	B	3	3	3	3	3	3	3	3	3	3	37	37
	A	3	3	3	3	3	3	3	3	3	3	50	50
	GND	2	2	2	2	2	2	2	2	2	2	6	6

METRAL P/N	ROW	CONTACT CODE											
		1	2	3	4	5	6	7	8	9	10	11	12
63784-X026 *RPU  FOR LEAD FREE SEE NOTE 18	H	3	3	3	3	3	3	3	3	3	3	3	3
	G	3	3	3	3	3	3	3	3	3	3	3	3
	F	-	3	-	3	-	3	-	3	-	3	-	3
	E	3	3	3	3	3	3	41	41	41	41	41	41
	D	3	3	3	3	3	3	37	37	37	37	37	37
	C	3	3	3	3	3	3	50	50	50	50	50	50
	B	3	3	3	3	3	3	37	37	37	37	37	37
	A	3	3	3	3	3	3	50	50	50	50	50	50
	GND	2	2	2	2	2	2	6	6	6	6	6	6

METRAL P/N	ROW	CONTACT CODE											
		1	2	3	4	5	6	7	8	9	10	11	12
63784-X027  FOR LEAD FREE SEE NOTE 18	H	3	3	3	3	3	3	3	3	3	3	3	3
	G	3	3	3	3	3	3	3	3	3	3	3	3
	F	-	3	-	3	-	3	-	3	-	3	-	3
	E	3	3	3	3	3	3	3	3	3	3	3	3
	D	3	3	3	3	3	3	3	3	3	3	3	3
	C	3	3	3	3	3	3	3	3	3	3	3	3
	B	3	3	3	3	3	3	3	3	3	3	3	3
	A	3	3	3	3	3	3	3	3	3	3	3	3
	GND	2	2	2	2	2	2	2	2	2	2	2	2

METRAL P/N	ROW	CONTACT CODE											
		1	2	3	4	5	6	7	8	9	10	11	12
63784-X028 ***RPU  FOR LEAD FREE SEE NOTE 18	H	5	5	5	5	5	5	5	5	5	5	5	5
	G	5	5	5	5	5	5	5	5	5	5	5	5
	F	5	5	5	5	5	5	5	5	5	5	5	5
	E	5	5	5	5	5	5	5	5	5	5	5	5
	D	1	1	1	1	1	1	1	1	1	1	1	1
	C	1	1	1	1	1	1	1	1	1	1	1	1
	B	1	1	1	1	1	1	1	1	1	1	1	1
	A	1	1	1	1	1	1	1	1	1	1	1	1
	GND	1	1	1	1	1	1	1	1	1	1	1	1

METRAL P/N	ROW	CONTACT CODE											
		1	2	3	4	5	6	7	8	9	10	11	12
63784-X029 ***RPU  FOR LEAD FREE SEE NOTE 18	H	1	1	1	1	1	1	1	1	1	1	1	1
	G	1	1	1	1	1	1	1	1	1	1	1	1
	F	1	1	1	1	1	1	1	1	1	1	1	1
	E	5	5	5	5	5	5	5	5	5	5	5	5
	D	5	5	5	5	5	5	5	5	5	5	5	5
	C	5	5	5	5	5	5	5	5	5	5	5	5
	B	5	5	5	5	5	5	5	5	5	5	5	5
	A	5	5	5	5	5	5	5	5	5	5	5	5
	GND	1	1	1	1	1	1	1	1	1	1	1	1

METRAL P/N	ROW	CONTACT CODE											
		1	2	3	4	5	6	7	8	9	10	11	12
63784-X030 ***RPU  FOR LEAD FREE SEE NOTE 18	H	5	5	5	5	5	5	1	1	1	1	1	1
	G	5	5	5	5	5	5	1	1	1	1	1	1
	F	5	5	5	5	5	5	1	1	1	1	1	1
	E	5	5	5	5	5	5	1	1	1	1	1	1
	D	1	1	1	1	1	1	1	1	1	1	1	1
	C	1	1	1	1	1	1	1	1	1	1	1	1
	B	1	1	1	1	1	1	1	1	1	1	1	1
	A	1	1	1	1	1	1	1	1	1	1	1	1
	GND	1	1	1	1	1	1	1	1	1	1	1	1

METRAL P/N	ROW	CONTACT CODE											
		1	2	3	4	5	6	7	8	9	10	11	12
63784-X031 ***RPU  FOR LEAD FREE SEE NOTE 18	H	5	5	5	5	5	5	5	5	5	5	5	5
	G	5	5	5	5	5	5	5	5	5	5	5	5
	F	5	5	5	5	5	5	5	5	5	5	5	5
	E	5	5	5	5	5	5	5	5	5	5	5	5
	D	19	19	19	19	19	19	19	19	19	19	19	19
	C	1	1	1	1	1	1	1	1	1	1	1	1
	B	1	1	1	1	1	1	1	1	1	1	1	1
	A	1	1	1	1	1	1	1	1	1	1	1	1
	GND	1	1	1	1	1	1	1	1	1	1	1	1


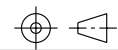
METRAL P/N	ROW	CONTACT CODE											
		1	2	3	4	5	6	7	8	9	10	11	12
63784-X032 *RPU **  FOR LEAD FREE SEE NOTE 18	H	3	3	3	3	3	3	3	3	3	19	19	19
	G	3	3	3	3	3	3	3	3	3	19	19	19
	F	-	3	-	3	-	3	-	3	-	3	-	3
	E	41	41	41	41	41	41	41	41	3	3	19	19
	D	37	37	37	37	37	37	37	37	19	19	3	3
	C	50	50	50	50	50	50	50	50	3	3	19	19
	B	37	37	37	37	37	37	37	37	3	3	19	19
	A	50	50	50	50	50	50	50	50	3	3	19	19
	GND	6	6	6	6	6	6	6	6	2	2	2	2

METRAL P/N	ROW	CONTACT CODE											
		1	2	3	4	5	6	7	8	9	10	11	12
63784-X033 *RPU  FOR LEAD FREE SEE NOTE 18	H	3	3	3	3	3	3	3	3	3	3	3	3
	G	3	3	3	3	3	3	3	3	3	3	3	3
	F	-	3	-	3	-	3	-	3	-	3	-	3
	E	3	3	41	41	41	41	41	41	3	3	3	3
	D	3	3	37	37	37	37	37	37	3	3	3	3
	C	3	3	50	50	50	50	50	50	3	3	3	3
	B	3	3	37	37	37	37	37	37	3	3	3	3
	A	3	3	50	50	50	50	50	50	3	3	3	3
	GND	2	2	6	6	6	6	6	6	2	2	2	2

METRAL P/N	ROW	CONTACT CODE											
		1	2	3	4	5	6	7	8	9	10	11	12
63784-X034  FOR LEAD FREE SEE NOTE 18	H	2	2	2	2	2	2	2	2	2	2	2	2
	G	2	2	2	2	2	2	2	2	2	2	2	2
	F	4	4	2	2	2	2	2	2	2	2	2	2
	E	2	2	2	2	2	2	2	2	2	2	2	2
	D	2	2	2	2	2	2	2	2	2	2	2	2
	C	2	2	2	2	2	2	2	2	2	2	2	2
	B	2	2	2	2	2	2	2	2	2	2	2	2
	A	2	2	2	2	2	2	2	2	2	2	2	2
	GND	2	2	2	2	2	2	2	2	2	2	2	2

METRAL P/N	ROW	CONTACT CODE											
		1	2	3	4	5	6	7	8	9	10	11	12
63784-X035  FOR LEAD FREE SEE NOTE 18	H	2	2	2	2	2	2	2	2	2	2	2	2
	G	2	2	2	2	2	2	2	2	2	2	2	2
	F	4	4	2	2	2	2	1	2	2	2	2	2
	E	2	2	2	2	2	2	2	2	2	2	2	2
	D	2	2	2	2	2	2	2	2	2	2	2	2
	C	2	2	2	2	2	2	2	2	2	2	2	2
	B	2	2	2	2	2	2	2	2	2	2	2	2
	A	2	2	2	2	2	2	2	2	2	2	2	2
	GND	2	2	2	2	2	2	2	2	2	2	2	2

METRAL P/N	ROW	CONTACT CODE											
		1	2	3	4	5	6	7	8	9	10	11	12
63784-X036  FOR LEAD FREE SEE NOTE 18	H	2	2	2	2	2	2	3	1	1	3	1	1
	G	2	2	2	2	2	2	3	1	1	3	1	1
	F	2	2	2	2	2	2	3	1	1	3	1	1
	E	3	2	2	2	2	2	3	1	1	3	1	1
	D	3	2	2	2	2	2	3	1	1	3	1	1
	C	3	2	2	2	2	2	3	1	1	3	1	1
	B	3	2	3	2	2	2	3	1	1	3	1	1
	A	3	2	2	2	2	2	1	1	3	1	1	1
	GND	2	2	2	2	2	2	2	2	2	2	2	2

mat'l code		--		tolerances unless otherwise specified		CUSTOMER		 www.fciconnect.com	
ltr	ecn no.	dr	date	linear	projection	COPY			
AG	-	-	-	angles		title		HEADER - SELECT LOAD STR. P.F. EXT	

Tous droits strictement réservés. Reproduction ou communication a des tiers interdite sous quelque forme que ce soit sans autorisation écrite du propriétaire. Propriété de c FCI. Droits de reproduction FCI.

All rights strictly reserved. Reproduction or issue to third parties in any form whatever is not permitted without written authority from the proprietor. Property of FCI. Copyright FCI.

**A**  
**FCI**

METRAL P/N	ROW	CONTACT CODE											
		1	2	3	4	5	6	7	8	9	10	11	12
63784-X037 FOR LEAD FREE SEE NOTE 18	H	3	2	2	3	2	3	2	2	2	2	3	2
	G	3	2	2	3	2	3	2	3	3	2	3	2
	F	3	2	2	3	3	3	3	2	2	3	3	2
	E	3	2	2	3	2	3	2	3	2	2	3	2
	D	3	2	2	3	2	3	2	3	2	2	3	3
	C	3	2	2	3	3	3	3	3	2	3	3	2
	B	3	2	2	3	2	3	2	2	2	2	3	2
	A	3	2	2	3	2	3	2	2	2	2	3	2
	GND	2	2	2	2	2	2	2	2	2	2	2	2

METRAL P/N	ROW	CONTACT CODE											
		1	2	3	4	5	6	7	8	9	10	11	12
63784-X038 FOR LEAD FREE SEE NOTE 18	H	2	2	2	19	-	19	-	2	-	2	-	19
	G	2	2	2	19	-	19	-	2	-	2	-	19
	F	2	-	2	19	-	19	-	-	-	2	-	19
	E	2	2	2	19	-	19	-	2	-	2	-	19
	D	2	2	2	19	-	19	-	2	-	2	-	19
	C	2	2	2	19	-	19	-	2	-	2	-	19
	B	2	2	2	19	-	19	-	2	-	2	-	19
	A	2	2	2	19	-	19	-	2	-	2	-	19
	GND	-	-	-	-	-	-	-	-	-	-	-	-

METRAL P/N	ROW	CONTACT CODE											
		1	2	3	4	5	6	7	8	9	10	11	12
63784-X039 FOR LEAD FREE SEE NOTE 18	H	2	2	2	2	2	2	2	2	3	3	3	3
	G	2	2	2	2	2	2	2	2	3	3	3	3
	F	2	2	2	3	2	2	2	2	3	3	3	3
	E	2	2	2	1	2	2	2	2	3	3	3	3
	D	3	1	2	1	2	2	2	2	3	3	3	3
	C	2	2	2	1	2	2	2	2	3	3	3	3
	B	2	2	2	1	2	2	2	2	3	3	3	3
	A	3	1	2	1	2	2	2	2	3	3	3	3
	GND	1	1	1	1	1	1	1	1	1	1	1	1

METRAL P/N	ROW	CONTACT CODE											
		1	2	3	4	5	6	7	8	9	10	11	12
63784-X040 FOR LEAD FREE SEE NOTE 18	H	3	3	3	3	3	3	2	2	2	2	2	2
	G	3	3	3	3	3	3	2	2	2	2	2	2
	F	3	3	3	3	3	3	2	2	2	2	2	2
	E	3	3	3	3	3	3	2	2	2	2	2	2
	D	3	3	3	3	3	3	2	2	2	2	2	2
	C	3	3	3	3	3	3	2	2	2	2	2	2
	B	3	3	3	3	3	3	2	2	2	2	2	2
	A	3	3	3	3	3	3	2	2	2	2	2	2
	GND	1	1	1	1	1	1	1	1	1	1	1	1

METRAL P/N	ROW	CONTACT CODE											
		1	2	3	4	5	6	7	8	9	10	11	12
63784-X041 FOR LEAD FREE SEE NOTE 18	H	2	2	2	2	2	2	2	2	2	2	1	2
	G	2	2	2	2	2	2	2	2	2	2	1	2
	F	2	2	2	2	2	2	2	2	2	2	1	2
	E	2	2	2	2	2	2	2	2	2	2	2	2
	D	2	2	2	2	2	2	2	2	2	2	3	2
	C	2	2	2	2	2	2	2	2	2	2	3	2
	B	2	2	2	2	2	2	2	2	2	2	3	2
	A	2	2	2	2	2	2	2	2	2	2	1	2
	GND	1	1	1	1	1	1	1	1	1	1	1	1

METRAL P/N	ROW	CONTACT CODE											
		1	2	3	4	5	6	7	8	9	10	11	12
63784-X042 FOR LEAD FREE SEE NOTE 18	H	1	2	2	2	2	2	1	2	2	2	2	3
	G	2	2	2	2	2	2	2	2	2	2	2	3
	F	2	2	2	2	2	2	2	2	2	2	2	3
	E	2	2	2	2	2	2	2	2	2	2	2	3
	D	2	2	2	2	2	2	2	2	2	2	3	3
	C	2	2	2	2	2	2	2	2	2	2	3	3
	B	2	2	2	2	2	2	2	2	2	2	3	3
	A	2	2	2	2	2	2	2	2	2	2	2	3
	GND	1	1	1	1	1	1	1	1	1	1	1	1

METRAL P/N	ROW	CONTACT CODE											
		1	2	3	4	5	6	7	8	9	10	11	12
63784-X043 FOR LEAD FREE SEE NOTE 18	H	2	2	2	2	1	2	1	2	2	2	2	3
	G	2	2	2	2	1	2	2	2	2	2	2	3
	F	2	2	2	2	1	2	2	2	2	2	2	3
	E	2	2	2	2	1	2	2	2	2	2	2	3
	D	2	2	2	2	3	2	2	2	2	2	2	3
	C	2	2	2	2	3	2	2	2	2	2	2	3
	B	2	2	2	2	3	2	2	2	2	2	2	3
	A	2	2	2	2	3	2	2	2	2	2	2	3
	GND	1	1	1	1	1	1	1	1	1	1	1	1

mat'l code		--		tolerances unless otherwise specified		CUSTOMER		<b>A</b> <b>FCI</b> www.fciconnect.com		
ltr	ecn no.	dr	date	linear	COPY		projection	title		
AG								HEADER - SELECT LOAD STR. P.F. EXT. 8x12		
				angles	dr	E. KROPER.	1/10/01	product family	METRAL 1000	
					enrg	J. VOLSTORF	1/10/01		code	213
					chr	J. VOLSTORF	1/10/01		size	dwg no
					appd	J. VOLSTORF	1/10/01		scale	sheet
sheet index	revision sheet									

Pro/E 3 | coge code 22526 4



Tous droits strictement réservés. Reproduction ou communication o des tiers interdite sous quelque forme que ce soit sans autorisation écrite du propriétaire. Propriete de c FCI. Droits de reproduction FCI.

All rights strictly reserved. Reproduction or issue to third parties in any form whatever is not permitted without written authority from the proprietor. Property of FCI. Copyright FCI.

**A**  
**FCI**

PRODUCT NUMBER
63784-XXXX
63784-XXXXLF

NOTES:

- SEE APPLICATION SPECIFICATION GS-20-010 FOR INFORMATION ON AVAILABLE TOOLING, CURCUIT BOARD DESIGN CONSIDERATIONS, REPAIR PROCEDURES AND PRODUCT OFFERINGS.
- SEE FCI PUBLICATION 950511-028 FOR "ELECTRICAL PERFORMANCE DATA FOR DIFFERENTIAL APPLICATIONS."
- SEE FCI PUBLICATION 950511-028 FOR "ELECTRICAL PERFORMANCE DATA FOR SINGLE-ENDED APPLICATION."
- UNLESS OTHERWISE SPECIFIED, ALL DIMENSIONS AND TOLERANCES ARE IN ACCORDANCE WITH ASME Y14.5M, 1994
- HOUSING MATERIAL: LIQUID CRYSTAL POLYMER, 30% GLASS FILLED, FLAME RETARDANT PER UL 94-V0.
- PIN MATERIAL: PHOSPHER BRONZE
- GROUND SPRING MATERIAL: PHOSPHER BRONZE
- PLATING INFORMATION: SEE TABLE
- DIMENSIONAL RESTRICTIONS OF PINS IN HEADERS.  
FOR MATING WITH METRAL 1000 RECEPTACLES  
DIM A : 5.00mm MIN, 8.00mm MAX FOR ROWS A-H  
DIM A : 5.00mm MIN, 5.75mm MAX FOR ROW GND NEXT TO ROW A  
DIM C : 5.00mm MIN, 8.00mm MAX FOR ROWS A-H  
DIM C : 4.60mm MIN, 6.30mm MAX FOR ROW GND NEXT TO ROW A  
FOR MATING WITH METRAL 4000 RECEPTACLES  
DIM A : 5.00mm MIN, 6.50mm MAX FOR ROWS A, B, D, E, G & H  
DIM A : 5.00mm MIN, 8.00mm MAX FOR ROW C & F  
DIM A : 5.00mm MIN, 5.75mm MAX FOR ROW GND NEXT TO ROW A  
DIM C : 5.00mm MIN, 7.00mm MAX FOR ROWS A, B, D, E, G & H  
DIM C : 5.00mm MIN, 8.00mm MAX FOR ROW C & F  
DIM C : 4.60mm MIN, 6.30mm MAX FOR ROW GND NEXT TO ROW A
- THE MIN PCB THICKNESS FOR REAR PLUG-UP APPLICATIONS IS 2.9mm SINCE THE COMPLAINT SECTIONS OF THE GROUND SPRING OF THE HEADER DIRECTLY OPOSE THE GROUND SPRING OF THE SHROUD. THE MIN PCB THICKNESS FOR FRONT PLUG-UP ONLY APPLICATIONS IS 1.6mm.
- THESE HOLES ARE NEEDED FOR REAR PLUG-UP DESIGNS USING A SHROUD AND MAY BE OMITTED FOR FRONT PLUG-UP ONLY DESIGNS.
- THE 'CONNECTOR OUTLINE' IS THE MIN OUTLINE REQUIRED. TO DETERMINE THE OUTLINE NECESSARY TO PERMIT THE VARIOUS TYPES OF REPAIR OPERATIONS, SEE APPLICATION SPECIFICATION GS-20-010.
- CURRENT RATING : 1 AMP PER PIN
- TEMPERATURE RANGE : -55°C TO +105°C
- P/N 63784-X YYY

PIN POSITIONS  
PLATING CODE

- AFTER INSERTION INTO CIRCUIT BOARD WITH QUALIFIED TOOL.
- THE PRODUCTS WHERE THE PART NUMBER ENDS IN LF MEET EUROPEAN UNION DIRECTIVES AND OTHER COUNTRY REGULATIONS AS DESCRIBED IN GS-22-008.  
  
ALL PRODUCTS WILL WITHSTAND EXPOSURE TO 260°C FOR 60 SECONDS IN A CONVECTION, INFRA-RED OR VAPOR PHASE REFLOW OVEN.
- EQUIVALENT PRECIOUS METAL PLATINGS MAY BE SUBSTITUTED.

mat'l code				tolerances unless otherwise specified		CUSTOMER		<b>A</b> <b>FCI</b> www.fciconnect.com	
ltr	ecn no.	dr	date	linear	COPY		projection		
AG	-	-	-		projection		title HEADER - SELECT LOAD STR. P.F. EXT. 8x12		
				angles	MM		product family METRAL 1000		code
		dr	E. KROPER.	1/10/01	← MM →		size	dwg no	213
		enrg	J. VOLSTORF	1/10/01	scale 1:1		A		sheet
		chr	J. VOLSTORF	1/10/01			63784		9
		appd	J. VOLSTORF	1/10/01					
sheet index	revision sheet								

Pro/E

coge code 22526

**PDM: Rev:AG**

STATUS: **Released**

Printed: Feb 10, 2006