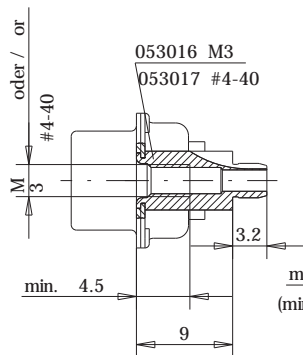
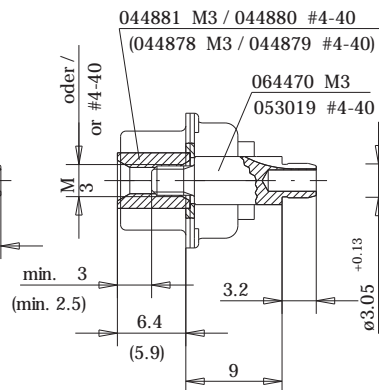


Schnitt A-A / cross section A-A

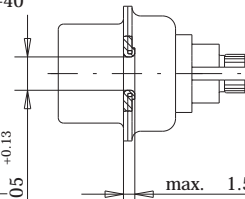
Einpressbolzen
press-fit bolt :



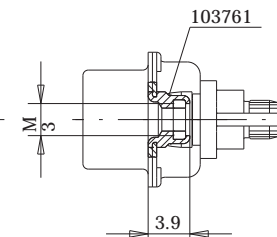
Einpressbolzen / Gewindehülse
press-fit bolt / threaded sleeve :



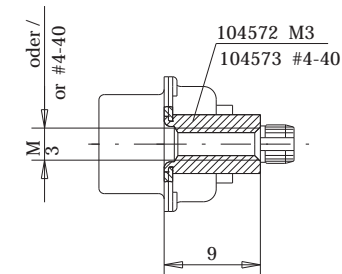
ohne Zubehoer
without accessories :



Nietmutter mit Klemmteil
clamping thread :



Nietmutter / riveted nut :



Zubehör / Accessories

Einpressbolzen / press-fit bolt
Gewindehülse / threaded sleeve

Nietmutter / riveted nut

Nietmutter mit Klemmteil / clamping thread
ohne / without

Schichtaufbau im metallisierten Loch / metal plating of plated-through hole
für Einpresskontakt Zeichnung 114110 / for press-fit contact drawing 114110
für Einpressbolzen Zeichnung 114109 / for press-fit bolt drawing 114109

Ident-Nr./ Part No. :	Refer to table on page 2
Polzahl/ No. of contacts :	Refer to table on page 2
Anschlussart/ Terminal Type :	Pressfit
Anschlusslänge/ Terminal Length :	3.2 mm
Bauart/ Type :	8W8
Anforderungsstufe/ Class :	201=0.8µm (30 µin) Au CONTACT, GOLD/LEAD TERMINAL
Aufdruck/ Logo :	ERNI
Zubehör/ Accessory :	Refer to table on page 2
Sonderausführung/ Special :	Refer to table on page 2

Consider protection memo from DN 34

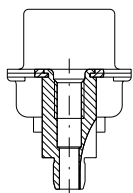
Information:	Tolerances	Scale 2:1	All Dimensions in mm
All rights reserved. Only for information. To insure that this is the latest version of this drawing, please contact one of the ERNI companies before using.	Subject to modification without prior notice. Drawing will not be updated.	Designation	
		TMC-P 8W8-EP36-09.0-8 TMC-P 8W8-EP36-09.0-8	
	Elektroapparate GmbH D-73099 ADELBERG	054881	
c	29.04.1998	1	
Index	Date	M:00021151.SZ	TMCP



Ordering Information

D-Sub Connector High Power Pressfit Vertical Male Assembly Height 9 mm

Number of Pins 8W8

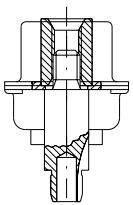


Accessory Termination Side: Pressfit bolt M3

104284

Accessory Termination Side: Pressfit bolt #4-40

063626



Accessory Mating Side: Threaded sleeve M3 Accessory Termination Side: Pressfit bolt

114137

Accessory Mating Side: Threaded sleeve #4-40 Accessory Termination Side: Pressfit bolt

063783

Ordering Information press-in tools

Number of Pins Upper Tool with Quick
Change Device Lower Tool

8W8

220223

220285