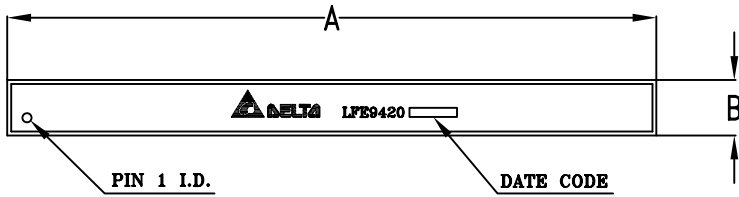




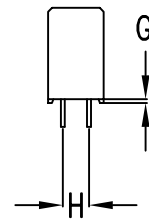
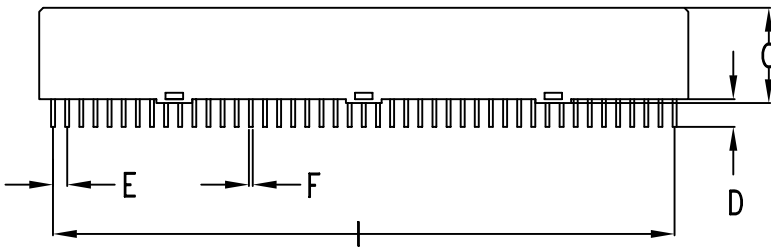
SPECIFICATION FOR APPROVAL

Customer Part No.: Delta Part No.: LFE9420 Part Name: LAN Filter (1000 Base-T Five Port)	Rev.: E
--	-------------

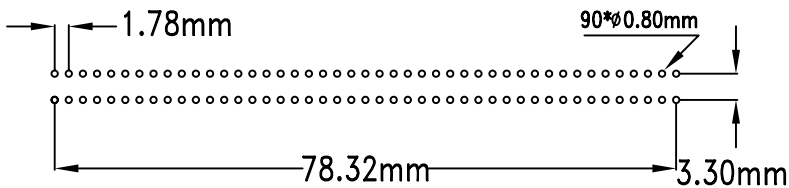
1. Mechanical Dimension:



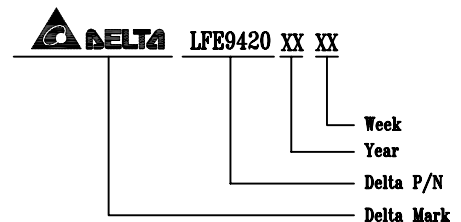
- UNIT: mm/inch
- A = 81.40±0.254/3.205±0.010
 - B = 7.20/0.283 MAX
 - C = 13.50±0.254/0.531±0.010
 - D = 3.00±0.254/0.118±0.010
 - E = 1.78±0.127/0.070±0.005
 - F = 0.40±0.127/0.016±0.005
 - G = 0.50±0.127/0.020±0.005
 - H = 3.30±0.127/0.130±0.005
 - I = 78.32±0.127/3.083±0.005



1-1. Marking and Recommended PWB Layout:



(Component Side)
Suggested PWB Layout



* Marking

Drawn by Sy.Du	Designed by Yee.Ye	Checked by Sf.Yu	Approved by Jorge.Wang
-------------------	-----------------------	---------------------	---------------------------



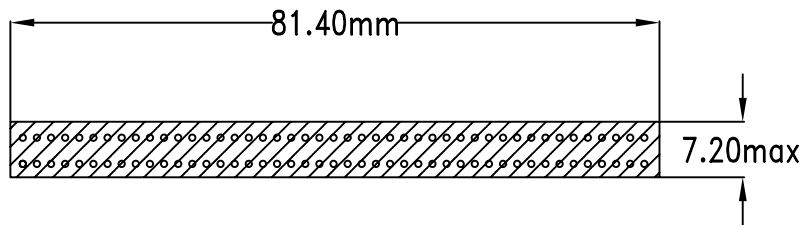
SPECIFICATION FOR APPROVAL

Customer Part No.:
Delta Part No.: LFE9420
Part Name: LAN Filter (1000 Base-T Five Port)

Rev.: E



1-2. Keep-out area:



(Keep-out area)



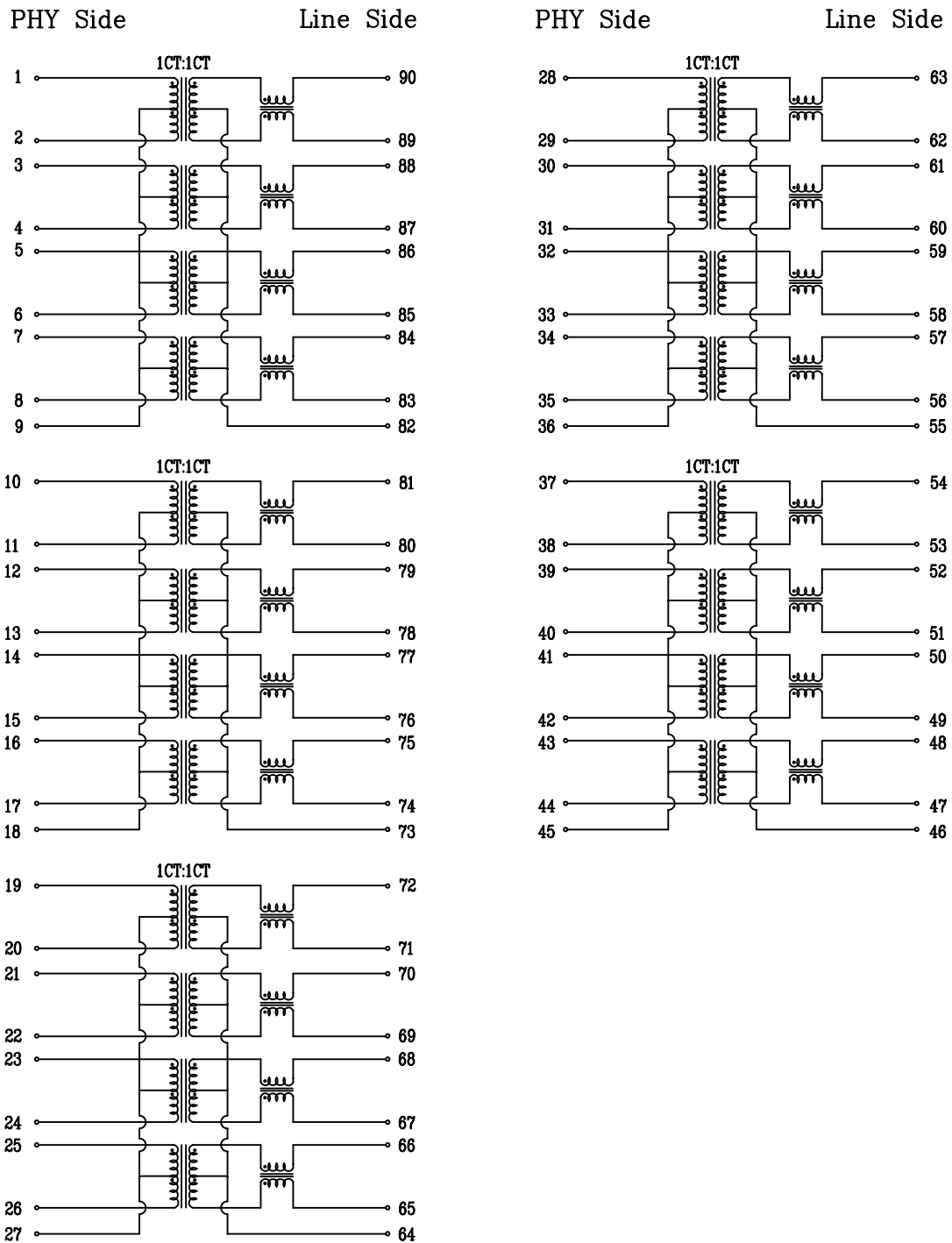
SPECIFICATION FOR APPROVAL

Customer Part No.:
Delta Part No.: LFE9420
Part Name: LAN Filter (1000 Base-T Five Port)

Rev.: E



2. Circuit Schematic:





SPECIFICATION FOR APPROVAL

Customer Part No.:
Delta Part No.: LFE9420
Part Name: LAN Filter (1000 Base-T Five Port)

Rev.: E



3. Electrical Characteristics: (Temp.: 20~30°C, Humidity: 40~75% RH)

3-1. Insertion Loss:

1-100MHz -1.0dB MAX.

3-2. Return Loss:

1-30MHz -18dB MIN. (LOAD 100 OHM)
40MHz -14.4dB MIN. (LOAD 100 OHM)
50MHz -13.1dB MIN. (LOAD 100 OHM)
60-80MHz -12dB MIN. (LOAD 100 OHM)
100MHz -10dB MIN. (LOAD 100 OHM)

3-3. Common Mode Rejection:

1-30MHz -40dB MIN.
30-60MHz -35dB MIN.
60-125MHz -30dB MIN.

3-4. Cross Talk Attenuation:

1-100MHz -30dB MIN.

3-5. Open Circuit Inductance: @100KHz,0.1Vrms

8mA DC Bias 350uH MIN.

3-6. Turns Ratio: @100KHz, 1V

Tx: 1CT:1CT±5%
Rx: 1CT:1CT±5%

3-7. Hi-pot test: @60Hz,1mA

(Pri To Sec): 1500Vrms

- * RoHS Compliant
- * Solder Wire SAC 305 Sn 96.5/Ag 3.0/Cu 0.5
- * Operate Temperature Range: 0~70°C
- * Storage Temperature Range: -40°C~+85°C
- * Unit Weight: 10.89g
- * MSL(Moisture Sensitivity Level): 1