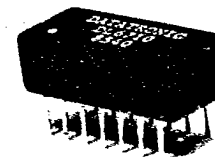


SERIES DL6700 DIGITAL DELAY MODULES • 10 TAPS REDUCED SIZE

- 14 Pin Package • TTL and DTL Compatible • 10 Equally Spaced Taps
- Tight Tolerances

Specifications

- Supply Voltage : 4.75 to 5.25VDC
- Logic 1 Input Current : 50 μ A Max
- Logic 0 Input Current : -4mA Max
- Logic 1 Volt Out : 2.5v Min
- Logic 0 Volt Out : 0.5v Max
- Logic 1 Fan-Out : 20/Tap Max
- Logic 0 Fan-Out : 10/Tap Max
- Power Dissipation : 240mW Total
- Operating Temp Range : 0°C to 70°C
- Temp Coefficient : 100PPM/°C



Input Test Conditions

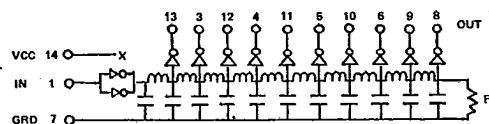
- Input Pulse Voltage : 3.2v
- Input Rise Time : \leq 3NS
- Input Current : 120mA Typ.
- Pulse Width : Min 40% of Total Delay

Electrical Specifications at 25°C (measured with no loads on Taps)

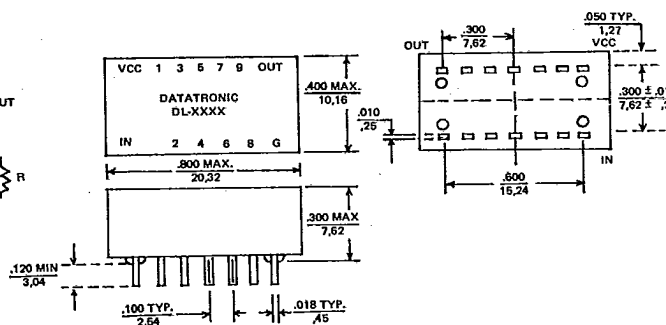
Part Number	Total Delay NSEC \pm 5%	Tap to Tap Delay NSEC ⁽¹⁾	Rise Time NSEC Max ⁽²⁾
DL6706	50	5	3
DL6707	100	10	3
DL6708	150	15	4
DL6709	200	20	4
DL6710	250	25	4
DL6931	300	30	5
DL6932	350	35	5
DL6333	400	40	5
DL6934	450	45	5
DL6711	500	50	5
DL6712	1000	100	6

Note: (1) Measured at 1.5v level leading edge, Tol. \pm 5% or \pm 2NS, whichever is greater.
 (2) Measured from 0.75v to 2.4v.

16 Pin Package is also available.



SCHMATIC



INCHES . XXX \pm .010
 MILLIMETERS . XX \pm .25