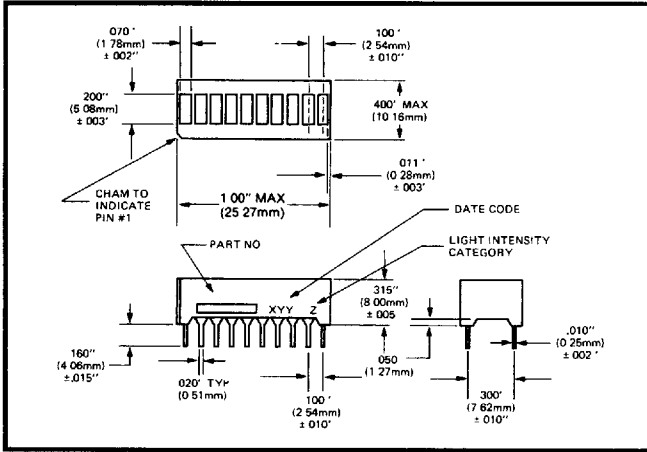


## 10 Segment Bar Graph LED Displays

### DESCRIPTION AND FEATURES



The CMD5X164 Series are 10 Segment Bar Graph Displays with separate anodes and cathodes for each segment. These packages are end stackable, segments are closely spaced and provide a wide view angle. These displays offer lower power consumption and are directly compatible with most IC's.

**4**  
Solid State  
Products

### ELECTRO-OPTICAL CHARACTERISTICS

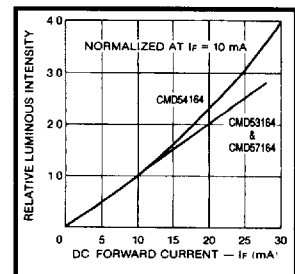
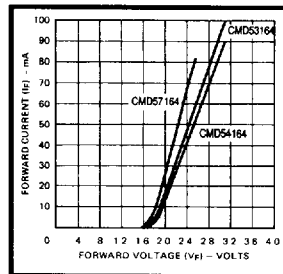
Part Number	Emitted Color	Lens Color	Lens Type	Luminous Intensity			Forward Voltage			Capacitance pF Vr=0, f=1Mhz	Peak Wavelength (nm)	View Angle (Degrees)
				Min. mcd	Typ. mcd	mA	Typ.	Max.	mA			
<b>CMD53164</b>	Yellow	White	Diffused	0.51	1.8	10	2.0	2.2	10	35	585	120
<b>CMD54164</b>	H.E. Green	White	Diffused	0.51	1.8	10	2.5	3.0	10	40	562	120
<b>CMD57164</b>	H.E. Red	Red	Diffused	0.51	1.8	10	2.5	3.0	10	40	630	120

### ABSOLUTE MAXIMUM RATINGS

	Yellow	H.E. Green	H.E. Red	Units
Power Dissipation .....	750	750	750	mW
Storage/Operating Temperature .....	-40 to +85	-40 to +85	-40 to +85	°C
Lead Solder Time at 260° C .....	5	5	5	Seconds
Reverse Voltage (IR = 100µA) .....	6.0	6.0	6.0	V
Average Forward Current (per segment) .....	25	30	30	mA

### TYPICAL CHARACTERISTIC CURVES

Pin Connections		Pin Connections	
Anode	Cathode	Anode	Cathode
Pin No. 1	20	Pin No. 6	15
Pin No. 2	19	Pin No. 7	14
Pin No. 3	18	Pin No. 8	13
Pin No. 4	17	Pin No. 9	12
Pin No. 5	16	Pin No. 10	11



Chicago Miniature Lamp reserves the right to make specification revisions that enhance the design and/or performance of the product.

2082048 0001609 456