

CLLSH1 SERIES
SCHOTTKY RECTIFIER
1.0 AMP, 20 THRU 60 VOLTS



MELF CASE

CentralTM
Semiconductor Corp.

FEATURES

- LOW COST
- HIGH RELIABILITY
- EXTREMELY LOW FORWARD VOLTAGE DROP
- SPECIAL SELECTIONS AVAILABLE
- SUPERIOR LOT TO LOT CONSISTENCY

DESCRIPTION:

The CENTRAL SEMICONDUCTOR 1.0 amp leadless epoxy Schottky rectifier is a high quality, well constructed, highly reliable component designed for use in all types of commercial, industrial, entertainment, computer and automotive applications. Higher voltage devices, special selections, general purpose, fast recovery and ultra fast recovery devices are available upon request.

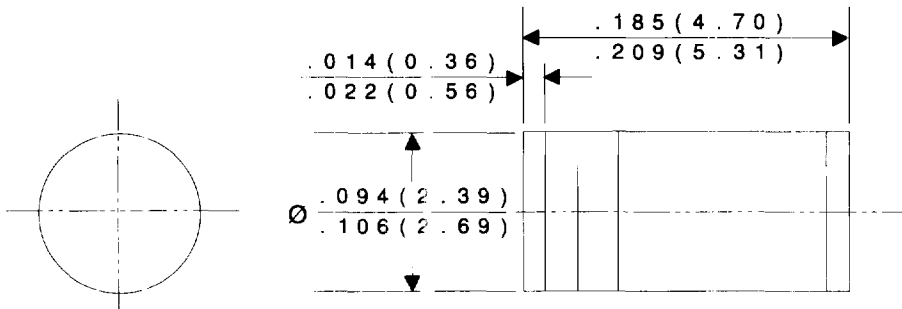
MAXIMUM RATINGS ($T_A=25^{\circ}\text{C}$ unless otherwise noted)

	SYMBOL	CLLSH1-20	CLLSH1-40	CLLSH1-60	UNITS
Peak Repetitive Reverse Voltage	V_{RRM}	20	40	60	V
DC Blocking Voltage	V_R	20	40	60	V
RMS Reverse Voltage	$V_{R(RMS)}$	14	28	42	V
Average Forward Current ($T_L=80^{\circ}\text{C}$)	I_O		1.0		A
Peak Forward Surge Current (8.3ms)	I_{FSM}		30		A
Operating and Storage Junction Temperature	T_J, T_{stg}		-65 to +150		$^{\circ}\text{C}$

ELECTRICAL CHARACTERISTICS ($T_A=25^{\circ}\text{C}$) unless otherwise noted)

SYMBOL	TEST CONDITIONS	MIN	MAX	UNITS
V_F	$I_F=\text{Rated } I_O$ (CLLSH1-20, CLLSH1-40)		0.50	V
V_F	$I_F=\text{Rated } I_O$ (CLLSH1-60)		0.70	V
I_R	$V_R=\text{Rated } V_{RRM}$		500	μA
I_R	$V_R=\text{Rated } V_{RRM}, T_A=100^{\circ}\text{C}$		10	mA

All dimensions in inches (mm).



Marking Codes:

CENTRAL TYPE NO.	BAND 1*	BAND 2
CLLSH1-20	ORANGE	GRAY
CLLSH1-40	ORANGE	ORANGE
CLLSH1-60	ORANGE	GREEN

* Cathode Band

DATA
SHEET