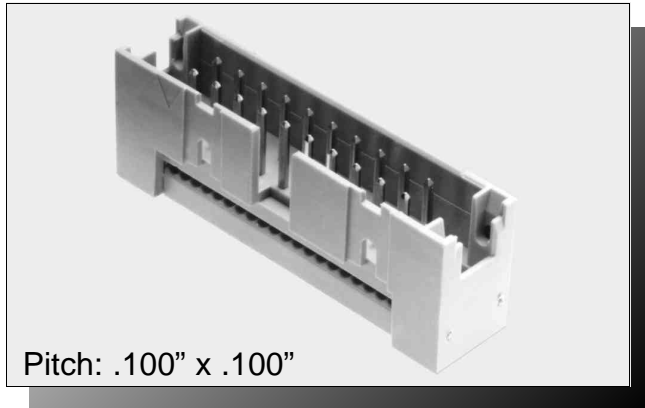




Driven by design.™

TM

circuitassembly.com



Pitch: .100" x .100"

IDT SHROUDED HEADER

SPECIFICATIONS

ENVIRONMENTAL

Temperature Range: -55°C to +105°C

MECHANICAL

Insulator Material: Glass-filled polyester, gray, UL94V-0

Latch Material: Polycarbonate, gray, UL94V-0

Contact Material: Phosphor Bronze

Contact Plating: Mating Area: 15µ IN gold

Terminates To: .050" cable, 28 AWG

ELECTRICAL

Current Rating: 1 AMP

CA- POSITION IDH- EARS C

POSITION	EARS
10*	40
20	50
26	60
34	

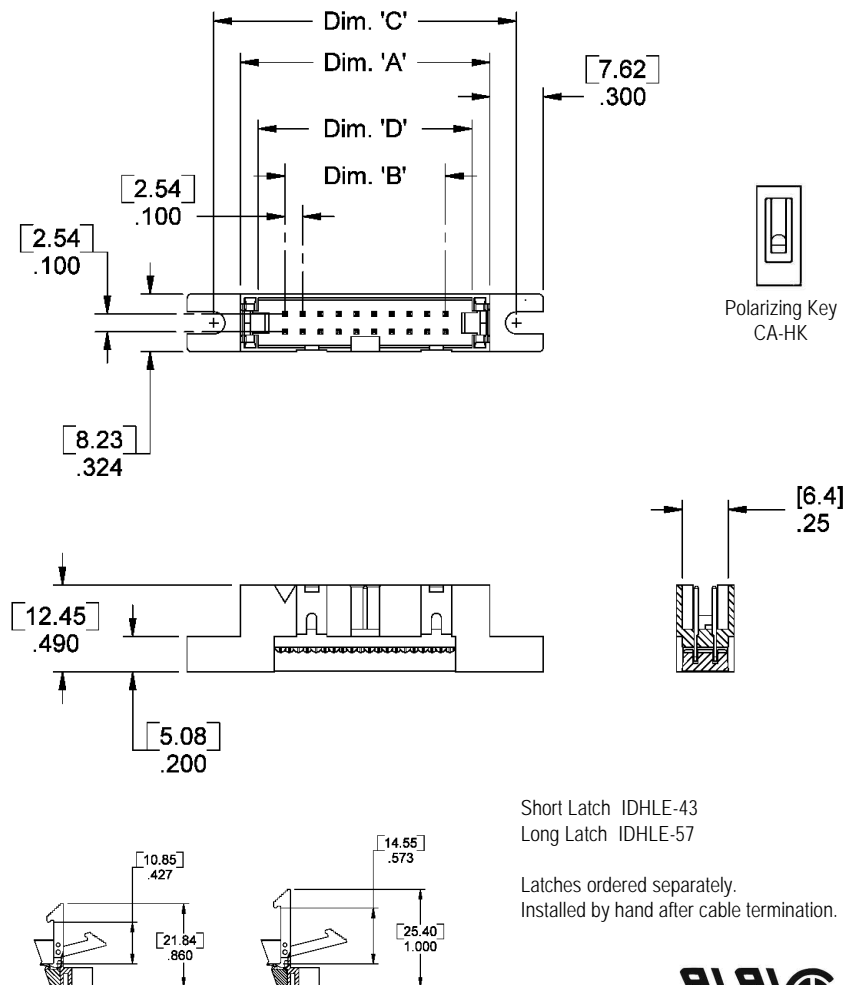
Polarization Notes:

20-60 positions have center polarization slot and 2 HK locations

*Standard 10 position has NO polarization slot, but does have 1 HK location

10 position - SPT available with polarization, without HK location

DIMENSIONS				
Position	A	B	C	D
10*	.900 [22.96]	.400 [10.16]	1.200 [30.48]	.700 [17.78]
20	1.40 [35.56]	.900 [22.86]	1.700 [43.18]	1.200 [30.48]
26	1.70 [43.18]	1.200 [30.48]	2.000 [50.80]	1.500 [38.10]
34	2.10 [53.34]	1.600 [40.64]	2.400 [60.96]	1.900 [48.26]
40	2.40 [60.96]	1.900 [48.26]	2.700 [68.58]	2.200 [55.88]
50	2.90 [73.66]	2.400 [60.96]	3.200 [81.28]	2.700 [68.58]
60	3.40 [86.36]	2.900 [73.66]	3.700 [93.98]	3.200 [81.28]



Short Latch IDHLE-43

Long Latch IDHLE-57

Latches ordered separately.

Installed by hand after cable termination.



Drawing Number CA-620228

For more information please contact our customer service department or visit our website at circuitassembly.com

Circuit Assembly Corp 18 Thomas Street, Irvine, CA 92618-2777 Phone 949.855.7887 Fax 949.855.4298