

LED MOUNTS/SPACERS

Molded Self-Retaining LED Mounts

- Optional Locator Pin
- Molded of Black Nylon per ASTM D-4066
- Self-Retaining Design Ideal for Automatic Insertion
- Housing Made from 94V-0 Rated Nylon



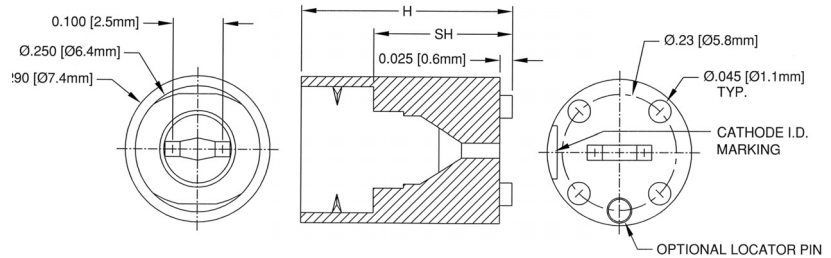
Bivar's SLM Series of Self-Retaining LED mounts are ideal for environments where high shock and vibration are a concern, such as: portable equipment, telecommunication equipment, and automotive applications.

Material Specifications:

UL Rated 94V-0 Black 6/6 Nylon per ASTM D4066 PA111

Oxygen Index: +28%

UL File #E84658



SLM Series

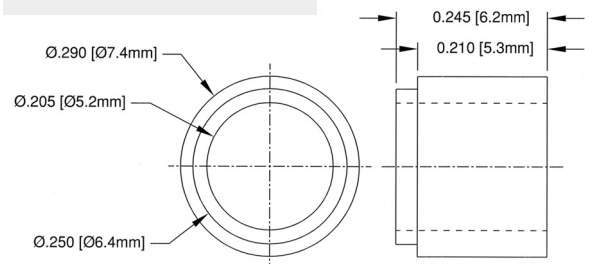
Material: Nylon 6/6 94V-0
Color: Black

Part No.	SH (ref.)	H	Price Code
SLM-140	.140 (3.6)	.285 (7.1)	B
SLM-150	.150 (3.8)	.295 (7.2)	B
SLM-160	.160 (4.1)	.305 (7.7)	B
SLM-170	.170 (4.3)	.315 (8.0)	B
SLM-180	.180 (4.6)	.325 (8.3)	B
SLM-190	.190 (4.8)	.335 (8.5)	B
SLM-200	.200 (5.1)	.345 (8.8)	B
SLM-210	.210 (5.3)	.355 (9.0)	B
SLM-220	.220 (5.6)	.365 (9.3)	B
SLM-230	.230 (5.8)	.375 (9.5)	B
SLM-240	.240 (6.1)	.385 (9.8)	F
SLM-250	.250 (6.4)	.395 (10.0)	F
SLM-260	.260 (6.6)	.405 (10.3)	F
SLM-270	.270 (6.9)	.415 (10.5)	F
SLM-280	.280 (7.1)	.425 (10.8)	F
SLM-290	.290 (7.4)	.435 (11.0)	F
SLM-300	.300 (7.6)	.445 (11.3)	F
SLM-310	.310 (7.9)	.455 (11.6)	F
SLM-320	.320 (8.1)	.465 (11.8)	F
SLM-330	.330 (8.4)	.475 (12.1)	F
SLM-340	.340 (8.6)	.485 (12.3)	F
SLM-350	.350 (8.9)	.495 (12.6)	F
SLM-360	.360 (9.1)	.505 (12.8)	F
SLM-370	.370 (9.4)	.515 (13.1)	G
SLM-380	.380 (9.7)	.525 (13.3)	G
SLM-390	.390 (9.9)	.535 (13.6)	G
SLM-400	.400 (10.2)	.545 (13.8)	G

Part No.	SH (ref.)	H	Price Code
SLM-410	.410 (10.4)	.555 (14.1)	G
SLM-420	.420 (10.7)	.565 (14.3)	G
SLM-430	.430 (10.9)	.575 (14.6)	G
SLM-440	.440 (11.2)	.585 (14.9)	G
SLM-450	.450 (11.4)	.595 (15.1)	G
SLM-470	.470 (11.9)	.615 (15.6)	G
SLM-490	.490 (12.4)	.635 (16.1)	H
SLM-510	.510 (13.0)	.655 (16.6)	H
SLM-530	.530 (13.5)	.675 (17.1)	H
SLM-550	.550 (13.8)	.695 (17.7)	H
SLM-570	.570 (14.5)	.715 (18.2)	H
SLM-590	.590 (15.0)	.735 (18.6)	H
SLM-610	.610 (15.5)	.755 (19.2)	I
SLM-630	.630 (16.0)	.775 (19.7)	I
SLM-650	.650 (16.5)	.795 (20.2)	I
SLM-670	.670 (17.0)	.815 (20.7)	I
SLM-690	.690 (17.5)	.835 (21.2)	J
SLM-710	.710 (18.0)	.855 (21.7)	J
SLM-730	.730 (18.5)	.875 (22.2)	J
SLM-750	.750 (19.1)	.895 (22.7)	J
SLM-770	.770 (19.6)	.915 (23.2)	J
SLM-790	.790 (20.1)	.935 (23.7)	J
SLM-810	.810 (20.6)	.955 (24.3)	J
SLM-830	.830 (21.1)	.975 (24.8)	J
SLM-850	.850 (21.6)	.995 (25.3)	J
SLM-870	.870 (22.1)	1.015 (25.8)	J
SLM-890	.890 (22.6)	1.035 (26.3)	J

Light Shield

Part No.	LED	Price Code
LS-1	T-13/4 (5mm)	A



Note: Consult factory for details regarding option locator pin. To order the optional LS-1 (Light Shield), please refer to the SLM Series Chart.