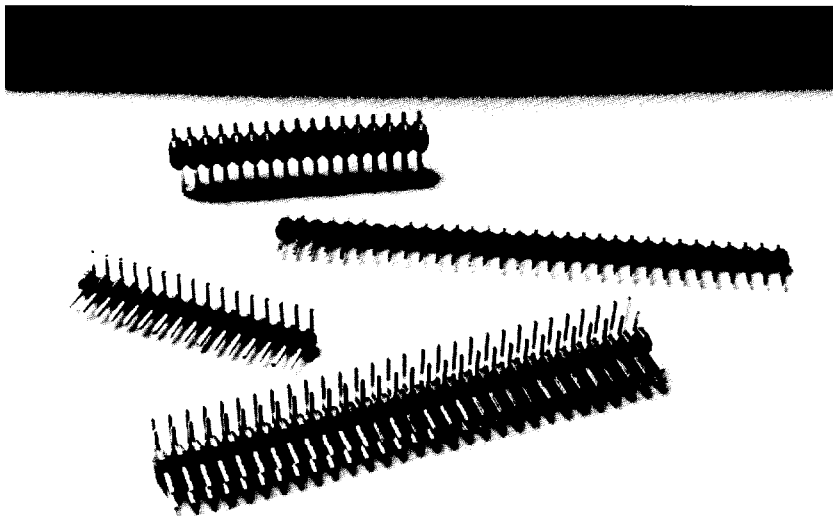


UNPROTECTED HEADERS

Standard Pitch  
Sockets & Headers



**description**

Amphenol unprotected male headers are soldered to PC boards, logic panels, or backplanes. These headers mate with a wide variety of female sockets: series 812 or similar connectors. They provide a low-cost interconnection with quick disconnect /reconnect capability. Both single and double row configurations are easily breakable to desired number of pins. Stand-offs on the bottom of the insulators facilitate PC board cleaning after installation.

Single or double row, straight and right-angle headers feature .025" square posts, with .100" tail length for soldering onto .062" PC boards.

**compatibility**

Amphenol 800/801 series headers mate with Amphenol 812 series sockets.

**cutting tool**

See page 59

**ordering information**

Rows X Contacts		15 μ" Gold/Tin Duplex	30 μ" Gold/Tin Duplex	Gold Flash/Tin Duplex
1 X 36	straight	842-800-272-005	842-800-272-010	842-800-272-018
	right-angle	842-800-840-005	842-800-840-010	842-800-840-018
2 X 36	straight	842-800-560-005	842-800-560-010	842-800-560-018
	right-angle	842-801-056-005	842-801-056-010	842-801-056-018

Single Row Headers: .100" (2.54 mm) center spacing  
 Double Row Headers: .100" (2.54 mm) X .100" (2.54 mm) grid spacing  
**Consult local value-added distributor for cut versions less than 36.**

**benefits**

- Mates with IDC socket connectors
- Single or double row, straight or right angle
- Breakable to desired number of pins
- Square post
- Duplex plated contacts for lower per line cost
- Designed for easy board cleaning after installation
- UL and CSA recognized

**characteristics**

**Physical**

Contact spacing:  
 Single row: .100" (2.54mm) center spacing;  
 Double row: .100" x .100" (2.54mm x 2.54mm) grid  
 Number of contacts: 36 contacts per row, both single and double row  
 Contact material: Phosphor bronze  
 Contact plating: Gold over nickel on mating area, solder-plated tails.  
 Insulation material: Glass reinforced thermoplastic. UL flammability rating 94 V-O

**Electrical**

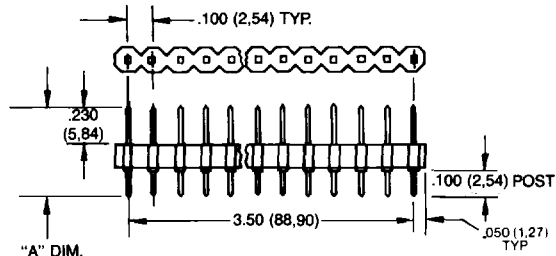
Current rating: 1 amp  
 Insulation resistance: 5000 megohms (min.)  
 Dielectric withstanding voltage:  
 500 VAC for 60 seconds  
 Operating temperature range:  
 -55°C to +130°C  
 (-67°F to +266°F)  
 UL Recognized to 130°C

UNPROTECTED HEADERS

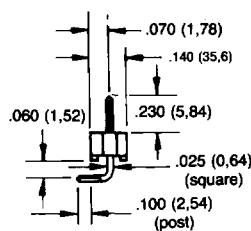
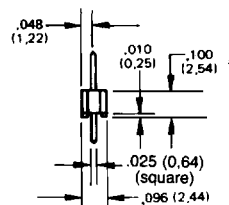
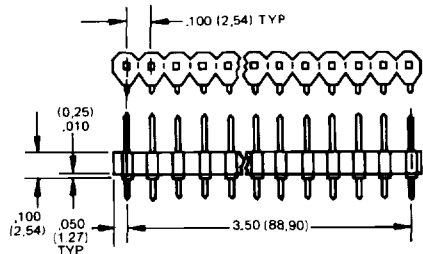
dimensions

single row headers .100" (2,54 mm) center spacing

Straight



Right Angle



Dimensions are shown in inches and (mm).

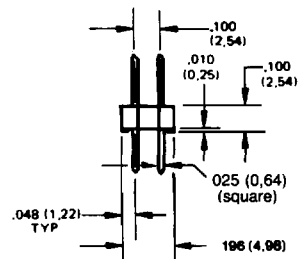
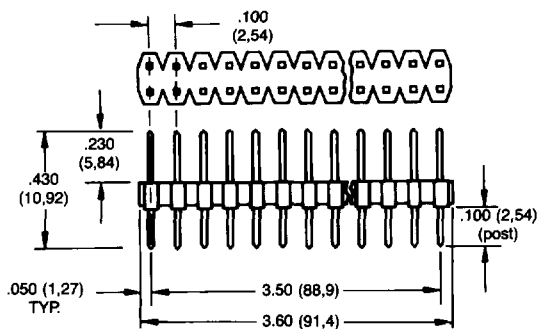
Post lengths mate with PC Board.

Dimension of .070" (1,78) on right angle headers is a clearance dimension for mating socket connector.

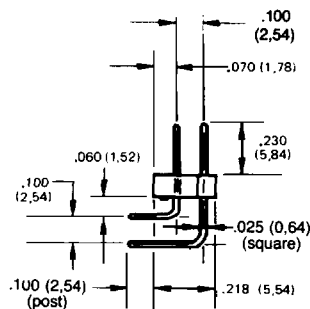
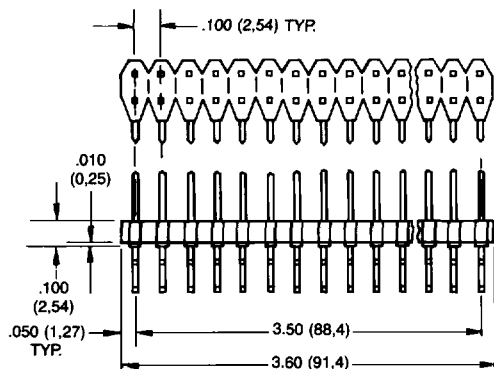
Standard Pitch Sockets & Headers

double row headers .100" (2,54 mm) x .100" (2,54 mm) grid spacing

Straight



Right Angle



.230" dimension on all header styles is pin length dimension which mates to socket connector.

Dimensions and characteristics subject to change without notice.