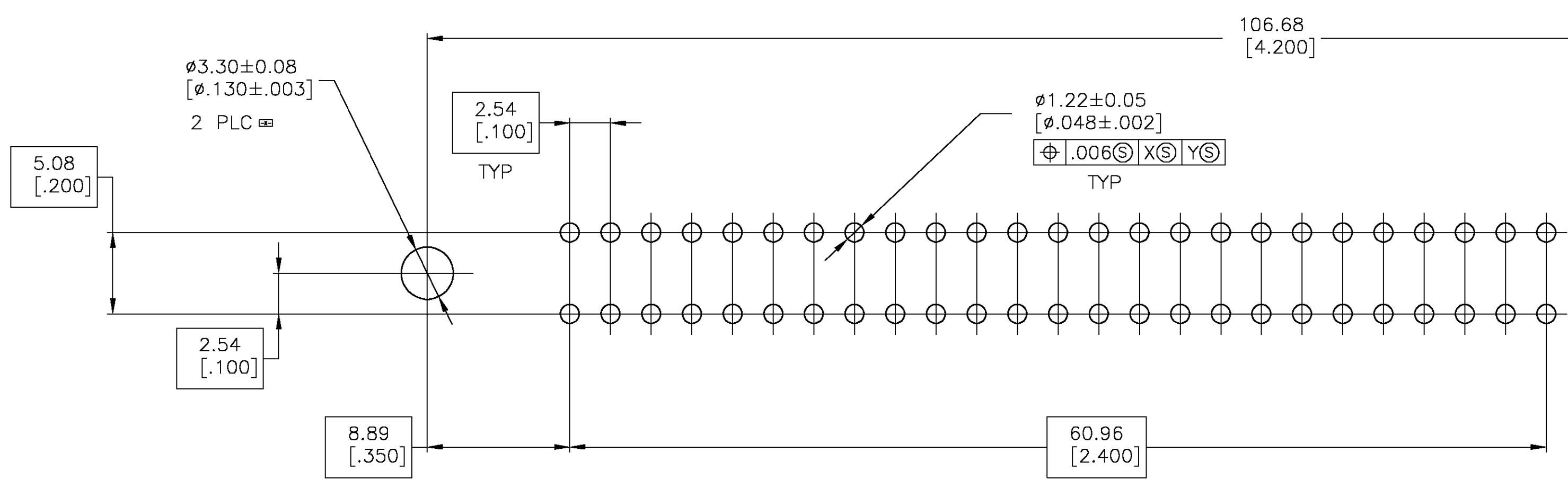


- 1 HOUSING: POLYESTER, BLACK.
CAM ROD: STAINLESS STEEL.
INSERTS: POLYPHENYLENE SULFIDE, NATURAL.
CONTACTS: PHOSPHOR BRONZE.
- 2 CONTACTS: 1.27µm[.000050] MIN THICK NICKEL PLATE ALL OVER.
0.76µm[.000030] MIN THICK GOLD PLATE ON CONTACT AREA
AND 2.54µm[.000100] MIN THICK TIN OR TIN-LEAD ON SOLDER TAIL.
- 3 OPEN CONNECTOR BY ROTATING CAM ROD CLOCKWISE
WITH .250 INCH DRIVER.
- 4 ACCEPTS 1.37-1.78[.054-.070] PC BOARD.
- 5 DUAL POSITIONS 26 THRU 36 NOT LOADED.
- 6 CONTACTS: 1.27µm[.000050] MIN THICK NICKEL PLATE ALL OVER.
0.76µm[.000030] MIN THICK GOLD PLATE ON CONTACT AREA
AND 2.54µm[.000100] MIN THICK TIN OR MATTE TIN ON SOLDER TAIL.



36 DUAL	5-678019-1
36 DUAL	678019-1
NO OF POSN	PART NUMBER

THIS DRAWING IS A CONTROLLED DOCUMENT.

DIMENSIONS: mm [INCHES]	TOLERANCES UNLESS OTHERWISE SPECIFIED:	DRN: C. REIFSNYDER 04FEB98	CHK: H. ROSE 05FEB98	APVD: H. ROSE 05FEB98	NAME: H. ROSE	PRODUCT SPEC: ---	APPLICATION SPEC: ---	SIZE: A1	CAGE CODE: 00779	DRAWING NO: 678019	RESTRICTED TO: ---
0 PLC ± -	1 PLC ± -	2 PLC ± -	3 PLC ± -	4 PLC ± -	ANGLES ± -	FINISH: ---	WEIGHT: ---	CUSTOMER DRAWING	SCALE: 4:1	SHEET: 1 OF 1	REV: A

tyco Electronics Tyco Electronics Corporation Harrisburg, Pa 17105-3608

CONNECTOR ASSY, .100 C/L, SOLDER POST, OPEN ENDED, 25 DUAL POSN, SPECIAL, ROTARY ZIF