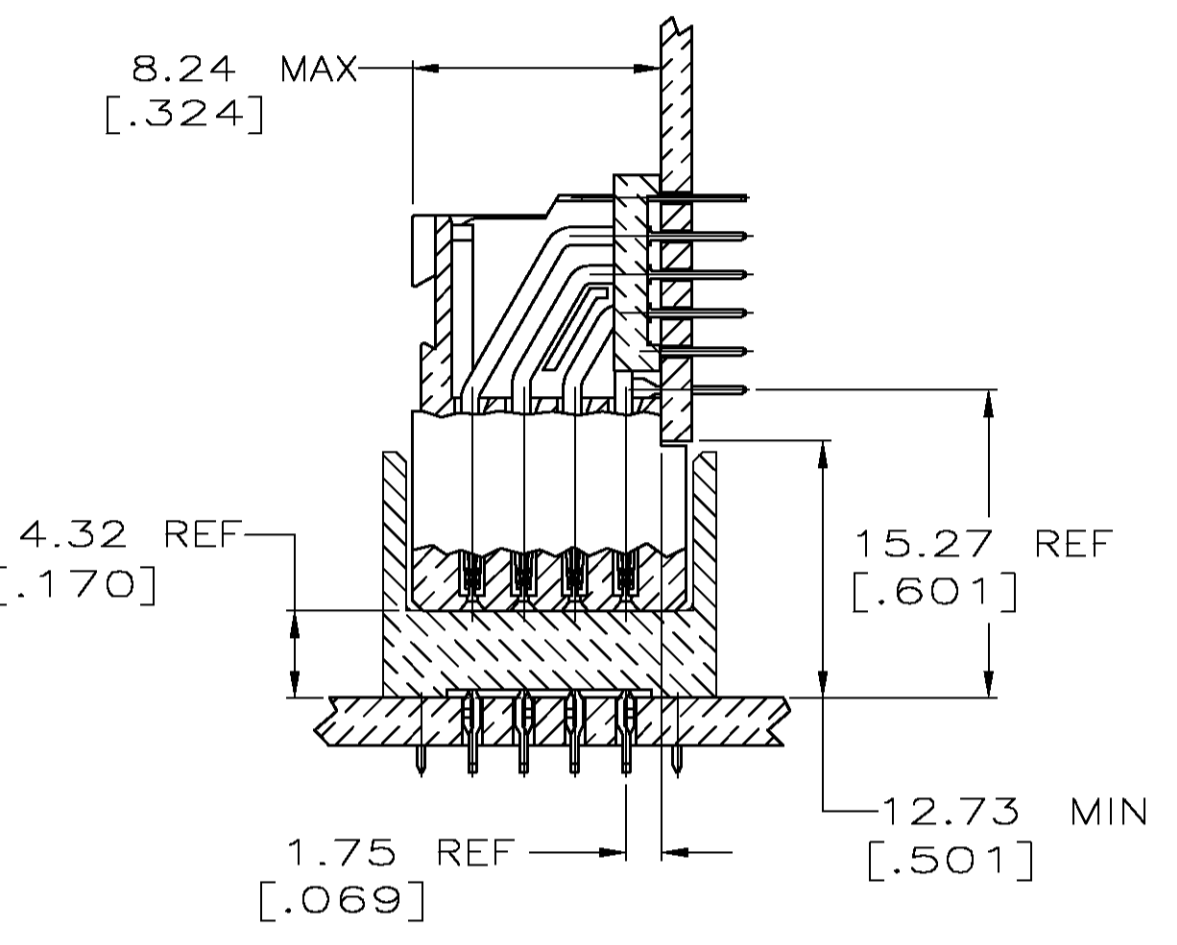
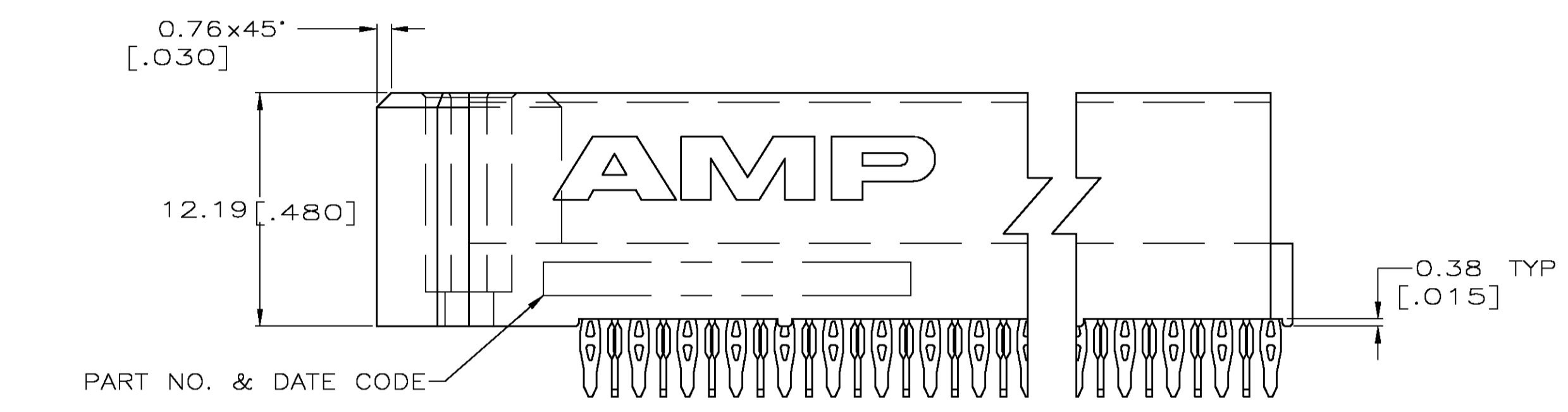
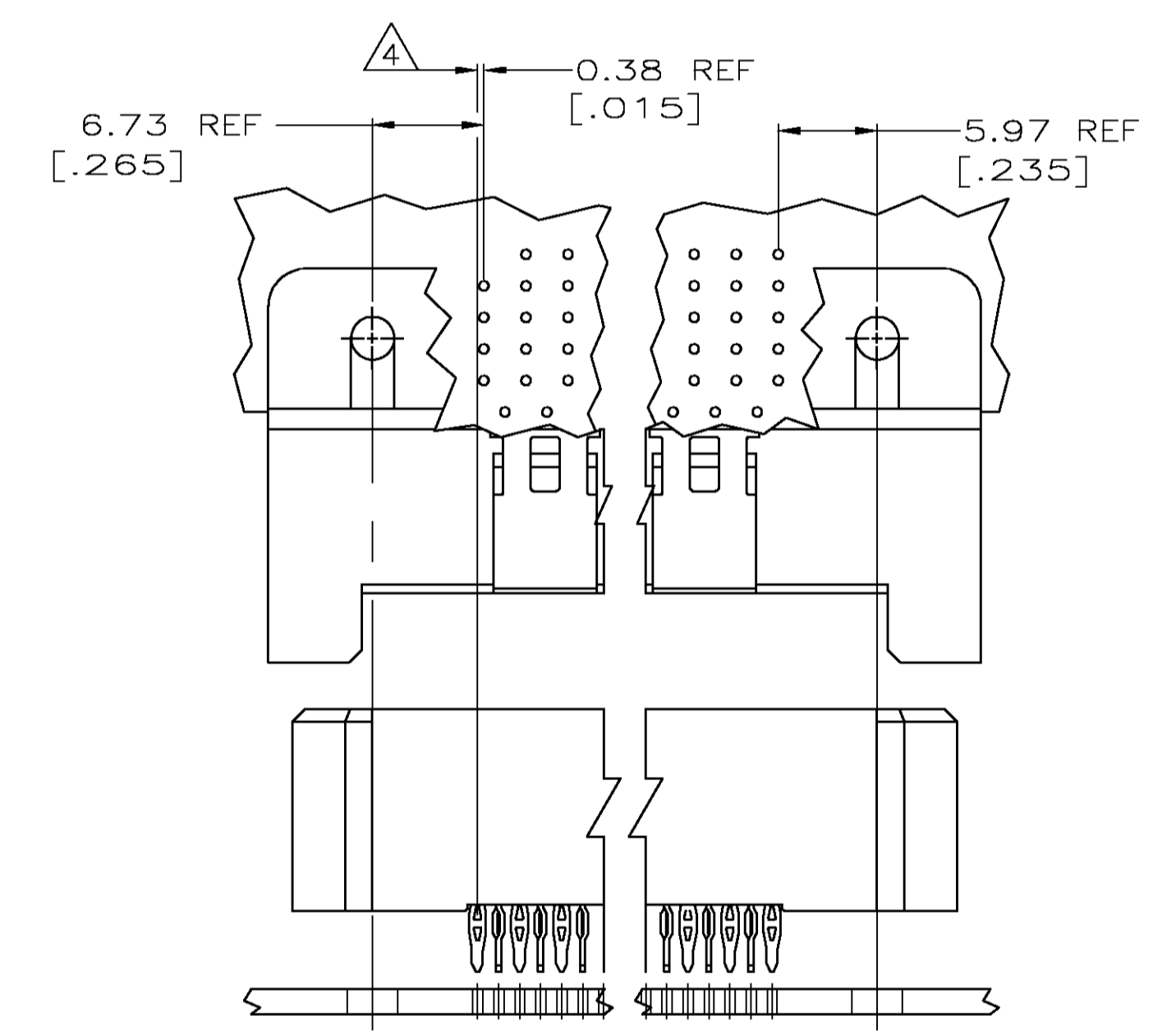


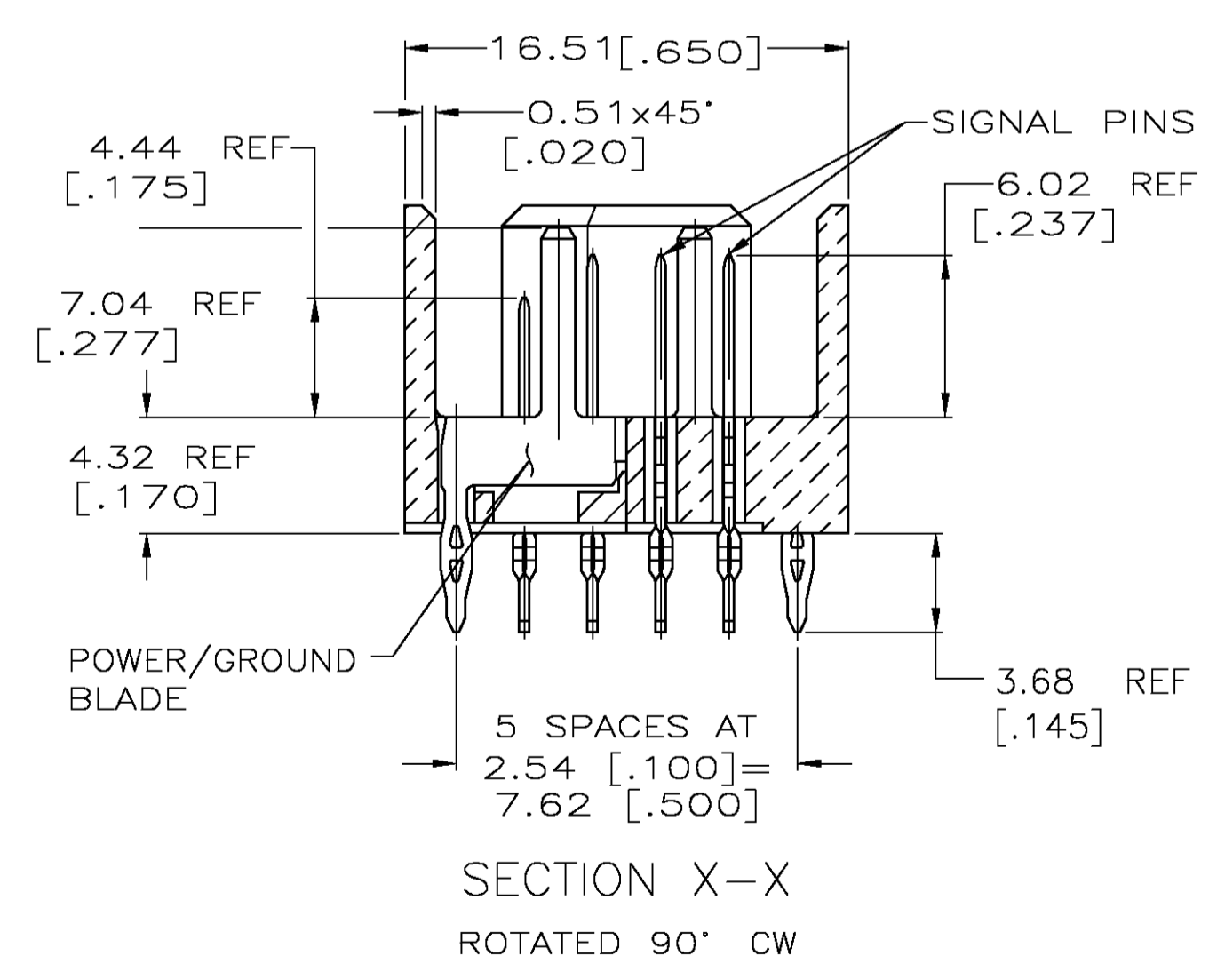
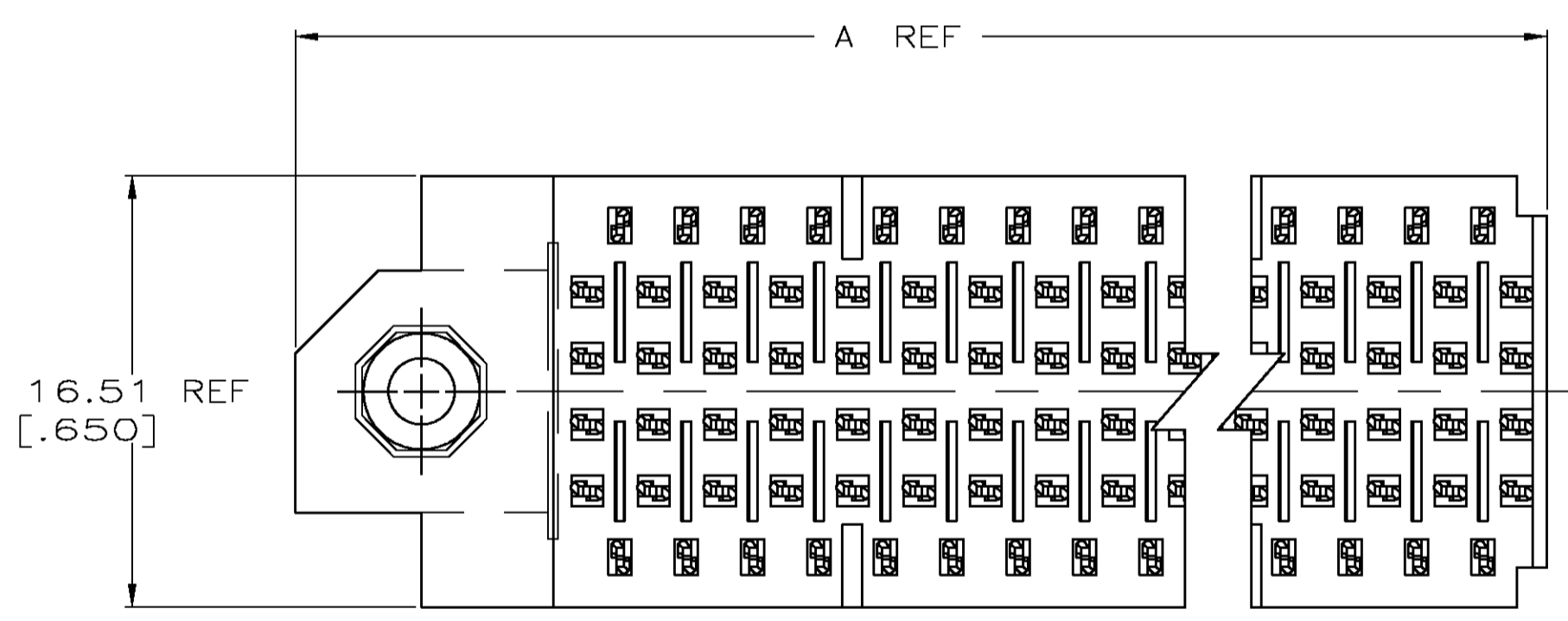
- △ HOUSING MATERIAL: LIQUID CRYSTAL POLYMER PER ASTM D5138-LCP000G30A32250, COLOR: BLACK.
- △ CONTACT MATERIAL: PHOSPHOR BRONZE, PER CDA CS5110.
- △ CONTACT FINISH:
 ON MATING SURFACES-
 GOLD FLASH PER MIL-G-45204, TYPE I, CLASS: N/A, GRADE: C, OVER 0.00076[.000030] MIN PALLADIUM-NICKEL PER AMP INCORPORATED SPECIFICATION, OVER 0.00127 [.000050] MIN NICKEL PER FEDERAL SPECIFICATION QQ-N-290, CLASS: 2, GRADE: N/A.
 ON LEADS-
 0.00381 [.000150] MIN TIN-LEAD PER MIL-P-81728, OVER 0.00127 [.000050] MIN NICKEL PER FEDERAL SPECIFICATION QQ-N-290, CLASS: 2, GRADE: N/A.
- △ RECEPTACLE ASSEMBLY SOLDER LEADS ARE OFFSET .015 TOWARD THE ASSEMBLY RIGHT OF THE CAVITY CENTERLINE. THE PIN ASSEMBLY SOLDER LEADS ARE IN LINE WITH THE CAVITY CENTERLINE.
- 5. DIMENSIONS IN BRACKETS ARE IN INCHES.



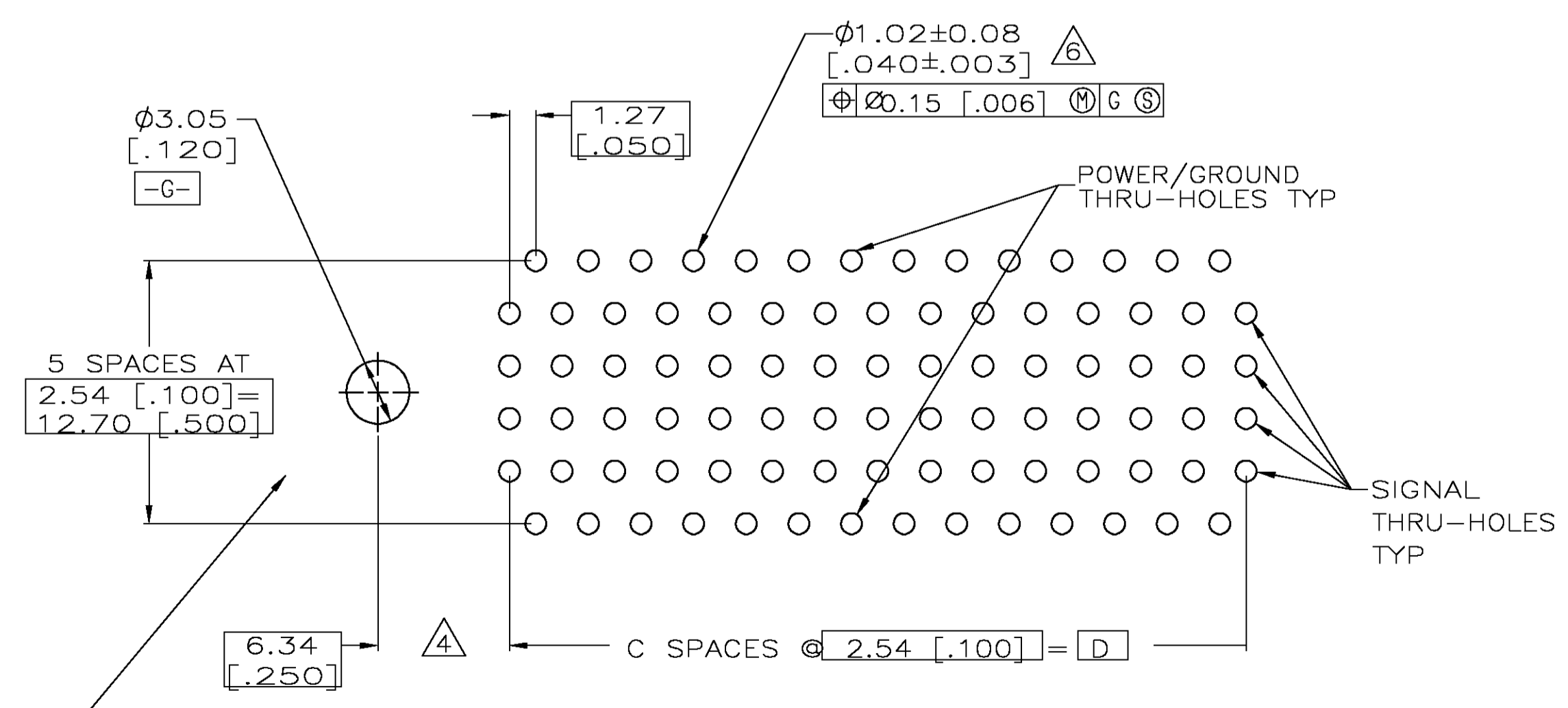
REFERENCE MATED CROSS SECTION SCALE 2:1



REFERENCE MATED CONNECTOR THRU HOLE OFFSET SCALE 2:1



SECTION X-X ROTATED 90° CW



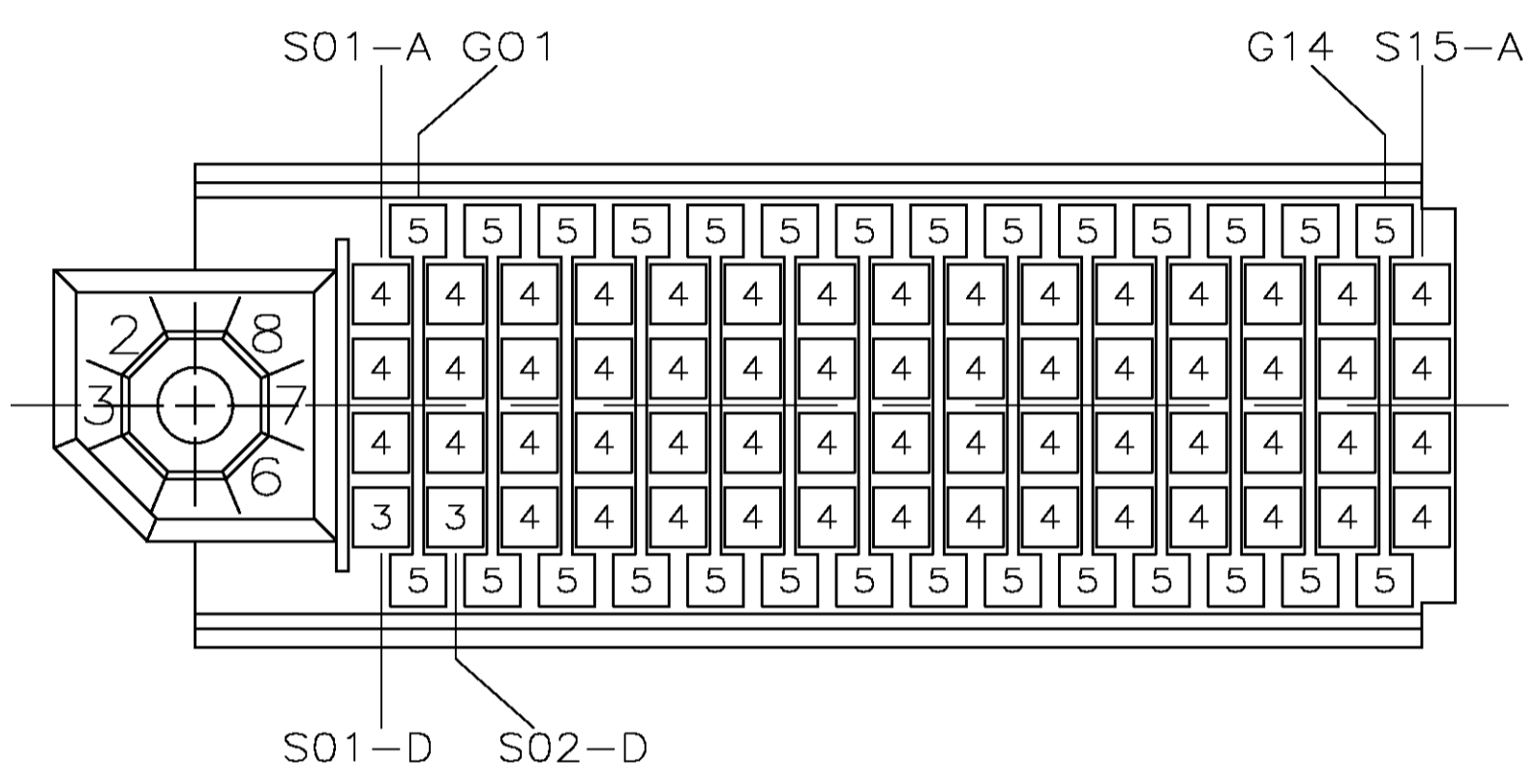
RECOMMENDED CURCUIT PATTERN PER ANSI/IPC-D-300 TYPE II, CLASS C (COMPONENT SIDE)

48.28 [1.900]	19	-	60.55 [2.384]	80	646641-2
35.56 [1.400]	14	-	47.85 [1.884]	60	646641-1
D	C	-	A	NO OF SIGNAL POS	PART NO

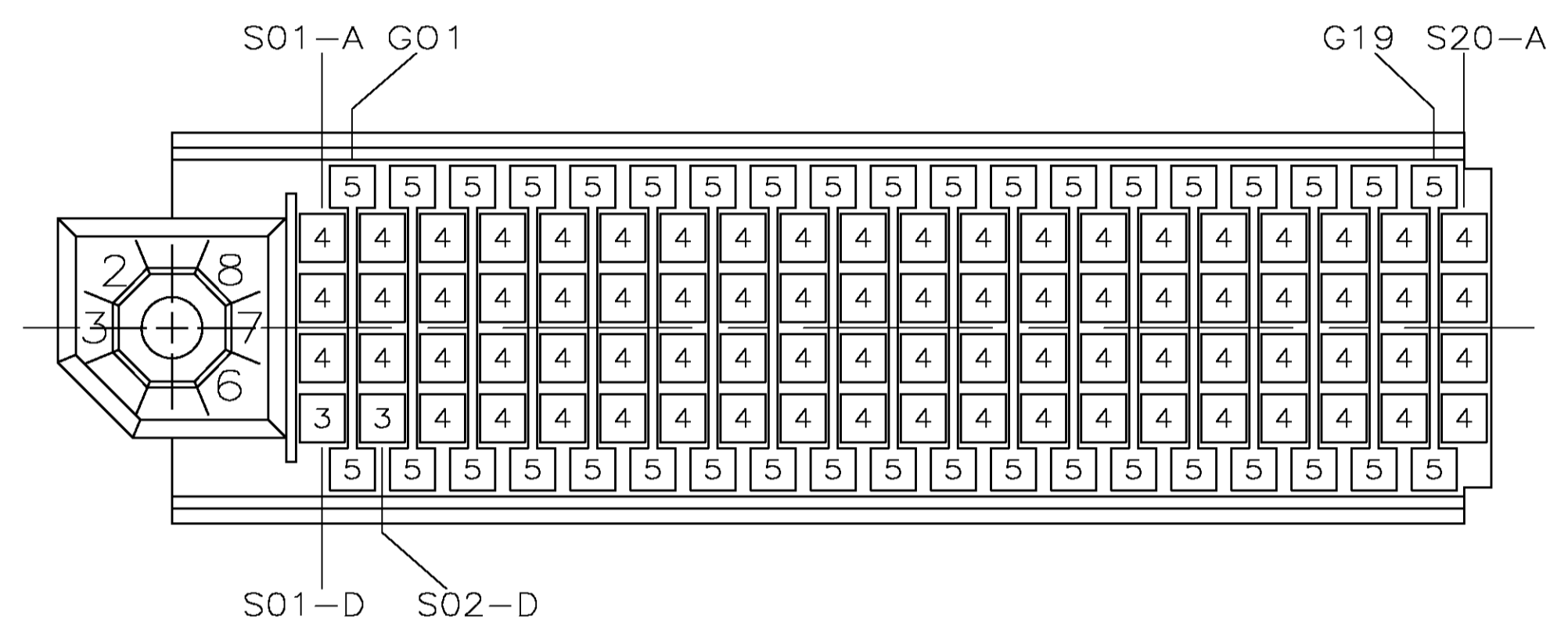
THIS DRAWING IS A CONTROLLED DOCUMENT.

DIMENSIONS: MM	TOLERANCES UNLESS OTHERWISE SPECIFIED:	APPROVED: G.P. GROGAN	DATE: 02/02/95	DESIGNED: J. LOCONDRO	DATE: 02/02/95
0 PLC ± -	1 PLC ± -	2 PLC ± 0.51 [.02]	3 PLC ± 0.25 [.010]	4 PLC ± -	ANGLES ± -
MATERIAL	FINISH	WEIGHT	SIZE	CAGE CODE	DRAWING NO
			A1	00779	646641
CUSTOMER DRAWING			SCALE	SHEET	REV
			4:1	1 OF 2	E

tyco Tyco Electronics Corporation
 Electronics Harrisburg, PA 17105-3608
 NAME: Z-PACK Stripline 100, PIN HEADER SUB-ASSEMBLY LEFT END MODULE
 PRODUCT SPEC: 108-1244
 APPLICATION SPEC: 3.68 [.145] ACTION PIN LEAD LENGTH
 SIZE: 104-1065



646641-1 SUB-ASSEMBLY
 (60 POSITIONS)



646641-2 SUB-ASSEMBLY
 (80 POSITIONS)

POWER/GROUND CONTACT
 LOAD PATTERN
 (MATING FACE)

ITEM DESCRIPTION	LEAD LENGTH REF	POST LENGTH REF	ITEM NUMBER
POWER/GROUND	.145	.277	5
SIGNAL	.145	.237	4
SIGNAL	.145	.175	3

THIS DRAWING IS A CONTROLLED DOCUMENT.		DIN J.LOCONDRO 02/02/95 CHK G.P.GROGAN 02/02/95 APD D.B.SINISI 02/06/95	tyco Electronics Tyco Electronics Corporation Harrisburg, PA 17105-3608
DIMENSIONS: MM 0 PLD ± - 1 PLD ± - 2 PLD ± 0.51 [.02] 3 PLD ± 0.25 [.010] 4 PLD ± - ANGLES ± -	TOLERANCES UNLESS OTHERWISE SPECIFIED: 0 PLD ± - 1 PLD ± - 2 PLD ± 0.51 [.02] 3 PLD ± 0.25 [.010] 4 PLD ± - ANGLES ± -	NAME Z-PACK Stripline 100, PIN HEADER SUB-ASSEMBLY PRODUCT SPEC 108-1244 APPLICATION SPEC 104-1065 WEIGHT -	SIZE A1 CAGE CODE 00779 DRAWING NO. 646641 RESTRICTED TO -
MATERIAL SEE SHEET 1	FINISH SEE SHEET 1	CUSTOMER DRAWING	
		SCALE 4:1	SHEET 2 OF 2 REV E