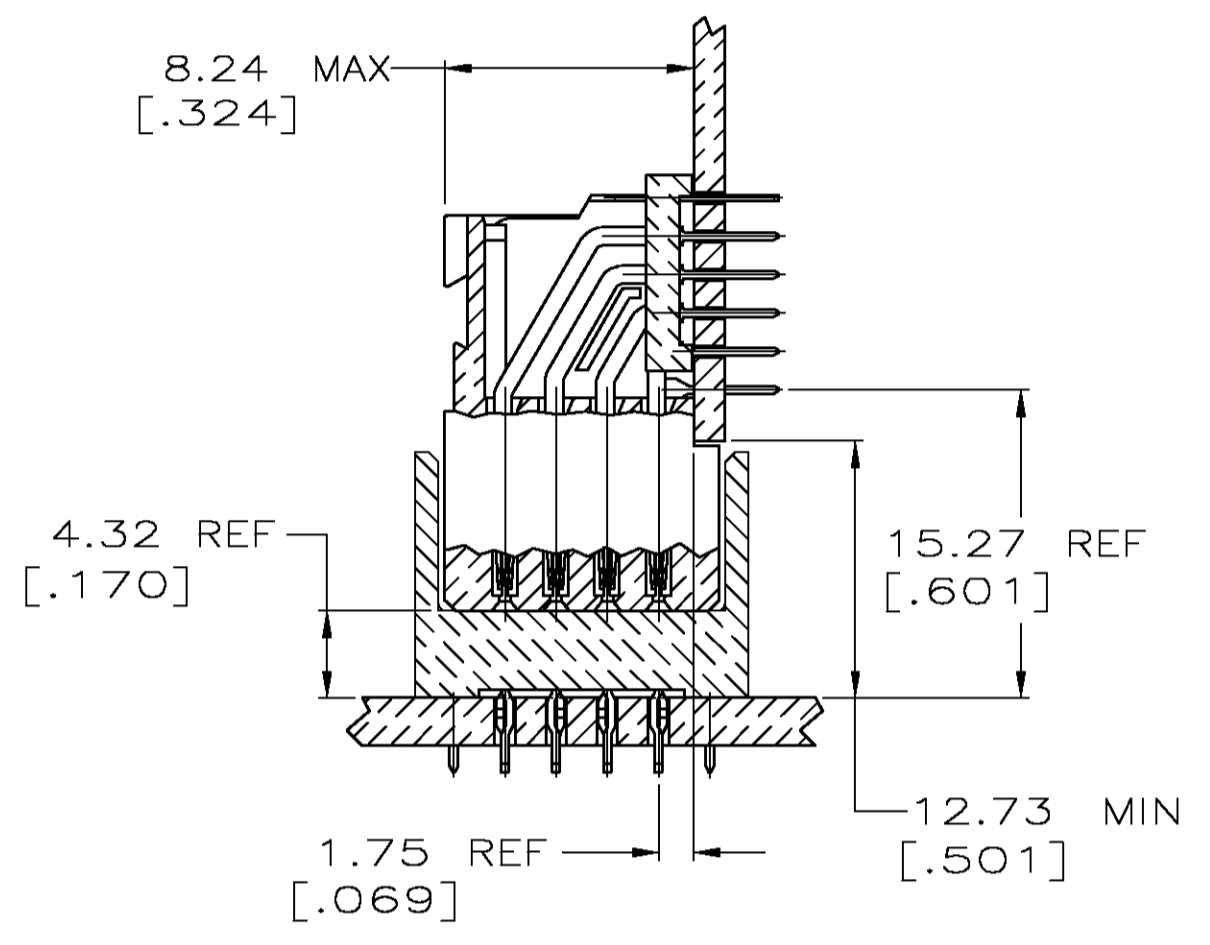
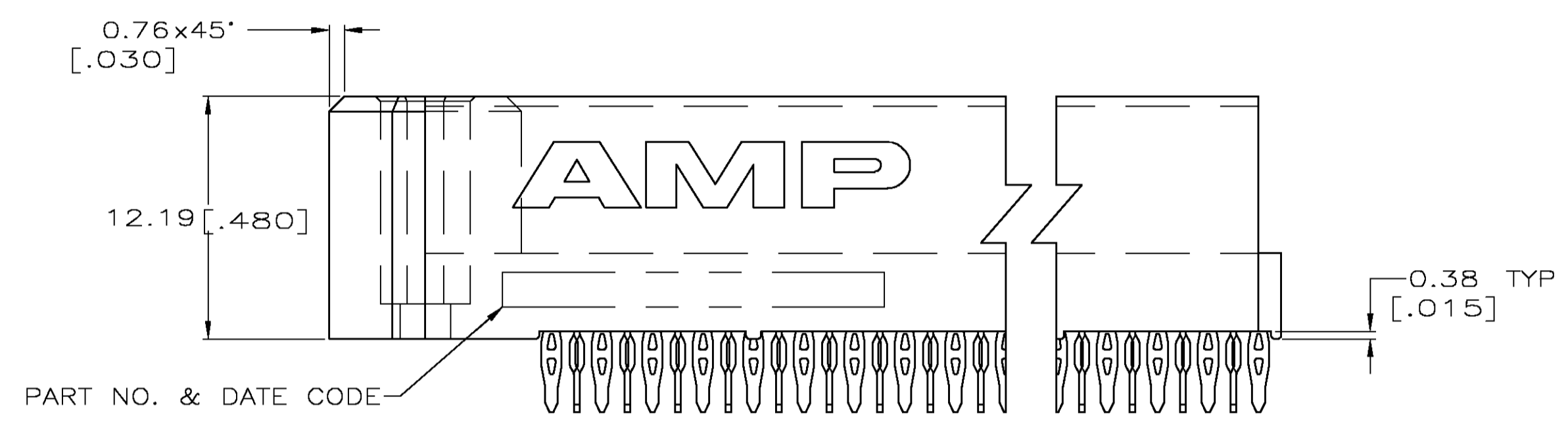
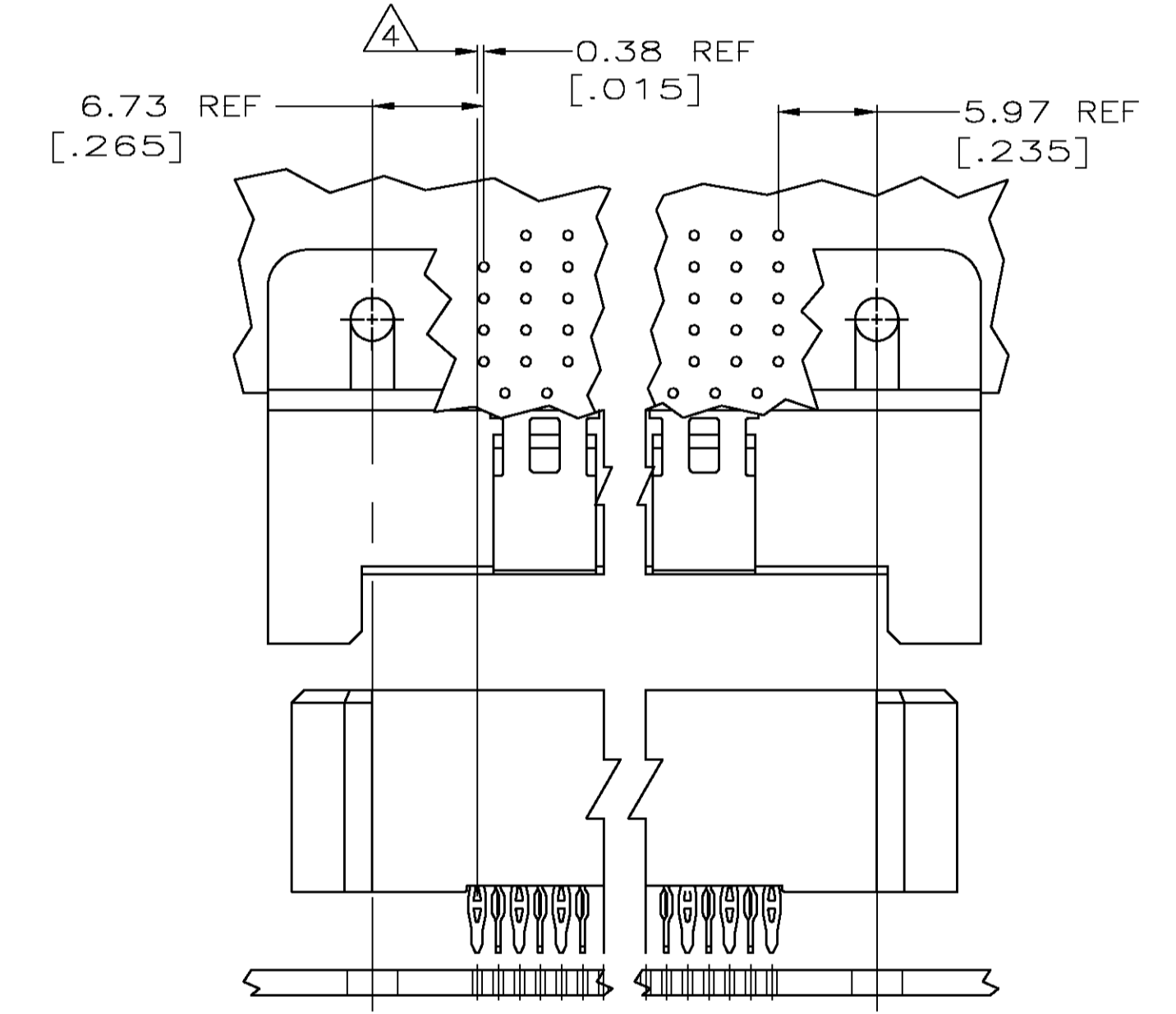


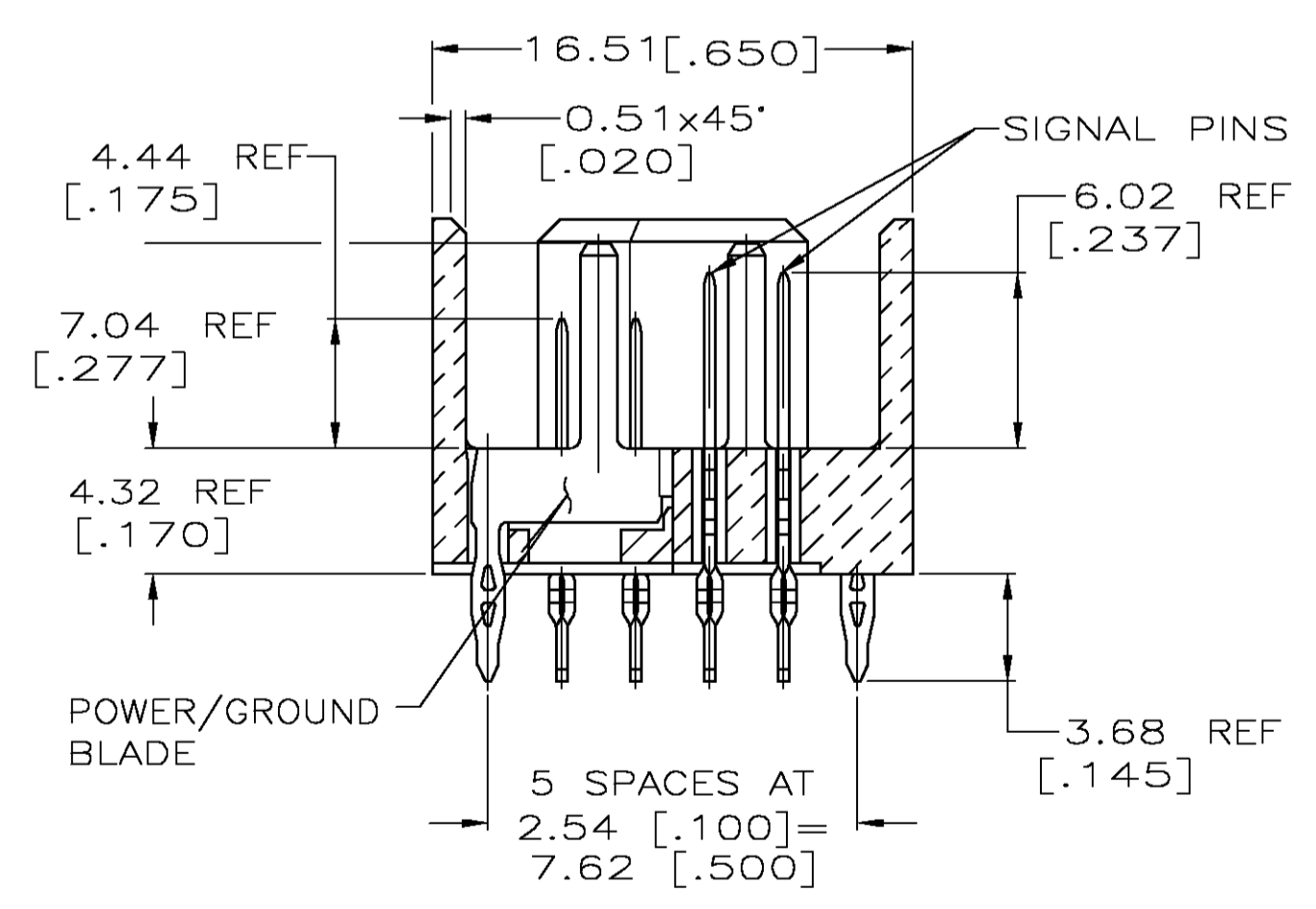
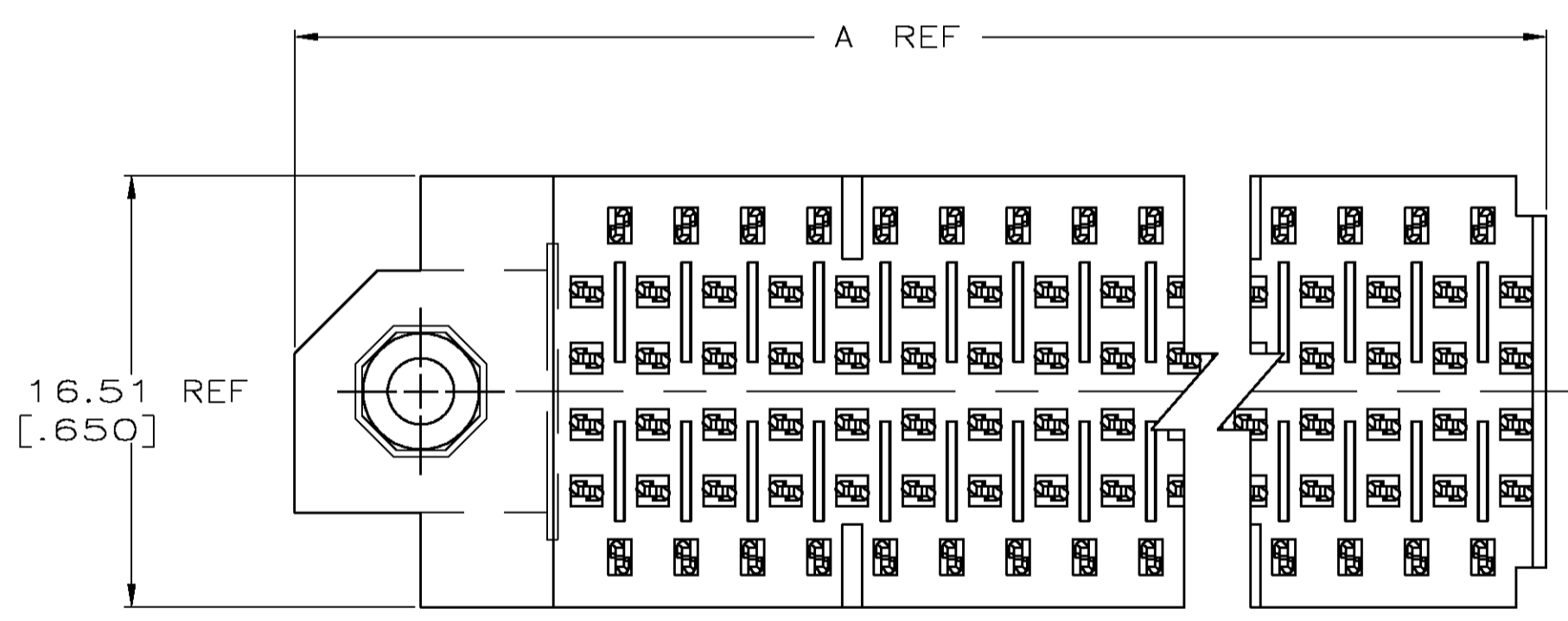
- △ HOUSING MATERIAL: LIQUID CRYSTAL POLYMER PER ASTM D5138-LCP000G30A32250, COLOR: BLACK.
- △ CONTACT MATERIAL: PHOSPHOR BRONZE, PER CDA CS5110.
- △ CONTACT FINISH:
 ON MATING SURFACES-
 GOLD FLASH PER MIL-G-45204, TYPE I, CLASS: N/A, GRADE: C, OVER 0.00076[.000030] MIN PALLADIUM-NICKEL PER AMP INCORPORATED SPECIFICATION, OVER 0.00127 [.000050] MIN NICKEL PER FEDERAL SPECIFICATION QQ-N-290, CLASS: 2, GRADE: N/A.
 ON LEADS-
 0.00381 [.000150] MIN TIN-LEAD PER MIL-P-81728, OVER 0.00127 [.000050] MIN NICKEL PER FEDERAL SPECIFICATION QQ-N-290, CLASS: 2, GRADE: N/A.
- △ RECEPTACLE ASSEMBLY SOLDER LEADS ARE OFFSET .015 TOWARD THE ASSEMBLY RIGHT OF THE CAVITY CENTERLINE. THE PIN ASSEMBLY SOLDER LEADS ARE IN LINE WITH THE CAVITY CENTERLINE.
- 5. DIMENSIONS IN BRACKETS ARE IN INCHES.



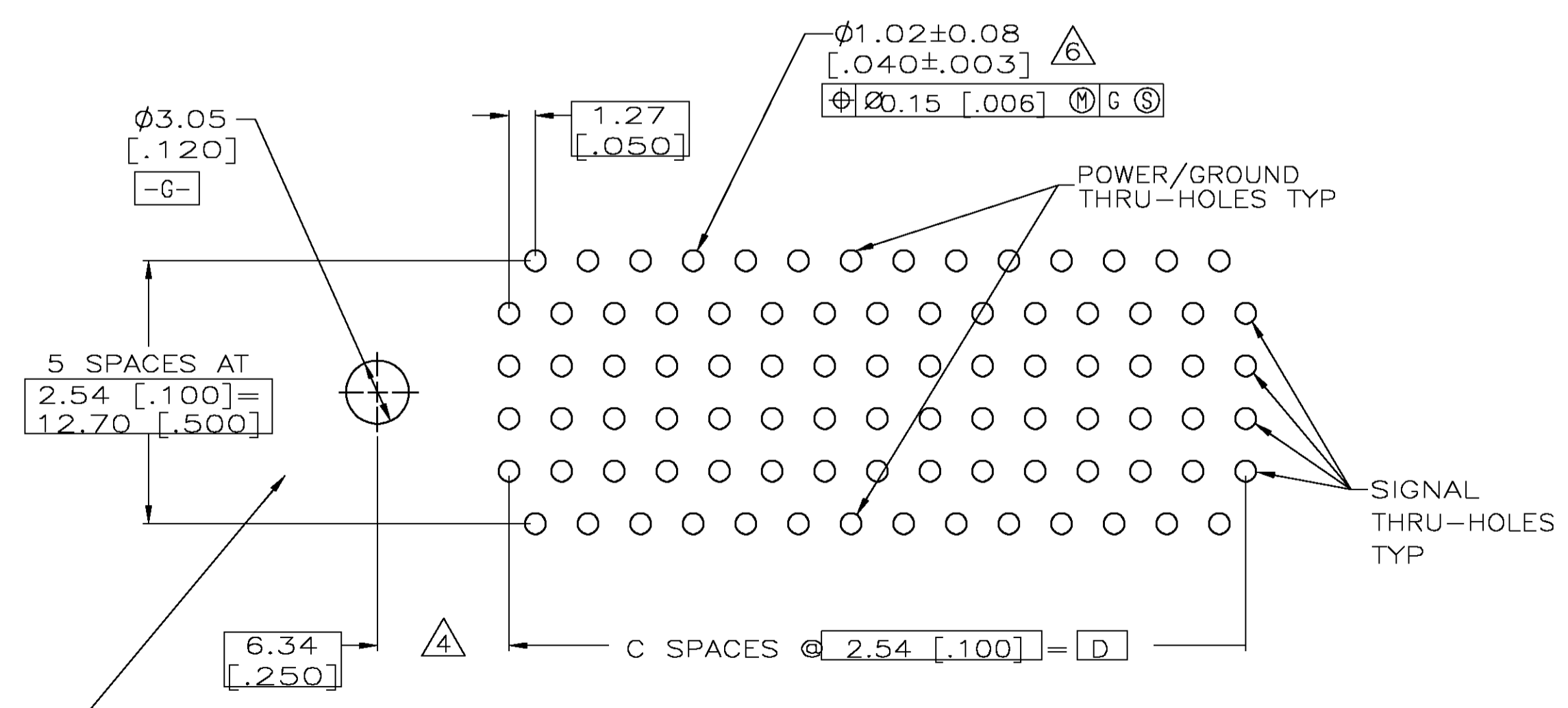
REFERENCE MATED CROSS SECTION SCALE 2:1



REFERENCE MATED CONNECTOR THRU HOLE OFFSET SCALE 2:1



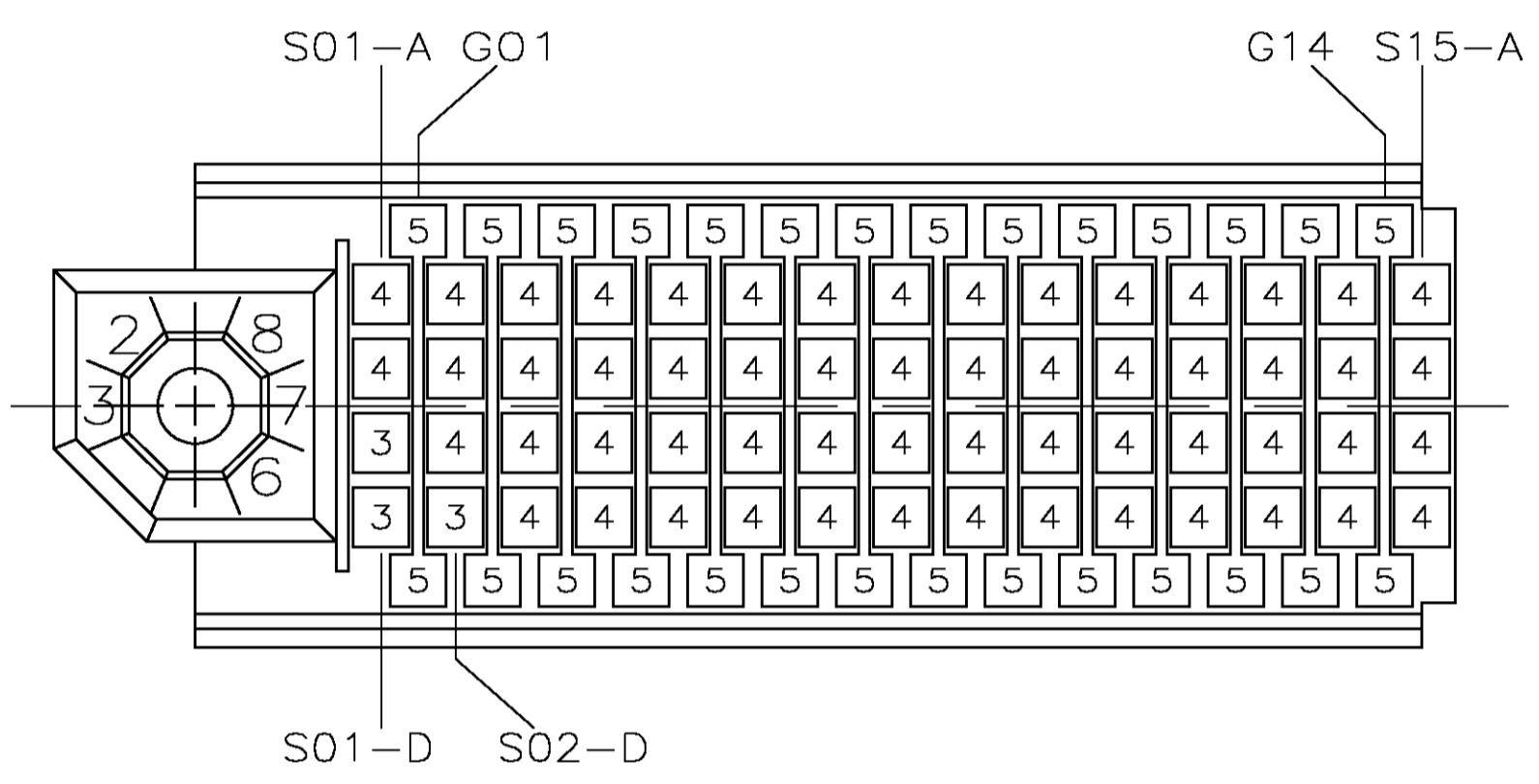
SECTION X-X ROTATED 90° CW



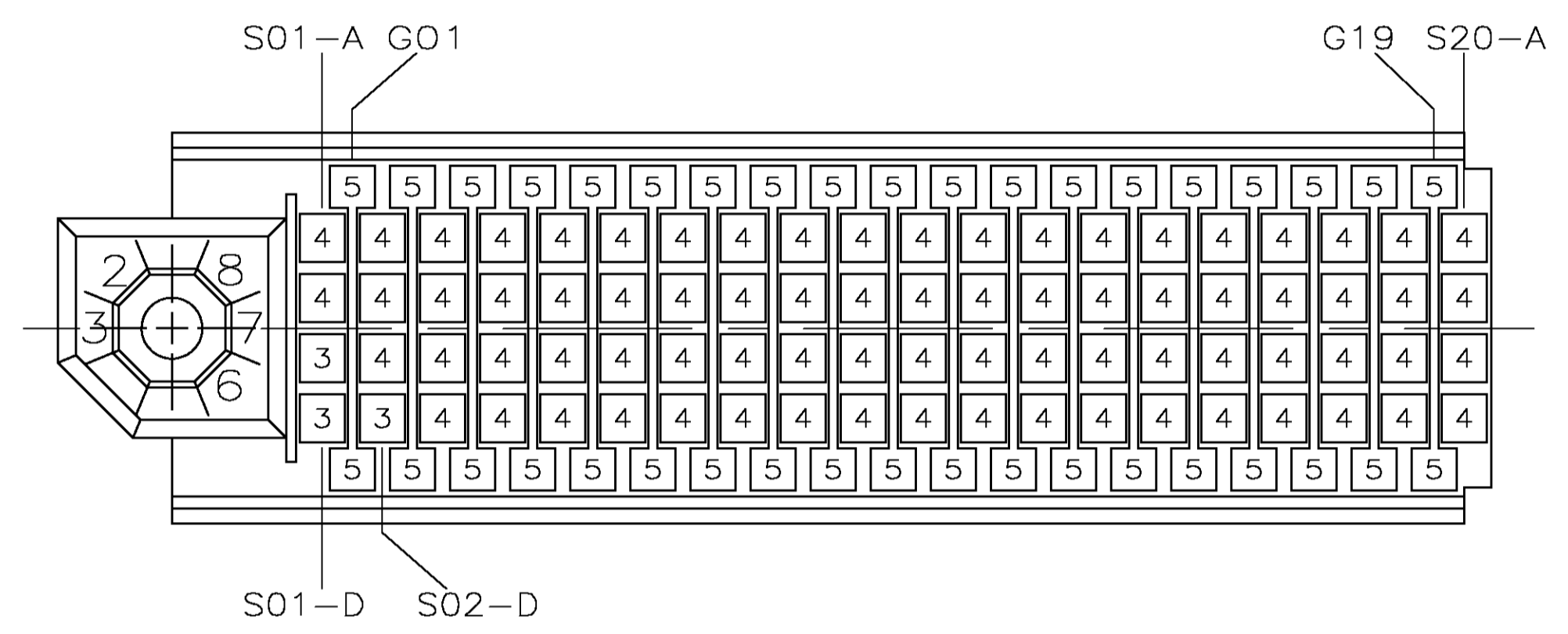
RECOMMENDED CURCUIT PATTERN PER ANSI/IPC-D-300 TYPE II, CLASS C (COMPONENT SIDE)

48.28 [1.900]	19	-	60.55 [2.384]	80	646638-2
35.56 [1.400]	14	-	47.85 [1.884]	60	646638-1
D	C	-	A	NO OF SIGNAL POS	PART NO

THIS DRAWING IS A CONTROLLED DOCUMENT.		DIN J.LOCONDRO 02/02/95 CIK G.P.GROGAN 02/02/95 APD D.B.SINISI 02/06/95	tyco Tyco Electronics Corporation Harrisburg, PA 17105-3608
DIMENSIONS: MM 0 PLC ± - 1 PLC ± - 2 PLC ± 0.51 [.02] 3 PLC ± 0.25 [.010] 4 PLC ± - ANGLES ± -	TOLERANCES UNLESS OTHERWISE SPECIFIED: 0 PLC ± - 1 PLC ± - 2 PLC ± 0.51 [.02] 3 PLC ± 0.25 [.010] 4 PLC ± - ANGLES ± -	NAME: Z-PACK Stripline 100, PIN HEADER SUB-ASSEMBLY LEFT END MODULE PRODUCT SPEC: 108-1244 APPLICATION SPEC: 3.68 [.145] ACTION PIN LEAD LENGTH SIZE: 104-1065 CAGE CODE: A1 00779 DRAWING NO: 646638	RESTRICTED TO: - SCALE: 4:1 SHEET: 1 OF 2 REV: E
MATERIAL: △ △ △ FINISH: △		WEIGHT: - CUSTOMER DRAWING	



646638-1 SUB-ASSEMBLY
 (60 POSITIONS)



646638-2 SUB-ASSEMBLY
 (80 POSITIONS)

POWER/GROUND CONTACT
 LOAD PATTERN
 (MATING FACE)

ITEM DESCRIPTION	LEAD LENGTH REF	POST LENGTH REF	ITEM NUMBER
POWER/GROUND	.145	.277	5
SIGNAL	.145	.237	4
SIGNAL	.145	.175	3

THIS DRAWING IS A CONTROLLED DOCUMENT.		DIM J. LOCONDRO 02/02/95 CHK G.P. GROGAN 02/02/95 APD D.B. SINISI 02/06/95	tyco Electronics Tyco Electronics Corporation Harrisburg, PA 17105-3608
DIMENSIONS: MM 0 PLD ± - 1 PLD ± - 2 PLD ± 0.51 [.02] 3 PLD ± 0.25 [.010] 4 PLD ± - ANGLES ± -	TOLERANCES UNLESS OTHERWISE SPECIFIED: 0 PLD ± - 1 PLD ± - 2 PLD ± 0.51 [.02] 3 PLD ± 0.25 [.010] 4 PLD ± - ANGLES ± -	NAME Z-PACK Stripline 100, PIN HEADER SUB-ASSEMBLY PRODUCT SPEC 108-1244 APPLICATION SPEC 104-1065 WEIGHT -	SIZE A1 CAGE CODE 00779 DRAWING NO. 646638 RESTRICTED TO -
MATERIAL SEE SHEET 1	FINISH SEE SHEET 1	CUSTOMER DRAWING	
AMP 4805 REV 31MAR2000		SCALE 4:1	SHEET 2 OF 2 REV E