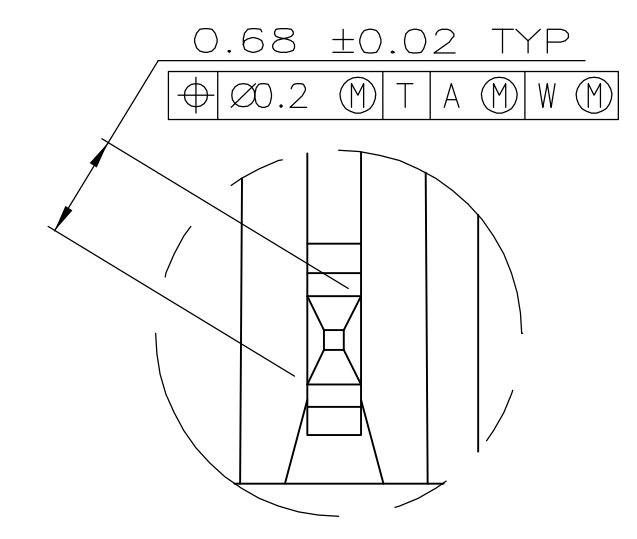


- 1 HOUSING MATERIAL: LIQUID CRYSTAL POLYMER PER ASTM D5138 LCP000 G30A 32250, COLOR: NATURAL.
- 2 CONTACT MATERIAL: PHOSPHOR-BRONZE.
- 3 CONTACT FINISH:  
 UNDERPLATE (ENTIRE CONTACT) - 0.00127 MIN. NICKEL  
 ON MATING SURFACES- CONFORMS TO ALL TESTING SPECIFIED FOR TELCORDIA UNCONTROLLED ENVIRONMENT  
 ON LEADS- 0.0006 MIN. TIN-LEAD, OVER UNDERPLATE LUBRICATION (ENTIRE CONTACT) SURFACE CONDITIONER PER TYCO SPEC 112-1002 AFTER PLATING.
- 4 PART MARKING PER AMP INCORPORATED SPECIFICATION 115-9009, LOCATED APPROXIMATELY AS SHOWN.



DETAIL Z  
SCALE 20:1

RECOMMENDED CIRCUIT PATTERN  
 PER IPC-D300 TYPE II, CLASS C  
 (COMPONENT SIDE)

	NO	34	17	35.88	72	1-536511-2
	NO	130	65	131.88	264	1-536511-1
OBSOLETE	NO	106	53	107.88	216	1-536511-0
	NO	118	59	119.88	240	536511-9
	NO	82	41	83.88	168	536511-8
OBSOLETE	NO	66	33	67.88	136	536511-7
	NO	58	29	59.88	120	536511-6
	NO	70	35	71.88	144	536511-5
	NO	94	47	95.88	192	536511-4
	NO	46	23	47.88	96	536511-3
	NO	22	11	23.88	48	536511-2
	YES	10	5	11.88	24	536511-1
POSITIONING PEGS	C	B	A	FINISH	NO OF POSN	PART NUMBER

THIS DRAWING IS A CONTROLLED DOCUMENT. DWN: D.R.BENDER 10/15/92  
 CHK: S.HEADER 03/29/93  
 APVD: D. BAECHTLE 03/29/93  
 NAME: RCPT. ASS'Y., SIGNAL MODULE, Z-PACK 2mm FB  
 PRODUCT SPEC: 4 ROW, 3.55mm PRESS FIT LEAD LENGTH  
 APPLICATION SPEC: -  
 MATERIAL: -  
 FINISH: -  
 SIZE: A1  
 CAGE CODE: 00779  
 DRAWING NO: 536511  
 WEIGHT: -  
 CUSTOMER DRAWING: -  
 SCALE: 4:1  
 SHEET: 1 OF 1  
 REV: Y