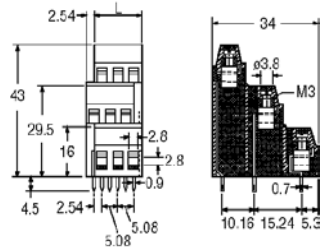
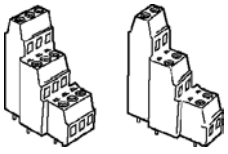


Fixed Printed Circuit Terminal Blocks — NEW —

Triple Deck Terminal Block



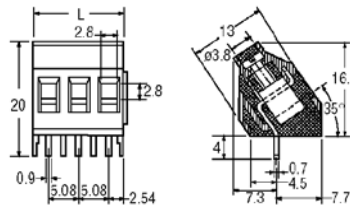
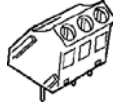
MVT-25 Plug. 5.08 mm (0.20") pin spacing. 15 A, 300 V, 30-14 AWG. Color: Green

Stock No.	Mfr.'s Type	Poles	Length mm (In.)	EACH		
				1-9	10-49	50-Up
502-7318	MVT-252	6	10.16 (0.40)	2.57	2.32	2.13
502-7320	MVT-253	9	15.24 (0.60)	3.84	3.50	3.21
502-7322	MVT-254	12	20.32 (0.80)	5.19	4.73	4.32
502-7324	MVT-255	15	25.40 (1.00)	6.48	5.91	5.41
502-7326	MVT-256	18	30.48 (1.20)	7.80	7.09	6.50
502-7328	MVT-257	21	35.56 (1.40)	9.10	8.27	7.58
502-7330	MVT-258	24	40.64 (1.60)	10.40	9.44	8.65
502-7332	MVT-259	27	45.72 (1.80)	11.69	10.64	9.73
502-7334	MVT-2510	30	50.80 (2.00)	12.99	11.81	10.83
502-7336	MVT-2511	33	55.88 (2.20)	14.29	12.98	11.90
502-7338	MVT-2512	36	60.96 (2.40)	15.58	14.18	12.98
502-7340	MVT-2513	39	66.04 (2.60)	16.88	15.34	14.08
502-7342	MVT-2514	42	71.12 (2.80)	18.18	16.54	15.16
502-7344	MVT-2515	45	76.20 (3.00)	19.49	17.71	16.23
502-7346	MVT-2516	48	81.28 (3.20)	20.79	18.89	17.33
502-7348	MVT-2517	51	86.36 (3.40)	22.09	20.07	18.40
502-7350	MVT-2518	54	91.44 (3.60)	23.38	21.25	19.48

Triple Deck Terminal Block (Continued)
MVT-25 Plug (Continued)

Stock No.	Mfr.'s Type	Poles	Length mm (In.)	EACH		
				1-9	10-49	50-Up
502-7352	MVT-2519	57	96.52 (3.80)	24.68	22.43	20.56
502-7354	MVT-2520	60	101.60 (4.00)	25.98	23.62	21.65
502-7356	MVT-2521	63	106.68 (4.20)	27.27	24.79	22.73
502-7358	MVT-2522	66	111.76 (4.40)	28.58	25.98	23.82
502-7360	MVT-2523	69	116.84 (4.60)	29.87	27.15	24.89
502-7362	MVT-2524	72	121.92 (4.80)	31.17	28.34	25.98
502-7364	MVT-2525	75	127.00 (5.00)	32.48	29.52	27.06

35° Angle



MI-25 (35°) Plug. 5.08 mm (0.20") pin spacing. Mounting Position: 35°. 16 A, 300 V, 14-12 AWG. Color: Green.

Stock No.	Mfr.'s Type	Poles	Length mm (In.)	EACH		
				1-9	10-49	50-Up
502-7366	MI-252 (35)	2	10.16 (0.40)	.58	.52	.48
502-7368	MI-253 (35)	3	15.24 (0.60)	.87	.79	.71
502-7370	MI-254 (35)	4	20.32 (0.80)	1.21	1.12	1.02
502-7372	MI-255 (35)	5	25.40 (1.00)	1.52	1.38	1.27
502-7374	MI-256 (35)	6	30.48 (1.20)	1.83	1.65	1.52
502-7376	MI-257 (35)	7	35.56 (1.40)	2.13	1.94	1.79
502-7378	MI-258 (35)	8	40.64 (1.60)	2.42	2.21	2.02
502-7380	MI-259 (35)	9	45.72 (1.80)	2.73	2.48	2.29
502-7382	MI-2510 (35)	10	50.80 (2.00)	3.04	2.77	2.54
502-7384	MI-2512 (35)	12	60.96 (2.40)	3.65	3.33	3.04

8

Printed Circuit Board Terminal Blocks

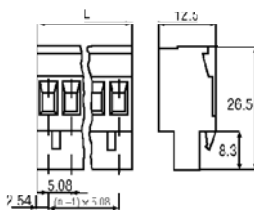
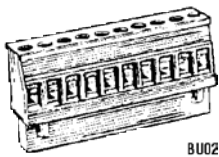
Industry Standard Pluggable — Screw-Cage Clamp Design Plugs

Wire Entry

- ▶ Perpendicular to Plug-In
- ▶ Same Direction as Plug-In
- ▶ Same Plane as Screws and Same Direction as Plug-In

For industrial applications and/or applications where frequent wire terminations occur. Single mold offers maximum strength. Plugs mate with shrouded headers listed on page 376. UL, CSA, IEC/VDE.

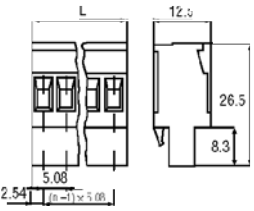
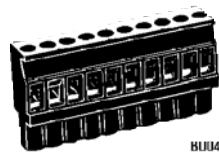
Wire Entry Perpendicular to Plug-In



BU02 Plug. 5.08 mm (0.20") pin spacing. 15 A, 300 V, 22-10 AWG.

Vertical construction with grip top makes insertion and removal easy. Wire entry perpendicular to plug-in direction on locking tab side. Color: Green.

Stock No.	Mfr.'s Type	Poles*	Part No.	Length mm (In.)	EACH	
					1-99	100-499
502-3000	BU02/2	2	36.002	10.16 (0.40)	1.11	.98
502-3002	BU02/3	3	36.003	15.24 (0.50)	1.83	1.53
502-3004	BU02/4	4	36.004	20.32 (0.80)	2.17	1.97
502-3006	BU02/5	5	36.005	25.40 (1.00)	2.72	2.46
502-3008	BU02/6	6	36.006	30.48 (1.20)	3.27	2.96
502-3010	BU02/7	7	36.007	35.56 (1.40)	3.81	3.44
502-3012	BU02/8	8	36.008	40.64 (1.50)	4.35	3.95
502-3014	BU02/10	10	36.010	50.80 (2.00)	5.44	4.93
502-3016	BU02/12	12	36.012	60.96 (2.40)	6.41	5.91
502-3018	BU02/14	14	36.014	71.14 (2.80)	7.47	6.90
502-3020	BU02/15	15	36.015	76.22 (3.00)	8.01	7.39



BU04 Plug. 5.08 mm (0.20") pin spacing. 15 A, 300 V, 22-10 AWG.

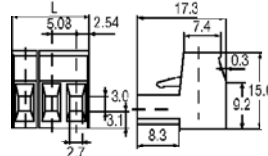
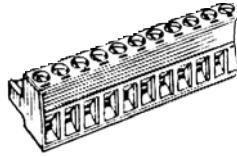
Vertical construction with grip top makes insertion and removal easy. Wire entry is opposite locking tab side. Color: Green.

502-3024	BU04/2	2	36.052	10.16 (0.40)	1.11	.98
----------	--------	---	--------	--------------	------	-----

Wire Entry Perpendicular to Plug-In (Continued)
BU04 Plug (Continued)

Stock No.	Mfr.'s Type	Poles*	Part No.	Length mm (In.)	EACH	
					1-99	100-499
502-3026	BU04/3	3	36.053	15.24 (0.60)	1.98	1.70
502-3028	BU04/4	4	36.054	20.32 (0.80)	2.17	1.97
502-3030	BU04/5	5	36.055	25.40 (1.00)	2.72	2.46
502-3032	BU04/6	6	36.056	30.48 (1.20)	3.27	2.96
502-3034	BU04/7	7	36.057	35.56 (1.40)	3.81	3.44
502-3036	BU04/8	8	36.058	40.64 (1.60)	4.35	3.95
502-3038	BU04/10	10	36.060	50.80 (2.00)	5.44	4.93
502-3040	BU04/12	12	36.062	60.96 (2.40)	6.41	5.91
502-3042	BU04/14	14	36.064	71.14 (2.80)	7.47	6.90
502-3044	BU04/15	15	36.065	76.22 (3.00)	8.01	7.39

Wire Entry Same Direction as Plug-In



SH Plug. 5 mm (0.197") pin spacing. 12 A, 300 V, 30-14 AWG.

Wire entry in same direction as plug-in. Color: Green.

Stock No.	Mfr.'s Type	Poles*	Length mm (In.)	EACH	
				1-99	100-499
502-3692	SH02-5.00	2	10.00 (0.39)	.96	.86
502-3694	SH03-5.00	3	15.00 (0.59)	1.44	1.28
502-3696	SH04-5.00	4	20.00 (0.79)	1.93	1.71
502-3698	SH05-5.00	5	25.00 (0.99)	2.36	2.14
502-3700	SH06-5.00	6	30.00 (1.18)	2.83	2.58
502-3702	SH07-5.00	7	35.00 (1.38)	3.31	3.00
502-3704	SH08-5.00	8	40.00 (1.58)	3.78	3.42
502-3706	SH10-5.00	10	50.00 (1.97)	4.72	4.28
502-3708	SH12-5.00	12	60.00 (2.36)	5.67	5.14
502-3710	SH14-5.00	14	70.00 (2.76)	6.49	5.99
502-3712	SH15-5.00	15	75.00 (2.95)	6.95	6.42

SH Plug. 5.08 mm (0.20") pin spacing. 12 A, 300 V, 30-14 AWG.

Wire entry in same direction as plug-in. Color: Green.

Stock No.	Mfr.'s Type	Poles*	Length mm (In.)	EACH	
				1-99	100-499
502-3670	SH02-5.08	2	10.16 (0.40)	.96	.86
502-3672	SH03-5.08	3	15.24 (0.60)	1.44	1.28
502-3674	SH04-5.08	4	20.32 (0.80)	1.93	1.71
502-3676	SH05-5.08	5	25.40 (1.00)	2.36	2.14
502-3678	SH06-5.08	6	30.48 (1.20)	2.83	2.58
502-3680	SH07-5.08	7	35.56 (1.40)	3.31	3.00
502-3682	SH08-5.08	8	40.64 (1.60)	3.78	3.42
502-3684	SH10-5.08	10	50.80 (2.00)	4.72	4.28
502-3686	SH12-5.08	12	60.96 (2.40)	5.67	5.14
502-3688	SH14-5.08	14	71.14 (2.80)	6.49	5.99
502-3690	SH15-5.08	15	76.22 (3.00)	6.95	6.42