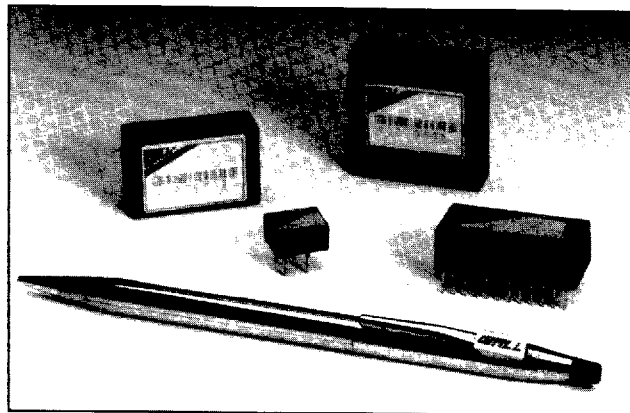


# LAN Series

## to 2 Watts

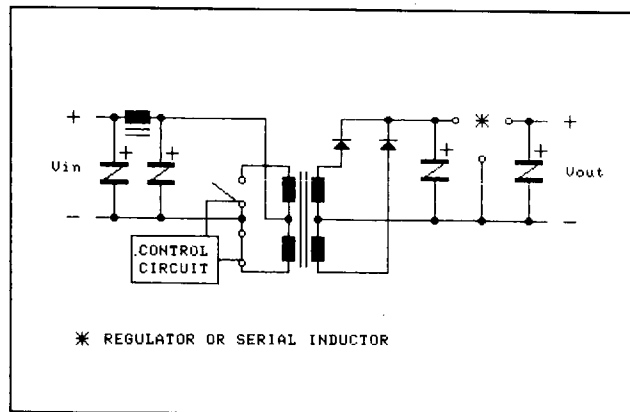
## FEATURES

- **Choice of 4 Different Package Sizes**
- **Regulated and Unregulated Outputs**
- **Short Circuit Protection**
- **Isolation Voltage to 2500 VDC**
- **IEEE 802.3 LAN Compatible**
- **Pi-Input Filter**



## The LAN Series from Wall Industries

The new LAN Series of DC/DC Converters offers up to 2 watts of output power from 4 different package/pin-out configurations. The LAN Series is intended to provide power and isolation for local area network (LAN) transceiver chips. The LAN Series covers Ethernet, Cheapernet or Starlan local area network applications.



## SPECIFICATIONS

**All specifications apply @ + 25°C ambient unless otherwise noted.**

## INPUT SPECIFICATIONS

**Input Voltage Range** .....  $\pm 10\%$  VDC  
**Input Filter** .. Pi-input filter for LAN-A, LAN-B and LAN-C models

## OUTPUT SPECIFICATIONS

Output Voltage Current	.....	see table
Output Voltage Tolerance	.... ± 5% (nominal line and full load)	
Ripple/Noise (Typical)	.....	LAN-A: 40mV P-P LAN-B/C: 50mV P-P LAN-D: 200mV P-P
Line Regulation	.....	see table
Load Regulation	.....	see table
Short Circuit Protection	.....	momentary

## GENERAL SPECIFICATIONS

Efficiency ..... see table  
Isolation Voltage, input to output ..... LAN-A: 2500 VDC

**Switching Frequency** .....20KHz. minimum

## ENVIRONMENTAL SPECIFICATIONS

**Operating Temperature (case temp) . . . . LAN-A: -25°C - +85°C**

**Storage Temperature** . . . . . LAN-A: -40° - +125°C  
LAN-B/C/D: -25° - +125°C

Humidity . . . . . 20% - 95% R.H. (non-condensing)

## PHYSICAL SPECIFICATIONS

**Dimensions** . . . . . LAN-A: 1.33 x 1.33 x 0.5"  
LAN-B: 1.27 x 0.58 x 0.4"  
LAN-C: 1.25 x 0.8 x 0.40"  
LAN-D: 0.5 x 0.4 x 0.28"

**Case Material** ..... non-metallic

**Specifications subject to change without notice.**

# LAN Series

2