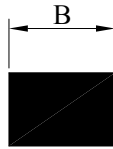
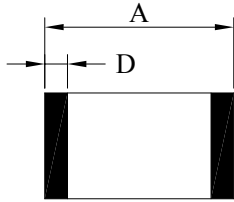


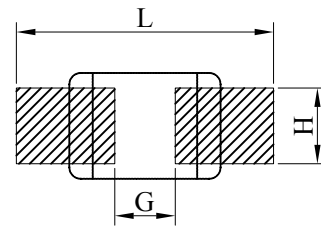
SPECIFICATION FOR APPROVAL

Product Name	FERRITE CHIP INDUCTOR (General Application) (LEAD FREE)	Page	1
Tai-Tech Part No.	FCI3216 Series	Rev. No.	0

1. CONFIGURATION & DIMENSIONS :

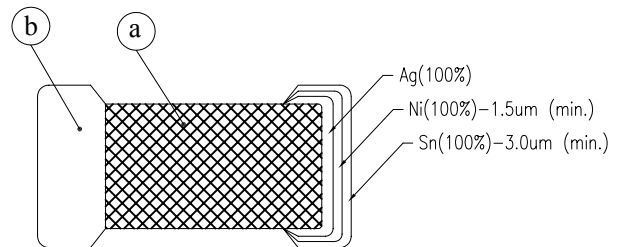
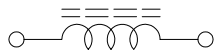


A	: 3.20±0.20	m/m
B	: 1.60±0.20	m/m
C	: 1.10±0.30	m/m
D	: 0.50±0.30	m/m
G	: 2.20 REF	m/m
H	: 1.40 REF	m/m
L	: 4.40 REF	m/m



PCB PATTERN

2. SCHEMATIC DIAGRAM :



3. MATERIALS :

NO.	DESCRIPTION	SPECIFICATION	REMARK
a.	BODY	FERRITE	
b.	TERMINATION	Ag / Ni / Sn	

4. GENERAL SPECIFICATION :

- a. TEMP. RISE : 30°C MAX.
- b. RATED CURRENT : BASE ON TEMP. RISE
- c. STORAGE TEMP. : -40°C ----+85°C
- d. OPERATING TEMP. : -40°C----+85°C
- e. RESISTANCE TO SOLDER HEAT : 260°C.10 SECS.



RoHS Compliant



SPECIFICATION FOR APPROVAL

Product Name	FERRITE CHIP INDUCTOR (General Application) (LEAD FREE)	Page	2
Tai-Tech Part No.	FCI3216 Series	Rev. No.	0

5. ELECTRICAL CHARACTERISTICS :

Part Number	EIA Size	Inductance (μ H)	Q MIN.	Test Frequency (MHz)	SRF (MHz) MIN.	DC Resistance (Ω) MAX.	Rated Current (mA)
FCI3216F-47N <input type="checkbox"/>	1206	0.047	20	50	320	0.15	300
FCI3216F-68N <input type="checkbox"/>	1206	0.068	20	50	280	0.25	300
FCI3216F-R10 <input type="checkbox"/>	1206	0.100	20	25	235	0.25	250
FCI3216F-R12 <input type="checkbox"/>	1206	0.120	20	25	220	0.30	250
FCI3216F-R15 <input type="checkbox"/>	1206	0.150	20	25	200	0.30	250
FCI3216F-R18 <input type="checkbox"/>	1206	0.180	20	25	185	0.40	250
FCI3216F-R22 <input type="checkbox"/>	1206	0.220	20	25	170	0.40	250
FCI3216F-R27 <input type="checkbox"/>	1206	0.270	20	25	150	0.50	250
FCI3216F-R33 <input type="checkbox"/>	1206	0.330	20	25	145	0.50	250
FCI3216F-R39 <input type="checkbox"/>	1206	0.390	25	25	135	0.60	250
FCI3216F-R47 <input type="checkbox"/>	1206	0.470	25	25	125	0.60	200
FCI3216F-R56 <input type="checkbox"/>	1206	0.560	25	25	115	0.70	200
FCI3216F-R68 <input type="checkbox"/>	1206	0.680	25	25	105	0.80	150
FCI3216F-R82 <input type="checkbox"/>	1206	0.820	25	25	100	0.90	150
FCI3216F-1R0 <input type="checkbox"/>	1206	1.000	45	10	75	0.40	100
FCI3216F-1R2 <input type="checkbox"/>	1206	1.200	45	10	65	0.50	100
FCI3216F-1R5 <input type="checkbox"/>	1206	1.500	45	10	60	0.50	50
FCI3216F-1R8 <input type="checkbox"/>	1206	1.800	45	10	55	0.50	50

INDUCTANCE TOLERANCE :

: K : $\pm 10\%$
 : M : $\pm 20\%$



RoHS Compliant



TAI-TECH ADVANCED ELECTRONICS (S) PTE LTD

SPECIFICATION FOR APPROVAL

Product Name	FERRITE CHIP INDUCTOR (General Application) (LEAD FREE)	Page	3
Tai-Tech Part No.	FCI3216 Series	Rev. No.	0

5. ELECTRICAL CHARACTERISTICS :

Part Number	EIA Size	Inductance (μ H)	Q MIN.	Test Frequency (MHz)	SRF (MHz) MIN.	DC Resistance (Ω) MAX.	Rated Current (mA)
FCI3216F-2R2□	1206	2.200	45	10	50	0.60	50
FCI3216F-2R7□	1206	2.700	45	10	45	0.60	50
FCI3216F-3R3□	1206	3.300	45	10	41	0.70	50
FCI3216F-3R9□	1206	3.900	45	10	38	0.80	50
FCI3216F-4R7□	1206	4.700	45	10	35	0.90	50
FCI3216F-5R6□	1206	5.600	50	4	32	0.70	25
FCI3216F-6R8□	1206	6.800	50	4	29	0.80	25
FCI3216F-8R2□	1206	8.200	50	4	26	0.90	25
FCI3216F-100□	1206	10.000	50	2	24	1.00	25
FCI3216F-120□	1206	12.000	50	2	22	1.05	15
FCI3216F-150□	1206	15.000	35	1	19	0.70	5
FCI3216F-180□	1206	18.000	35	1	18	0.70	5
FCI3216F-220□	1206	22.000	35	1	16	0.90	5
FCI3216F-270□	1206	27.000	35	1	14	0.90	5
FCI3216F-330□	1206	33.000	35	0.4	13	1.05	5

INDUCTANCE TOLERANCE :

- : K : $\pm 10\%$
- M : $\pm 20\%$



RoHS Compliant

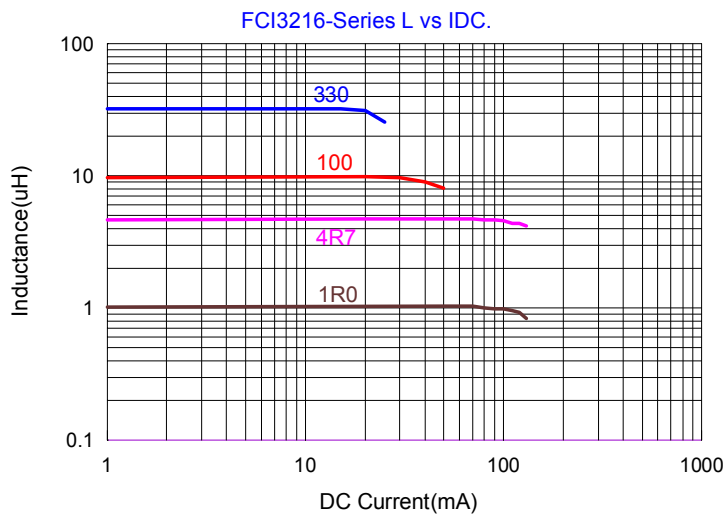
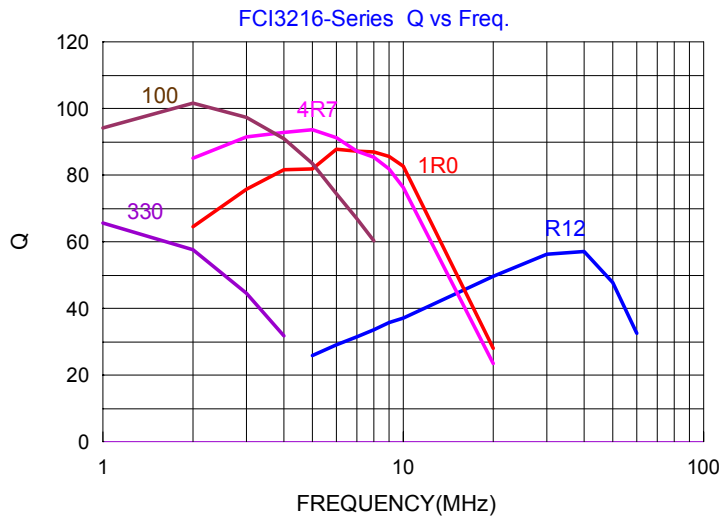


TAI-TECH ADVANCED ELECTRONICS (S) PTE LTD

SPECIFICATION FOR APPROVAL

Product Name	FERRITE CHIP INDUCTOR (General Application) (LEAD FREE)	Page	4
Tai-Tech Part No.	FCI3216 Series	Rev. No.	0

6. CHARACTERISTICS CURVE :



RoHS Compliant

