

Universal Serial Bus Transceiver

PDIUSBP11A

FEATURES

- Complies with Universal Serial Bus specification 1.0
- Utilizes digital inputs and outputs to transmit and receive USB cable data
- Supports 12Mbit/s "Full Speed" and 1.5Mbit/s "Low Speed" serial data transmission
- Compatible with the VHDL "Serial Interface Engine" from USB Implementers' Forum
- Supports single-ended data interface
- Single 3.3V supply
- Available in SO-14, SSOP-14 and TSSOP-14 packages

DESCRIPTION

The PDIUSBP11A is a one chip generic USB transceiver. It is designed to allow 5.0V or 3.3V programmable and standard logic to interface with the physical layer of the Universal Serial Bus. It is capable of transmitting and receiving serial data at both full speed (12Mbit/s) and low speed (1.5Mbit/s) data rates.

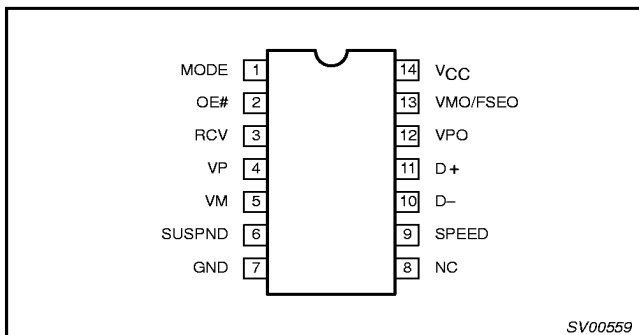
The pinout conforms with the "Serial Interface Engine". Implementation of the Serial Interface Engine along with the USB transceiver allows the designer to make USB compatible devices with off-the-shelf logic and easily modify and update the application.

The PDIUSBP11A is backward compatible to the PDIUSBP11 and allows for single-ended data interfacing.

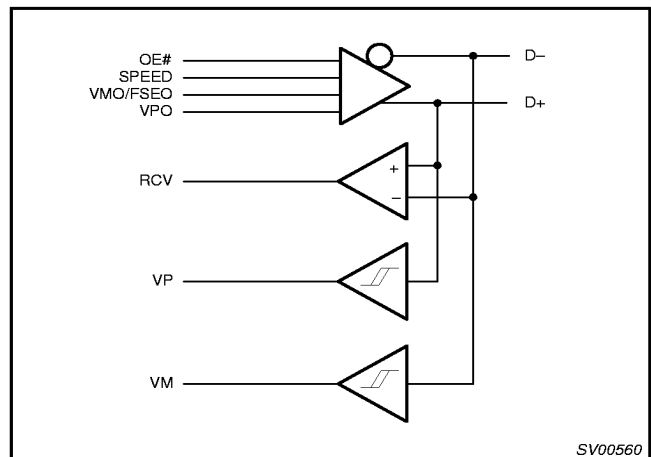
ORDERING INFORMATION

PACKAGES	TEMPERATURE RANGE	OUTSIDE NORTH AMERICA	NORTH AMERICA	PKG. DWG. #
14-pin plastic SO	-40°C to +85°C	PDIUSBP11A D	PDIUSBP11A D	SOT108-1
14-pin plastic SSOP	-40°C to +85°C	PDIUSBP11A DB	PDIUSBP11A DB	SOT337-1
14-pin plastic TSSOP	-40°C to +85°C	PDIUSBP11APW	PDUSBP11APW DH	SOT402-1

PIN CONFIGURATION



FUNCTIONAL DIAGRAM



Universal Serial Bus Transceiver

PDIUSBP11A

PIN DESCRIPTION

PIN No.	PIN SYMBOL	I/O	NAME AND FUNCTION																											
3	RCV	O	Receive data. CMOS level output for USB differential input																											
2	OE#	I	Output Enable. Active LOW, enables the transceiver to transmit data on the bus. When not active the transceiver is in receive mode																											
1	MODE	I	Mode. When left unconnected, a weak pull-up transistor pulls it to V_{CC} and in this mode, the PDIUSBP11A is backward compatible to PDIUSBP11. When connected to GND, the VMO/FSEO pin takes the function of FSEO (Force SEO).																											
12, 13	V_{PO} , V_{MO}/F_{SEO}	I	Inputs to differential driver. (Outputs from SIE).																											
			<table border="1"> <thead> <tr> <th>MODE</th> <th>VPO</th> <th>VMO/FSEO</th> <th>RESULT</th> </tr> </thead> <tbody> <tr> <td rowspan="3">0</td> <td>0</td> <td>0</td> <td>Logic "0"</td> </tr> <tr> <td>0</td> <td>1</td> <td>SE0#</td> </tr> <tr> <td>1</td> <td>0</td> <td>Logic "1"</td> </tr> <tr> <td rowspan="3">1</td> <td>1</td> <td>1</td> <td>SE0#</td> </tr> <tr> <td>0</td> <td>1</td> <td>Logic "0"</td> </tr> <tr> <td>1</td> <td>0</td> <td>Logic "1"</td> </tr> <tr> <td>1</td> <td>1</td> <td>Illegal code</td> </tr> </tbody> </table>	MODE	VPO	VMO/FSEO	RESULT	0	0	0	Logic "0"	0	1	SE0#	1	0	Logic "1"	1	1	1	SE0#	0	1	Logic "0"	1	0	Logic "1"	1	1	Illegal code
			MODE	VPO	VMO/FSEO	RESULT																								
			0	0	0	Logic "0"																								
				0	1	SE0#																								
				1	0	Logic "1"																								
1	1	1	SE0#																											
	0	1	Logic "0"																											
	1	0	Logic "1"																											
1	1	Illegal code																												
4, 5	V_P , V_M	O	Gated version of D- and D+. Outputs are logic "0" and logic "1". Used to detect single ended zero (SE0#), error conditions, and interconnect speed. (Inputs to SIE).																											
			<table border="1"> <thead> <tr> <th>VP</th> <th>VM</th> <th>RESULT</th> </tr> </thead> <tbody> <tr> <td>0</td> <td>0</td> <td>SE0#</td> </tr> <tr> <td>0</td> <td>1</td> <td>Low Speed</td> </tr> <tr> <td>1</td> <td>0</td> <td>Full Speed</td> </tr> <tr> <td>1</td> <td>1</td> <td>Error</td> </tr> </tbody> </table>	VP	VM	RESULT	0	0	SE0#	0	1	Low Speed	1	0	Full Speed	1	1	Error												
			VP	VM	RESULT																									
			0	0	SE0#																									
0	1	Low Speed																												
1	0	Full Speed																												
1	1	Error																												
11, 10	D+, D-	AI/O	Data+, Data-. Differential data bus conforming to the Universal Serial Bus standard.																											
6	SUSPND	I	Suspend. Enables a low power state while the USB bus is inactive. While the suspnd pin is active it will drive the RCV pin to a logic "0" state. Both D+ and D- are tri-stated.																											
9	SPEED	I	Edge rate control. Logic "1" operates at edge rates for "full speed". Logic "0" operates edge rates for "low speed".																											
14	V_{CC}		3.0V to 3.6V power supply																											
7	GND		Ground reference																											

RECOMMENDED OPERATING CONDITIONS

SYMBOL	PARAMETER	CONDITIONS	LIMITS		UNIT
			MIN.	MAX.	
V_{CC}	DC supply voltage		3.0	3.6	V
V_I	DC Input voltage range		0	5.5	V
$V_{AI/O}$	DC input range for AI/O's		0	V_{CC}	V
V_O	DC output voltage range		0	V_{CC}	V
T_{amb}	Operating ambient temperature range in free air	See DC and AC characteristics per device	-40	+85	°C

Universal Serial Bus Transceiver

PDIUSBP11A

ABSOLUTE MAXIMUM RATINGS¹

In accordance with the Absolute Maximum Rating System (IEC 134) Voltages are referenced to GND (ground = 0V)

SYMBOL	PARAMETER	CONDITIONS	LIMITS		UNIT
			MIN	MAX	
V _{CC}	DC supply voltage		-0.5	+6.5	V
I _{IK}	DC input diode current	V _I < 0	-	-50	mA
V _I	DC input voltage	Note 2	-0.5	+5.5	V
V _{I/O}	DC input voltage range for I/O's		-0.5	V _{CC} +0.5	V
I _{OK}	DC output diode current	V _O > V _{CC} or V _O < 0	-	± 50	mA
V _O	DC output voltage	Note 2	-0.5	V _{CC} +0.5	V
I _O	DC output source or sink current for VP/VM, RCV pins	V _O = 0 to V _{CC}	-	± 15	mA
I _O	DC output source or sink current for D+/D- pins	V _O = 0 to V _{CC}	-	± 50	mA
I _{CC} , I _{GND}	DC V _{CC} or GND current		-	± 100	mA
T _{STO}	Storage temperature range		-60	+150	°C
P _{TOT}	Power dissipation per package				mW

NOTES:

- Stresses beyond those listed may cause permanent damage to the device. These are stress ratings only and functional operation of the device at these or any other conditions beyond those indicated under "recommended operating conditions" is not implied. Exposure to absolute-maximum-rated conditions for extended periods may affect device reliability.
- The input and output voltage ratings may be exceeded if the input and output clamp current ratings are observed.

DC CHARACTERISTICS (DIGITAL PINS)

SYMBOL	PARAMETER	TEST CONDITIONS	LIMITS			UNIT
			Temp = -40°C to +85°C			
			MIN	TYP	MAX	
	INPUT LEVELS:					
V _{IL}	LOW level input voltage				0.8	V
V _{IH}	HIGH level input voltage		2.0			V
	OUTPUT LEVELS:					
V _{OL}	LOW level output voltage	I _{OL} = 4mA			0.4	V
		I _{OL} = 20µA			0.1	
V _{OH}	HIGH level output voltage	I _{OH} = 4mA	2.4			V
		I _{OH} = 20µA	V _{CC} -0.1			
	LEAKAGE CURRENT:					
I _L	Input leakage current				±5	µA
I _{CCS}	Supply current in Suspend				5	µA

Universal Serial Bus Transceiver

PDIUSBP11A

DC CHARACTERISTICS (AI/O PINS)

SYMBOL	PARAMETER	TEST CONDITIONS	LIMITS		UNIT
			Temp = -40°C to +85°C		
			MIN	MAX	
	INPUT LEVELS:				
V _{DI}	Differential input sensitivity	D+ - D-	0.2		V
V _{CM}	Differential common mode range	Includes V _{DI} range	0.8	2.5	V
V _{SE}	Single ended receiver threshold		0.8	2.0	V
	OUTPUT LEVELS:				
V _{OL}	Static output LOW voltage	R _L of 1.5 kΩ to 3.6V		0.3	V
V _{OH}	Static output HIGH voltage	R _L of 15 kΩ to GND	2.8	3.6	V
	LEAKAGE CURRENT:				
I _{LO}	Hi-Z State data line leakage current	0V < V _{IN} < 3.3V		±10	μA
	CAPACITANCE:				
C _{IN}	Transceiver capacitance	Pin to GND		20	pF
	OUTPUT RESISTANCE:				
Z _{DRV} ¹	Driver output resistance	Steady state drive	6	18	Ω

NOTES:

- Excludes external resistor. In order to comply with USB Specifications 1.0, external series resistors of 24Ω ±1% each on D+ and D- are recommended.

AC CHARACTERISTICS (AI/O PINS. FULL SPEED)

SYMBOL	PARAMETER	TEST CONDITIONS	LIMITS			UNIT
			T _{amb} = -40°C to +85°C			
			MIN	TYP	MAX	
	Driver Characteristics:	C _L = 50pF; R _{pu} = 1.5kΩ on D+ to V _{CC}				
t _R	Transition Time: Rise time	Between 10% and 90% Waveform 1	4 ¹		20	ns
t _F	Fall time	Waveform 1	4 ¹		20	
t _{RFM}	Rise / Fall time matching	(T _R /T _F)	90		110	%
V _{CRS}	Output signal crossover voltage		1.3		2.0	V
	Driver Timings:					
t _{PLH}	Driver propagation delay	Waveform 2			18	ns
t _{PHL}	(VPO, VMO/FSEO to D+/D-)	Waveform 2			19	ns
t _{PHZ}	Driver disable delay	Waveform 4			13	ns
t _{PLZ}	(OE# to D+/D-)	Waveform 4			13	ns
t _{pZH}	Driver enable delay	Waveform 4			17	ns
t _{pZL}	(OE# to D+/D-)	Waveform 4			17	ns
	Receiver Timings:					
t _{PLH}	Receiver propagation delay	Waveform 3			16	ns
t _{PHL}	(D+, D- to RCV)	Waveform 3			19	ns
t _{PLH}	Single-ended receiver delay	Waveform 3			8	ns
t _{PHL}	(D+, D- to VP, VM)	Waveform 3			8	ns

NOTE:

- The 4ns specification is only for 0°C to +85°C.

Universal Serial Bus Transceiver

PDIUSBP11A

AC CHARACTERISTICS (AI/O PINS. LOW SPEED)

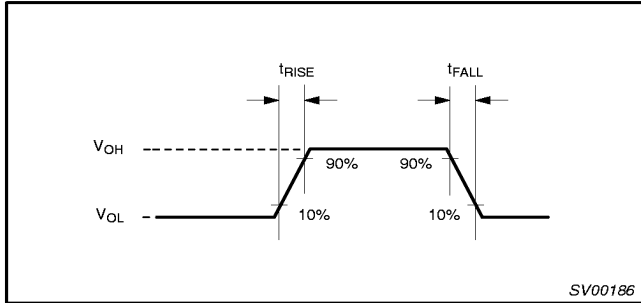
SYMBOL	PARAMETER	TEST CONDITIONS	LIMITS			UNIT
			$T_{amb} = -40^{\circ}\text{C to }+85^{\circ}\text{C}$			
			MIN	TYP	MAX	
	Driver Characteristics:	$C_L = 50\text{pF}$ and 350pF ; $R_{pu} = 1.5\text{k}\Omega$ on D- to V_{CC}				
t_{LR} t_{LF}	Transition Time: Rise time Fall time	Between 10% and 90% $C_L = 50\text{pF}$. Waveform 1 $C_L = 350\text{pF}$. Waveform 1 $C_L = 50\text{pF}$. Waveform 1 $C_L = 350\text{pF}$. Waveform 1	75 75		300 300	ns
t_{LRFM}	Rise / Fall time matching	(T_{LR}/T_{LF})	80		120	%
V_{LCRS}	Output signal crossover voltage		1.3		2.0	V
	Driver Timings:					
tp_{LH}	Driver propagation delay	Waveform 2			300	ns
tp_{HL}	(VPO, VMO/FSEO to D+/D-)	Waveform 2			300	ns
tp_{HZ}	Driver disable delay	Waveform 4			13	ns
tp_{LZ}	(OE# to D+/D-)	Waveform 4			13	ns
tp_{ZH}	Driver enable delay	Waveform 4			205	ns
tp_{ZL}	(OE# to D+/D-)	Waveform 4			205	ns
	Receiver Timings:					
tp_{LH}	Receiver propagation delay	Waveform 3			18	ns
tp_{HL}	(D+, D- to RCV)	Waveform 3			18	ns
tp_{LH}	Single-ended receiver delay	Waveform 3			28	ns
tp_{HL}	(D+, D- to VP, VM)	Waveform 3			28	ns

Universal Serial Bus Transceiver

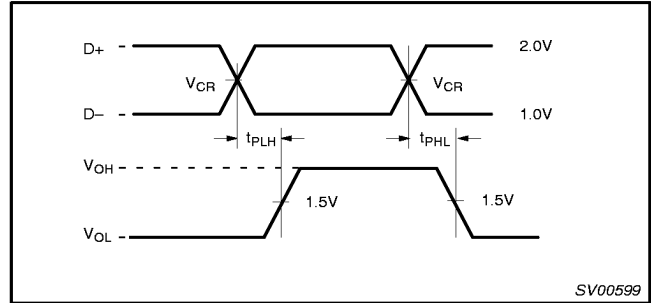
PDIUSBP11A

AC WAVEFORMS

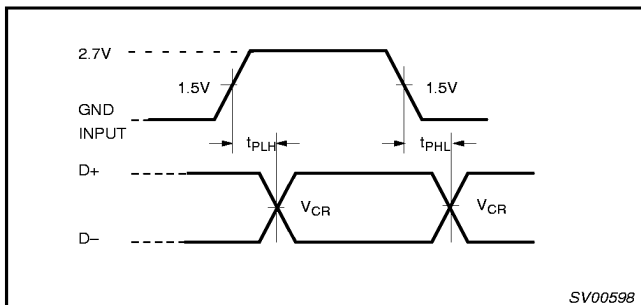
V_{OL} and V_{OH} are the typical output voltage drops that occur with the output load. (V_{CC} never goes below 3.0V).



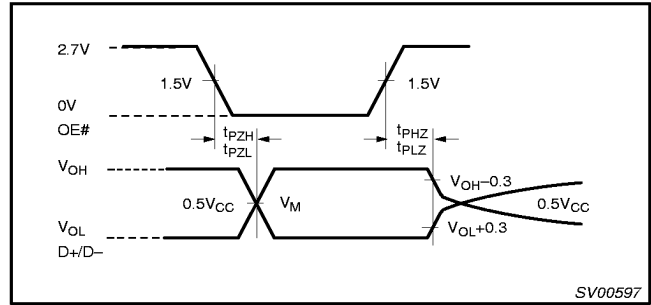
Waveform 1. Rise and Fall Times



Waveform 3. D+/D- to RCV, VP/VM

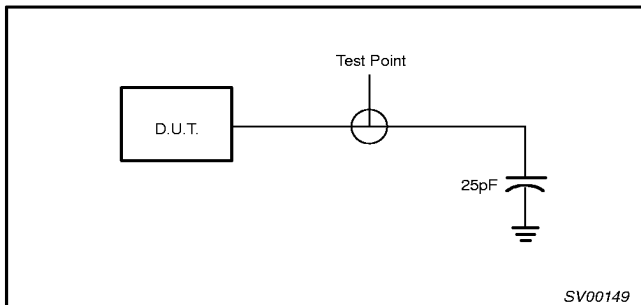


Waveform 2. VPO, VMO/FSEO to D+/D-

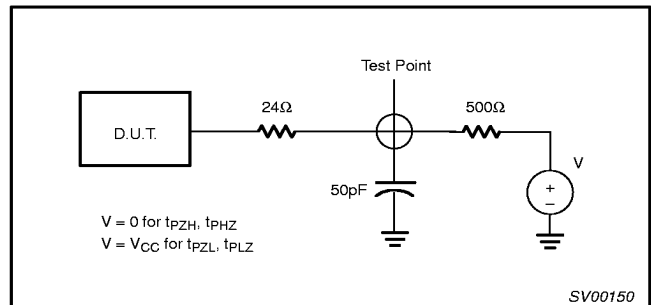


Waveform 4. OE# to D+/D-

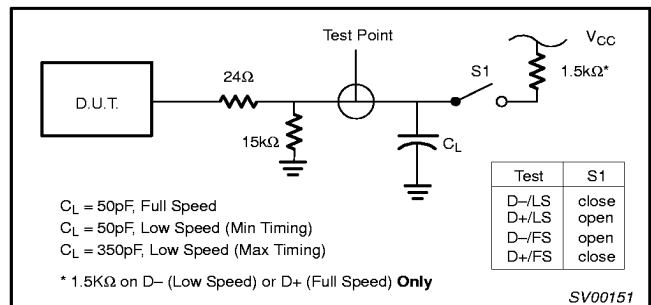
TEST CIRCUITS AND WAVEFORMS



Load for VM/VP and RCV



Load for Enable and Disable Times



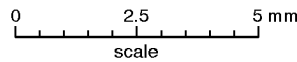
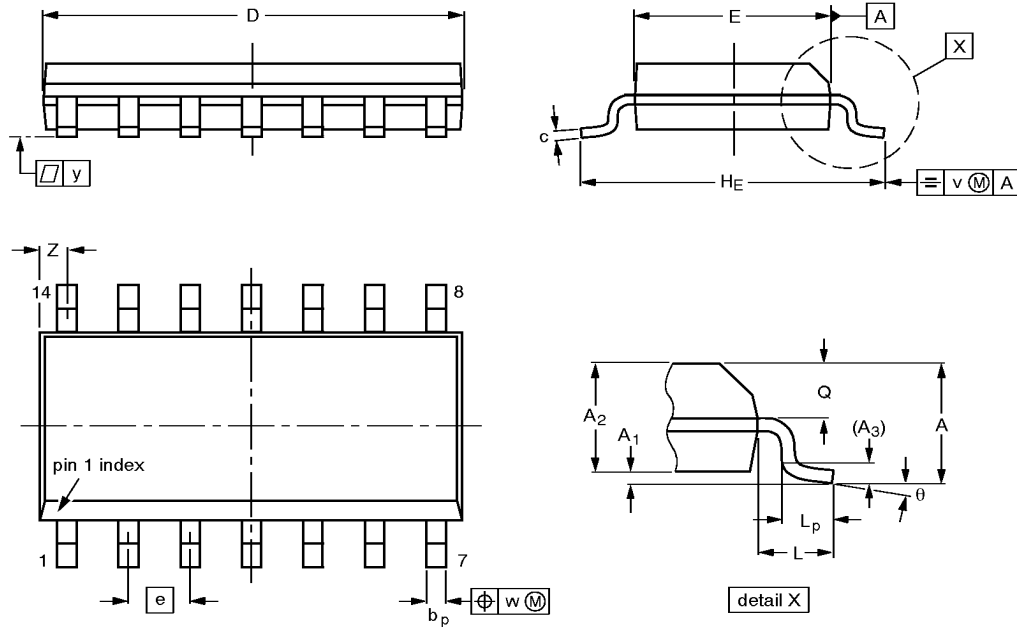
Load for D+/D-

Universal Serial Bus Transceiver

PDIUSBP11A

SO14: plastic small outline package; 14 leads; body width 3.9 mm

SOT108-1



DIMENSIONS (inch dimensions are derived from the original mm dimensions)

UNIT	A max.	A ₁	A ₂	A ₃	b _p	c	D ⁽¹⁾	E ⁽¹⁾	e	H _E	L	L _p	Q	v	w	y	Z ⁽¹⁾	θ
mm	1.75	0.25 0.10	1.45 1.25	0.25	0.49 0.36	0.25 0.19	8.75 8.55	4.0 3.8	1.27	6.2 5.8	1.05	1.0 0.4	0.7 0.6	0.25	0.25	0.1	0.7 0.3	8° 0°
inches	0.069	0.0098 0.0039	0.057 0.049	0.01	0.019 0.014	0.0098 0.0075	0.35 0.34	0.16 0.15	0.050	0.24 0.23	0.041	0.039 0.016	0.028 0.024	0.01	0.01	0.004	0.028 0.012	

Note

1. Plastic or metal protrusions of 0.15 mm maximum per side are not included.

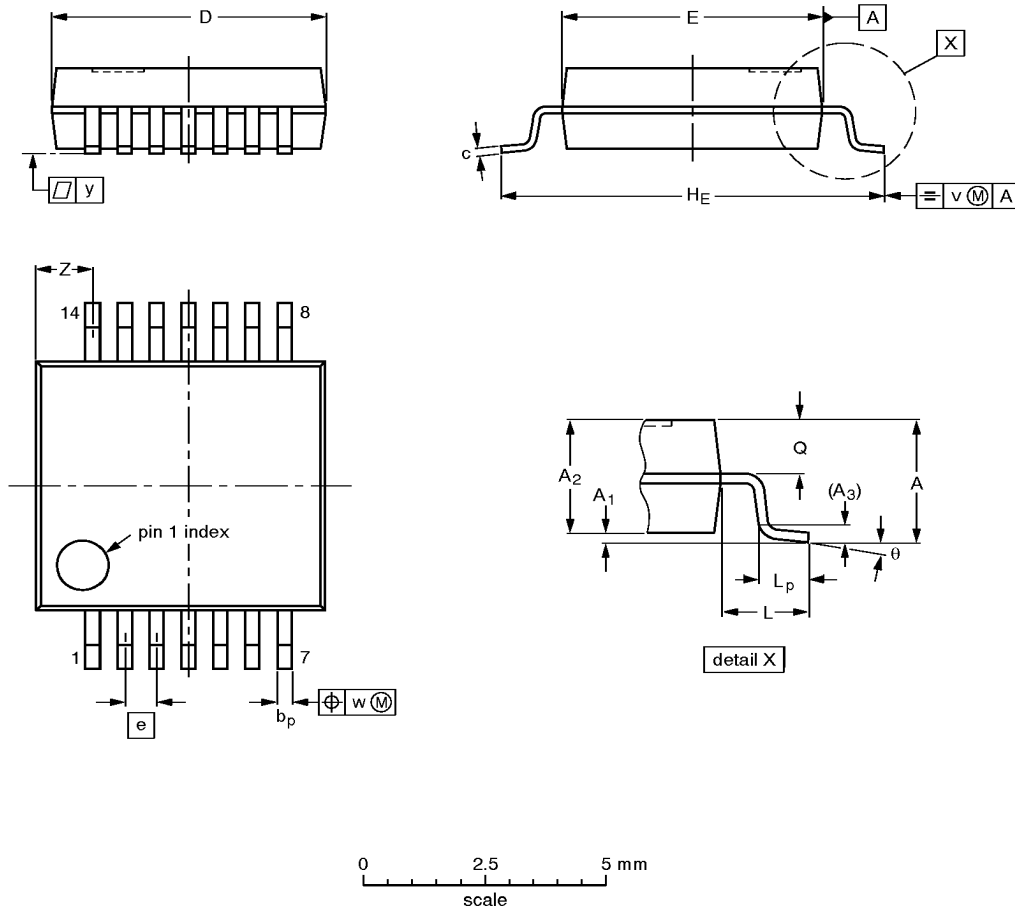
OUTLINE VERSION	REFERENCES			EUROPEAN PROJECTION	ISSUE DATE
	IEC	JEDEC	EIAJ		
SOT108-1	076E06S	MS-012AB			91-08-13 95-01-23

Universal Serial Bus Transceiver

PDIUSBP11A

SSOP14: plastic shrink small outline package; 14 leads; body width 5.3 mm

SOT337-1



DIMENSIONS (mm are the original dimensions)

UNIT	A max.	A ₁	A ₂	A ₃	b _p	c	D ⁽¹⁾	E ⁽¹⁾	e	H _E	L	L _p	Q	v	w	y	Z ⁽¹⁾	θ
mm	2.0	0.21 0.05	1.80 1.65	0.25	0.38 0.25	0.20 0.09	6.4 6.0	5.4 5.2	0.65	7.9 7.6	1.25	1.03 0.63	0.9 0.7	0.2	0.13	0.1	1.4 0.9	8° 0°

Note

1. Plastic or metal protrusions of 0.25 mm maximum per side are not included.

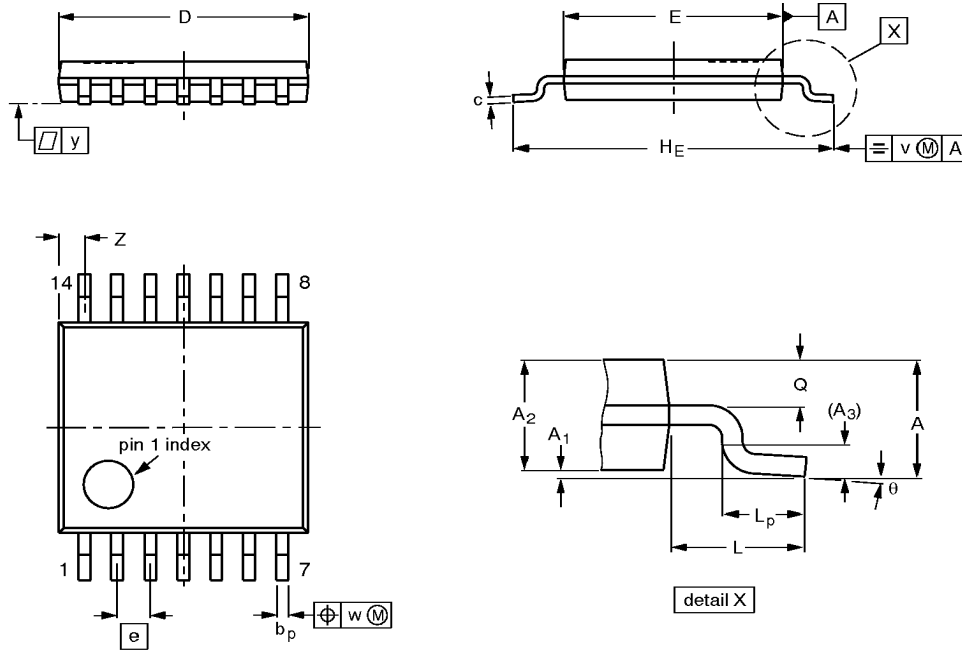
OUTLINE VERSION	REFERENCES				EUROPEAN PROJECTION	ISSUE DATE
	IEC	JEDEC	EIAJ			
SOT337-1		MO-150AB				95-02-04 96-01-18

Universal Serial Bus Transceiver

PDIUSBP11A

TSSOP14: plastic thin shrink small outline package; 14 leads; body width 4.4 mm

SOT402-1



DIMENSIONS (mm are the original dimensions)

UNIT	A max.	A ₁	A ₂	A ₃	b _p	c	D ⁽¹⁾	E ⁽²⁾	e	H _E	L	L _p	Q	v	w	y	Z ⁽¹⁾	θ
mm	1.10	0.15 0.05	0.95 0.80	0.25	0.30 0.19	0.2 0.1	5.1 4.9	4.5 4.3	0.65	6.6 6.2	1.0	0.75 0.50	0.4 0.3	0.2	0.13	0.1	0.72 0.38	8° 0°

Notes

1. Plastic or metal protrusions of 0.15 mm maximum per side are not included.
2. Plastic interlead protrusions of 0.25 mm maximum per side are not included.

OUTLINE VERSION	REFERENCES				EUROPEAN PROJECTION	ISSUE DATE
	IEC	JEDEC	EIAJ			
SOT402-1		MO-153				-94-07-12- 95-04-04