

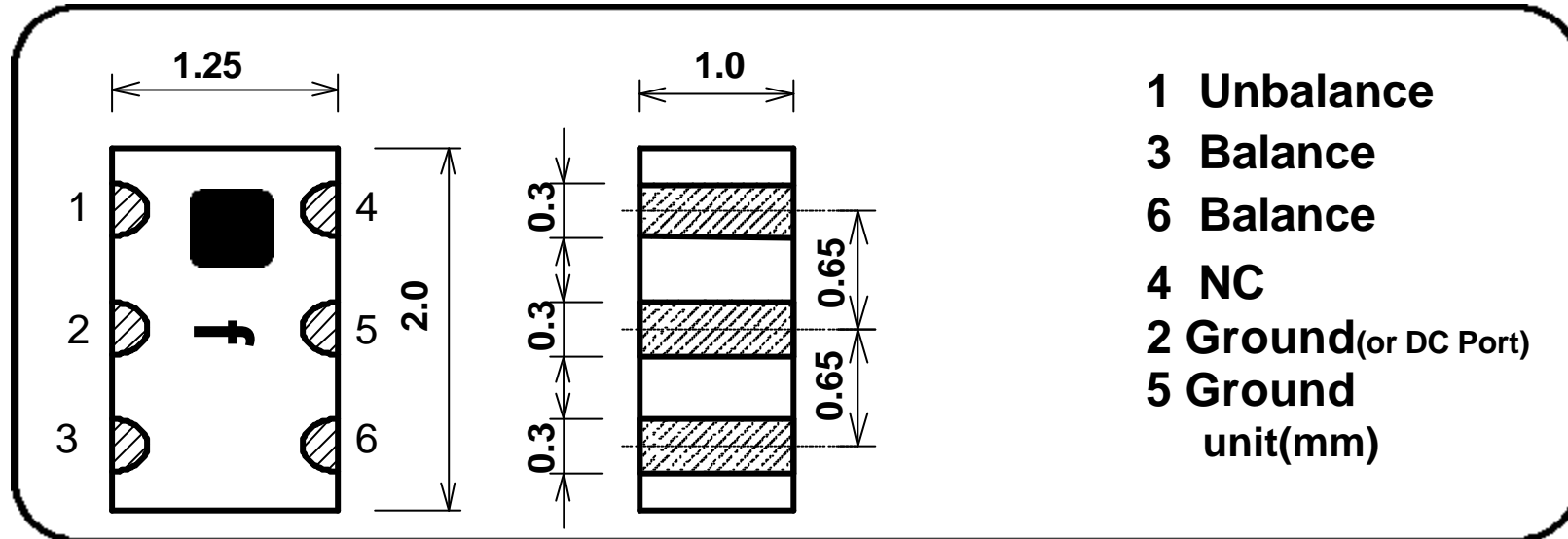
2012 Size

824-915MHz Band
Chip Multilayer RF Transformer

Impedance Ratio 50:200

SLT-S087G

Shape & Size



Specifications

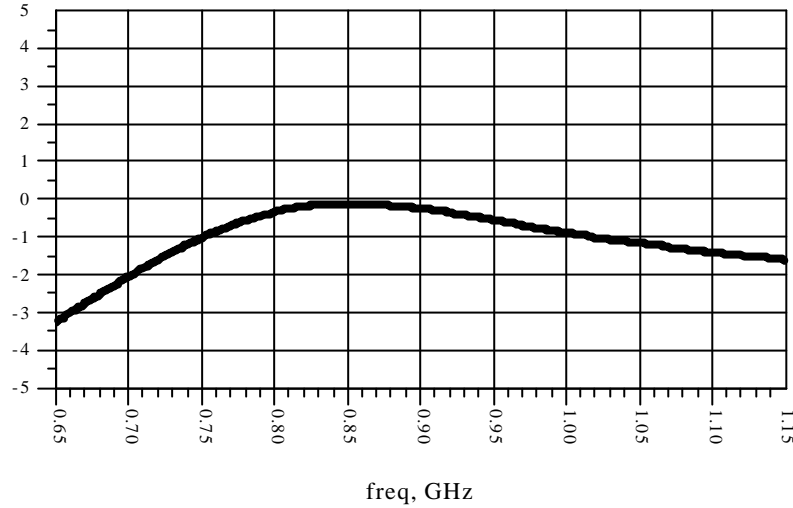
P/N	Frequency Range(MHz)	Impedance ratio	Insertion Loss *1	Amplitude Balance	V.S.W.R	Phase Balance	Handling Power	Temperature Range
SLT-S087G	824-915	50:200	1.0dB Max.	1.0dB Max.	2.0 Max.	180 +/- 10deg.	100mW Max.	-35 to +85 deg.C

*1 Measured by "Back to Back" per piece

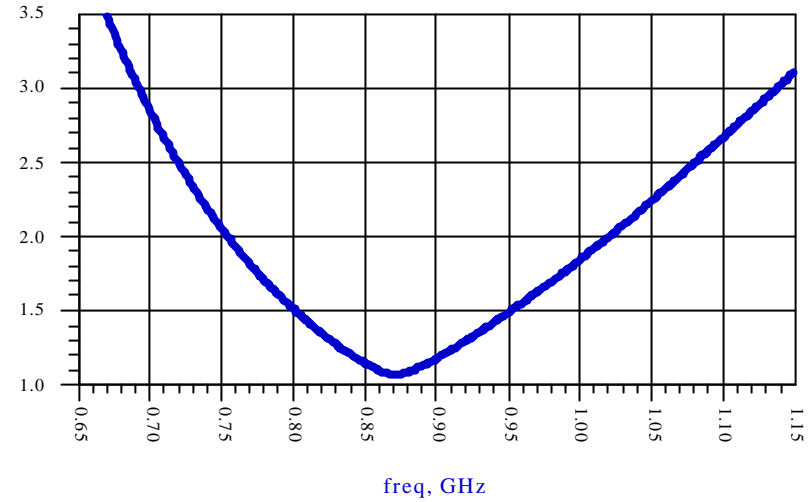
"All the technical data and information contained herein are subject to change without notice."

SLT-S087G Sample DATA

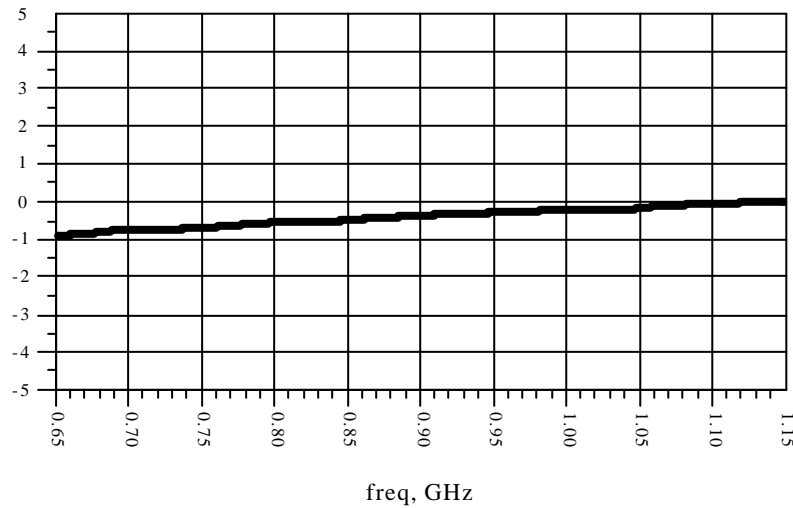
Insertion loss



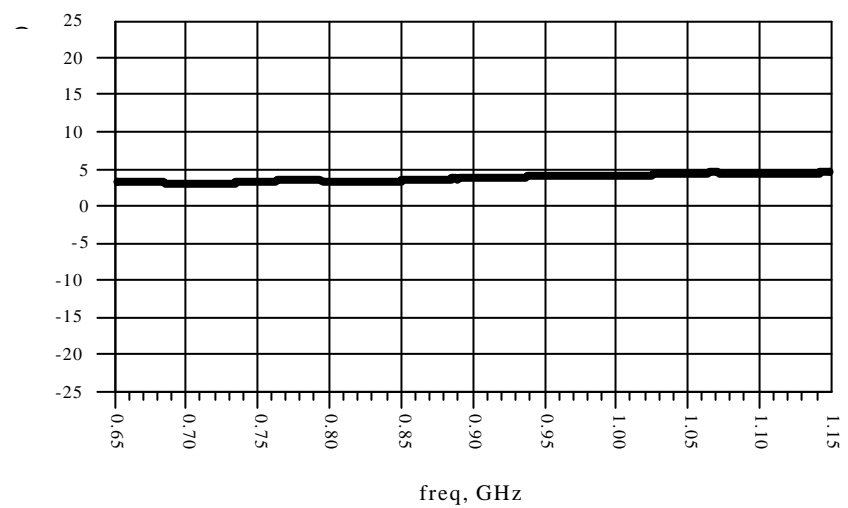
V.S.W.R



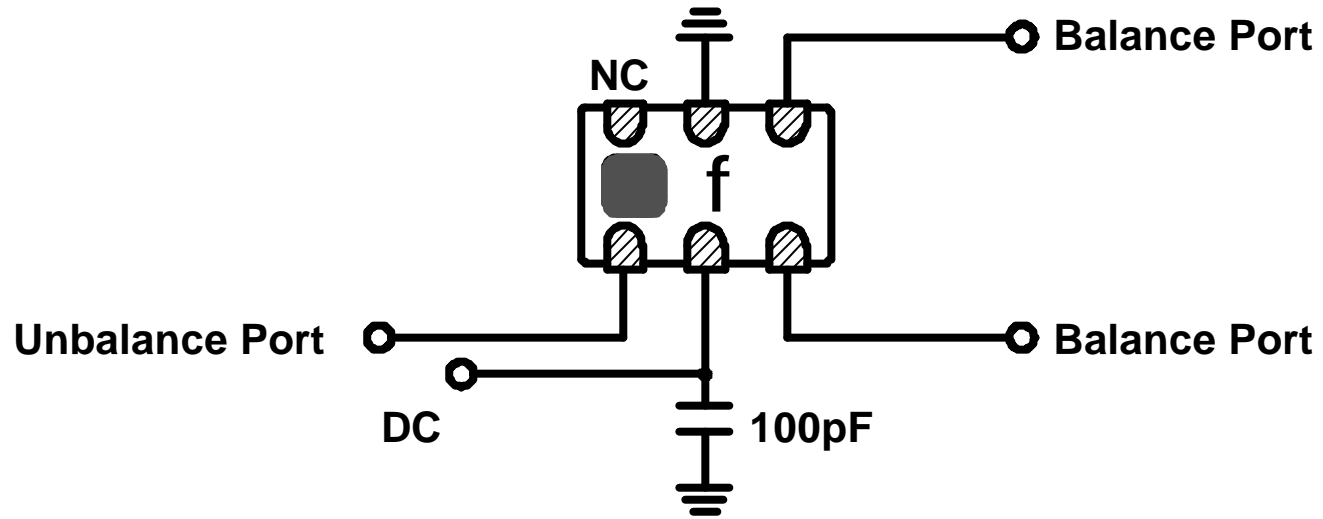
Amplitude balance



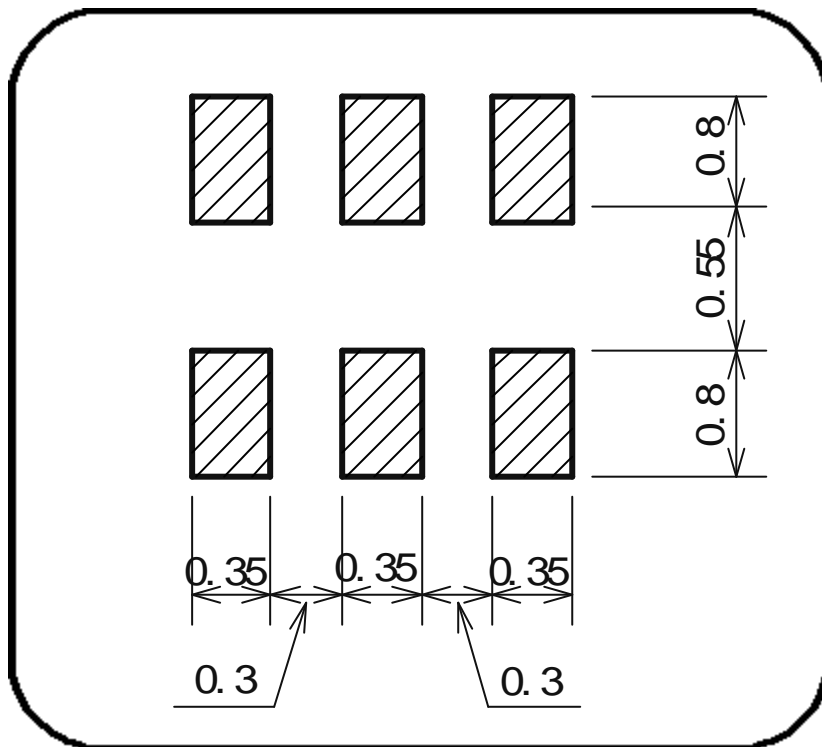
Phase balance



If you apply DC voltage to Balance Port, please add capacitor as below circuit A.



Foot Pattern



Foot Pattern Example

